



Service Manual

216B3 SKID STEER LOADER

S/N PWK00001-UP

KENR6948-04 C1.5 and C2.2 Engines for Caterpillar Built Machines	2
UENR0248-03 216B3, 226B3, 236B3, 242B3 and 252B3 Skid Steer Loaders Engine Supplement	282
UENR0251-06 216B3, 226B3, 236B3, 242B3 and 252B3 Skid Steer Loaders Power Train	405
UENR0252-02 216B3, 226B3, 236B3, 242B3 and 252B3 Skid Steer Loaders Machine Systems	886

ALREADY HAVE _____	4
Alternator - Remove and Install - 65 Amp and 85 Amp Alternators _____	7
Bearing Clearance - Check _____	11
Camshaft - Assemble _____	14
Camshaft - Disassemble _____	16
Camshaft - Install _____	18
Camshaft - Remove _____	22
Connecting Rod Bearings - Install - Connecting rods in position _____	26
Connecting Rod Bearings - Remove - Connecting rods in position _____	29
Coolant Temperature Switch - Remove and Install _____	31
Crankcase Breather - Remove and Install - Naturally Aspirated Engines _____	34
Crankcase Breather - Remove and Install - Turbocharged Engines _____	39
Crankshaft - Install _____	44
Crankshaft - Remove _____	48
Crankshaft Front Seal - Remove and Install _____	51
Crankshaft Main Bearings - Install _____	55
Crankshaft Main Bearings - Remove _____	60
Crankshaft Pulley - Remove and Install _____	64
Crankshaft Rear Seal - Remove and Install _____	68
Crankshaft Wear Sleeve (Rear) - Remove and Install _____	72
Cylinder Head - Install _____	78
Cylinder Head - Remove _____	83
Electric Starting Motor - Remove and Install _____	88
Engine Oil Cooler - Remove and Install _____	91
Engine Oil Line - Remove and Install _____	95
Engine Oil Pan - Remove and Install _____	100
Engine Oil Pressure Switch - Remove and Install _____	104
Engine Oil Pump - Install _____	109
Engine Oil Pump - Remove _____	115
Engine Oil Relief Valve - Remove and Install _____	120

Exhaust Manifold - Remove and Install _____	124
Fan - Remove and Install _____	128
Flywheel - Install _____	131
Flywheel - Remove _____	135
Flywheel Housing - Remove and Install - Engines with Flywheel Housing and Back Plate _____	138
Flywheel Housing - Remove and Install _____	144
Fuel Filter Base - Remove and Install _____	147
Fuel Injection Lines - Remove and Install _____	151
Fuel Injection Pump - Remove and Install _____	158
Fuel Injector - Remove and Install _____	164
Fuel Shutoff Solenoid - Remove and Install _____	168
Fuel Transfer Pump - Remove and Install - Electrical Fuel Transfer Pump ____	171
Fuel Transfer Pump - Remove and Install - Mechanical Fuel Transfer Pump .	174
Glow Plugs - Remove and Install _____	178
Housing (Front) - Assemble _____	181
Housing (Front) - Disassemble _____	190
Housing (Front) - Install _____	197
Housing (Front) - Remove _____	201
Inlet and Exhaust Valve Springs - Remove and Install _____	204
Inlet and Exhaust Valves - Remove and Install _____	211
Lifter Group - Remove and Install _____	220
Pistons and Connecting Rods - Assemble _____	224
Pistons and Connecting Rods - Disassemble _____	230
Pistons and Connecting Rods - Install _____	236
Pistons and Connecting Rods - Remove _____	239
Rocker Shaft - Assemble _____	242
Rocker Shaft - Disassemble _____	245
Rocker Shaft and Pushrod - Install _____	248
Rocker Shaft and Pushrod - Remove _____	251

Turbocharger - Remove and Install _____	254
Valve Mechanism Cover - Remove and Install _____	260
V-Belts - Remove and Install _____	265
Water Pump - Remove and Install _____	268
Water Temperature Regulator - Remove and Install _____	274
Water Temperature Regulator Housing - Remove and Install _____	278

[Previous Screen](#)

Product: SKID STEER LOADER

Model: 216B3 SKID STEER LOADER PWK

Configuration: 216B3 Skid Steer Loader PWK00001-UP (MACHINE) POWERED BY C2.2 Engine

Disassembly and Assembly

C1.5 and C2.2 Engines for Caterpillar Built Machines

Media Number -KENR6948-04

Publication Date -01/06/2015

Date Updated -30/06/2016

i02601956

Alternator - Remove and Install - 55 Amp Alternator

SMCS - 1405-010

Removal Procedure

Start By:

- a. Remove the V-Belt. Refer to Disassembly and Assembly, "V-Belts - Remove and Install".

NOTICE

Keep all parts clean from contaminants.

Contaminants may cause rapid wear and shortened component life.

1. Turn the battery disconnect switch to the OFF position.
 2. Make temporary identification marks on the connections of the harness assembly.
-

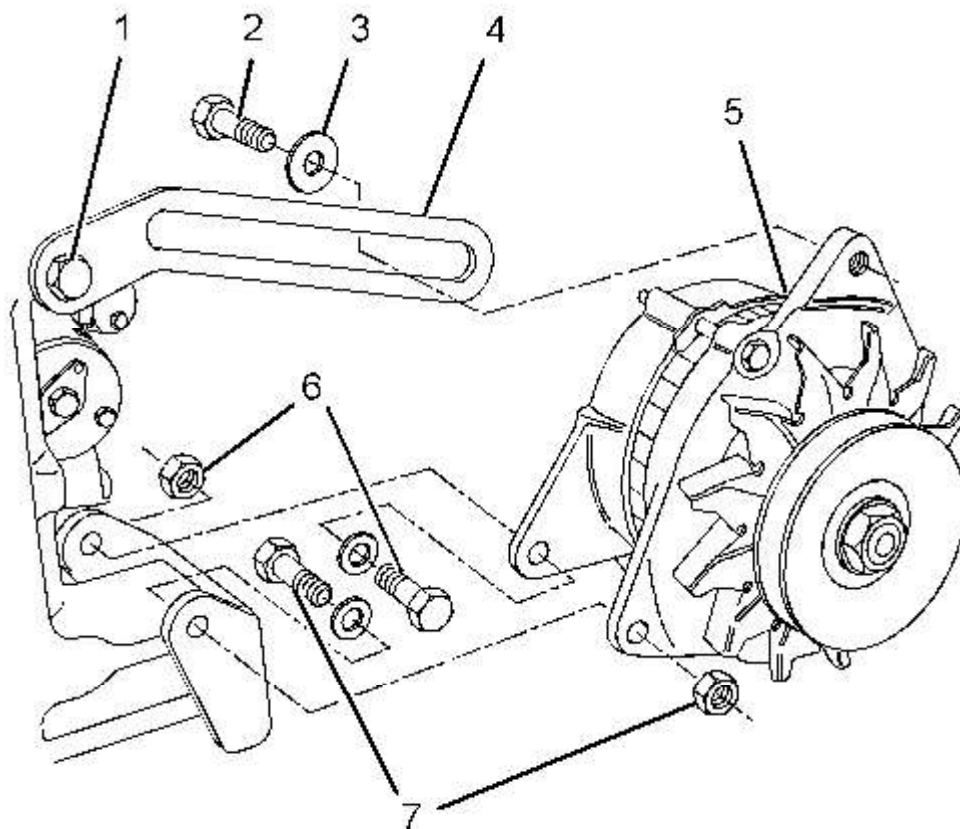


Illustration 1
Typical example

g01308282

3. Disconnect the harness assembly (not shown) from alternator (5).
4. Remove bolt (2) and washer (3) from alternator (5).
5. Remove fasteners (6) and (7) and remove alternator (5) from the mounting bracket.
6. If necessary, remove bolt (2) and remove adjusting link (4).

Installation Procedure

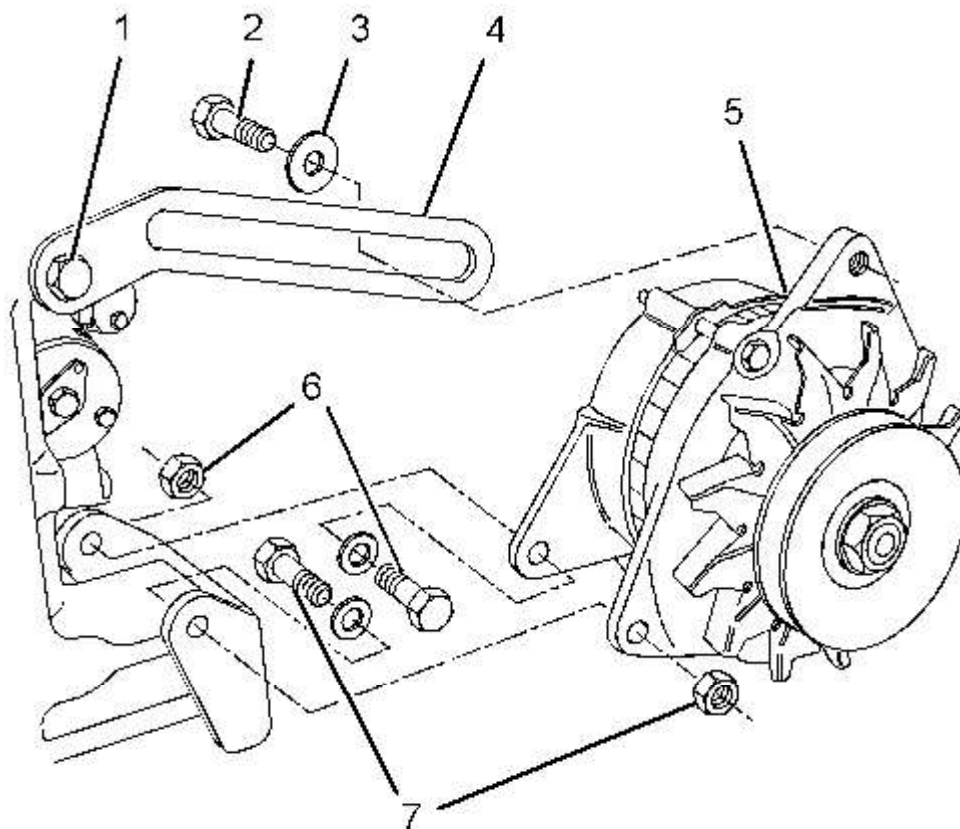


Illustration 2
Typical example

g01308282

1. If necessary, install adjusting link (4) and install bolt (1) finger tight.
2. Position alternator (5) on the mounting bracket.
3. Install fasteners (6) and (7) finger tight.
4. Install bolt (2) and washer (3) finger tight.
5. Install the V-Belt. Refer to Disassembly and Assembly, "V-Belts - Remove and Install".

Note: Ensure that the alternator pulley is in alignment with the crankshaft pulley. Ensure that all fasteners are tightened.

6. Connect the harness assembly (not shown) to the alternator.
7. Turn the battery disconnect switch to the ON position.

[Previous Screen](#)

Product: SKID STEER LOADER

Model: 216B3 SKID STEER LOADER PWK

Configuration: 216B3 Skid Steer Loader PWK00001-UP (MACHINE) POWERED BY C2.2 Engine

Disassembly and Assembly

C1.5 and C2.2 Engines for Caterpillar Built Machines

Media Number -KENR6948-04

Publication Date -01/06/2015

Date Updated -30/06/2016

i02601962

Alternator - Remove and Install - 65 Amp and 85 Amp Alternators

SMCS - 1405-010

Removal Procedure

Start By:

- a. Remove the V-Belt. Refer to Disassembly and Assembly, "V-Belts - Remove and Install".

NOTICE

Keep all parts clean from contaminants.

Contaminants may cause rapid wear and shortened component life.

1. Turn the battery disconnect switch to the OFF position.
 2. Make temporary identification marks on the connections of the harness assembly.
-

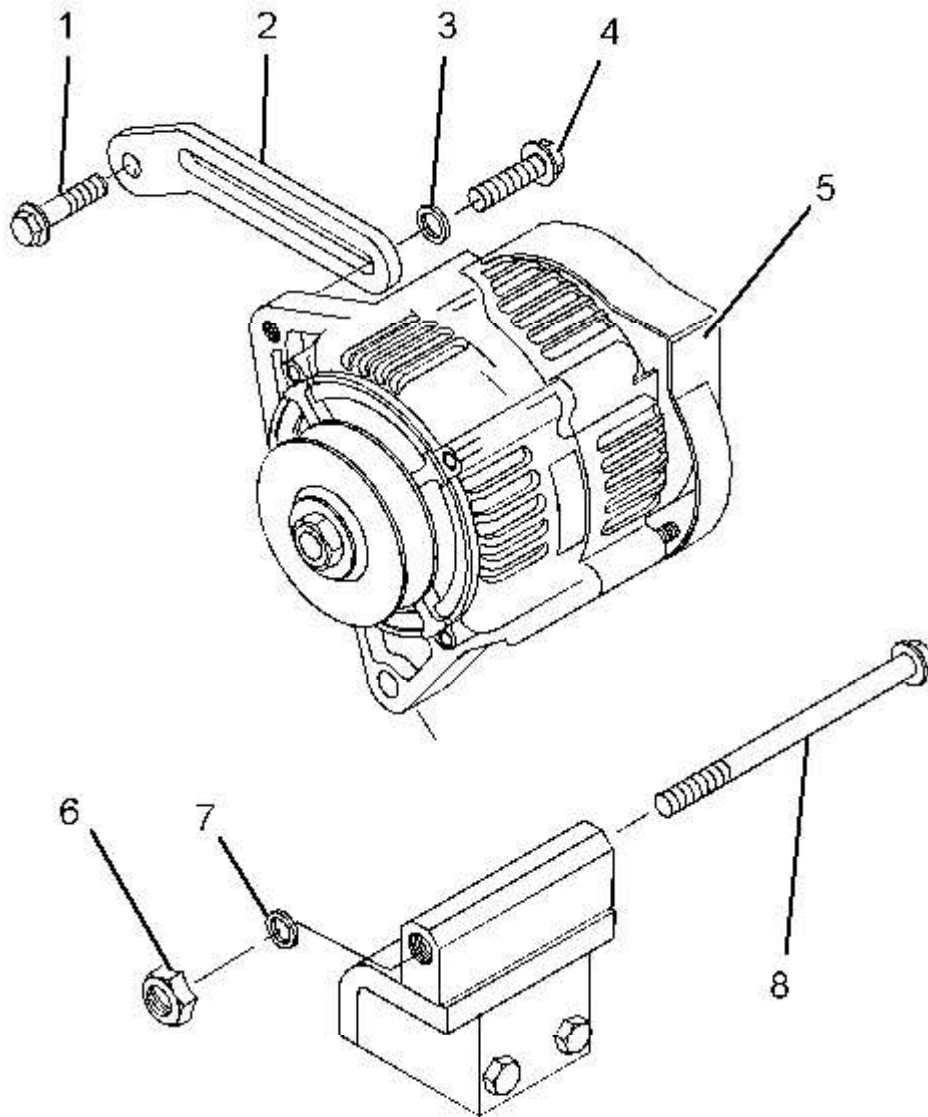


Illustration 1
Typical example

g01308285

3. Disconnect the harness assembly (not shown) from alternator (5).
4. Remove bolt (4) and washer (3) from alternator (5).
5. Remove washer (7) and nut (6). Remove bolt (8) and alternator (5) from the mounting bracket.
6. If necessary, remove bolt (1) and remove adjusting link (2).

Installation Procedure
