



# PARTS MANUAL

---

**216B SKID STEER LOADER**

---

RLL

**Tip: Use Bookmarks panel to navigate**

---

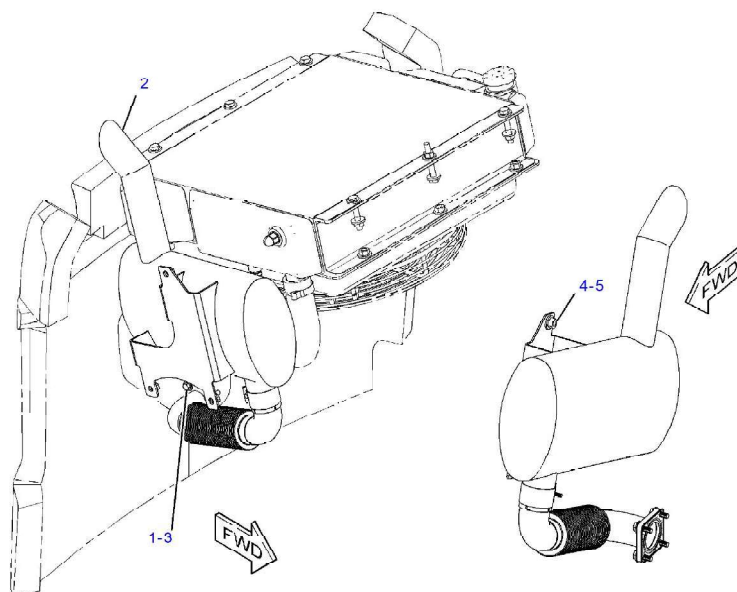
Printed by Heavy Equipment Manuals  
v2.20

Printed in U.S.A

[Heavy Equipment Manuals](#)

[Previous Screen](#)

Product: SKID STEER LOADER  
 Model: 216B SKID STEER LOADER RLL  
 Configuration: 216B2 Skid Steer Loader RLL06800-UP (MACHINE)  
 POWERED BY 3024C Engine



GRAPHIC #1  
 g03037876

216B2 Skid Steer Loader, Powered By 3024C Engine  
 Media Number - SEBP4632-45 | Publication Date - 01/11/2020 | Date  
 Updated - 10/11/2020

i04890378

272-3049 MUFFLER GP  
 S/N RLL6800-UP

PART OF 252-0449, 261-6155, 278-5347, 278-5369, 278-5413, 295-7037, 295-7048, 295-7058, 295-7065, 295-7148, 295-7161, 295-7285, 295-7286, 295-7287, 295-7288, 295-7289, 295-7290, 340-7714 CONVERSION AR-MACHINE, 257-5716, 257-5718 CONVERSION AR-ROADING  
 AN ATTACHMENT

## ENTIRE GROUP

Ref.	Qty.	NPR Note	Part No.	Part Name
Grp	<input type="text"/>	<a href="#">NPR</a>	272-3049	MUFFLER GP

## INDIVIDUAL PARTS

Ref.	Qty.	NPR Note	Part No.	Req. Qty.	Part Name
1	<input type="text"/>	<a href="#">NPR</a> M	8T-4908	4	BOLT (M8X1.25X25-MM)
2	<input type="text"/>	<a href="#">NPR</a>	272-3048	1	MUFFLER GP (SPARK ARRESTOR)
	<input type="text"/>	<a href="#">NPR</a>	142-8818	1	CLAMP-PIPE
	<input type="text"/>	<a href="#">NPR</a>	230-3731	1	MUFFLER AS
	<input type="text"/>	<a href="#">NPR</a>	272-3058	1	ELBOW AS-EXHAUST
3	<input type="text"/>	<a href="#">NPR</a>	5P-4116	4	WASHER-HARD (8.8X20.5X2-MM THK)
4	<input type="text"/>	<a href="#">NPR</a>	7X-7729	3	WASHER (11X25X3-MM THK)
5	<input type="text"/>	<a href="#">NPR</a> M	8T-4133	3	NUT (M10X1.5-THD)

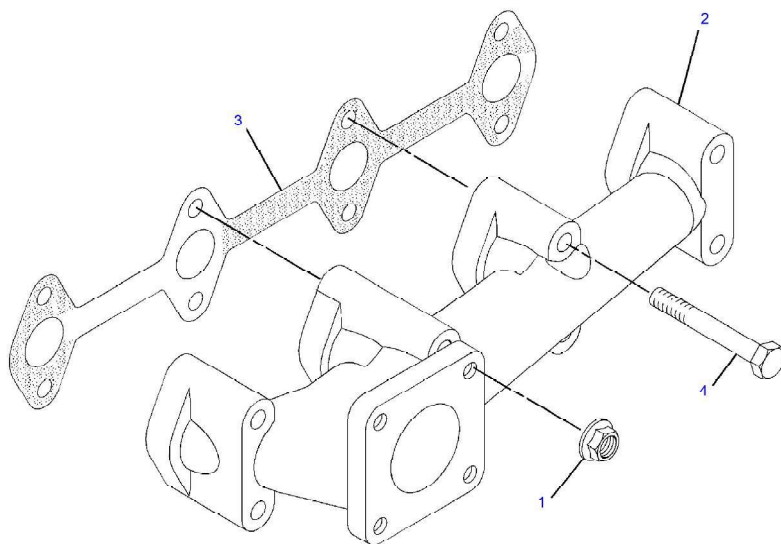
Key:

M - METRIC PART

SMCS Codes		
1062		

[Previous Screen](#)

Product: SKID STEER LOADER  
 Model: 216B SKID STEER LOADER RLL  
 Configuration: 216B2 Skid Steer Loader RLL06800-UP (MACHINE)  
 POWERED BY 3024C Engine



GRAPHIC #1  
 g01419140

**216B2 Skid Steer Loader, Powered By 3024C Engine**  
 Media Number - SEBP4632-45 | Publication Date - 01/11/2020 | Date  
 Updated - 10/11/2020

i02770506

**309-6724 MANIFOLD GP-EXHAUST**  
**S/N CYP1-UP; CYS1-UP**  
**PART OF 292-5718, 454-4433 ENGINE AR-PRIMARY**  
**AN ATTACHMENT**

**ENTIRE GROUP**

Ref.	Qty.	NPR Note	Part No.	Part Name
Grp	<input type="text"/>	<a href="#">NPR</a>	309-6724	MANIFOLD GP-EXHAUST

INDIVIDUAL PARTS

Ref.	Qty.	NPR Note	Part No.	Req. Qty.	Part Name
1	<input type="text"/>	<a href="#">NPR</a> M	153-5592	2	NUT (M8X1.25-THD)
2	<input type="text"/>	<a href="#">NPR</a>	154-2426	1	MANIFOLD-EXHAUST
3	<input type="text"/>	<a href="#">NPR</a>	154-2427	1	GASKET-EXHAUST MANIFOLD
4	<input type="text"/>	<a href="#">NPR</a>	154-2428	6	BOLT AS

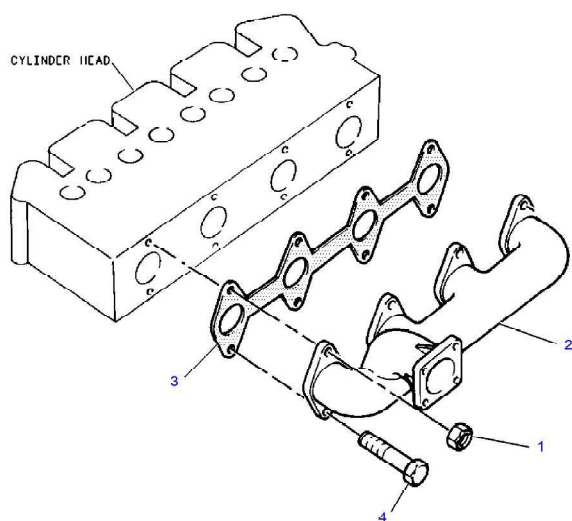
Key:

M - METRIC PART

SMCS Codes		
1059		

[Previous Screen](#)

Product: SKID STEER LOADER  
 Model: 216B SKID STEER LOADER RLL  
 Configuration: 216B2 Skid Steer Loader RLL06800-UP (MACHINE)  
 POWERED BY 3024C Engine



GRAPHIC #1  
 g00483759

216B2 Skid Steer Loader, Powered By 3024C Engine  
 Media Number - SEBP4632-45 | Publication Date - 01/11/2020 | Date  
 Updated - 10/11/2020

i02644037

**160-3568 MANIFOLD GP-EXHAUST**  
**S/N GGA1-31300; CSD1-11322**  
**PART OF 179-1808, 300-5205 ENGINE AR-PRIMARY**  
**AN ATTACHMENT**

**ENTIRE GROUP**

Ref.	Qty.	NPR Note	Part No.	Part Name
Grp	<input type="text"/>		160-3568	MANIFOLD GP-EXHAUST

INDIVIDUAL PARTS

Ref.	Qty.	NPR Note	Part No.	Req. Qty.	Part Name
1	<input type="text"/>	<a href="#">NPR</a> M	153-5592	2	NUT (M8X1.25-THD)
2	<input type="text"/>	<a href="#">NPR</a>	154-2426	1	MANIFOLD-EXHAUST
3	<input type="text"/>	<a href="#">NPR</a>	154-2427	1	GASKET-EXHAUST MANIFOLD
4	<input type="text"/>	<a href="#">NPR</a>	154-2428	6	BOLT AS

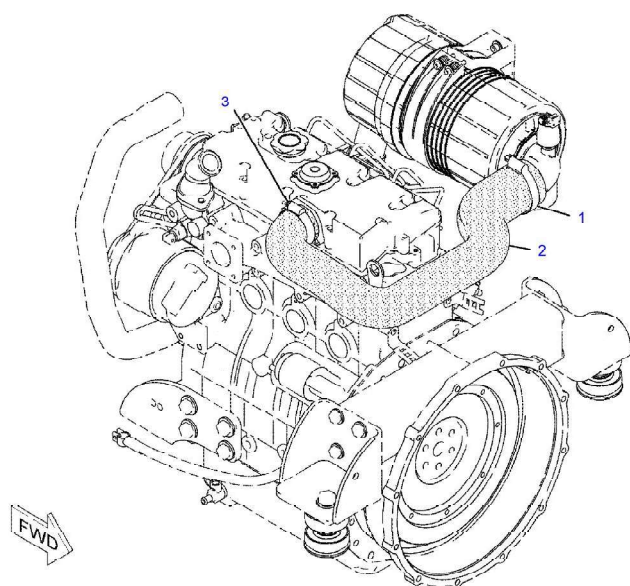
Key:

M - METRIC PART

SMCS Codes		
1059		

[Previous Screen](#)

Product: SKID STEER LOADER  
Model: 216B SKID STEER LOADER RLL  
Configuration: 216B2 Skid Steer Loader RLL06800-UP (MACHINE)  
POWERED BY 3024C Engine



GRAPHIC #1  
g01031666

**216B2 Skid Steer Loader, Powered By 3024C Engine**  
Media Number - SEBP4632-45 | Publication Date - 01/11/2020 | Date  
Updated - 10/11/2020

i01988376

**218-0944 LINES GP-AIR**  
**S/N RLL6800-UP**  
**PART OF 278-1218 INSTALLATION AR-ENGINE**

#### ENTIRE GROUP

Ref.	Qty.	NPR Note	Part No.	Part Name
------	------	----------	----------	-----------