



# Service Manual

---

**216 SKID STEER LOADER**

---

**4NZ**

**Note: Use Bookmarks panel to navigate**

---

Printed by Heavy Equipment Manuals  
v2.20

Printed in U.S.A

[Heavy Equipment Manuals](#)

Disassembly and Assembly	2
Schematic	1096
Specifications	1158
Systems Operation	1595
Testing and Adjusting	2041
Torque Specifications	2735
Troubleshooting	2786

## RA1.2, R1.4, R2.0, R2.2, R2.5, R2.7, R3.0, R4.5 and R5.5 Series

Reduction Starting Motors .....	2
REN2853-02 216, 226 and 228 Skid Steer Loaders Engine Supplement ..	22
REN2857-02 216, 226 and 228 Skid Steer Loaders Powertrain .....	139
REN2862-04 216 and 226 Skid Steer Loaders Machine Systems .....	220
REN4833-01 216 and 232 Skid Steer Loaders 3024 Engine Supplement ..	230
REN4838-02 216, 226, 232 and 242 Skid Steer Loaders Machine Systems .....	324
Seal Installation .....	489
SEN5006-04 3024C Engine for Caterpillar Built Machines .....	559
SEN5013-08 3034 Engine for Caterpillar Built Machines .....	768
SEN5664-27 Air Conditioning and Heating R134a for All Caterpillar Machines .....	1051
SEN5841-00 G3B, K3A and L3A Denso Alternators .....	1082

General Information	2
Starting Motor - Assemble	5
Starting Motor - Disassemble	13



## Service Information System

Shutdown SIS

[Previous Screen](#)

Product: SKID STEER LOADER

Model: 216 SKID STEER LOADER 4NZ

Configuration: 216 226 228 Skid Steer Loader 4NZ00001-03399 (MACHINE) POWERED BY 3034 Engine

### Disassembly and Assembly

#### RA1.2, R1.4, R2.0, R2.2, R2.5, R2.7, R3.0, R4.5 and R5.5 Series Reduction Starting Motors

Media Number -SEN3828-02

Publication Date -01/07/1999

Date Updated -09/10/2001

i01107056

## General Information

SMCS - 4351-012

---

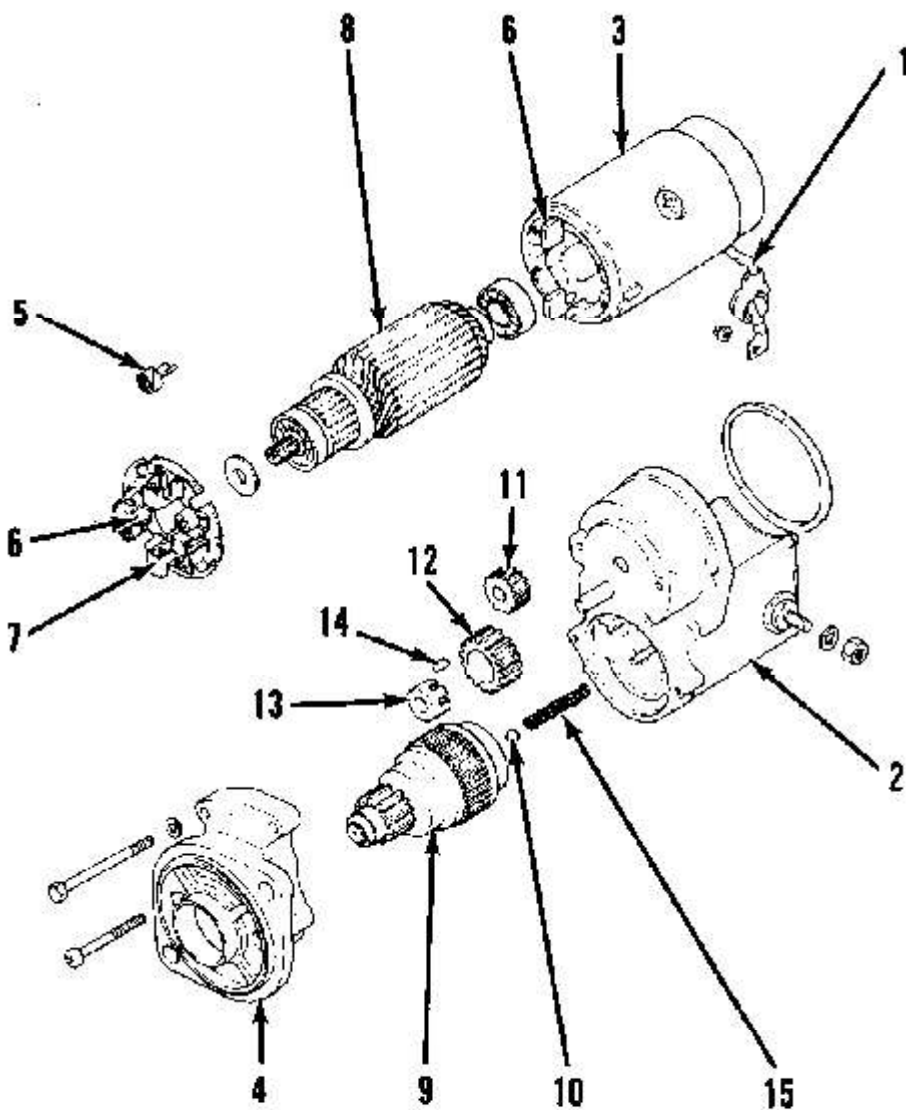


Illustration 1

g00585231

# R2.0 Series Reduction Starting Motor

(1) Motor terminal lead wire

(2) Solenoid

(3) Case of the starting motor

(4) Drive end housing

(5) Brush springs

(6) Brushes

(7) Brush holder

(8) Armature

- (9) Overrunning clutch
- (10) Steel ball
- (11) Armature reduction gear
- (12) Idler gear
- (13) Retainer
- (14) Roller
- (15) Return spring

**Note:** The following information is for the disassembly and assembly of a "R2.0 series" starting motor. All other series of starting motors are similar.

---

[Copyright 1993 - 2023 Caterpillar Inc.](#)

[All Rights Reserved.](#)

[Private Network For SIS Licensees.](#)

Thu Sep 28 11:25:22 UTC+0530 2023

Previous Screen

Product: SKID STEER LOADER

Model: 216 SKID STEER LOADER 4NZ

Configuration: 216 226 228 Skid Steer Loader 4NZ00001-03399 (MACHINE) POWERED BY 3034 Engine

## Disassembly and Assembly

### RA1.2, R1.4, R2.0, R2.2, R2.5, R2.7, R3.0, R4.5 and R5.5 Series Reduction Starting Motors

Media Number -SEN3828-02

Publication Date -01/07/1999

Date Updated -09/10/2001

i01107165

## Starting Motor - Assemble

SMCS - 1453-016

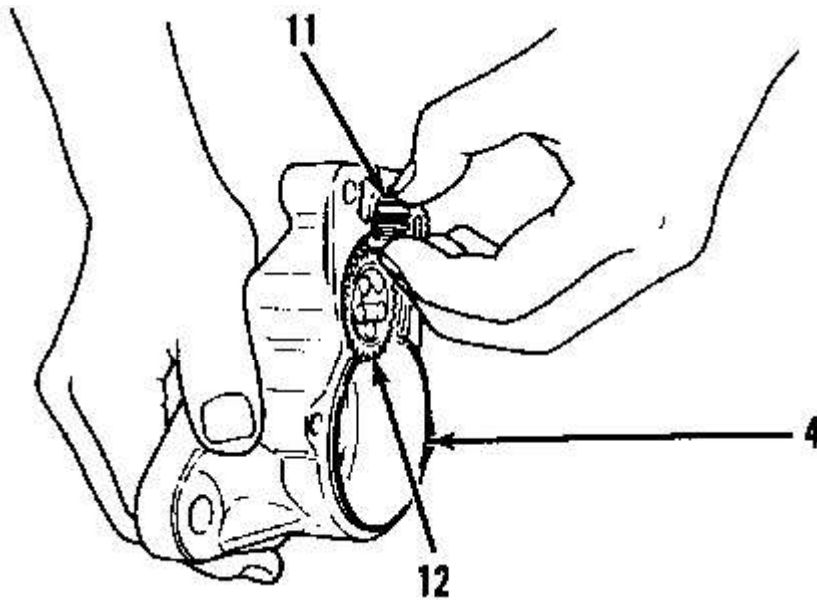


Illustration 1

g00585386

1. Install the return spring (15) into the solenoid (2) .



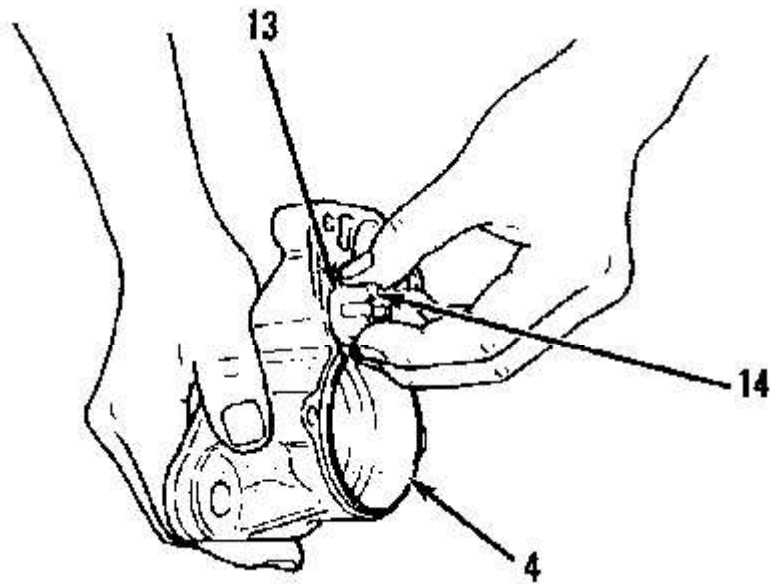


Illustration 2

g00585389

2. Install the rollers (14) and the retainer (13) into the drive end housing (4) .

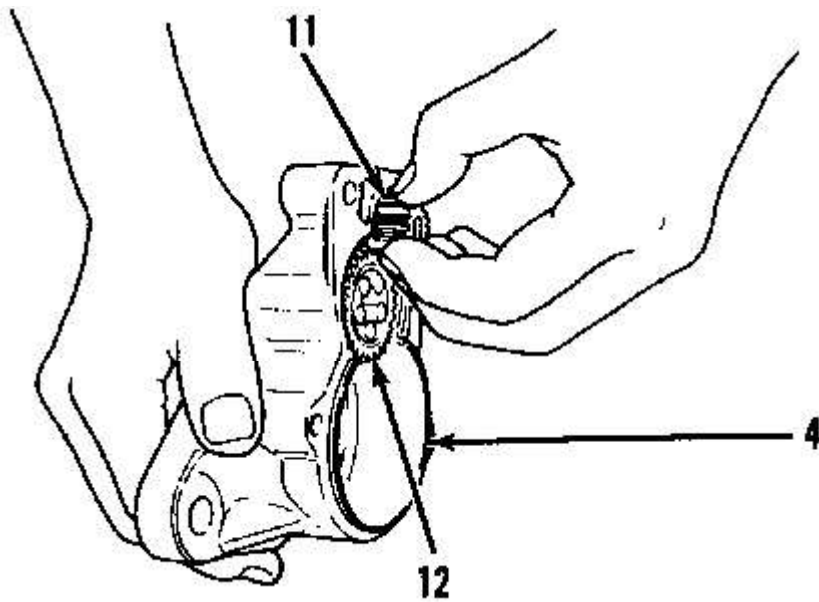
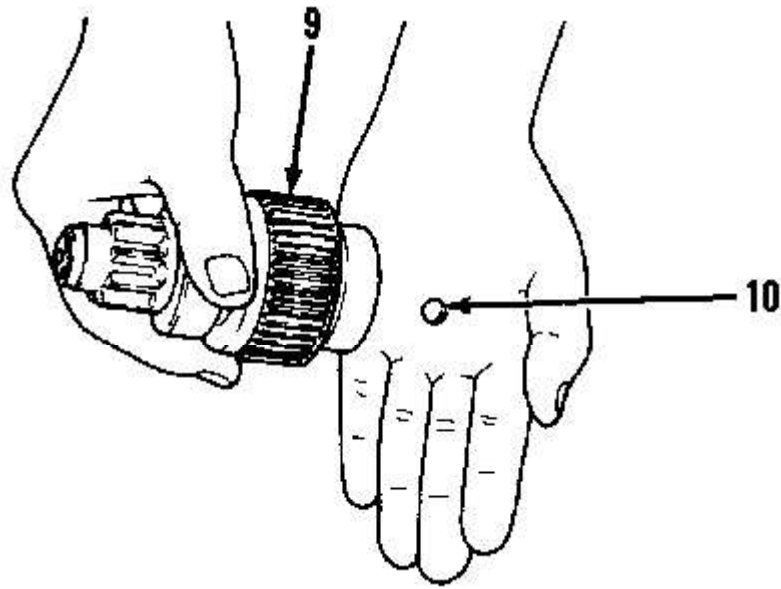


Illustration 3

g00585386

3. Put the idler gear (12) and the armature reduction gear (11) onto the drive end housing (4) .

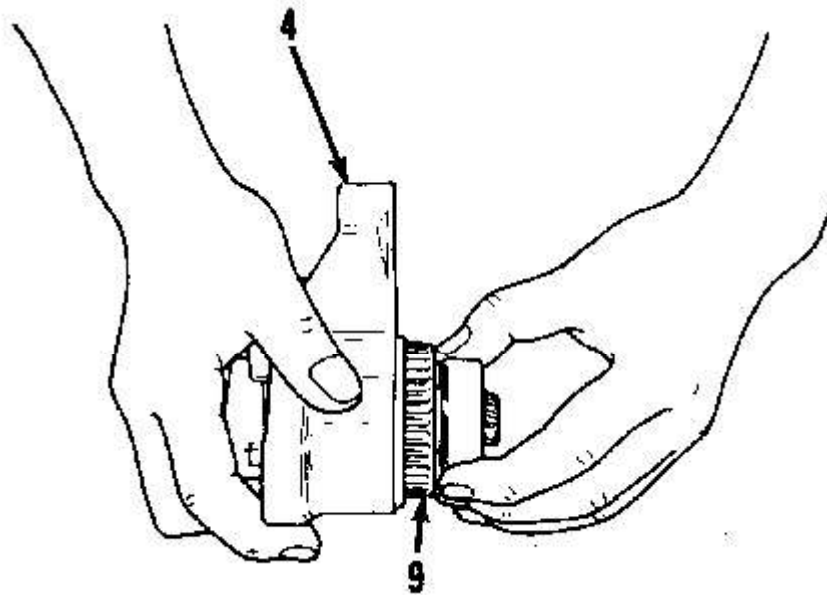


---

Illustration 4

g00585348

4. Put the steel ball (10) into the overrunning clutch (9) .



---

Illustration 5

g00585337

5. Put the overrunning clutch (9) into the drive end housing (4) .
-