



# Service Manual

---

**226B SKID STEER LOADER**

---

**MJH**

KENR6948-04 C1.5 and C2.2 Engines for Caterpillar Built Machines _____	2
REN4893-03 216B, 216B2, 226B, 226B2, 232B, 232B2, 242B and 242B2 Skid Steer Loaders Engine Supplement _____	280
REN4894-05 216B, 226B, 232B and 242B Skid Steer Loaders Power Train _____	385
REN4898-03 216B, 216B2, 226B, 226B2, 232B, 232B2, 242B and 242B2 Skid Steer Loaders Machine Systems _____	544
SEN5006-04 3024C Engine for Caterpillar Built Machines _____	797
UENR3262-00 Seal Installation _____	1005

Alternator - Remove and Install - 55 Amp Alternator _____	4
Alternator - Remove and Install - 65 Amp and 85 Amp Alternators _____	7
Bearing Clearance - Check _____	11
Camshaft - Assemble _____	14
Camshaft - Disassemble _____	16
Camshaft - Install _____	18
Camshaft - Remove _____	22
Connecting Rod Bearings - Install - Connecting rods in position _____	26
Connecting Rod Bearings - Remove - Connecting rods in position _____	29
Coolant Temperature Switch - Remove and Install _____	31
Crankcase Breather - Remove and Install - Naturally Aspirated Engines ____	34
Crankcase Breather - Remove and Install - Turbocharged Engines _____	39
Crankshaft - Install _____	44
Crankshaft - Remove _____	48
Crankshaft Front Seal - Remove and Install _____	51
Crankshaft Main Bearings - Install _____	55
Crankshaft Main Bearings - Remove _____	60
Crankshaft Pulley - Remove and Install _____	64
Crankshaft Rear Seal - Remove and Install _____	67
Crankshaft Wear Sleeve (Rear) - Remove and Install _____	71
Cylinder Head - Install _____	77
Cylinder Head - Remove _____	82
Electric Starting Motor - Remove and Install _____	87
Engine Oil Cooler - Remove and Install _____	90
Engine Oil Line - Remove and Install _____	94
Engine Oil Pan - Remove and Install _____	99
Engine Oil Pressure Switch - Remove and Install _____	103
Engine Oil Pump - Install _____	108
Engine Oil Pump - Remove _____	114
Engine Oil Relief Valve - Remove and Install _____	119

Exhaust Manifold - Remove and Install _____	123
Fan - Remove and Install _____	127
Flywheel - Install _____	130
Flywheel - Remove _____	134
Flywheel Housing - Remove and Install - Engines with Flywheel Housing and Back Plate _____	137
Flywheel Housing - Remove and Install _____	143
Fuel Filter Base - Remove and Install _____	146
Fuel Injection Lines - Remove and Install _____	150
Fuel Injection Pump - Remove and Install _____	157
Fuel Injector - Remove and Install _____	163
Fuel Shutoff Solenoid - Remove and Install _____	167
Fuel Transfer Pump - Remove and Install - Electrical Fuel Transfer Pump ____	170
Fuel Transfer Pump - Remove and Install - Mechanical Fuel Transfer Pump .	173
Glow Plugs - Remove and Install _____	177
Housing (Front) - Assemble _____	180
Housing (Front) - Disassemble _____	189
Housing (Front) - Install _____	196
Housing (Front) - Remove _____	200
Inlet and Exhaust Valve Springs - Remove and Install _____	203
Inlet and Exhaust Valves - Remove and Install _____	210
Lifter Group - Remove and Install _____	219
Pistons and Connecting Rods - Assemble _____	223
Pistons and Connecting Rods - Disassemble _____	228
Pistons and Connecting Rods - Install _____	234
Pistons and Connecting Rods - Remove _____	237
Rocker Shaft - Assemble _____	240
Rocker Shaft - Disassemble _____	243
Rocker Shaft and Pushrod - Install _____	246
Rocker Shaft and Pushrod - Remove _____	249

Turbocharger - Remove and Install _____	252
Valve Mechanism Cover - Remove and Install _____	258
V-Belts - Remove and Install _____	263
Water Pump - Remove and Install _____	266
Water Temperature Regulator - Remove and Install _____	272
Water Temperature Regulator Housing - Remove and Install _____	276

[Previous Screen](#)

Product: SKID STEER LOADER

Model: 226B SKID STEER LOADER MJH

Configuration: 216B 226B 232B 242B Skid Steer Loader MJH00001-10574 (MACHINE) POWERED BY 3024C Engine

## Disassembly and Assembly

### C1.5 and C2.2 Engines for Caterpillar Built Machines

Media Number -KENR6948-04

Publication Date -01/06/2015

Date Updated -30/06/2016

i02601956

## Alternator - Remove and Install - 55 Amp Alternator

SMCS - 1405-010

### Removal Procedure

#### Start By:

- a. Remove the V-Belt. Refer to Disassembly and Assembly, "V-Belts - Remove and Install".

---

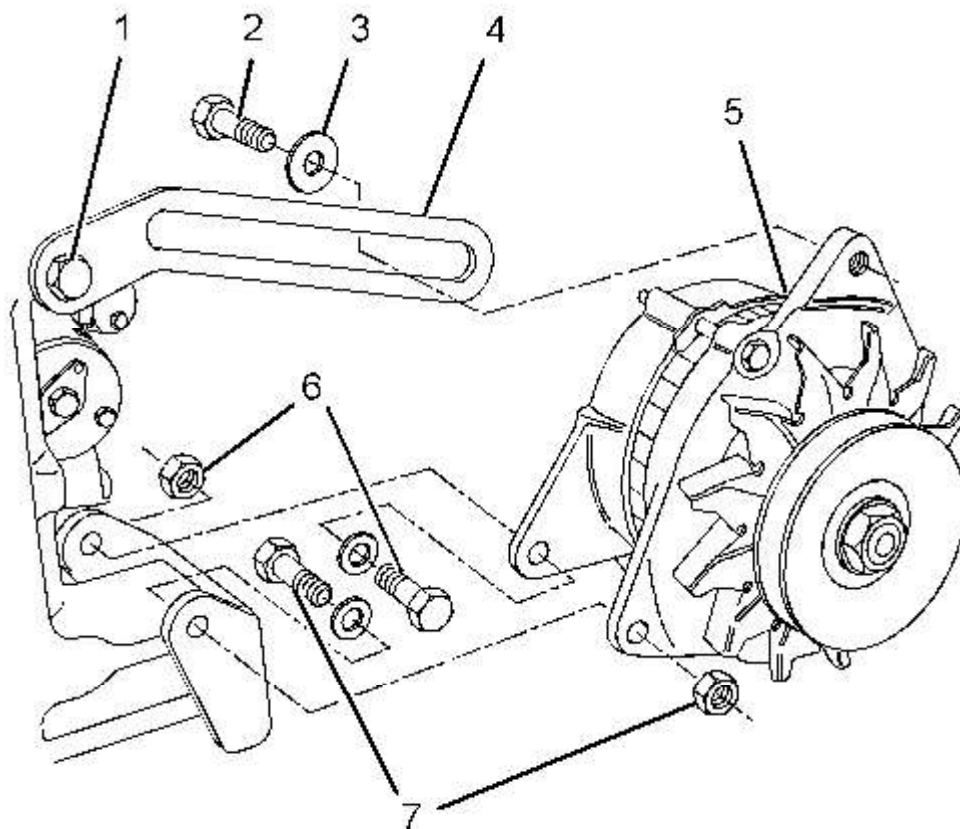
#### NOTICE

**Keep all parts clean from contaminants.**

**Contaminants may cause rapid wear and shortened component life.**

---

1. Turn the battery disconnect switch to the OFF position.
  2. Make temporary identification marks on the connections of the harness assembly.
-



---

Illustration 1  
Typical example

g01308282

3. Disconnect the harness assembly (not shown) from alternator (5).
4. Remove bolt (2) and washer (3) from alternator (5).
5. Remove fasteners (6) and (7) and remove alternator (5) from the mounting bracket.
6. If necessary, remove bolt (2) and remove adjusting link (4).

## Installation Procedure

---

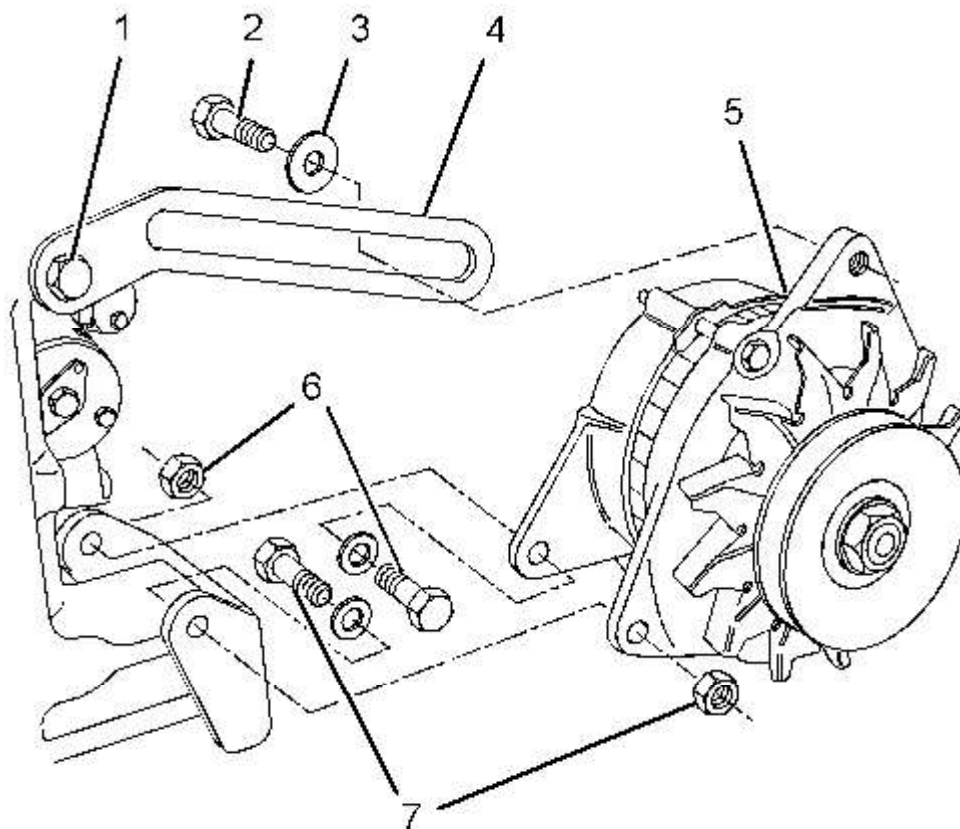


Illustration 2  
Typical example

g01308282

1. If necessary, install adjusting link (4) and install bolt (1) finger tight.
2. Position alternator (5) on the mounting bracket.
3. Install fasteners (6) and (7) finger tight.
4. Install bolt (2) and washer (3) finger tight.
5. Install the V-Belt. Refer to Disassembly and Assembly, "V-Belts - Remove and Install".

**Note:** Ensure that the alternator pulley is in alignment with the crankshaft pulley. Ensure that all fasteners are tightened.

6. Connect the harness assembly (not shown) to the alternator.
7. Turn the battery disconnect switch to the ON position.



[Previous Screen](#)

Product: SKID STEER LOADER

Model: 226B SKID STEER LOADER MJH

Configuration: 216B 226B 232B 242B Skid Steer Loader MJH00001-10574 (MACHINE) POWERED BY 3024C Engine

## Disassembly and Assembly

### C1.5 and C2.2 Engines for Caterpillar Built Machines

Media Number -KENR6948-04

Publication Date -01/06/2015

Date Updated -30/06/2016

i02601962

## Alternator - Remove and Install - 65 Amp and 85 Amp Alternators

SMCS - 1405-010

### Removal Procedure

#### Start By:

- a. Remove the V-Belt. Refer to Disassembly and Assembly, "V-Belts - Remove and Install".

---

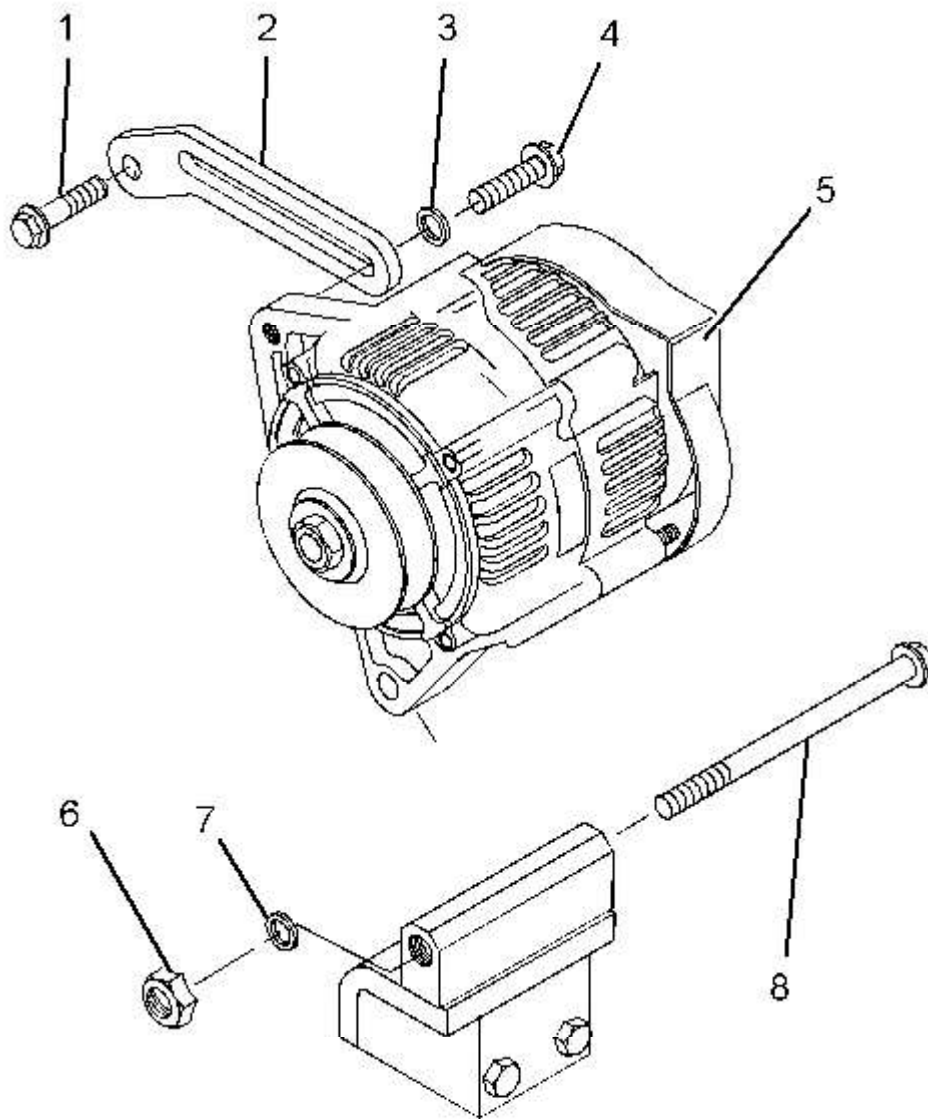
#### NOTICE

**Keep all parts clean from contaminants.**

**Contaminants may cause rapid wear and shortened component life.**

---

1. Turn the battery disconnect switch to the OFF position.
  2. Make temporary identification marks on the connections of the harness assembly.
-



---

Illustration 1  
Typical example

g01308285

3. Disconnect the harness assembly (not shown) from alternator (5).
4. Remove bolt (4) and washer (3) from alternator (5).
5. Remove washer (7) and nut (6). Remove bolt (8) and alternator (5) from the mounting bracket.
6. If necessary, remove bolt (1) and remove adjusting link (2).

## Installation Procedure

---