

Disassembly and Assembly _____	2
Schematic _____	889
Specifications _____	1176
Systems Operation _____	1366
Torque Specifications _____	2286

KENR6941-04 C3.4 Engines for Caterpillar Built Machines	2
UENR0248-03 247B3 and 257B3 Multi Terrain Loaders	321
UENR0251-07 259B3 Compact Track Loader	439
UENR0252-02 259B3 Compact Track Loader	625
UENR3262-00 Seal Installation	825

Alternator - Remove and Install _____	4
Balancer - Assemble _____	8
Balancer - Disassemble _____	12
Balancer - Install _____	16
Balancer - Remove _____	20
Bearing Clearance - Check _____	23
Camshaft - Remove and Install _____	26
Camshaft Gear - Remove and Install _____	31
Connecting Rod Bearings - Install - Connecting rods in position ____	34
Connecting Rod Bearings - Remove - Connecting rods in position _	37
Coolant Temperature Sensor - Remove and Install _____	39
Crankcase Breather - Remove and Install - Turbocharged Engines _	42
Crankshaft - Install _____	45
Crankshaft - Remove _____	54
Crankshaft Front Seal - Remove and Install _____	59
Crankshaft Gear - Remove and Install _____	63
Crankshaft Main Bearings - Remove and Install - Crankshaft in position _____	66
Crankshaft Pulley - Remove and Install _____	78
Crankshaft Rear Seal - Remove and Install _____	83
Crankshaft Wear Sleeve (Rear) - Remove and Install _____	88
Cylinder Head - Install _____	92
Cylinder Head - Remove _____	98
Electric Starting Motor - Remove and Install _____	104
Engine Oil Bypass Valve - Remove and Install _____	107
Engine Oil Cooler - Install _____	110
Engine Oil Cooler - Remove _____	114
Engine Oil Filter Base - Remove and Install _____	118
Engine Oil Pan - Remove and Install _____	121
Engine Oil Pressure Sensor - Remove and Install _____	129

Engine Oil Pump - Install _____	132
Engine Oil Pump - Remove _____	136
Engine Oil Relief Valve - Remove and Install _____	138
Exhaust Manifold - Remove and Install _____	141
Fan - Remove and Install _____	144
Flywheel - Install _____	147
Flywheel - Remove _____	151
Flywheel Housing - Remove and Install _____	154
Front Cover - Remove and Install _____	159
Front Plate - Install _____	162
Front Plate - Remove _____	165
Fuel Injection Lines - Remove and Install - Naturally Aspirated Engines _____	168
Fuel Injection Lines - Remove and Install - Turbocharged Engines _	175
Fuel Injection Pump - Install - Fuel Injection Pumps With a Water Heated Cold Start Device _____	182
Fuel Injection Pump - Install _____	187
Fuel Injection Pump - Remove - Fuel Injection Pumps With a Water Heated Cold Start Device _____	192
Fuel Injection Pump - Remove _____	198
Fuel Injector - Remove and Install - Naturally Aspirated Engines ____	203
Fuel Injector - Remove and Install - Turbocharged Engines _____	206
Fuel Priming Pump and Fuel Filter Base - Remove and Install ____	209
Glow Plugs - Remove and Install _____	212
Housing (Front) - Remove and Install _____	216
Idle Gear - Remove and Install _____	220
Inlet and Exhaust Valve Guides - Remove and Install _____	226
Inlet and Exhaust Valve Seat Inserts - Remove and Install _____	230
Inlet and Exhaust Valve Springs - Remove and Install - Alternative Method _____	233

Inlet and Exhaust Valve Springs - Remove and Install _____	239
Inlet and Exhaust Valves - Remove and Install _____	245
Inlet Manifold - Remove and Install _____	254
Lifter Group - Remove and Install _____	258
Pistons and Connecting Rods - Assemble _____	262
Pistons and Connecting Rods - Disassemble _____	270
Pistons and Connecting Rods - Install _____	277
Pistons and Connecting Rods - Remove _____	281
Rocker Shaft - Assemble _____	283
Rocker Shaft - Disassemble _____	286
Rocker Shaft and Pushrod - Install _____	289
Rocker Shaft and Pushrod - Remove _____	292
Turbocharger - Install _____	295
Turbocharger - Remove _____	299
Valve Mechanism Cover - Remove and Install _____	303
V-Belts - Remove and Install _____	308
Water Pump - Remove and Install _____	311
Water Temperature Regulator Housing - Remove and Install _____	316

[Previous Screen](#)

Product: SKID STEER LOADER

Model: 236B3 SKID STEER LOADER A9H

Configuration: 236B3 Skid Steer Loader A9H00001-UP (MACHINE) POWERED BY C3.4 IND Engine

Disassembly and Assembly

C3.4 Engines for Caterpillar Built Machines

Media Number -KENR6941-04

Publication Date -01/03/2012

Date Updated -01/03/2012

i02639317

Alternator - Remove and Install

SMCS - 1405-010

Removal Procedure

Start By:

- A. Remove the V-Belt. Refer to Disassembly and Assembly, "V-Belts - Remove and Install".

NOTICE

Keep all parts clean from contaminants.

Contaminants may cause rapid wear and shortened component life.

1. Turn the battery disconnect switch to the OFF position.
 2. Make temporary identification marks on the connections of the harness assembly.
-

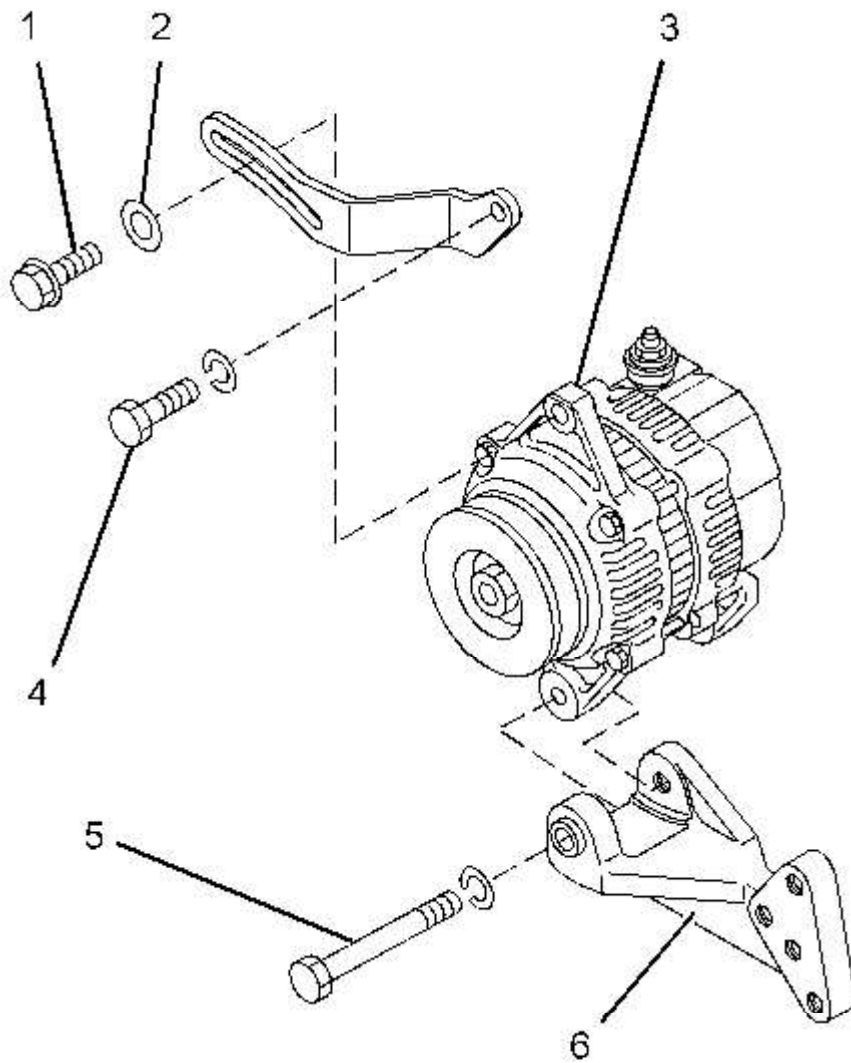


Illustration 1

g01343570

Typical Example

3. Disconnect the harness assembly from alternator (3) .
4. Loosen bolt (4). Remove bolt (1) and washer (2) from alternator (3) .
5. Remove bolt (5) from alternator (3). Remove the alternator from alternator bracket (6) .

Installation Procedure

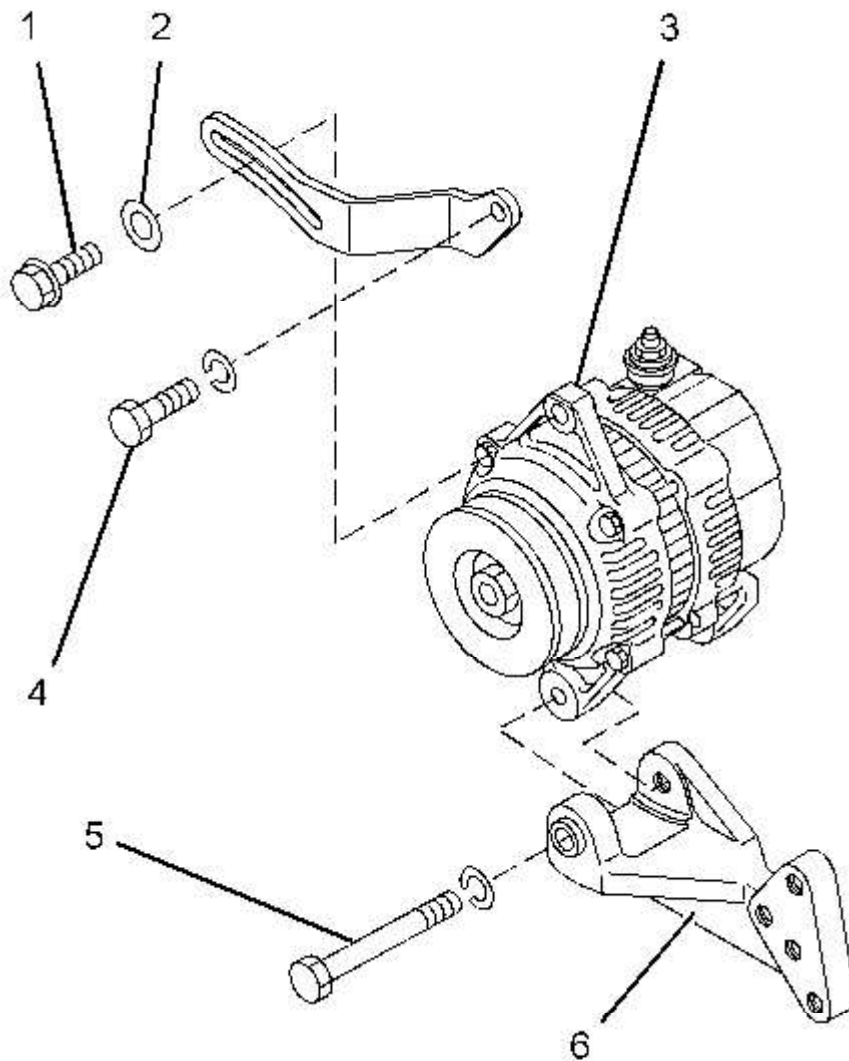


Illustration 2

g01343570

Typical example

1. Position alternator (3) on bracket (6) and install bolt (5) finger tight.
 2. Install bolt (1) and washer (2) finger tight.
 3. Install the V-belt. Refer to Disassembly and assembly, "V-belts - Remove and Install" for the correct procedure.
 4. Tighten bolts (1) and (4) to a torque of 11 N·m (97 lb in). Tighten bolt (5) to a torque of 35 N·m (26 lb ft).
 5. Connect the harness assembly to alternator (3) .
 6. Turn the battery disconnect switch to the ON position.
-

[Previous Screen](#)

Product: SKID STEER LOADER

Model: 236B3 SKID STEER LOADER A9H

Configuration: 236B3 Skid Steer Loader A9H00001-UP (MACHINE) POWERED BY C3.4 IND Engine

Disassembly and Assembly

C3.4 Engines for Caterpillar Built Machines

Media Number -KENR6941-04

Publication Date -01/03/2012

Date Updated -01/03/2012

i02744463

Balancer - Assemble

SMCS - 1220-016

Assembly Procedure

Table 1

Required Tools			
Tool	Part Number	Part Description	Qty
B	1P-1857	Retaining Ring Pliers	1
C	1P-0510	Driver Gp	1
D	9S-3263	Thread Lock Compound	1

NOTICE

Keep all parts clean from contaminants.

Contaminants may cause rapid wear and shortened component life.

1. Ensure that all components of the balancer are clean and free from damage.