



PARTS MANUAL

236D SKID STEER LOADER

BGZ00001-UP

Tip: Use Bookmarks panel to navigate

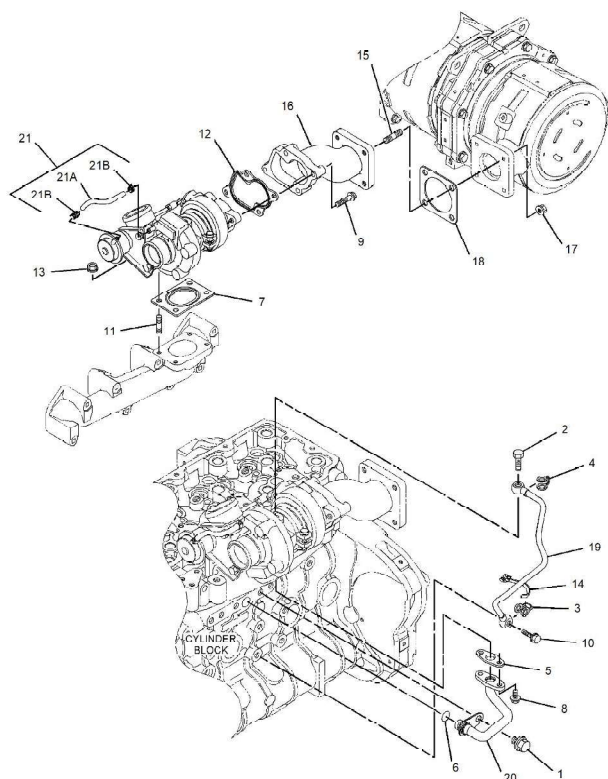
Printed by Heavy Equipment Manuals
v2.20

Printed in U.S.A

[Heavy Equipment Manuals](#)

[Previous Screen](#)

Product: SKID STEER LOADER
Model: 236D SKID STEER LOADER BGZ
Configuration: 236D Skid Steer Loader BGZ00001-UP (MACHINE)
POWERED BY C3.3B Engine



GRAPHIC #1
g03360496

236D Skid Steer Loader, Powered By C3.3B Engine
Media Number - SEBP5968-49 | Publication Date - 01/08/2018 | Date
Updated - 31/08/2018

i06041180

436-2903 TURBOCHARGER GP
PART OF 345-3550 ENGINE AR-PRIMARY
ALSO AN ATTACHMENT

ENTIRE GROUP

Ref.	Qty.	NPR Note	Part No.	Part Name
------	------	----------	----------	-----------

Grp [NPR](#) 436-2903 TURBOCHARGER GP

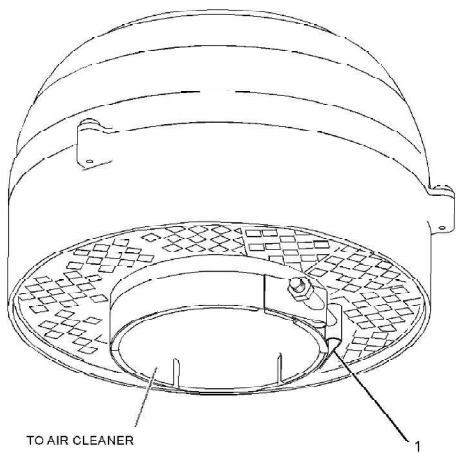
INDIVIDUAL PARTS

Ref.	Qty.	NPR Note	Part No.	Req. Qty.	Part Name
1	<input type="text"/>	NPR	387-9814	1	BOLT-FLANGE HEAD
2	<input type="text"/>	NPR	387-9865	1	EYEBOLT
3	<input type="text"/>	NPR	387-9870	1	GASKET
4	<input type="text"/>	NPR	388-7456	1	GASKET
5	<input type="text"/>	NPR	388-7458	1	GASKET
6	<input type="text"/>	NPR	388-7461	1	SEAL-O-RING
7	<input type="text"/>	NPR	389-5353	1	GASKET
8	<input type="text"/>	NPR	393-7570	2	BOLT-FLANGE HEAD
9	<input type="text"/>	NPR	393-7587	4	BOLT
10	<input type="text"/>	NPR	393-7588	1	BOLT
11	<input type="text"/>	NPR	389-5354	4	STUD
12	<input type="text"/>	NPR	397-9984	1	GASKET
13	<input type="text"/>	NPR	398-2306	4	NUT
14	<input type="text"/>	NPR	421-1884	1	CLAMP
15	<input type="text"/>	NPR	436-0803	4	STUD
16	<input type="text"/>	NPR	436-0822	1	PIPE-EXHAUST
17	<input type="text"/>	NPR	436-0829	4	NUT-FLANGE
18	<input type="text"/>	NPR	436-0854	1	GASKET
19	<input type="text"/>	NPR	436-1082	1	TUBE
20	<input type="text"/>	NPR	436-1083	1	TUBE
21	<input type="text"/>	NPR	436-1920	1	TURBOCHARGER AS
21A	<input type="text"/>	NPR	397-9980	1	HOSE AS
21B	<input type="text"/>	NPR	397-9981	2	CLAMP-HOSE

SMCS Codes		
1052	1053	

Previous Screen

Product: SKID STEER LOADER
Model: 236D SKID STEER LOADER BGZ
Configuration: 236D Skid Steer Loader BGZ00001-UP (MACHINE)
POWERED BY C3.3B Engine



GRAPHIC #1
g01945409

236D Skid Steer Loader, Powered By C3.3B Engine
Media Number - SEBP5968-49 | Publication Date - 01/08/2018 | Date
Updated - 31/08/2018

i03620661

130-3279 PRECLEANER GP -TURBINE
PART OF 388-6641 KIT-PRECLEANER
AN ATTACHMENT

ENTIRE GROUP

Ref.	Qty.	NPR Note	Part No.	Part Name
------	------	----------	----------	-----------

Grp [NPR](#) 130-3279 PRECLEANER GP -TURBINE

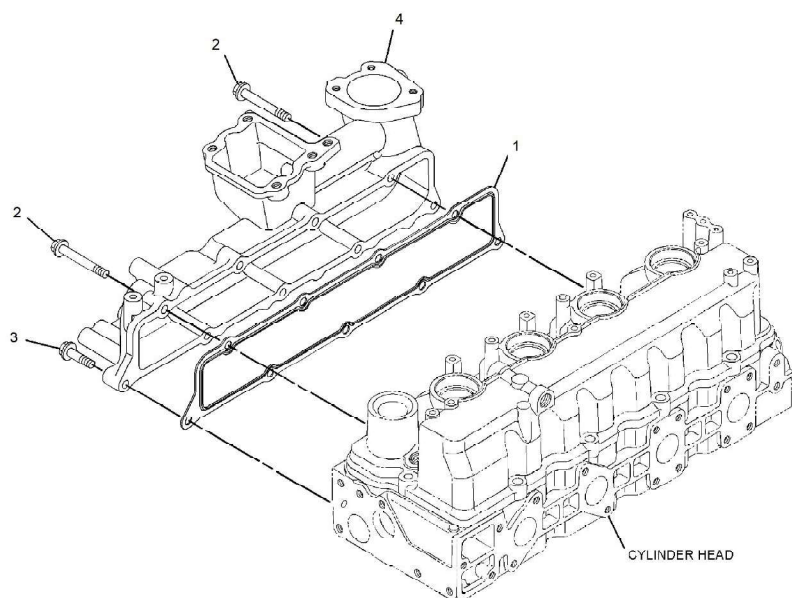
INDIVIDUAL PARTS

Ref.	Qty.	NPR Note	Part No.	Req. Qty.	Part Name
1	<input type="text"/>	NPR	174-5414	1	CLAMP

SMCS Codes		
1055		

[Previous Screen](#)

Product: SKID STEER LOADER
Model: 236D SKID STEER LOADER BGZ
Configuration: 236D Skid Steer Loader BGZ00001-UP (MACHINE)
POWERED BY C3.3B Engine



GRAPHIC #1
g03360031

236D Skid Steer Loader, Powered By C3.3B Engine

Media Number - SEBP5968-49 | Publication Date - 01/08/2018 | Date

Updated - 31/08/2018

i05300603

436-2851 MANIFOLD GP-INLET
PART OF 345-3550 ENGINE AR-PRIMARY
ALSO AN ATTACHMENT

ENTIRE GROUP

Ref.	Qty.	NPR Note	Part No.	Part Name
------	------	----------	----------	-----------

Grp [NPR](#) 436-2851 MANIFOLD GP-INLET

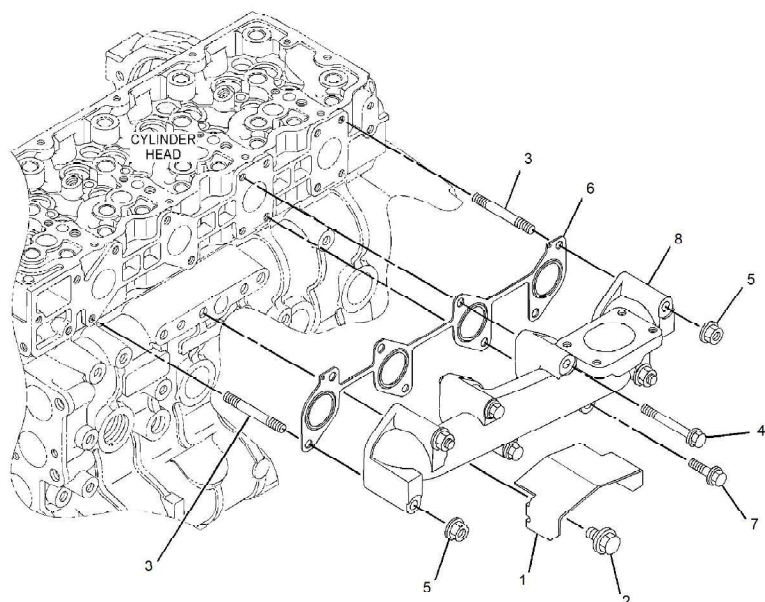
INDIVIDUAL PARTS

Ref.	Qty.	NPR Note	Part No.	Req. Qty.	Part Name
1	<input type="text"/>	NPR	387-9805	1	GASKET
2	<input type="text"/>	NPR	387-9806	2	BOLT-FLANGE HEAD
3	<input type="text"/>	NPR	393-7637	7	BOLT
4	<input type="text"/>	NPR	436-0853	1	MANIFOLD AS-INLET

SMCS Codes		
1058	<input type="text"/>	<input type="text"/>

[Previous Screen](#)

Product: SKID STEER LOADER
Model: 236D SKID STEER LOADER BGZ
Configuration: 236D Skid Steer Loader BGZ00001-UP (MACHINE)
POWERED BY C3.3B Engine



GRAPHIC #1
g03360131

236D Skid Steer Loader, Powered By C3.3B Engine

Media Number - SEBP5968-49 | Publication Date - 01/08/2018 | Date

Updated - 31/08/2018

i05300616

436-2864 MANIFOLD GP-EXHAUST
PART OF 345-3550 ENGINE AR-PRIMARY
ALSO AN ATTACHMENT

ENTIRE GROUP

Ref.	Qty.	NPR Note	Part No.	Part Name
------	------	----------	----------	-----------

Grp [NPR](#) 436-2864 MANIFOLD GP-EXHAUST

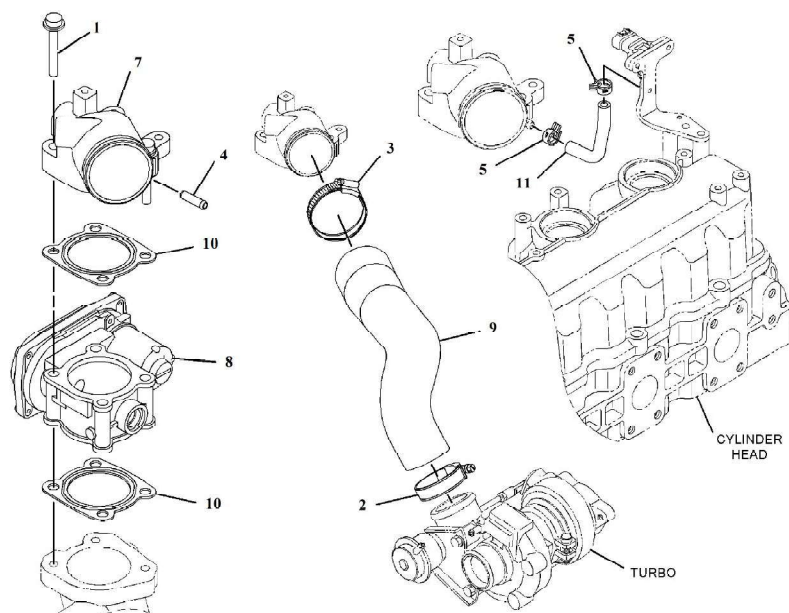
INDIVIDUAL PARTS

Ref.	Qty.	NPR Note	Part No.	Req. Qty.	Part Name
1	<input type="text"/>	NPR	387-9813	1	SHIELD-EXHAUST
2	<input type="text"/>	NPR	387-9814	1	BOLT-FLANGE HEAD
3	<input type="text"/>	NPR	387-9817	4	STUD
4	<input type="text"/>	NPR	389-5170	3	BOLT-FLANGE HEAD
5	<input type="text"/>	NPR	398-2306	4	NUT
6	<input type="text"/>	NPR	436-0855	1	GASKET
7	<input type="text"/>	NPR	436-1913	1	BOLT
8	<input type="text"/>	NPR	436-1918	1	MANIFOLD AS

SMCS Codes		
1059	<input type="text"/>	<input type="text"/>

Previous Screen

Product: SKID STEER LOADER
Model: 236D SKID STEER LOADER BGZ
Configuration: 236D Skid Steer Loader BGZ00001-UP (MACHINE)
 POWERED BY C3.3B Engine



GRAPHIC #1
g06028732

236D Skid Steer Loader, Powered By C3.3B Engine
Media Number - SEBP5968-49 | Publication Date - 01/08/2018 | Date
Updated - 31/08/2018

i06207266

**436-2863 LINES GP-AIR
PART OF 345-3550 ENGINE AR-PRIMARY
ALSO AN ATTACHMENT**

ENTIRE GROUP

Ref.	Qty.	NPR Note	Part No.	Part Name
------	------	----------	----------	-----------