



Service Manual

242B SKID STEER LOADER

BXM

Tip: Use Bookmarks panel to navigate

Printed by Heavy Equipment Manuals
v2.20

Printed in U.S.A

[Heavy Equipment Manuals](#)

Disassembly and Assembly	2
Schematic	1038
Specifications	1181
Systems Operation	1600
Testing and Adjusting	2021
Torque Specifications	2653
Troubleshooting	2709

KENR6948-06 C1.1, C1.5 and C2.2 Engines for Caterpillar Built Machines _____	2
REN4893-03 216B, 216B2, 226B, 226B2, 232B, 232B2, 242B and 242B2 _____	283
REN4894-06 216B, 226B, 232B and 242B Skid Steer Loaders Power Train _____	394
REN4898-03 216B, 216B2, 226B, 226B2, 232B, 232B2, 242B and 242B2 Skid Steer Loaders Machine Systems _____	525
SENR5006-04 3024C Engine for Caterpillar Built Machines _____	770
UENR3262-00 Seal Installation _____	972

Alternator - Remove and Install - 55 Amp Alternator _____	4
Alternator - Remove and Install - 65 Amp and 85 Amp Alternators _	7
Bearing Clearance - Check _____	11
Camshaft - Assemble _____	14
Camshaft - Disassemble _____	16
Camshaft - Install _____	18
Camshaft - Remove _____	22
Connecting Rod Bearings - Remove - Connecting rods in position (2) _____	26
Connecting Rod Bearings - Remove - Connecting rods in position _	29
Coolant Temperature Switch - Remove and Install _____	31
Crankcase Breather - Remove and Install - Naturally Aspirated Engines _____	34
Crankcase Breather - Remove and Install - Turbocharged Engines _	39
Crankshaft - Install _____	44
Crankshaft - Remove _____	48
Crankshaft Front Seal - Remove and Install _____	51
Crankshaft Main Bearings - Install _____	55
Crankshaft Main Bearings - Remove _____	59
Crankshaft Pulley - Remove and Install _____	63
Crankshaft Rear Seal - Remove and Install _____	66
Crankshaft Wear Sleeve (Rear) - Remove and Install _____	70
Cylinder Head - Install _____	76
Cylinder Head - Remove _____	89
Electric Starting Motor - Remove and Install _____	96
Engine Oil Cooler - Remove and Install _____	99
Engine Oil Line - Remove and Install _____	103
Engine Oil Pan - Remove and Install _____	108
Engine Oil Pressure Switch - Remove and Install _____	111
Engine Oil Pump - Install _____	116

Engine Oil Pump - Remove _____	122
Engine Oil Relief Valve - Remove and Install _____	127
Exhaust Manifold - Remove and Install _____	130
Fan - Remove and Install _____	133
Flywheel - Install _____	136
Flywheel - Remove _____	140
Flywheel Housing - Remove and Install - Engines with Flywheel Housing and Back Plate _____	143
Flywheel Housing - Remove and Install _____	148
Fuel Filter Base - Remove and Install _____	151
Fuel Injection Lines - Remove and Install _____	155
Fuel Injection Pump - Remove and Install _____	162
Fuel Injector - Remove and Install _____	168
Fuel Shutoff Solenoid - Remove and Install _____	172
Fuel Transfer Pump - Remove and Install - Electrical Fuel Transfer Pump _____	175
Fuel Transfer Pump - Remove and Install - Mechanical Fuel Transfer Pump _____	178
Glow Plugs - Remove and Install _____	182
Housing (Front) - Assemble _____	185
Housing (Front) - Disassemble _____	193
Housing (Front) - Install _____	199
Housing (Front) - Remove _____	203
Inlet and Exhaust Valve Springs - Remove and Install _____	206
Inlet and Exhaust Valves - Remove and Install _____	213
Lifter Group - Remove and Install _____	221
Pistons and Connecting Rods - Assemble _____	224
Pistons and Connecting Rods - Disassemble _____	229
Pistons and Connecting Rods - Install _____	235
Pistons and Connecting Rods - Remove _____	238

Rocker Shaft - Assemble - C1.5 and C2.2 Engines _____	241
Rocker Shaft - Disassemble - C1.5 and C2.2 Engines _____	244
Rocker Shaft and Pushrod - Install _____	247
Rocker Shaft and Pushrod - Remove _____	250
Turbocharger - Remove and Install _____	253
Valve Mechanism Cover - Remove and Install _____	259
V-Belts - Remove and Install _____	264
Water Pump - Remove and Install - C1.5 and C2.2 Engines _____	267
Water Temperature Regulator - Remove and Install _____	275
Water Temperature Regulator Housing - Remove and Install _____	279

[Previous Screen](#)

Product: SKID STEER LOADER

Model: 242B SKID STEER LOADER BXM

Configuration: 242B2 Skid Steer Loader BXM04225-UP (MACHINE) POWERED BY 3024C Engine

Disassembly and Assembly

C1.1, C1.5 and C2.2 Engines for Caterpillar Built Machines

Media Number -KENR6948-06

Publication Date -01/06/2015

Date Updated -02/08/2018

i02601956

Alternator - Remove and Install - 55 Amp Alternator

SMCS - 1405-010

S/N - CMY1-UP

S/N - CYP1-UP

S/N - CYS1-UP

Removal Procedure

Start By:

- a. Remove the V-Belt. Refer to Disassembly and Assembly, "V-Belts - Remove and Install".

NOTICE

Keep all parts clean from contaminants.

Contaminants may cause rapid wear and shortened component life.

1. Turn the battery disconnect switch to the OFF position.
 2. Make temporary identification marks on the connections of the harness assembly.
-

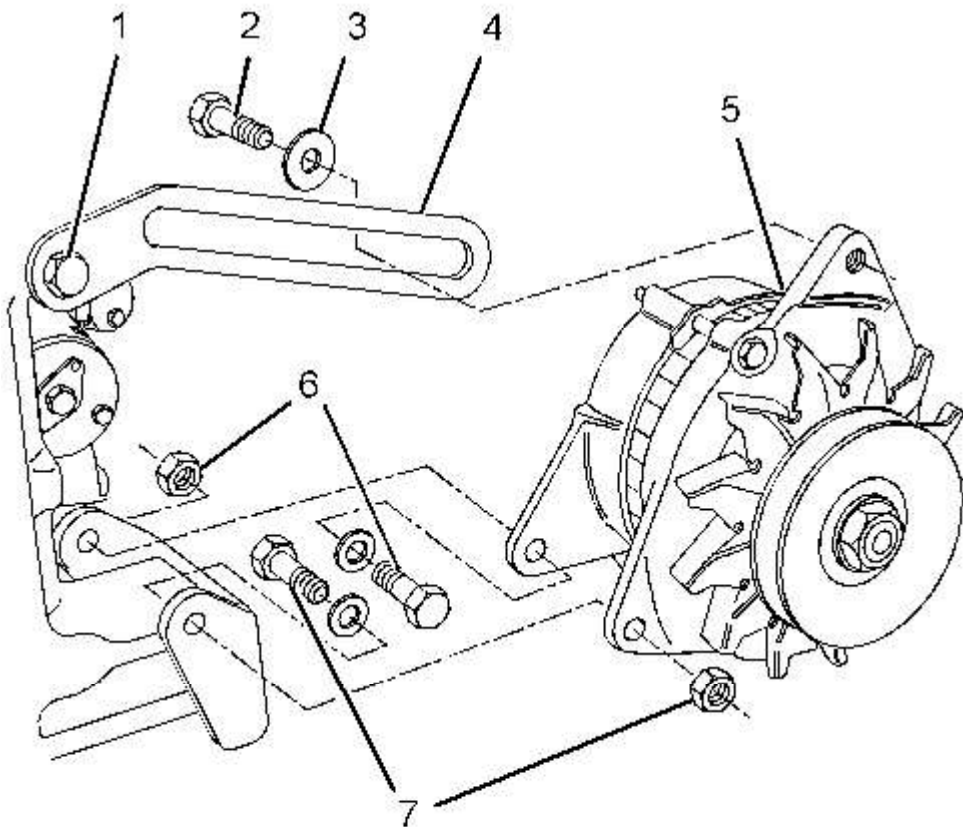


Illustration 1
Typical example

g01308282

3. Disconnect the harness assembly (not shown) from alternator (5).
4. Remove bolt (2) and washer (3) from alternator (5).
5. Remove fasteners (6) and (7) and remove alternator (5) from the mounting bracket.
6. If necessary, remove bolt (2) and remove adjusting link (4).

Installation Procedure

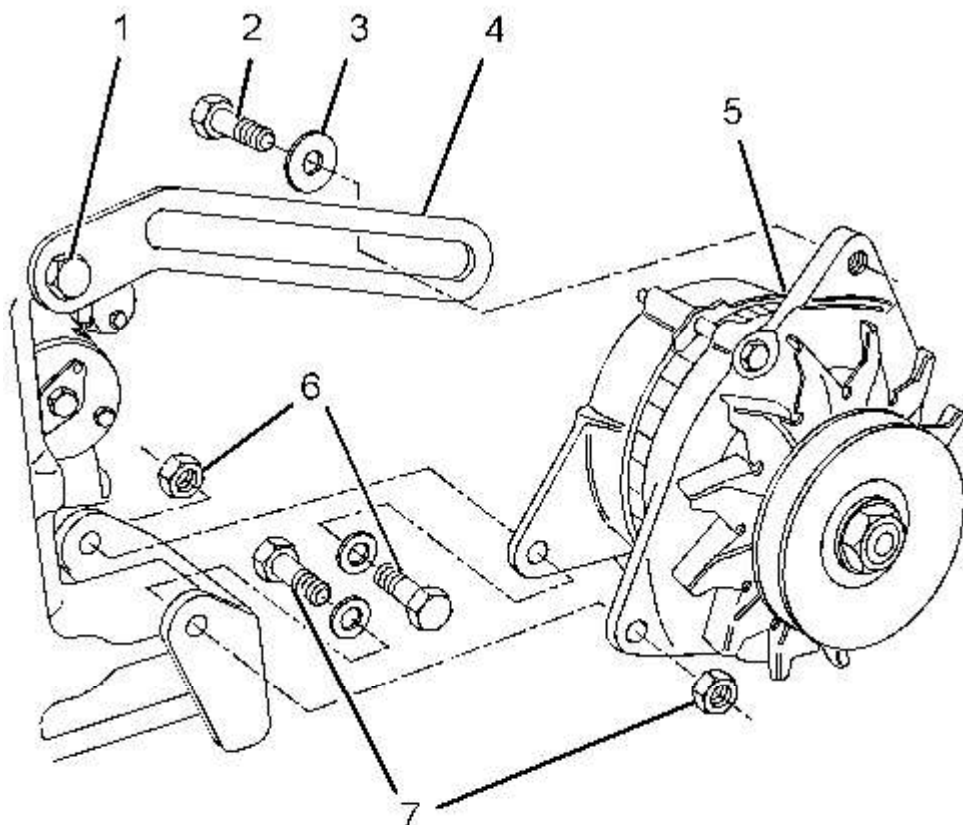


Illustration 2
Typical example

g01308282

1. If necessary, install adjusting link (4) and install bolt (1) finger tight.
2. Position alternator (5) on the mounting bracket.
3. Install fasteners (6) and (7) finger tight.
4. Install bolt (2) and washer (3) finger tight.
5. Install the V-Belt. Refer to Disassembly and Assembly, "V-Belts - Remove and Install".

Note: Ensure that the alternator pulley is in alignment with the crankshaft pulley. Ensure that all fasteners are tightened.

6. Connect the harness assembly (not shown) to the alternator.
7. Turn the battery disconnect switch to the ON position.

[Previous Screen](#)

Product: SKID STEER LOADER

Model: 242B SKID STEER LOADER BXM

Configuration: 242B2 Skid Steer Loader BXM04225-UP (MACHINE) POWERED BY 3024C Engine

Disassembly and Assembly

C1.1, C1.5 and C2.2 Engines for Caterpillar Built Machines

Media Number -KENR6948-06

Publication Date -01/06/2015

Date Updated -02/08/2018

i02601962

Alternator - Remove and Install - 65 Amp and 85 Amp Alternators

SMCS - 1405-010

S/N - CMY1-UP

S/N - CYP1-UP

S/N - CYS1-UP

Removal Procedure

Start By:

- Remove the V-Belt. Refer to Disassembly and Assembly, "V-Belts - Remove and Install".

NOTICE

Keep all parts clean from contaminants.

Contaminants may cause rapid wear and shortened component life.

- Turn the battery disconnect switch to the OFF position.
 - Make temporary identification marks on the connections of the harness assembly.
-