



# PARTS MANUAL

---

**246D SKID STEER LOADER**

---

BYF00001-UP

**Tip: Use Bookmarks panel to navigate**

---

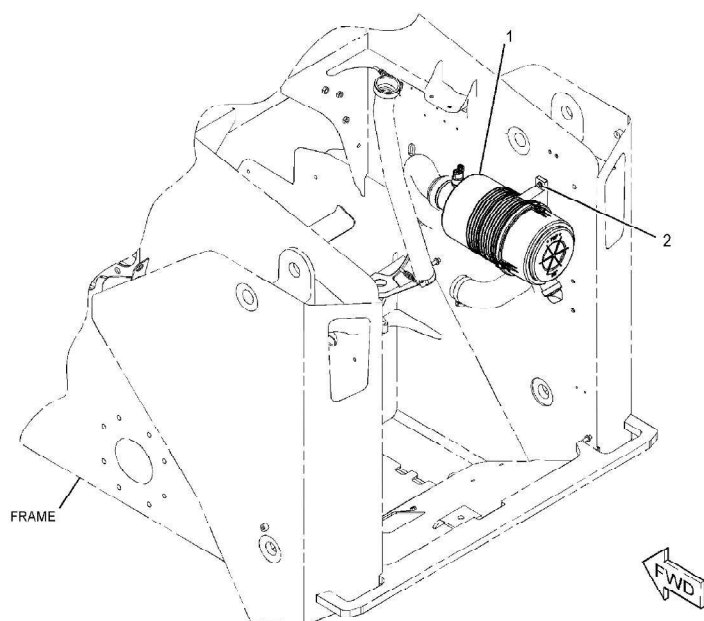
Printed by Heavy Equipment Manuals  
v2.20

Printed in U.S.A

[Heavy Equipment Manuals](#)

Previous Screen

Product: SKID STEER LOADER  
 Model: 246D SKID STEER LOADER BYF  
 Configuration: 246D Skid Steer Loader BYF00001-UP (MACHINE) POWERED BY C3.3B Engine



GRAPHIC #1  
 g03644299

## 246D Skid Steer Loader, Powered By C3.3B Engine

Media Number - SEBP5972-25 | Publication Date - 01/01/2018 | Date Updated - 11/01/2018

i05713909

**345-3498 AIR CLEANER GP**  
**PART OF 345-3449 INSTALLATION AR-ENGINE**  
**ALSO AN ATTACHMENT**

### ENTIRE GROUP

Ref. Qty.	NPR Note	Part No.	Part Name
Grp <input type="text"/>	<a href="#">NPR</a>	345-3498	AIR CLEANER GP

### INDIVIDUAL PARTS

Ref. Qty.	NPR Note	Part No.	Req. Qty.	Part Name
1	<a href="#">NPR</a> Y	<a href="#">345-3499</a>	1	AIR CLEANER GP

2	<div></div>	<div></div>	<div></div>	266-3315	2	BOLT-FLANGE HEAD (M8X1.25X25.5-MM)
---	-------------	-------------	-------------	----------	---	---------------------------------------

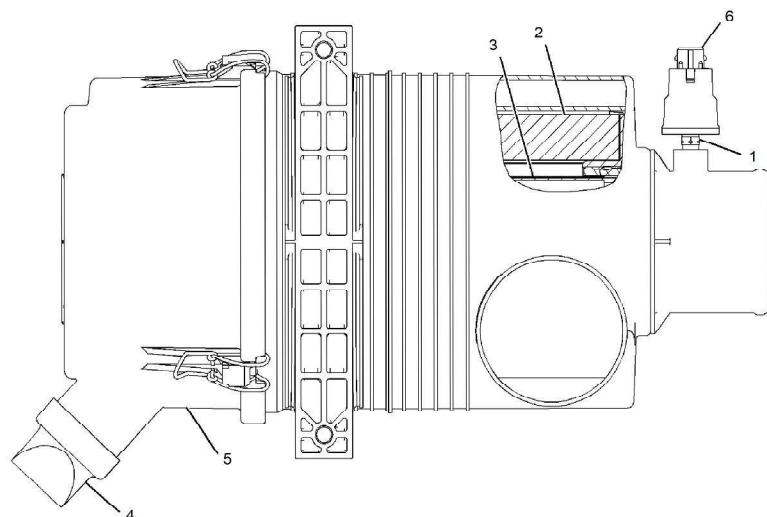
Key:

M - METRIC PART  
Y - SEPARATE ILLUSTRATION

SMCS Codes		
1051	1054	

Previous Screen

Product: SKID STEER LOADER  
 Model: 246D SKID STEER LOADER BYF  
 Configuration: 246D Skid Steer Loader BYF00001-UP (MACHINE) POWERED BY C3.3B Engine



GRAPHIC #1  
 g02878740

## 246D Skid Steer Loader, Powered By C3.3B Engine

Media Number - SEBP5972-25 | Publication Date - 01/01/2018 | Date Updated - 11/01/2018

i04769366

**345-3499 AIR CLEANER GP**  
**PART OF 345-3498 AIR CLEANER GP**  
**ALSO AN ATTACHMENT**

### ENTIRE GROUP

Ref.	Qty.	NPR Note	Part No.	Part Name
Grp	<input type="text"/>	<a href="#">NPR</a>	345-3499	AIR CLEANER GP

### INDIVIDUAL PARTS

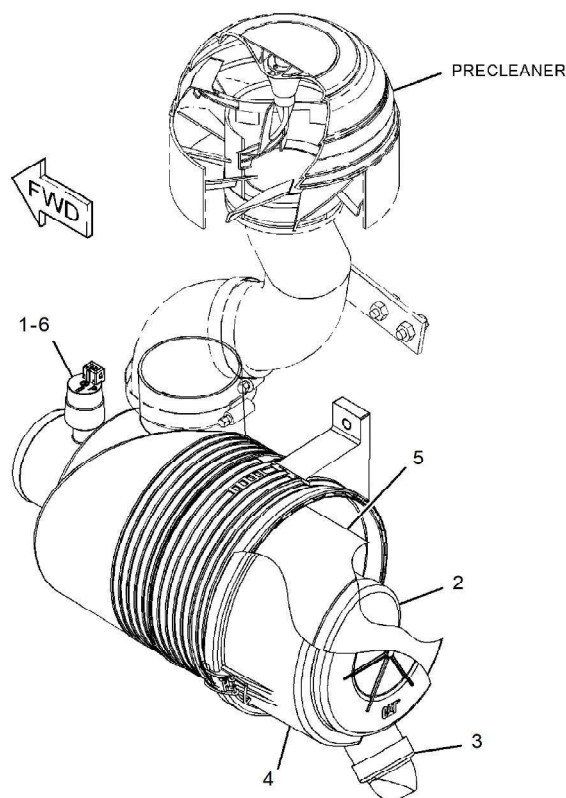
Ref.	Qty.	NPR Note	Part No.	Req. Qty.	Part Name
1		<a href="#">NPR</a>	5L-3233	1	FITTING-CONNECTOR

2		<a href="#">NPR</a>	110-6326	1	FILTER ELEMENT AS-AIR (PRIMARY)
3		<a href="#">NPR</a>	110-6331	1	FILTER ELEMENT AS-AIR (SECONDARY)
4		<a href="#">NPR</a>	112-9717	1	VALVE-DUST (AIR CLEANER)
5		<a href="#">NPR</a>	211-3499	1	COVER
6		<a href="#">NPR</a>	387-9572	1	INDICATOR-RESTRICTION (AIR CLEANER)

SMCS Codes		
1051	1054	

Previous Screen

Product: SKID STEER LOADER  
 Model: 246D SKID STEER LOADER BYF  
 Configuration: 246D Skid Steer Loader BYF00001-UP (MACHINE) POWERED BY C3.3B Engine



GRAPHIC #1  
 g02851380

## 246D Skid Steer Loader, Powered By C3.3B Engine

Media Number - SEBP5972-25 | Publication Date - 01/01/2018 | Date  
 Updated - 11/01/2018

i04753150

**376-8669 AIR CLEANER GP**  
**PART OF 415-2795 KIT-PRECLEANER**  
**AN ATTACHMENT**

### ENTIRE GROUP

Ref.	Qty.	NPR Note	Part No.	Part Name
Grp	<input type="text"/>	<a href="#">NPR</a>	376-8669	AIR CLEANER GP

### INDIVIDUAL PARTS

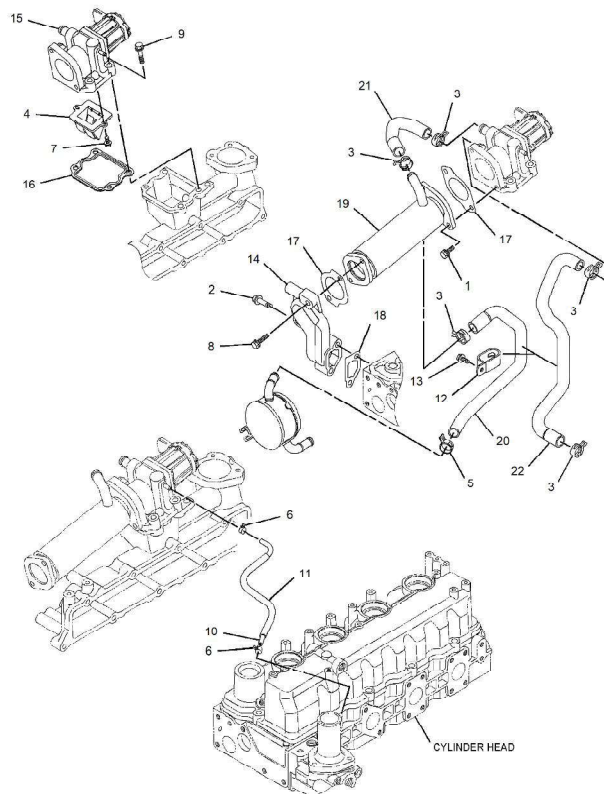
Ref.	Qty.	NPR Note	Part No.	Req. Qty.	Part Name
1		<a href="#">NPR</a>	5L-3233	1	FITTING-CONNECTOR

2		<a href="#">NPR</a>	110-6331	1	FILTER ELEMENT AS-AIR (SECONDARY)
3		<a href="#">NPR</a>	112-9717	1	VALVE-DUST (AIR CLEANER)
4		<a href="#">NPR</a>	211-3499	1	COVER
5		<a href="#">NPR</a>	361-3532	1	FILTER ELEMENT AS-AIR (PRIMARY)
6		<a href="#">NPR</a>	387-9572	1	INDICATOR-RESTRICTION (AIR CLEANER)

SMCS Codes		
1051	1054	

Previous Screen

Product: SKID STEER LOADER  
 Model: 246D SKID STEER LOADER BYF  
 Configuration: 246D Skid Steer Loader BYF00001-UP (MACHINE) POWERED BY C3.3B Engine



GRAPHIC #1  
 g03359696

## 246D Skid Steer Loader, Powered By C3.3B Engine

Media Number - SEBP5972-25 | Publication Date - 01/01/2018 | Date Updated - 11/01/2018

i05300609

## 436-2850 COOLER GP-EXHAUST (NRS) PART OF 345-3550 ENGINE AR-PRIMARY

### ENTIRE GROUP

Ref.	Qty.	NPR Note	Part No.	Part Name
Grp	<input type="text"/>	<a href="#">NPR</a>	436-2850	COOLER GP-EXHAUST (NRS)

### INDIVIDUAL PARTS

Ref.	Qty.	NPR Note	Part No.	Req. Qty.	Part Name
1	<input type="text"/>	<a href="#">NPR</a>	383-0188	2	BOLT

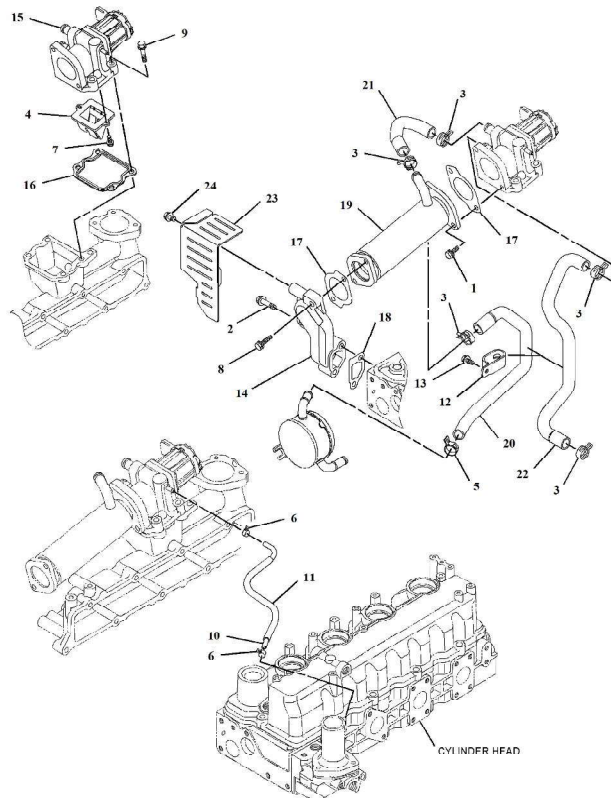


2		<a href="#">NPR</a>	383-0190	2	BOLT
3		<a href="#">NPR</a>	383-0396	5	CLAMP-HOSE
4		<a href="#">NPR</a>	388-7466	1	VALVE
5		<a href="#">NPR</a>	388-7474	1	CLAMP
6		<a href="#">NPR</a>	389-5383	2	CLAMP
7		<a href="#">NPR</a>	393-7570	2	BOLT-FLANGE HEAD
8		<a href="#">NPR</a>	393-7574	2	BOLT-FLANGE HEAD
9		<a href="#">NPR</a>	393-7637	4	BOLT
10		<a href="#">NPR</a>	397-9966	1	PIPE
11		<a href="#">NPR</a>	397-9967	1	TUBE
12		<a href="#">NPR</a>	397-9977	1	CLAMP
13		<a href="#">NPR</a>	418-0967	1	BOLT-FLANGE HEAD
14		<a href="#">NPR</a>	436-0824	1	BASE
15		<a href="#">NPR</a>	436-0825	1	VALVE AS
16		<a href="#">NPR</a>	436-0858	1	GASKET
17		<a href="#">NPR</a>	436-0859	2	GASKET
18		<a href="#">NPR</a>	436-0860	1	GASKET
19		<a href="#">NPR</a>	436-1909	1	COOLER AS
20		<a href="#">NPR</a>	436-1910	1	HOSE
21		<a href="#">NPR</a>	436-1911	1	HOSE
22		<a href="#">NPR</a>	436-1912	1	HOSE

SMCS Codes		
1061	1087	108C
108G		

Previous Screen

Product: SKID STEER LOADER  
 Model: 246D SKID STEER LOADER BYF  
 Configuration: 246D Skid Steer Loader BYF00001-UP (MACHINE) POWERED BY C3.3B Engine



GRAPHIC #1  
 g06029988

## 246D Skid Steer Loader, Powered By C3.3B Engine

Media Number - SEBP5972-25 | Publication Date - 01/01/2018 | Date Updated - 11/01/2018

i06264739

**436-2850 COOLER GP-EXHAUST (NRS)**  
**PART OF 345-3550 ENGINE AR-PRIMARY**  
**ALSO AN ATTACHMENT**

### ENTIRE GROUP

Ref.	Qty.	NPR Note	Part No.	Part Name
Grp	<input type="text"/>	<a href="#">NPR</a>	436-2850	COOLER GP-EXHAUST (NRS)

### INDIVIDUAL PARTS

Ref.	Qty.	NPR Note	Part No.	Req. Qty.	Part Name
1		<a href="#">NPR</a>	383-0188	2	BOLT