



PARTS MANUAL

5130 TRACTOR

PRINTED BY :
heavy-equipmentmanual.com

B0 - ENGINE**GENERAL**

| | |
|------------------------------------|-------------|
| ENGINE TCD3.6L4 - 88kW EPA4i..... | B0.00.3 (1) |
| ENGINE TCD3.6L4 - 88kW2200E4i..... | B0.00.8 (1) |

CYLINDER BLOCK

| | |
|--|-------------|
| MONOBLOC ENGINE-GEARBOX CONNECTING FLANGE..... | B0.01.0 (2) |
| SERIE GUARNIZIONI..... | B0.01.1 |
| BLEEDING TUBE..... | B0.01.2 |
| BLEEDING TUBE..... | B0.01.4 |
| DIPSTICK..... | B0.01.6 |
| CLOSING COMPONENTS..... | B0.01.7 |
| SEALING..... | B0.01.8 |
| ZYL.KURBELGEHAEUSE..... | B0.01.10 |

CRANKSHAFT

| | |
|--|-------------|
| ENGINE FLYWHEEL..... | B0.02.0 (1) |
| COOLANT PUMP AND COMPRESSOR DRIVEBELT..... | B0.02.1 (1) |
| CRANKSHAFT..... | B0.02.3 |
| COUNTERWEIGHTS..... | B0.02.5 |
| V-GROOVED PULLEY..... | B0.02.8 |

CYLINDERS - PISTONS - CONNECTING RODS

| | |
|---------------------|---------|
| PISTON..... | B0.03.0 |
| CONNECTING ROD..... | B0.03.1 |

TIMING

| | |
|------------------------|----------|
| FASTENINGS..... | B0.04.1 |
| TUNNEL COVER..... | B0.04.2 |
| CAMSHAFT..... | B0.04.5 |
| VALVE DRIVE..... | B0.04.7 |
| INTERMEDIATE GEAR..... | B0.04.9 |
| GEARCASE..... | B0.04.13 |

CYLINDER HEAD

| | |
|---|---------|
| FASTENINGS..... | B0.05.0 |
| CYLINDER HEAD..... | B0.05.1 |
| CYLINDER HEAD..... | B0.05.2 |
| VALVE MECHAN.COVER..... | B0.05.4 |
| SHAFT PROTECTOR - DRIVEN STEERING AXLE..... | B0.05.5 |

LUBRICATION

| | |
|-------------------------|---------|
| FILTERKONSOLE..... | B0.06.0 |
| SUPPORT..... | B0.06.1 |
| OIL FILLER NECK..... | B0.06.2 |
| OELWANNE..... | B0.06.3 |
| OELWANNE..... | B0.06.4 |
| LUBRIC. OIL COOLER..... | B0.06.5 |

| | |
|---|----------|
| LUBRICAT. OIL LINE..... | B0.06.6 |
| LUBRICAT. OIL PUMP..... | B0.06.8 |
| PLUG..... | B0.06.10 |
| OIL INTAKE LINE..... | B0.06.11 |
| OIL INTAKE LINE..... | B0.06.12 |
| OIL RETURN..... | B0.06.13 |
| FUEL INJECTION SYSTEM | |
| FASTENINGS..... | B0.07.0 |
| FUEL INJECT. PUMP..... | B0.07.1 |
| INJECT. PUMP DRIVE..... | B0.07.2 |
| FUEL INJECTOR..... | B0.07.3 |
| FUEL FILTER..... | B0.07.4 |
| FUEL FILTER..... | B0.07.5 |
| FUEL PIPE..... | B0.07.6 |
| RELAY..... | B0.07.7 |
| ENGAGEMENT..... | B0.07.9 |
| FUEL SUPPLY PUMP..... | B0.07.10 |
| COMMON RAIL..... | B0.07.12 |
| MECHANICAL - ELECTRONIC GOVERNOR | |
| ELECTRONIC CONTROL UNIT - ENGINE..... | B0.08.0 |
| COOLING | |
| V-GROOVED PULLEY..... | B0.09.0 |
| V-GROOVED PULLEY..... | B0.09.1 |
| COOLING WATER PIPE..... | B0.09.2 |
| KUEHLWASSERLEITUNG..... | B0.09.4 |
| THERMOSTAT..... | B0.09.5 |
| KUEHLMITTELPUMPE..... | B0.09.7 |
| INTAKE - EXHAUST MANIFOLDS | |
| GLUEHKERZE..... | B0.10.0 |
| MANIFOLD..... | B0.10.3 |
| MANIFOLD..... | B0.10.4 |
| SCREW PLUG..... | B0.10.5 |
| EXHAUST MANIFOLD..... | B0.10.6 |
| EXHAUST MANIFOLD..... | B0.10.7 |
| CONNECTION PIECE..... | B0.10.8 |
| PIPING..... | B0.10.9 |
| OIL PRESSUR.SWITCH..... | B0.10.10 |
| SHAFT PROTECTOR - DRIVEN STEERING AXLE..... | B0.10.12 |
| SHAFT PROTECTOR - DRIVEN STEERING AXLE..... | B0.10.13 |
| AGR-KUEHLER..... | B0.10.14 |
| TURBOCHARGER | |
| TURBOCHARGER..... | B0.11.0 |
| Electrical accessories | |
| FASTENINGS..... | B0.12.0 |

| | |
|--------------------------|----------|
| FASTENINGS..... | B0.12.1 |
| FASTENINGS..... | B0.12.2 |
| IMPULSE TRANSMITTER..... | B0.12.3 |
| GENERATOR..... | B0.12.3 |
| KABELBAUM..... | B0.12.7 |
| KABELBAUM..... | B0.12.8 |
| CONSOLE..... | B0.12.9 |
| ELECTRICAL SYSTEM..... | B0.12.10 |
| ELECTRICAL SYSTEM..... | B0.12.11 |
| ELECTRICAL SYSTEM..... | B0.12.12 |
| OIL PRESSURE SENSOR..... | B0.12.15 |
| RELAY..... | B0.12.16 |
| PROTECTING CAP..... | B0.12.17 |
| PROTECTING CAP..... | B0.12.18 |
| STARTER..... | B0.12.20 |
| BELT STRETCHER..... | B0.12.21 |
| BELT STRETCHER..... | B0.12.22 |
| PLUG-IN CONNECTOR..... | B0.12.25 |
| SENSOR - RPM - PTO..... | B0.12.30 |

5130

Section: B0 - ENGINE

Ref: B0.00.3 (1)

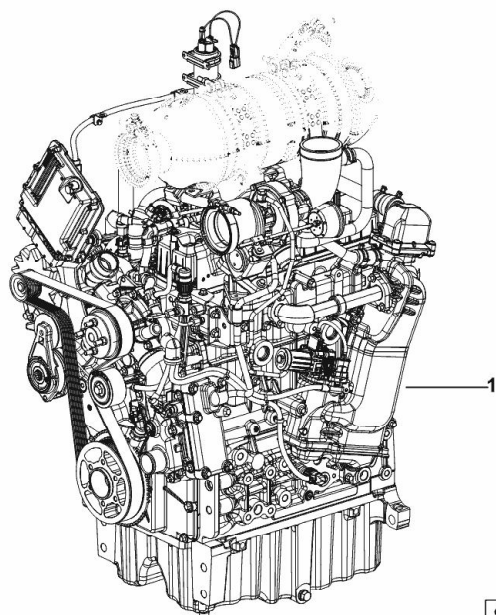
ENGINE TCD3.6L4 - 88kW EPA4i

| Fig. | P/n | QTY | Name |
|------|-----|-----|------|
|------|-----|-----|------|

Notes:

- EXPORT U.S.A. [5130]

| | | | |
|---|----------|---|---|
| 1 | 25010594 | 1 | engine ON ORDERING PLEASE ENGINE NO. REQUIRED |
|---|----------|---|---|



9_K9919_02_0-A-001

5130

Section: B0 - ENGINE

Ref: B0.00.8 (1)

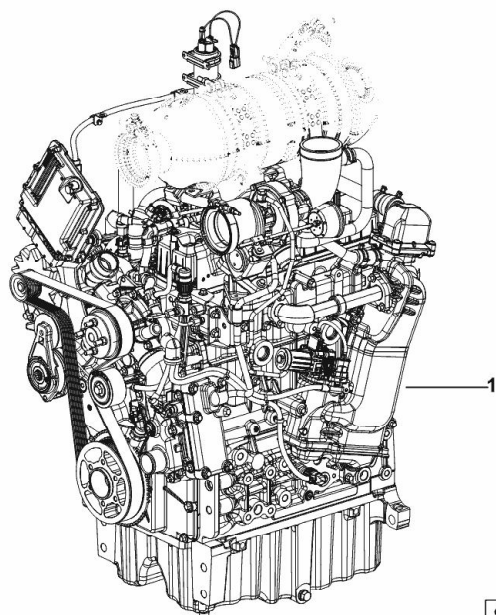
ENGINE TCD3.6L4 - 88kW2200E4i

| Fig. | P/n | QTY | Name |
|------|-----|-----|------|
|------|-----|-----|------|

Notes:

[5130]

| | | | |
|---|----------|---|---|
| 1 | 25010587 | 1 | engine ON ORDERING PLEASE ENGINE NO. REQUIRED |
|---|----------|---|---|



9_K9919_01_0-A-001

5130

Section: B0 - ENGINE

Ref: B0.01.0 (2)

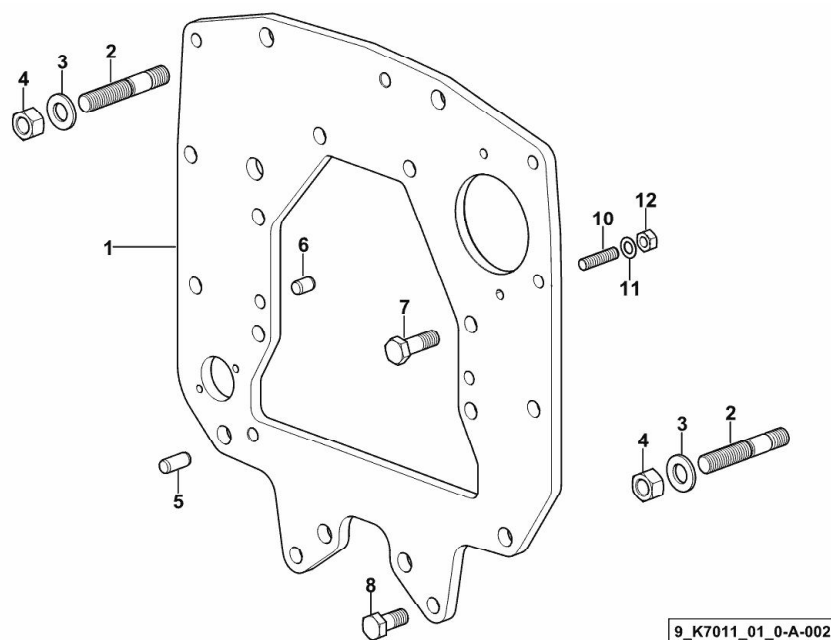
MONOBLOC ENGINE-GEARBOX CONNECTING FLANGE

| Fig. | P/n | QTY | Name |
|------|-----|-----|------|
|------|-----|-----|------|

Notes:

[5130]

| | | | |
|----|-----------------|---|-------------------------------------|
| 1 | 0.019.1507.0/30 | 1 | flange |
| 2 | 2.0439.327.7 | 4 | stud bolt m 16 p.1.5 x 75 |
| 3 | 2.1475.006.2 | 4 | spring washer 16 |
| 4 | 2.1012.409.7 | 4 | nut m 16 |
| 5 | 2.1651.912.0 | 2 | cylindrical plug 12x28 |
| 6 | 2.1651.908.0 | 2 | cylindrical plug 12x18 |
| 7 | 2.0113.515.2 | 6 | screw m 14 p.2 x 40 |
| 8 | 2.0113.511.2 | 2 | screw m 14 x 30 - 10.9 |
| 10 | 2.0432.155.7 | 2 | stud bolt m 10 p.1.5 / p. 1.25 x 25 |
| 11 | 2.1470.006.2 | 2 | lock washer 10 |
| 12 | 2.1011.421.2 | 2 | nut m 10 p.1.25 |



SERIE GUARNIZIONI

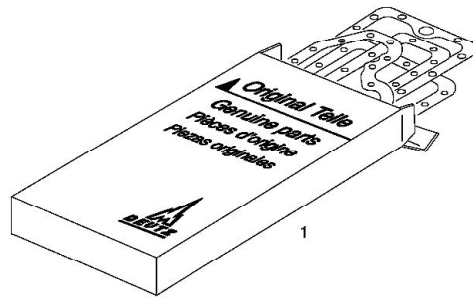
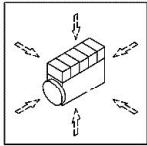
| Fig. | P/n | QTY | Name |
|------|-----|-----|------|
|------|-----|-----|------|

Notes:

[5130]

Engine serial number:

11464513 11479613 11479614 11480891 11480892 11485857 11485867 11485870 11485871 11487325 11487326
 11487327 11487328 11487329 11487330 11487331 11487332 11487333 11487334 11494561 11494562 11494563
 11494564 11494565 11494566 11494567 11494568 11494569 11494570 11499416 11499417 11499418 11499419
 11499420 11510561 11510562 11510563 11510564 11510565 11551342 11551373 11551374 11551375 11551376
 11551377 11551378 11551379 11551380 11551381 11551382 11551383 11551384 11551385 11551386 11551387
 11551388 11551389 11551390 11551391 11551392 11551393 11551394 11551395 11551396 11551397 11551398
 11551399 11551400 11551401 11551402 11551403 11551404 11551405 11551406 11551407 11551408 11551409
 11551410 11551411 11551412 11551413 11551414 11551415 11551416 11551417 11551418 11551419 11551420
 11551421 11551422 11552405 11552406 11552407 11552408 11552409 11552410 11559951 11559952 11559953
 11559954 11563248 11563249 11563250 11571729 11571730 11571783 11571784 11571785 11571786 11571787
 11571788 11571789 11571790 11571791 11571792 11573412 11573413 11573414 11573415 11573811 11573812
 11573813 11573814 11575869



| | | | |
|---|----------|---|------------|
| 1 | 02937754 | 1 | gasket set |
|---|----------|---|------------|

BLEEDING TUBE

| Fig. | P/n | QTY | Name |
|------|-----|-----|------|
|------|-----|-----|------|

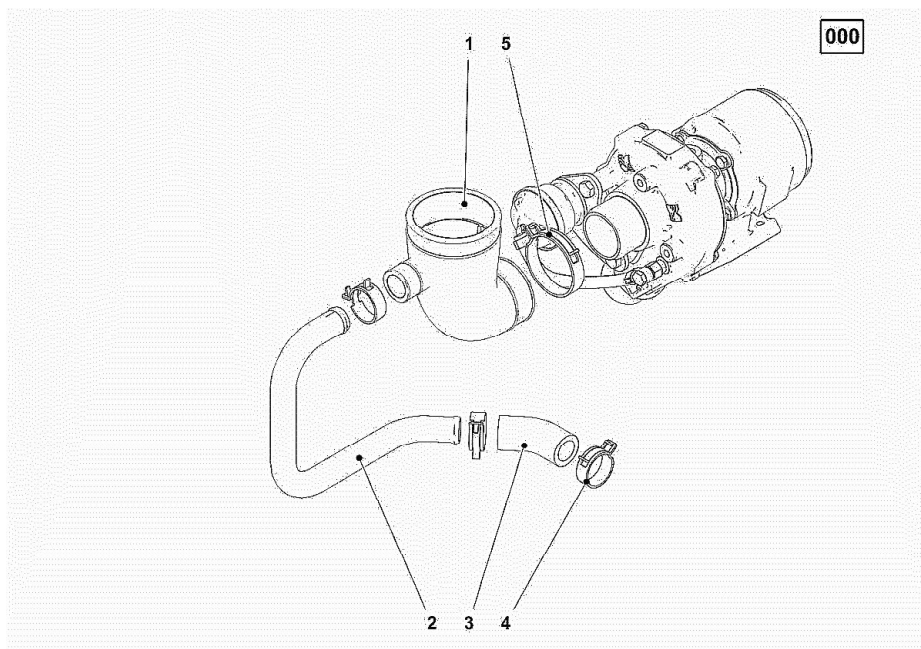
Notes:

[5130]

Engine serial number:

11464513

| | | | |
|---|----------|---|----------------------------|
| 1 | 04125216 | 1 | tube |
| 2 | 04125217 | 1 | tube |
| 3 | 04124531 | 1 | tube |
| 4 | 01149048 | 3 | clamp DIN 3021 -A-30X12 |
| 5 | 01149067 | 1 | clamp DIN 3021 -A-60X12 |



BLEEDING TUBE

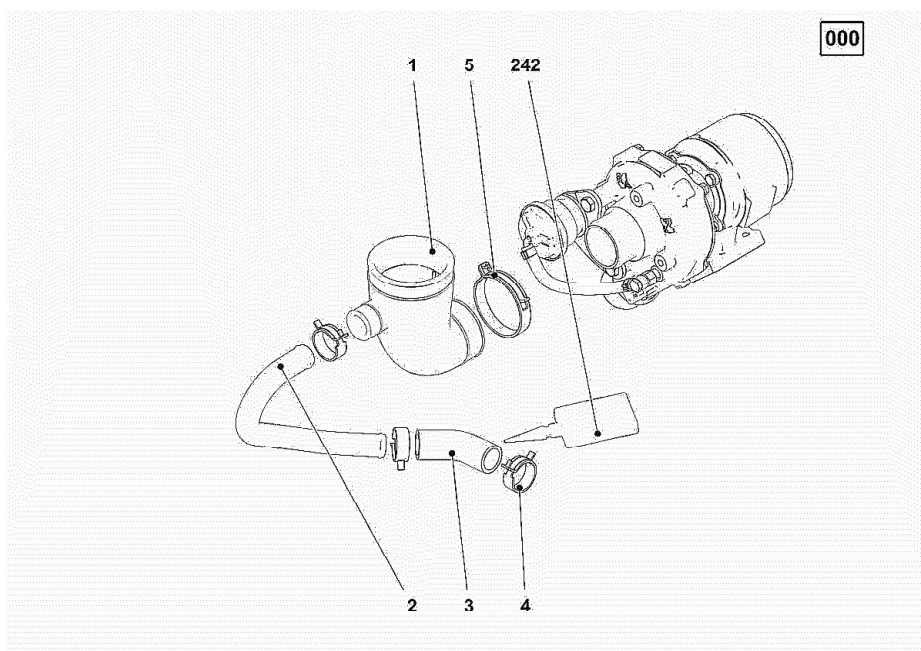
| Fig. | P/n | QTY | Name |
|------|-----|-----|------|
|------|-----|-----|------|

Notes:

[5130]

Engine serial number:

11479613 11479614 11480891 11480892 11485857 11485867 11485870 11485871 11487325 11487326 11487327
 11487328 11487329 11487330 11487331 11487332 11487333 11487334 11494561 11494562 11494563 11494564
 11494565 11494566 11494567 11494568 11494569 11494570 11499416 11499417 11499418 11499419 11499420
 11510561 11510562 11510563 11510564 11510565 11551342 11551373 11551374 11551375 11551376 11551377
 11551378 11551379 11551380 11551381 11551382 11551383 11551384 11551385 11551386 11551387 11551388
 11551389 11551390 11551391 11551392 11551393 11551394 11551395 11551396 11551397 11551398 11551399
 11551400 11551401 11551402 11551403 11551404 11551405 11551406 11551407 11551408 11551409 11551410
 11551411 11551412 11551413 11551414 11551415 11551416 11551417 11551418 11551419 11551420 11551421
 11551422 11552405 11552406 11552407 11552408 11552409 11552410 11559951 11559952 11559953 11559954
 11563248 11563249 11563250 11571729 11571730 11571783 11571784 11571785 11571786 11571787 11571788
 11571789 11571790 11571791 11571792 11573412 11573413 11573414 11573415 11573811 11573812 11573813
 11573814 11575869



| | | | |
|-----|----------|---|-------------------|
| 1 | 04125216 | 1 | tube |
| 2 | 04126341 | 1 | tube |
| 3 | 04266993 | 1 | tube |
| 4 | 01149048 | 3 | clamp |
| | | | DIN 3021 -A-30X12 |
| 5 | 01149067 | 2 | clamp |
| | | | DIN 3021 -A-60X12 |
| 242 | 01016105 | 1 | sealing compound |