



PARTS MANUAL

6060 COMBINE - 14500

PRINTED BY :
heavy-equipmentmanual.com

6060 ->14500

B0 - ENGINE

GENERAL

DEUTZ ENGINE 183 kW / 250 CV.....	B0.00.0 (1)
PARTS SET - ENGINE MOUNTING.....	B0.00.4 (1)

CYLINDER BLOCK

FASTENINGS.....	B0.01.0
SERIE GUARNIZIONI.....	B0.01.5
FASTENINGS.....	B0.01.7
CRANKCASE BREATHER.....	B0.01.10
KURBELGEHAEUSE.....	B0.01.11
CRANKCASE.....	B0.01.12
DIPSTICK.....	B0.01.16
ACCESSORIES.....	B0.01.17
OIL MEASURING DEVICE.....	B0.01.18
OIL MEASURING DEVICE.....	B0.01.20
ACCESSORIES.....	B0.01.22
PLUG.....	B0.01.23
OIL MEASURING DEVICE.....	B0.01.24
PISTON COOL.NOZZLE.....	B0.01.26
OIL FILLER NECK.....	B0.01.31
FLANGE.....	B0.01.37
CLOSING COMPONENTS.....	B0.01.40
FLANGE.....	B0.01.46

CRANKSHAFT

FASTENINGS.....	B0.02.1
V-GROOVED PULLEY.....	B0.02.2
CRANKSHAFT.....	B0.02.3
PLUG.....	B0.02.6
FLYWHEEL.....	B0.02.7
MAIN BEARINGS.....	B0.02.11
CRANKSHAFT.....	B0.02.12

CYLINDERS - PISTONS - CONNECTING RODS

PISTON.....	B0.03.2
PISTON.....	B0.03.3
CONNECTING ROD.....	B0.03.6

TIMING

FASTENINGS.....	B0.04.3
COVER PLATE.....	B0.04.4
FASTENINGS.....	B0.04.6
CLOSING COMPONENTS.....	B0.04.9
FASTENINGS.....	B0.04.10
CAMSHAFT.....	B0.04.16

BUSH.....	B0.04.18
CAMSHAFT.....	B0.04.19
FASTENINGS.....	B0.04.21
BUSH.....	B0.04.24
PLUG.....	B0.04.25
BUMPER.....	B0.04.27
COVER PLATE.....	B0.04.29
COVER PLATE.....	B0.04.30
COVER PLATE.....	B0.04.32
GEARCASE.....	B0.04.33
GEARCASE.....	B0.04.34
GEARCASE.....	B0.04.35
CYLINDER HEAD	
FASTENINGS.....	B0.05.1
FASTENINGS.....	B0.05.2
MOTORAUFHAENGUNG.....	B0.05.3
CLOSING COMPONENTS.....	B0.05.7
CYLINDER HEAD.....	B0.05.10
CYLINDER HEAD.....	B0.05.11
ROCKER ARMS COVER.....	B0.05.12
LUBRICATION	
FASTENINGS.....	B0.06.1
FASTENINGS.....	B0.06.2
BLANKING PARTS.....	B0.06.5
FASTENINGS.....	B0.06.7
SEALING.....	B0.06.8
LUBRIC. OIL COOLER.....	B0.06.9
OIL SUCTION PIPE.....	B0.06.12
LUBRIC. OIL COOLER.....	B0.06.13
CLOSING COMPONENTS.....	B0.06.14
HYDRAULIC PUMP DRIVE.....	B0.06.15
CLOSING COMPONENTS.....	B0.06.16
OIL PAN.....	B0.06.18
OELKUEHLERGEHAEUSE.....	B0.06.19
SPIN-ON FILTER.....	B0.06.25
SPIN-ON FILTER.....	B0.06.26
FUEL INJECTION SYSTEM	
FASTENINGS.....	B0.07.3
FASTENINGS.....	B0.07.5
FUEL LINE.....	B0.07.8
FUEL LINE.....	B0.07.9
FUEL LINE.....	B0.07.11
ADD-ON PARTS ENGINE.....	B0.07.12
FUEL FILTER.....	B0.07.13

FUEL LINE.....	B0.07.14
ENGINE INJECTION VALVE.....	B0.07.15
FUEL FEED PUMP.....	B0.07.16
FUEL LINE.....	B0.07.20
FUEL LINE.....	B0.07.21
FUEL FEED PUMP.....	B0.07.24
ADD-ON PARTS ENGINE.....	B0.07.26
CLOSING COMPONENTS.....	B0.07.27
FUEL LINE.....	B0.07.28
CLOSING COMPONENTS.....	B0.07.29
FUEL PUMP.....	B0.07.30
ROLLER TAPPET.....	B0.07.31
DISTRIBUTOR.....	B0.07.32
ENGINE FUEL PUMP.....	B0.07.33
FUEL PUMP.....	B0.07.36
COMMON RAIL.....	B0.07.39
ROLLER TAPPET.....	B0.07.40
DISTRIBUTOR.....	B0.07.41
CLOSING COMPONENTS.....	B0.07.42
ENGINE FUEL PUMP.....	B0.07.43
MECHANICAL - ELECTRONIC GOVERNOR	
ELECTRONIC CONTROL UNIT - ENGINE.....	B0.08.1
CLOSING COMPONENTS.....	B0.08.2
COOLING	
FASTENINGS.....	B0.09.1
FASTENINGS.....	B0.09.2
FAN SUPPORT.....	B0.09.3
V-BELT.....	B0.09.5
V-BELT.....	B0.09.8
COOLING WATER PUMP.....	B0.09.9
COOLING WATER PUMP.....	B0.09.10
HOSE CONNECTION.....	B0.09.13
THERMOSTAT.....	B0.09.14
COOLANT PIPE.....	B0.09.15
COOLANT PIPE.....	B0.09.16
HEATER CONNECTION.....	B0.09.17
RIEMENSPANNER.....	B0.09.19
COOLING WATER PUMP.....	B0.09.20
CONNECTION.....	B0.09.22
INTAKE - EXHAUST MANIFOLDS	
EXHAUST PIPE.....	B0.10.1
CLOSING COMPONENTS.....	B0.10.3
ACCESSORIES.....	B0.10.4
PIPING.....	B0.10.6

TURBOCHARGER

TURBOCHARGER.....	B0.11.1
OIL LUBRICATION PIPE.....	B0.11.3

Electrical accessories

FASTENINGS.....	B0.12.21000
PLUG-IN CONNECTOR.....	B0.12.21000
STARTER.....	B0.12.21000
ACCESSORIES.....	B0.12.21000
OIL PRESSUR.SWITCH.....	B0.12.21000
FASTENINGS.....	B0.12.21000
GENERATOR.....	B0.12.21000
FASTENINGS.....	B0.12.21000
IMPULSE TRANSMITTER.....	B0.12.21000
ACCESSORIES.....	B0.12.21000
PLUG-IN CONNECTOR.....	B0.12.21000
TEMPER. TRANSMITTER.....	B0.12.21000
FASTENINGS.....	B0.12.21000
ELECTRICAL LEAD.....	B0.12.21000
ACCESSORIES.....	B0.12.21000
DRIVING PARTS.....	B0.12.21000
ENGINE ELECTRICAL SYSTEM.....	B0.12.21000
FASTENINGS.....	B0.12.21000
ENGINE ELECTRICAL SYSTEM.....	B0.12.21000
FASTENINGS.....	B0.12.21000
FASTENINGS.....	B0.12.21000
FASTENINGS.....	B0.12.21000
ELECTRICAL LEAD.....	B0.12.21000
COVER PLATE.....	B0.12.21000
STARTER.....	B0.12.21000
OIL PRESSUR.SWITCH.....	B0.12.21000
GENERATOR.....	B0.12.21000
ENGINE ELECTRICAL SYSTEM.....	B0.12.21000
FASTENINGS.....	B0.12.21000
GENERATOR.....	B0.12.21000
STARTER.....	B0.12.21000
GENERATOR.....	B0.12.21000
FASTENINGS.....	B0.12.21000

6060 ->14500

Section: B0 - ENGINE

Ref: B0.00.0 (1)

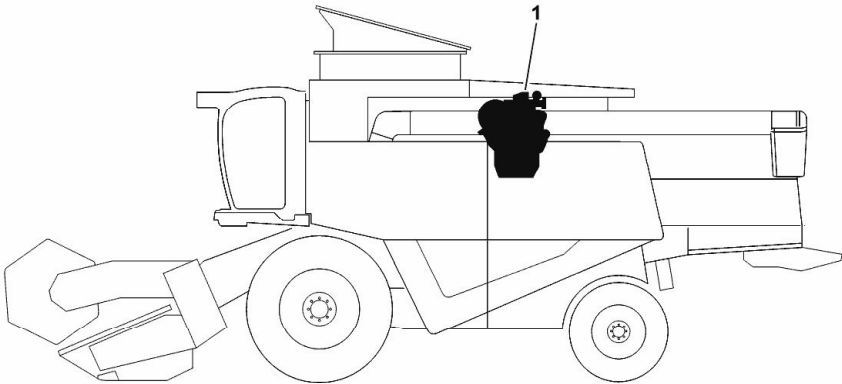
DEUTZ ENGINE 183 kW / 250 CV

Fig.	P/n	QTY	Name
------	-----	-----	------

Notes:

[6060 ->14500]

1	25007810	1	engine TCD 2012 L06-4V ON ORDERING PLEASE ENGINE NO. REQUIRED
---	----------	---	---



H9_Z75A0_00_0-A-001

6060 ->14500

Section: B0 - ENGINE

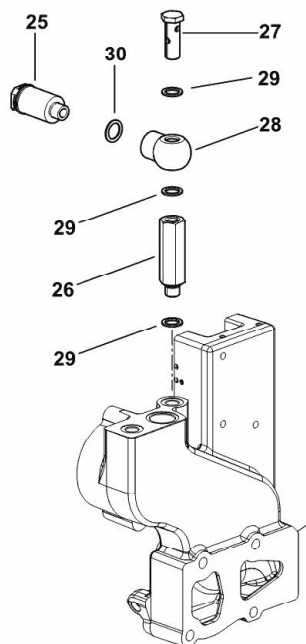
Ref: B0.00.4 (1)

PARTS SET - ENGINE MOUNTING

Fig.	P/n	QTY	Name
------	-----	-----	------

Notes:

[6060 ->14500]



H9_Z75A0_01_0-D-001



25	16064285	1	connection
26	2.3249.800.2	1	pipe union m14x1.5
27	2.3249.799.2	1	pipe union m14x1.5
28	2.3249.694.2	1	pipe fitting
29	2.1560.010.0	3	gasket 14.2 x 20
30	2.1560.012.0	1	gasket 16.2 x 22

6060 ->14500

Section: B0 - ENGINE

Ref: B0.01.0

FASTENINGS

Fig.	P/n	QTY	Name
------	-----	-----	------

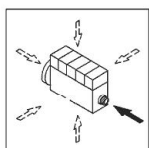
Notes:

[6060 ->14500]

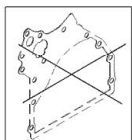
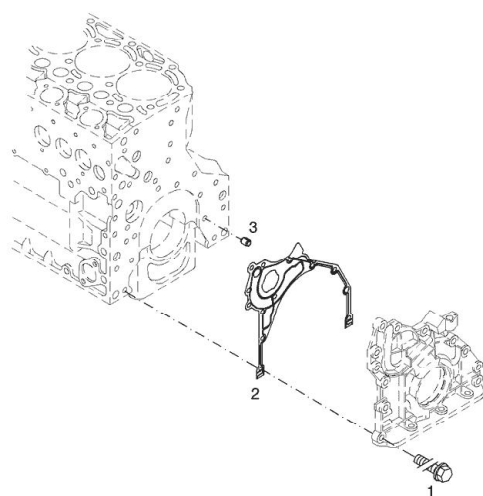
Engine serial number:

10828276 10863524 10906910 10906911 10906913 10906915 10980633 11009026 11009028 11009036 11009040
11009048

1	01183645	12	screw EN 1662 -F-M8X35-10.9-ZNAL-A
2	04504325	1	gasket
3	01181406	1	bushing H 2341 -B11X8-FE/ZN12C*



003 ©



6060 ->14500

Section: B0 - ENGINE

Ref: B0.01.5

SERIE GUARNIZIONI

Fig.	P/n	QTY	Name
------	-----	-----	------

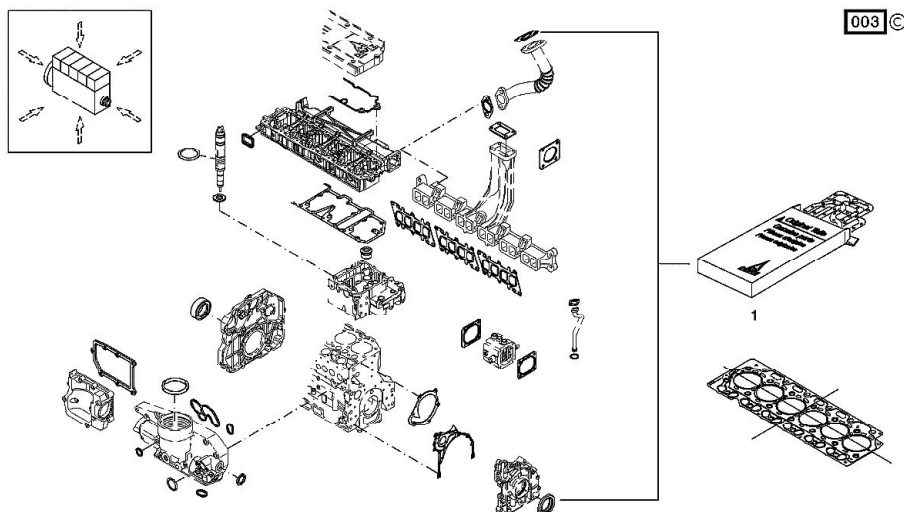
Notes:

[6060 ->14500]

Engine serial number:

10828276 10863524 10906910 10906911 10906913 10906915 10980633 11009026 11009028 11009036 11009040
11009048

1	02937590	1	gasket set THE KIT DOES NOT CONTAIN ALL THE GASKETS: SEE SM 0199-99-9449
---	----------	---	--



FASTENINGS

Fig.	P/n	QTY	Name
------	-----	-----	------

Notes:
[6060 ->14500]

Engine serial number:
10828276 10863524 10906910 10906911 10906913 10906915 10980633 11009026 11009028 11009036 11009040
11009048

1	01181438	1	screw 30 Nm EN 1662 -F-M8X55-10.9-ZNAL-A
2	01181437	3	screw 20 Nm EN 1662 -F-M8X45-10.9-ZNAL-A

