



# **PARTS MANUAL**

**6065 HTS**

**COMBINE - 14500**

PRINTED BY :  
[heavy-equipmentmanual.com](http://heavy-equipmentmanual.com)

6065 HTS ->14500

B0 - ENGINE

GENERAL

DEUTZ ENGINE 228 kW / 310 CV.....	B0.00.1 (1)
PARTS SET - ENGINE MOUNTING.....	B0.00.3 (1)
PARTS SET - ENGINE MOUNTING.....	B0.00.3 (2)
PARTS SET - ENGINE MOUNTING.....	B0.00.3 (3)

CYLINDER BLOCK

FASTENINGS.....	B0.01.2
SERIE GUARNIZIONI.....	B0.01.3
SERIE GUARNIZIONI.....	B0.01.4
SERIE GUARNIZIONI.....	B0.01.8
BLEEDING TUBE.....	B0.01.9
BLEEDING TUBE.....	B0.01.11
CRANKCASE BREATHER.....	B0.01.14
CRANKCASE BREATHER.....	B0.01.15
FRONT COVER.....	B0.01.18
FRONT COVER.....	B0.01.21
CRANKCASE.....	B0.01.23
CRANKCASE.....	B0.01.27
COOL.SYST.PROTECT.....	B0.01.30
MAIN BEARINGS.....	B0.01.34
DIPSTICK.....	B0.01.35
BLANKING PARTS.....	B0.01.36
FRONT COVER.....	B0.01.36
OIL MEASURING DEVICE.....	B0.01.38
CLOSING COMPONENTS.....	B0.01.42
CLOSING COMPONENTS.....	B0.01.44
ACCESSORIES.....	B0.01.45
DIPSTICK.....	B0.01.47

CRANKSHAFT

FASTENINGS.....	B0.02.0
FASTENINGS.....	B0.02.4
V-GROOVED PULLEY.....	B0.02.5
PLUG.....	B0.02.6
CRANKSHAFT.....	B0.02.8
CRANKSHAFT.....	B0.02.9
V-GROOVED PULLEY.....	B0.02.10
FLYWHEEL.....	B0.02.13
FLYWHEEL.....	B0.02.14

CYLINDERS - PISTONS - CONNECTING RODS

MAIN BEARINGS.....	B0.03.0
PISTON.....	B0.03.1

PISTON.....	B0.03.4
CONNECTING ROD.....	B0.03.5
<b>TIMING</b>	
ROCKER ARM BRACKET.....	B0.04.0
CAMSHAFT.....	B0.04.1
FASTENINGS.....	B0.04.5
CAMSHAFT.....	B0.04.7
ROCKER ARM BRACKET.....	B0.04.8
ROCKER ARM BRACKET.....	B0.04.11
ROCKER ARM BRACKET.....	B0.04.12
CAMSHAFT.....	B0.04.13
CAMSHAFT.....	B0.04.14
FASTENINGS.....	B0.04.15
ROCKER ARM BRACKET.....	B0.04.17
ROCKER ARM BRACKET.....	B0.04.20
SEALING.....	B0.04.22
SEALING.....	B0.04.23
GEARCASE.....	B0.04.26
GEARCASE.....	B0.04.28
VENTILANTRIEB.....	B0.04.31
<b>CYLINDER HEAD</b>	
FASTENINGS.....	B0.05.0
ENGINE MOUNTING.....	B0.05.4
CYLINDER HEAD.....	B0.05.5
ENGINE MOUNTING.....	B0.05.6
VENTILANTR.HAUBE.....	B0.05.8
VALVE MECHAN.COVER.....	B0.05.12
FILLER CAP.....	B0.05.13
<b>LUBRICATION</b>	
FASTENINGS.....	B0.06.0
FASTENINGS.....	B0.06.3
FASTENINGS.....	B0.06.4
BLANKING PARTS.....	B0.06.5
CLOSING COMPONENTS.....	B0.06.6
SEALING.....	B0.06.8
OIL SUCTION PIPE.....	B0.06.10
OIL SUCTION PIPE.....	B0.06.11
HYDRAULIC PUMP DRIVE.....	B0.06.15
OIL PAN.....	B0.06.17
CLOSING COMPONENTS.....	B0.06.22
CLOSING COMPONENTS.....	B0.06.23
OIL COOLER BOX.....	B0.06.24
ENGINE COOLING SYSTEM PIPES.....	B0.06.27
<b>FUEL INJECTION SYSTEM</b>	

FUEL LINE.....	B0.07.0
FUEL LINE.....	B0.07.1
FASTENINGS.....	B0.07.2
FASTENINGS.....	B0.07.4
NOZZLE.....	B0.07.6
FUEL LINE.....	B0.07.10
ADD-ON PARTS ENGINE.....	B0.07.12
FUEL FEED PUMP.....	B0.07.16
ENGINE FUEL PUMP.....	B0.07.17
FUEL SUPPLY PUMP.....	B0.07.18
COMMON RAIL.....	B0.07.19
FUEL SUPPLY PUMP.....	B0.07.22
FUEL FEED PUMP.....	B0.07.23
FUEL FEED PUMP.....	B0.07.24
FUEL FILTER.....	B0.07.25
ADD-ON PARTS ENGINE.....	B0.07.26
DISTRIBUTOR.....	B0.07.32
FUEL SUPPLY PUMP.....	B0.07.34
DISTRIBUTOR.....	B0.07.37
FUEL SUPPLY PUMP.....	B0.07.38
DISTRIBUTOR.....	B0.07.41
<b>MECHANICAL - ELECTRONIC GOVERNOR</b>	
ELECTRONIC CONTROL UNIT - ENGINE.....	B0.08.0
ELECTRONIC CONTROL UNIT - ENGINE.....	B0.08.1
<b>COOLING</b>	
FASTENINGS.....	B0.09.0
COOLING WATER PUMP.....	B0.09.4
BELT STRETCHER.....	B0.09.6
COOLANT PIPE.....	B0.09.7
V-BELT.....	B0.09.11
THERMOSTAT.....	B0.09.12
BELT STRETCHER.....	B0.09.18
RIEMENSPANNER.....	B0.09.21
V-BELT.....	B0.09.23
<b>INTAKE - EXHAUST MANIFOLDS</b>	
EXHAUST PIPE.....	B0.10.0
EXHAUST PIPE.....	B0.10.2
ADD-ON PARTS ENGINE.....	B0.10.5
PIPING.....	B0.10.7
RADIATOR.....	B0.10.8
RADIATOR.....	B0.10.9
RADIATOR.....	B0.10.10
CONNECTING PIPE.....	B0.10.11
AGR-MODUL.....	B0.10.12

**TURBOCHARGER**

TURBOCHARGER.....	B0.11.2
RETURN LINE.....	B0.11.4
RETURN LINE.....	B0.11.5
OIL LUBRICATION PIPE.....	B0.11.6
OIL LUBRICATION PIPE.....	B0.11.7

**Electrical accessories**

FASTENINGS.....	B0.12.21000
PLUG-IN CONNECTOR.....	B0.12.21000
COOLING AIR BAFFLE.....	B0.12.21000
ACCESSORIES.....	B0.12.21000
ACCESSORIES.....	B0.12.21000
ACCESSORIES.....	B0.12.21000
ACCESSORIES.....	B0.12.21000
GENERATOR.....	B0.12.21000
ELECTRICAL SYSTEM.....	B0.12.21000
ENGINE ELECTRICAL SYSTEM.....	B0.12.21000
STARTER.....	B0.12.21000
ELECTRICAL LEAD.....	B0.12.21000
ACCESSORIES.....	B0.12.21000
FASTENINGS.....	B0.12.21000
FASTENINGS.....	B0.12.21000
FASTENINGS.....	B0.12.21000
ENGINE ELECTRICAL SYSTEM.....	B0.12.21000
FASTENINGS.....	B0.12.21000
ELECTRICAL LEAD.....	B0.12.21000
ACCESSORIES.....	B0.12.21000
COVER PLATE.....	B0.12.21000
STARTER.....	B0.12.21000
KABELBAUM.....	B0.12.21000
STARTER.....	B0.12.21000
ACCESSORIES.....	B0.12.21000
FASTENINGS.....	B0.12.21000

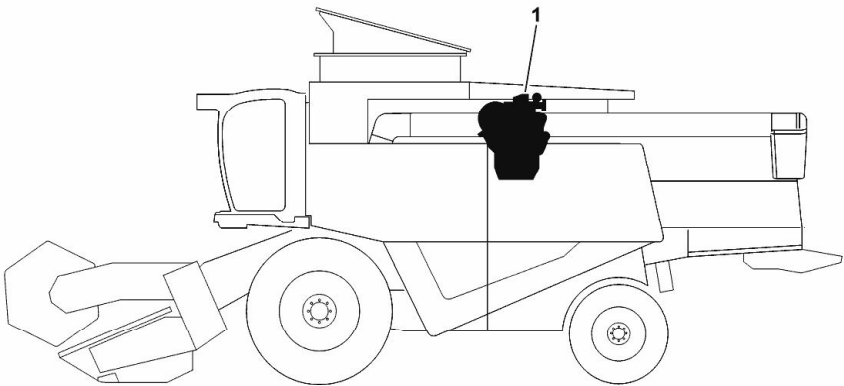
DEUTZ ENGINE 228 kW / 310 CV

Fig.	P/n	QTY	Name
------	-----	-----	------

Notes:

[6065 HTS ->14500]

1	25007609	1	engine TCD 2013 L06-4V ON ORDERING PLEASE ENGINE NO. REQUIRED
---	----------	---	---



H9\_Z78A0\_00\_0-A-001

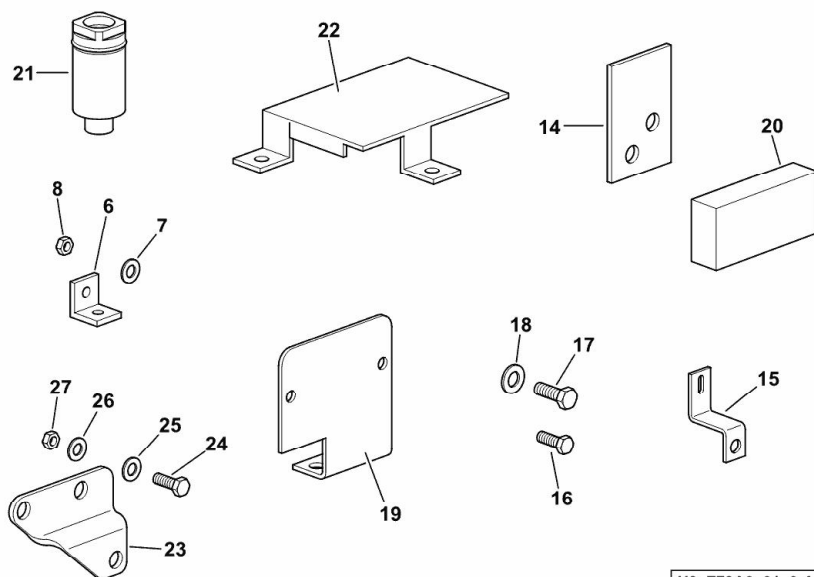
**PARTS SET - ENGINE MOUNTING**

Fig.	P/n	QTY	Name
------	-----	-----	------

**Notes:**

[6065 HTS -&gt;14500] 14611 &lt;-

6	16006188/10	1	support
7	01102797	2	washer 6, d128
8	01112813	2	nut m 6
14	16061552	4	plate
15	16062441	1	square
16	01112264	1	screw m 6 x 20, d933
17	01112299	1	screw m 8 x 12, d933
18	01102799	1	washer 8, d128
19	16062978	1	guard
20	0.015.8833.0	1	shim 30 x 50 x 15
21	16064238	1	vent
22	16064187	1	small guard
23	0.017.5544.0	1	bracket
24	2.0114.207.2	2	screw m 8 p.1.25 x 20
25	2.1474.009.2	1	spring washer 8
26	2.1310.004.2	2	flat washer 8.4x17
27	2.1120.005.2	1	nut m 8 p.1.25



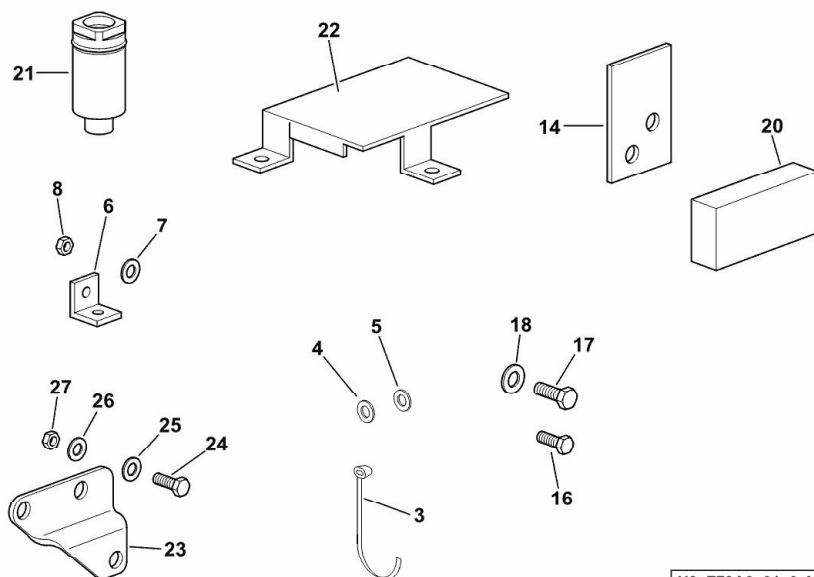
H9\_Z79A0\_01\_0-A-001

**PARTS SET - ENGINE MOUNTING**

Fig.	P/n	QTY	Name
------	-----	-----	------

**Notes:**

[6065 HTS -&gt;14500] -&gt; 14797 - 14884 &lt;-



H9\_Z79A0\_01\_0-A-002

3	06216480	6	clamp 4,8 x 360
4	06214189	4	washer 6.4
5	01102797	2	washer 6, d128
6	16006188/10	1	support
7	01102797	2	washer 6, d128
8	01112813	2	nut m 6
14	16061552	4	plate
16	01112264	1	screw m 6 x 20, d933
17	01112299	1	screw m 8 x 12, d933
18	01102799	1	washer 8, d128
20	0.015.8833.0	1	shim 30 x 50 x 15
21	16064238	1	vent
22	16064187	1	small guard
23	0.017.5544.0	1	bracket
24	2.0114.207.2	2	screw m 8 p.1.25 x 20
25	2.1474.009.2	1	spring washer 8
26	2.1310.004.2	2	flat washer 8.4x17
27	2.1120.005.2	1	nut m 8 p.1.25



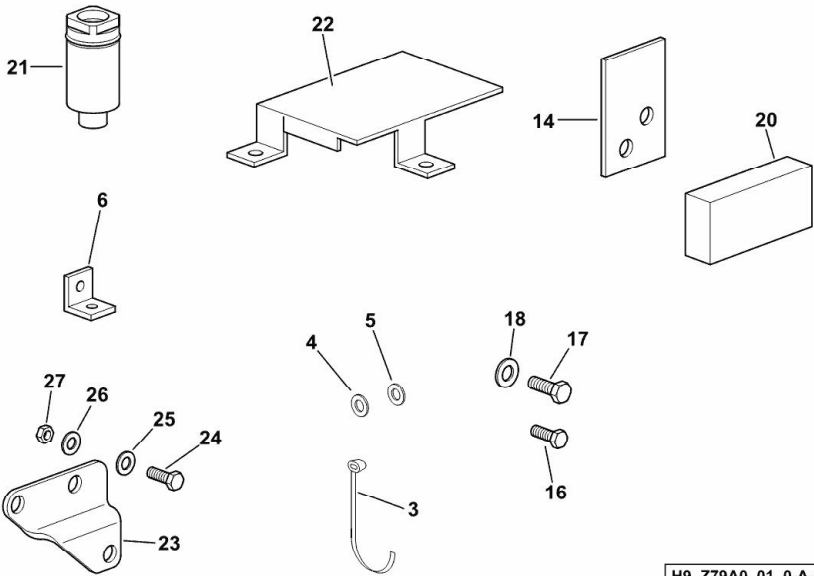
PARTS SET - ENGINE MOUNTING

Fig.	P/n	QTY	Name
------	-----	-----	------

Notes:

[6065 HTS ->14500]

3	06216480	6	clamp 4,8 x 360
4	06214189	4	washer 6.4
5	01102797	2	washer 6, d128
6	16006188/10	1	support
14	16061552	4	plate
16	01112264	1	screw m 6 x 20, d933
17	01112299	1	screw m 8 x 12, d933
18	01102799	1	washer 8, d128
20	0.015.8833.0	1	shim 30 x 50 x 15
21	16064238	1	vent
22	16064187	1	small guard
23	0.017.5544.0	1	bracket
24	2.0114.207.2	2	screw m 8 p.1.25 x 20
25	2.1474.009.2	1	spring washer 8
26	2.1310.004.2	2	flat washer 8.4x17
27	2.1120.005.2	1	nut m 8 p.1.25



H9\_Z79A0\_01\_0-A-003

FASTENINGS

Fig.	P/n	QTY	Name
------	-----	-----	------

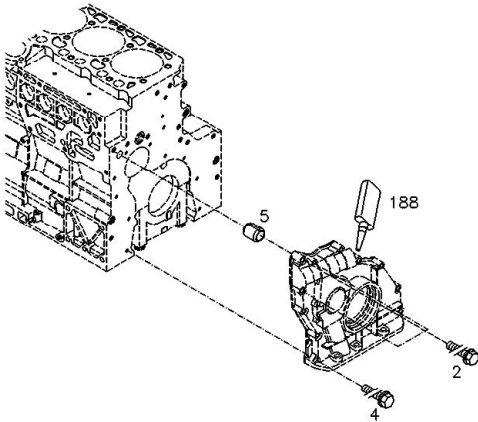
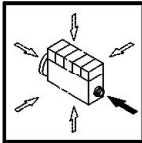
Notes:

[6065 HTS ->14500]

Engine serial number:

10765285 10782166 10786835 10953566 10953734 10955133 10973423 10973444 10976221

2	01180114	3	screw EN 1662 -F-M8X70-10.9-GESCHW
4	01143362	8	screw EN 1662 -F-M8X35-10.9-A4C
5	01181406	1	bushing H 2341 -B11X8-FE/ZN12C*
6	04294952	1	gasket
188	01016122	1	gasket H 0699 -DEUTZDW67-250ML



000 ©