



PARTS MANUAL

**6095 HTS
COMBINE - 14885**

PRINTED BY :
heavy-equipmentmanual.com

6095 HTS ->14885

B0 - ENGINE

GENERAL

DEUTZ ENGINE 259 kW / 366 HP.....	B0.00.2 (1)
PARTS SET - ENGINE MOUNTING.....	B0.00.3 (2)
PARTS SET - ENGINE MOUNTING.....	B0.00.3 (3)

CYLINDER BLOCK

SERIE GUARNIZIONI.....	B0.01.0
FASTENINGS.....	B0.01.1
SERIE GUARNIZIONI.....	B0.01.6
SERIE GUARNIZIONI.....	B0.01.8
BLEEDING TUBE.....	B0.01.9
BLEEDING TUBE.....	B0.01.11
CRANKCASE BREATHER.....	B0.01.14
CRANKCASE BREATHER.....	B0.01.15
FRONT COVER.....	B0.01.19
FRONT COVER.....	B0.01.20
CRANKCASE.....	B0.01.23
CRANKCASE.....	B0.01.27
CRANKCASE.....	B0.01.30
COOL.SYST.PROTECT.....	B0.01.31
DIPSTICK.....	B0.01.34
MAIN BEARINGS.....	B0.01.35
DIPSTICK.....	B0.01.36
BLANKING PARTS.....	B0.01.37
FRONT COVER.....	B0.01.37
OIL MEASURING DEVICE.....	B0.01.39
CLOSING COMPONENTS.....	B0.01.43
CLOSING COMPONENTS.....	B0.01.45
ACCESSORIES.....	B0.01.46
DIPSTICK.....	B0.01.48

CRANKSHAFT

FASTENINGS.....	B0.02.0
FASTENINGS.....	B0.02.4
V-GROOVED PULLEY.....	B0.02.5
PLUG.....	B0.02.6
CRANKSHAFT.....	B0.02.8
CRANKSHAFT.....	B0.02.9
V-GROOVED PULLEY.....	B0.02.10
FLYWHEEL.....	B0.02.13
FLYWHEEL.....	B0.02.14

CYLINDERS - PISTONS - CONNECTING RODS

MAIN BEARINGS.....	B0.03.0
--------------------	---------

PISTON.....	B0.03.1
PISTON.....	B0.03.4
CONNECTING ROD.....	B0.03.5
TIMING	
ROCKER ARM BRACKET.....	B0.04.0
CAMSHAFT.....	B0.04.1
FASTENINGS.....	B0.04.2
FASTENINGS.....	B0.04.5
ROCKER ARM BRACKET.....	B0.04.8
ROCKER ARM BRACKET.....	B0.04.11
ROCKER ARM BRACKET.....	B0.04.12
CAMSHAFT.....	B0.04.13
CAMSHAFT.....	B0.04.14
FASTENINGS.....	B0.04.15
ROCKER ARM BRACKET.....	B0.04.17
ROCKER ARM BRACKET.....	B0.04.20
SEALING.....	B0.04.22
SEALING.....	B0.04.23
GEARCASE.....	B0.04.26
GEARCASE.....	B0.04.28
VENTILANTRIEB.....	B0.04.31
CYLINDER HEAD	
FASTENINGS.....	B0.05.0
ENGINE MOUNTING.....	B0.05.4
CYLINDER HEAD.....	B0.05.5
CYLINDER HEAD.....	B0.05.6
ENGINE MOUNTING.....	B0.05.7
VENTILANTR.HAUBE.....	B0.05.9
VALVE MECHAN.COVER.....	B0.05.13
FILLER CAP.....	B0.05.14
LUBRICATION	
FASTENINGS.....	B0.06.0
FASTENINGS.....	B0.06.3
FASTENINGS.....	B0.06.4
BLANKING PARTS.....	B0.06.5
CLOSING COMPONENTS.....	B0.06.6
SEALING.....	B0.06.8
OIL SUCTION PIPE.....	B0.06.10
OIL SUCTION PIPE.....	B0.06.11
HYDRAULIC PUMP DRIVE.....	B0.06.15
OIL PAN.....	B0.06.17
CLOSING COMPONENTS.....	B0.06.22
CLOSING COMPONENTS.....	B0.06.23
OIL COOLER BOX.....	B0.06.24

ENGINE COOLING SYSTEM PIPES.....	B0.06.27
FUEL INJECTION SYSTEM	
FUEL LINE.....	B0.07.0
FUEL LINE.....	B0.07.1
FASTENINGS.....	B0.07.2
FASTENINGS.....	B0.07.4
NOZZLE.....	B0.07.6
FUEL LINE.....	B0.07.8
FUEL LINE.....	B0.07.9
ADD-ON PARTS ENGINE.....	B0.07.12
FUEL FEED PUMP.....	B0.07.15
ENGINE FUEL PUMP.....	B0.07.17
FUEL SUPPLY PUMP.....	B0.07.18
COMMON RAIL.....	B0.07.19
FUEL SUPPLY PUMP.....	B0.07.22
FUEL FEED PUMP.....	B0.07.23
FUEL FEED PUMP.....	B0.07.24
FUEL FILTER.....	B0.07.25
ADD-ON PARTS ENGINE.....	B0.07.26
DISTRIBUTOR.....	B0.07.32
FUEL SUPPLY PUMP.....	B0.07.34
FUEL SUPPLY PUMP.....	B0.07.35
DISTRIBUTOR.....	B0.07.37
FUEL SUPPLY PUMP.....	B0.07.38
DISTRIBUTOR.....	B0.07.41
MECHANICAL - ELECTRONIC GOVERNOR	
ELECTRONIC CONTROL UNIT - ENGINE.....	B0.08.0
ELECTRONIC CONTROL UNIT - ENGINE.....	B0.08.1
COOLING	
FASTENINGS.....	B0.09.0
FASTENINGS.....	B0.09.1
COOLING WATER PUMP.....	B0.09.5
BELT STRETCHER.....	B0.09.7
COOLANT PIPE.....	B0.09.8
V-BELT.....	B0.09.12
THERMOSTAT.....	B0.09.13
THERMOSTAT.....	B0.09.15
BELT STRETCHER.....	B0.09.20
RIEMENSPANNER.....	B0.09.23
V-BELT.....	B0.09.25
INTAKE - EXHAUST MANIFOLDS	
EXHAUST PIPE.....	B0.10.1
EXHAUST PIPE.....	B0.10.2
ADD-ON PARTS ENGINE.....	B0.10.5

PIPING.....	B0.10.7
RADIATOR.....	B0.10.8
RADIATOR.....	B0.10.9
RADIATOR.....	B0.10.10
CONNECTING PIPE.....	B0.10.11
AGR-MODUL.....	B0.10.12
TURBOCHARGER	
TURBOCHARGER.....	B0.11.0
RETURN LINE.....	B0.11.4
RETURN LINE.....	B0.11.5
OIL LUBRICATION PIPE.....	B0.11.6
OIL LUBRICATION PIPE.....	B0.11.7
Electrical accessories	
FASTENINGS.....	B0.12.21000
PLUG-IN CONNECTOR.....	B0.12.21000
COOLING AIR BAFFLE.....	B0.12.21000
ACCESSORIES.....	B0.12.21000
ACCESSORIES.....	B0.12.21000
ACCESSORIES.....	B0.12.21000
ACCESSORIES.....	B0.12.21000
GENERATOR.....	B0.12.21000
ELECTRICAL SYSTEM.....	B0.12.21000
ENGINE ELECTRICAL SYSTEM.....	B0.12.21000
FASTENINGS.....	B0.12.21000
STARTER.....	B0.12.21000
ENGINE MOUNTING.....	B0.12.21000
ELECTRICAL LEAD.....	B0.12.21000
ACCESSORIES.....	B0.12.21000
FASTENINGS.....	B0.12.21000
FASTENINGS.....	B0.12.21000
FASTENINGS.....	B0.12.21000
ENGINE ELECTRICAL SYSTEM.....	B0.12.21000
FASTENINGS.....	B0.12.21000
ELECTRICAL LEAD.....	B0.12.21000
ACCESSORIES.....	B0.12.21000
COVER PLATE.....	B0.12.21000
STARTER.....	B0.12.21000
KABELBAUM.....	B0.12.21000
STARTER.....	B0.12.21000
ACCESSORIES.....	B0.12.21000
FASTENINGS.....	B0.12.21000

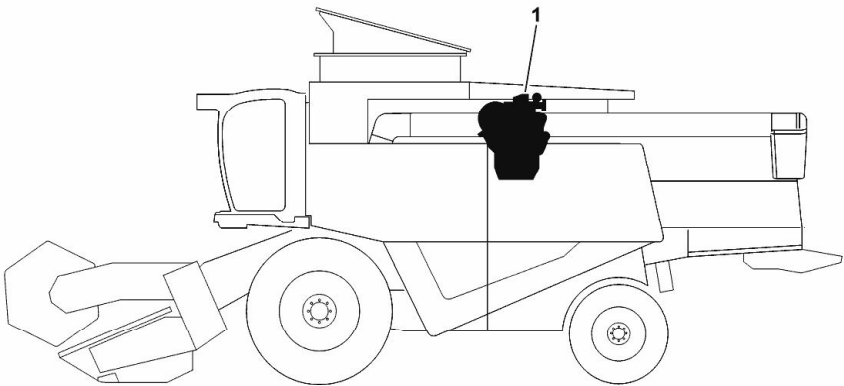
DEUTZ ENGINE 259 kW / 366 HP

Fig.	P/n	QTY	Name
------	-----	-----	------

Notes:

[6095 HTS ->14885]

1	25007610	1	engine TCD 2013 L06-4V ON ORDERING PLEASE ENGINE NO. REQUIRED
---	----------	---	---



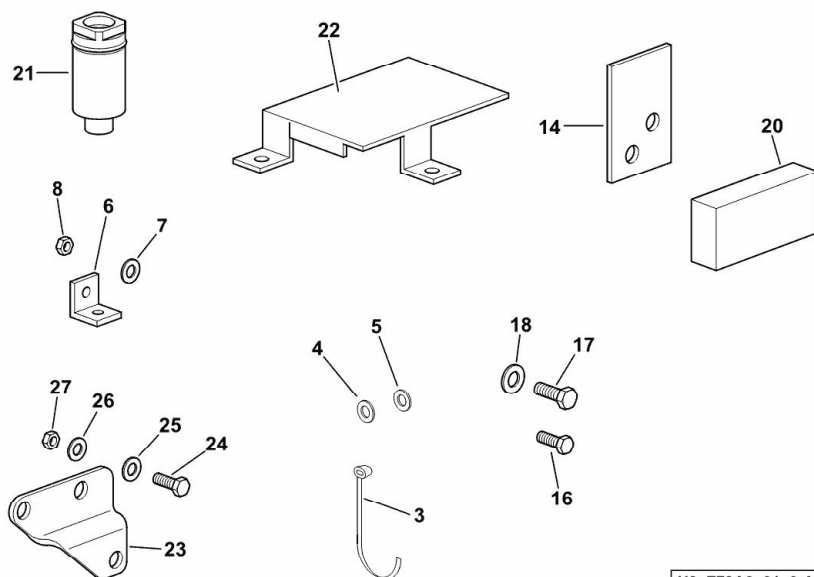
H9_Z79A0_00_0-A-001

PARTS SET - ENGINE MOUNTING

Fig.	P/n	QTY	Name
------	-----	-----	------

Notes:

[6095 HTS ->14885] 15196 <-



H9_Z79A0_01_0-A-002

3	06216480	6	clamp 4,8 x 360
4	06214189	4	washer 6.4
5	01102797	2	washer 6, d128
6	16006188/10	1	support
7	01102797	2	washer 6, d128
8	01112813	2	nut m 6
14	16061552	4	plate
16	01112264	1	screw m 6 x 20, d933
17	01112299	1	screw m 8 x 12, d933
18	01102799	1	washer 8, d128
20	0.015.8833.0	1	shim 30 x 50 x 15
21	16064238	1	vent
22	16064187	1	small guard
23	0.017.5544.0	1	bracket
24	2.0114.207.2	2	screw m 8 p.1.25 x 20
25	2.1474.009.2	1	spring washer 8
26	2.1310.004.2	2	flat washer 8.4x17
27	2.1120.005.2	1	nut m 8 p.1.25

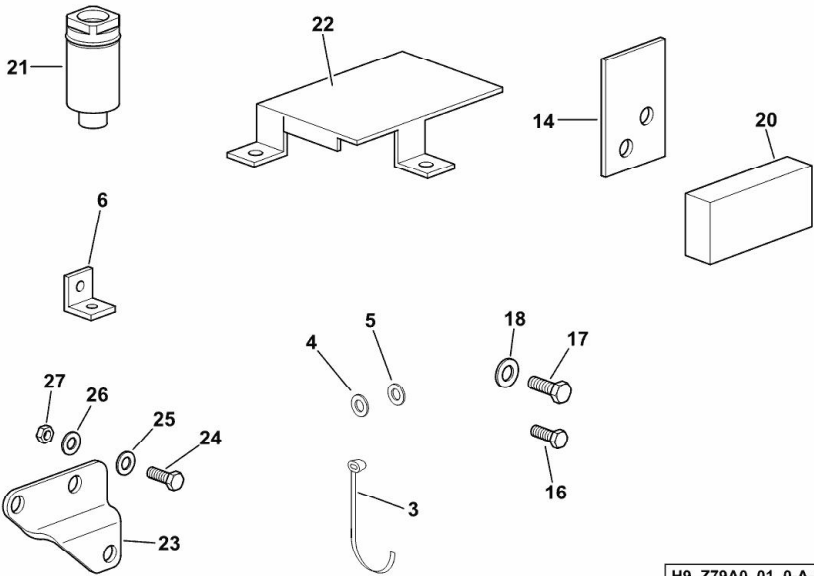
PARTS SET - ENGINE MOUNTING

Fig.	P/n	QTY	Name
------	-----	-----	------

Notes:

[6095 HTS ->14885] -> 15138

3	06216480	6	clamp 4,8 x 360
4	06214189	4	washer 6.4
5	01102797	2	washer 6, d128
6	16006188/10	1	support
14	16061552	4	plate
16	01112264	1	screw m 6 x 20, d933
17	01112299	1	screw m 8 x 12, d933
18	01102799	1	washer 8, d128
20	0.015.8833.0	1	shim 30 x 50 x 15
21	16064238	1	vent
22	16064187	1	small guard
23	0.017.5544.0	1	bracket
24	2.0114.207.2	2	screw m 8 p.1.25 x 20
25	2.1474.009.2	1	spring washer 8
26	2.1310.004.2	2	flat washer 8.4x17
27	2.1120.005.2	1	nut m 8 p.1.25



H9_Z79A0_01_0-A-003

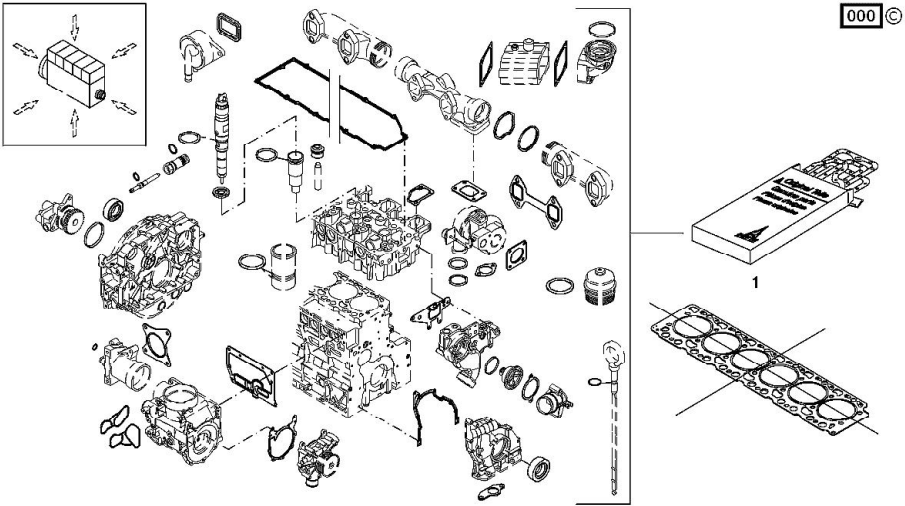
Section: B0 - ENGINE
SERIE GUARNIZIONI

Fig.	P/n	QTY	Name
------	-----	-----	------

Notes:
[6095 HTS ->14885]

Engine serial number:
10348812 10351612 10351613 10351614 10359621 10359622 10359623 10359624 10359625 10359626 10416939
10510986 10577369 10577370 10577371 10577372 10577373 10577374 10577375 10577376 10577377 10577378
10601271 10601272 10601273 10601274 10601275 10601276 10601277 10601278 10601279 10601280 10615138
10615139 10615140 10615141 10615142 10615143 10615144 10615145 10615146 10615147 10615148 10615149
10615150 10615151 10615152 10615153 10620416 10620417 10620418 10620419 10620420 10620421 10620422
10620423 10620424 10620425 10620426 10620427 10620428 10620429 10620430 10620431 10630614 10630615
10630616 10630617 10630618 10630619 10630620 10633217

1	02937644	1	gasket set THE KIT DOES NOT CONTAIN ALL THE GASKETS: SEE SM 0199-99-9449
---	----------	---	--



FASTENINGS

Fig.	P/n	QTY	Name
------	-----	-----	------

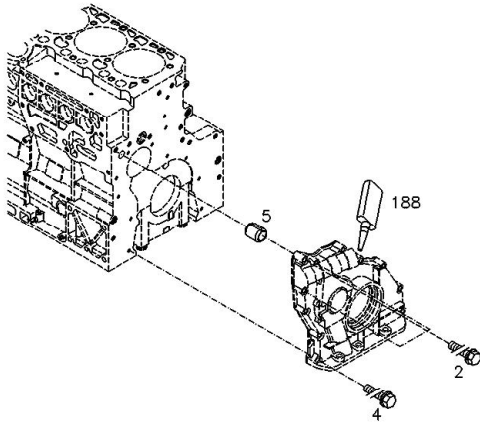
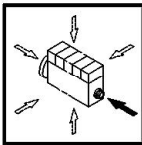
Notes:

[6095 HTS ->14885]

Engine serial number:

10348812 10351612 10351613 10351614 10359621 10359622 10359623 10359624 10359625 10359626 10416939
10510986 10577369 10577370 10577371 10577372 10577373 10577374 10577375 10577376 10577377 10577378
10601271 10601272 10601273 10601274 10601275 10601276 10601277 10601278 10601279 10601280 10615138
10615139 10615140 10615141 10615142 10615143 10615144 10615145 10615146 10615147 10615148 10615149
10615150 10615151 10615152 10615153 10620416 10620417 10620418 10620419 10620420 10620421 10620422
10620423 10620424 10620425 10620426 10620427 10620428 10620429 10620430 10620431 10630614 10630615
10630616 10630617 10630618 10630619 10630620 10633217 10763588 10764861 10764862 10764863 10764864
10768171 10768671 10768672 10768673 10768674 10768675 10768676 10768677 10768678 10768679 10768680
10772356 10772357 10772358 10772359 10772360 10772361 10772362 10772363 10772364 10772365 10772366
10772367 10772368 10772369 10772370 10872044 10874890 10875452 10875453 10875454 10875455 10875456
10875457 10875458 10875459 10875460 10911149 10911150 10911151 10911152 10911153 10960649 10960650
10967476 10967477 10967478 10967479 10967480 10971750 10971751 10971752 10971753 10971754 10973169
10973170 10973171 10973172 10973173 10973402 10973403 10973404 10973405 10973406 10975752 10975753
10975754 10975755 10975756 10975850 10975851 10975852 10975853 10975854 10976290 10976291 10976292
10976293 10976294 11160636 11160637 11169984 11169986 11169987 11173295 11175042 11184419 11184420
11184421 11184422 11184423 11190571 11190572 11190573 11221956 11221957 11225258 11239443 11239444
11239445 11239446 11239447 11239448 11239449 11239450 11244162 11244163 11244164 11244165 11244166
11244167 11244168 11255364 11255365 11255366 11260568 11273238 11273239 11273240 11284151 11293343
11293344 11293345 11293346 11394470 11414963 11414964 11414965 11414966 11414967 11414968 11430395
11430396 11465969

2	01180114	3	screw EN 1662 -F-M8X70-10.9-GESCHW
4	01143362	8	screw EN 1662 -F-M8X35-10.9-A4C
5	01181406	1	bushing H 2341 -B11X8-FE/ZN12C*
6	04294952	1	gasket
188	01016122	1	gasket H 0699 -DEUTZDW67-250ML



000 ©