



PARTS MANUAL

7545 RTS COMBINE

PRINTED BY :
heavy-equipmentmanual.com

7545 RTS

B0 - ENGINE

GENERAL

DEUTZ ENGINE TCD 2015 (330kW/442HP).....B0.00.0 (1)

CYLINDER BLOCK

SUPPORTS.....B0.01.0

FUEHRUNGSROHR.....B0.01.4

TUNNEL COVER.....B0.01.4

SERIE GUARNIZIONI.....B0.01.5

COVER PLATE.....B0.01.7

CRANKCASE.....B0.01.8

ENGINE BEARING.....B0.01.9

DIPSTICK.....B0.01.10

PIN.....B0.01.11

PIN.....B0.01.12

CONNECTING PIPE.....B0.01.13

CLOSING COMPONENTS.....B0.01.14

BREATHER.....B0.01.15

CRANKSHAFT

CRANKSHAFT.....B0.02.0

VIBRATION DAMPER.....B0.02.1

FLYWHEEL.....B0.02.2

THREADED JOINT.....B0.02.3

CYLINDERS - PISTONS - CONNECTING RODS

PISTON.....B0.03.0

CONNECTING ROD.....B0.03.1

TIMING

FASTENINGS.....B0.04.0

TUNNEL COVER.....B0.04.1

ACCESSORIES.....B0.04.2

CAMSHAFT P.T.O.....B0.04.3

MAIN GEARBOX.....B0.04.4

DISTRIBUTOR.....B0.04.5

CYLINDER HEAD

FASTENINGS.....B0.05.0

PLASTIC PROFILE.....B0.05.1

CYLINDER HEAD.....B0.05.2

VALVE MECHAN.COVER.....B0.05.3

VALVE MECHAN.COVER.....B0.05.4

CYLINDER HEAD COVER.....B0.05.5

PTO CLUTCH PIPES.....B0.05.6

LUBRICATION

PRESSURE OIL LINE.....B0.06.0

SUPPORT.....	B0.06.1
OIL RETURN PIPE.....	B0.06.2
OIL PAN.....	B0.06.3
LUBRIC. OIL FILTER.....	B0.06.4
LUBRIC. OIL COOLER.....	B0.06.5
OIL LUBRICATION PIPE.....	B0.06.6
OIL LUBRICATION PIPE.....	B0.06.7
LUBRICAT. OIL PUMP.....	B0.06.8
SEPARATOR.....	B0.06.9
HYDR.PUMPENANBAU.....	B0.06.10
FUEL INJECTION SYSTEM	
BLOWER.....	B0.07.0
BLOWER.....	B0.07.1
FASTENINGS.....	B0.07.2
HIGH PRESSURE PIPE.....	B0.07.3
FUEL INJECT. PUMP.....	B0.07.4
FUEL INJECTOR.....	B0.07.5
FUEL DOUBLE FILTER.....	B0.07.6
ROLLER TAPPET.....	B0.07.7
HOSE PIPE.....	B0.07.8
FUEL PRELIMINARY FILTER.....	B0.07.9
FUEL SUPPLY PUMP.....	B0.07.10
AUTO RADIO SYSTEM.....	B0.07.11
COOLING	
CLUTCH.....	B0.09.0
HOSE CONNECTION.....	B0.09.1
HOSE CONNECTION.....	B0.09.2
THREADED JOINT.....	B0.09.3
ACCESSORIES.....	B0.09.4
ACCESSORIES.....	B0.09.5
BREATHER.....	B0.09.6
KUEHLW.EINL.STUTZ.....	B0.09.7
THERMOSTAT.....	B0.09.8
CONNECTION.....	B0.09.9
COOLING WATER PUMP.....	B0.09.10
INTAKE - EXHAUST MANIFOLDS	
EXHAUST PIPE.....	B0.10.0
EXHAUST PIPE.....	B0.10.1
FASTENINGS.....	B0.10.2
FASTENINGS.....	B0.10.3
FASTENINGS.....	B0.10.4
ADJUSTMENT SLEEVE.....	B0.10.5
ADJUSTMENT SLEEVE.....	B0.10.6
MANIFOLD.....	B0.10.7

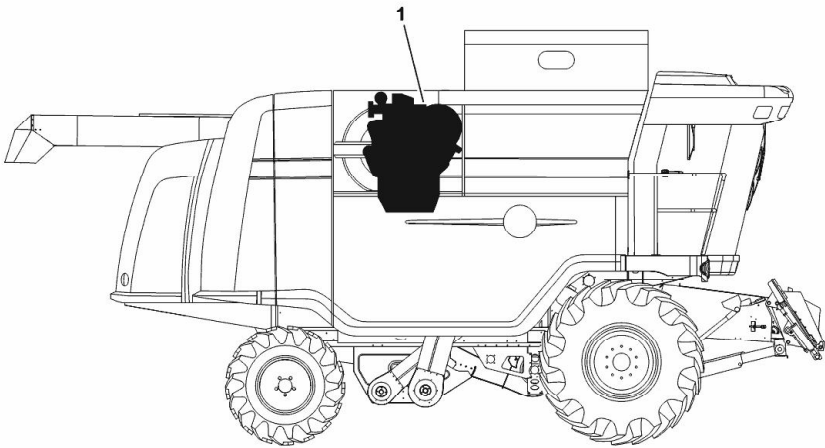
CONNECTING PIPE.....	B0.10.8
CLOSING COMPONENTS.....	B0.10.9
EXHAUST PIPE ELBOW.....	B0.10.10
EXHAUST MANIFOLD.....	B0.10.11
EXHAUST MANIFOLD.....	B0.10.12
HEAT SHIELD.....	B0.10.13
CONNECTION PIECE.....	B0.10.14
AIR INTAKE TUBE.....	B0.10.15
CONNECTION.....	B0.10.16
CONNECTION.....	B0.10.17
FASTENINGS.....	B0.10.18
TURBOCHARGER	
TURBOCHARGER.....	B0.11.0
FASTENINGS.....	B0.11.1
FUSE 1A - 30A.....	B0.11.2
SHAFT PROTECTOR - DRIVEN STEERING AXLE.....	B0.11.3
Electrical accessories	
FASTENINGS.....	B0.12.21000
ANSCHLUSSSTECKER.....	B0.12.21000
ACCESSORIES.....	B0.12.21000
PLUG-IN CONNECTOR.....	B0.12.21000
PLUG-IN CONNECTOR.....	B0.12.21000
PLUG-IN CONNECTOR.....	B0.12.21000
ELECTRONIC CONTROL UNIT - ENGINE.....	B0.12.21000
SHAFT PROTECTOR - DRIVEN STEERING AXLE.....	B0.12.21000
STARTER.....	B0.12.21000
IMPULSETRANSMITTER.....	B0.12.21000
PLUG-IN CONNECTOR.....	B0.12.21000
CONNECTING PIPE.....	B0.12.21000
ACCESSORIES.....	B0.12.21000
PLUG-IN CONNECTOR.....	B0.12.21000
OIL PRESSUR.SWITCH.....	B0.12.21000
TEMPER.TRANSMITTER.....	B0.12.21000
BLOWER.....	B0.12.21000
TEMPERATURE DISPLAY.....	B0.12.21000
PLUG-IN CONNECTOR.....	B0.12.21000
IMPULSETRANSMITTER.....	B0.12.21000
GENERATOR.....	B0.12.21000
ENGINE ELECTRICAL SYSTEM.....	B0.12.21000
CONNECTING PIPE.....	B0.12.21000
CONNECTING PIPE.....	B0.12.21000
FASTENINGS.....	B0.12.21000
COVER PLATE.....	B0.12.21000

DEUTZ ENGINE TCD 2015 (330kW/442HP)

Fig.	P/n	QTY	Name
------	-----	-----	------

Notes:
[7545 RTS]

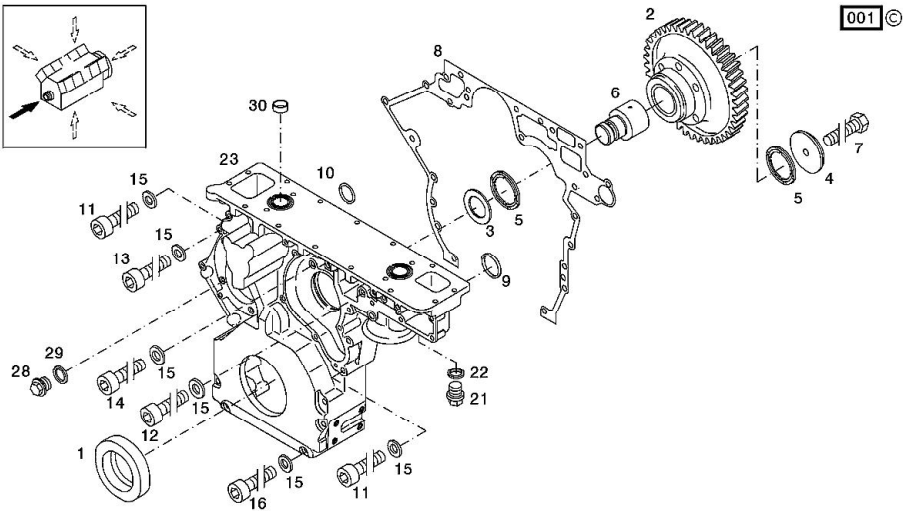
1	0.000.0000.1	1	cannot be supplied ON ORDERING PLEASE ENGINE NO. REQUIRED
---	--------------	---	---



H9_Z72A0_DX_M-A-001

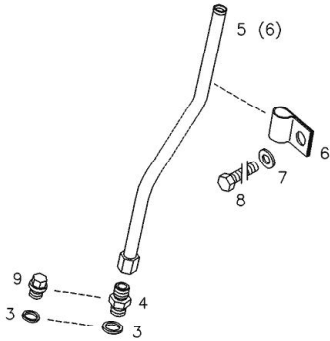
SUPPORTS

Fig.	P/n	QTY	Name
Notes: [7545 RTS]			
1	04225441	1	oil seal
2	04262908	1	none
3	04264437	1	ring
4	04221451	1	washer
5	04221452	2	ring
6	04264438	1	pin
7	01148464	1	pipe fitting DIN 933 -M12X120-8.8-ZNAL-A
8	04261959	1	gasket
9	01212510	1	oil seal H 2927 -30X4-FPM-1-70
10	01179935	1	oil seal 12x4 H 2927 -12X4-FPM1-70
11	01148385	9	screw ISO 4762 -M10X110-10.9-ZNAL-A
12	01110713	2	screw ISO 4762 -M10X100-10.9-A4C
13	01110695	5	screw m 10 x 70 ISO 4762 -M10X70-10.9-OELGESCHW
14	01137112	2	screw ISO 4762 -M10X65-10.9-A4C
15	01107550	24	washer ISO 7092 -10-140HV-A4C*
16	01144747	5	screw m10x150 ISO 4762 -M10X150-10.9-OELGESCHW
21	01148427	2	screw DIN 910 -M14X1,5-ST-ZNAL-A
22	01118687	2	oil seal DIN 7603 -A14X18-AL
23	04268993	1	support
28	01118971	1	screw DIN 7604 -AM18X1,5-ST-A4C
29	01118712	1	oil seal a 18x22 d7603 DIN 7603 -A18X22-AL
30	04225590	2	bush



Section: B0 - ENGINE
FUEHRUNGSROHR

Fig.	P/n	QTY	Name
Notes: [7545 RTS]			
3	01118693	2	gasket 14x20 DIN 7603 -A14X20-CU
4	02409121	1	vent 30 Nm
5	04224544	1	guide MIT POS.... (6)
6	03369462	1	fascia
7	02420277	1	washer
8	01151547	1	screw 70 Nm DIN 933 -M12X25-8.8
9	01133632	1	screw 45 Nm DIN 910 -M14X1,5-ST-ZNPHRF



000

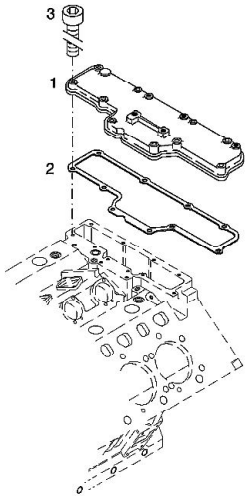
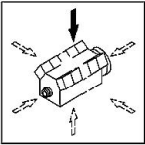
Section: B0 - ENGINE
TUNNEL COVER

Ref: B0.01.4

Fig.	P/n	QTY	Name
------	-----	-----	------

Notes:
[7545 RTS]

1	04263572	1	cover
2	04263873	1	gasket
3	01148435	10	screw
ISO 4762 -M8X45-8.8-ZNAL-A			



002 ©

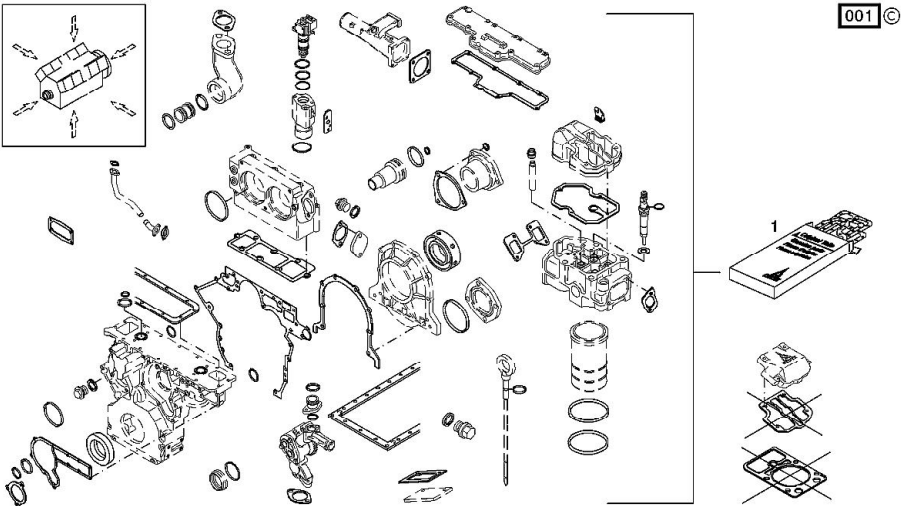
Section: B0 - ENGINE
SERIE GUARNIZIONI

Ref: B0.01.5

Fig.	P/n	QTY	Name
------	-----	-----	------

Notes:
[7545 RTS]

1	02931719	1	<p>gasket set</p> <p>Il kit guarnizioni non contiene Il kit guarnizioni non contiene Il kit guarnizioni non contiene Il kit guarnizioni non contiene Il kit guarnizioni non contiene Il kit guarnizioni non contiene Il kit guarnizioni non contiene TCD 2015 V06 base del motore</p>
---	----------	---	---



COVER PLATE

Fig.	P/n	QTY	Name
------	-----	-----	------

Notes:
[7545 RTS]

1	04225442	1	special oil seal
2	04264146	1	gasket
3	01118654	10	oil seal 8x14 d7603 DIN 7603 -A8X14-CU
4	03361375	2	bushing
5	04610509	1	shield
6	01110582	9	screw 21 Nm ISO 4762 -M8X30-8.8
7	01148435	1	screw 21 Nm ISO 4762 -M8X45-8.8-ZNAL-A
185	01319911	1	sealing compound ml. 50

