



PARTS MANUAL

AGROTRON 7200 ST TRACTOR

PRINTED BY :
heavy-equipmentmanual.com

AGROTRON 7200 ST

A0 - TRACTOR

CONSUMABLE MATERIALS

LIQUID GASKET H 699 -DEUTZ DW 43.....	A0.03.0 (1)
LUBRICANTS AND SEALANTS.....	A0.03.1 (1)
LUBRICANTS AND SEALANTS.....	A0.03.2 (1)
LUBRICANTS AND SEALANTS.....	A0.03.3 (1)
LUBRICANTS AND SEALANTS F.O.P.S.....	A0.03.5 (1)

AGROTRON 7200 ST

Section: A0 - TRACTOR

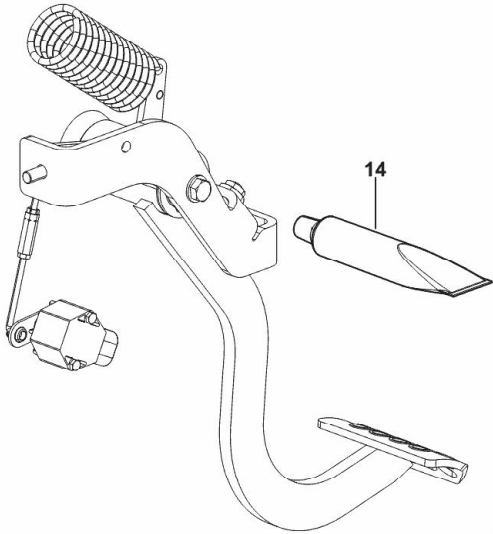
Ref: A0.03.0 (1)

LIQUID GASKET H 699 -DEUTZ DW 43

Fig.	P/n	QTY	Name
------	-----	-----	------

Notes:
- FOR TYPES WITHOUT AGROSKY [AGROTRON 7200 ST]

14	01009463	0.05	sealing compound H 699 -DEUTZ DW 43
----	----------	------	-------------------------------------



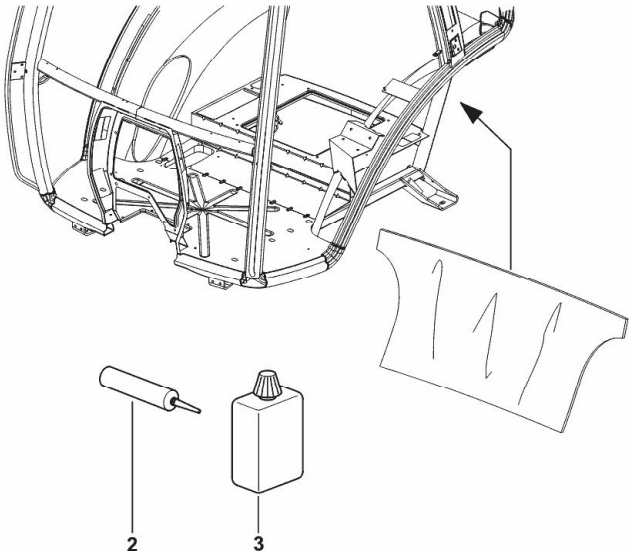
K9_V8765_01_0-C-001

LUBRICANTS AND SEALANTS

Fig.	P/n	QTY	Name
------	-----	-----	------

Notes:
[AGROTRON 7200 ST]

2	04414226	0.3	sealing compound HENKEL 211-342
3	04414225	0.01	genuine lubricants HENKEL 148785



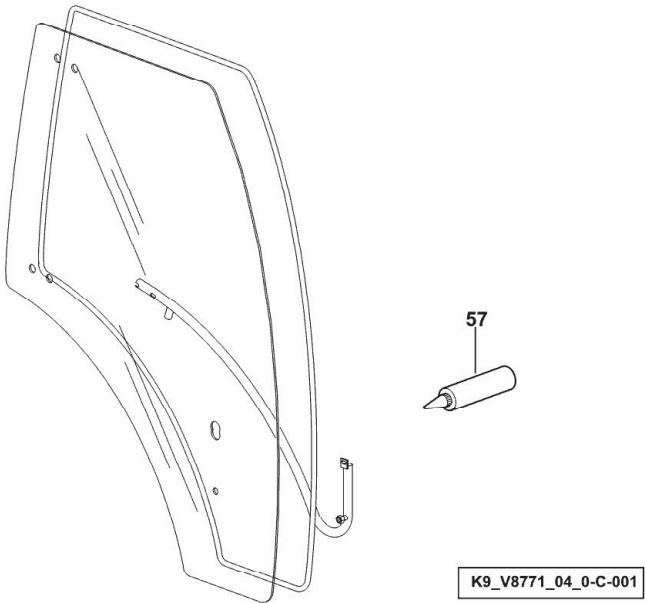
K9_95071_18_0-B-001

LUBRICANTS AND SEALANTS

Fig.	P/n	QTY	Name
------	-----	-----	------

Notes:
[AGROTRON 7200 ST]

57	01016121	2	adhesive
----	----------	---	----------

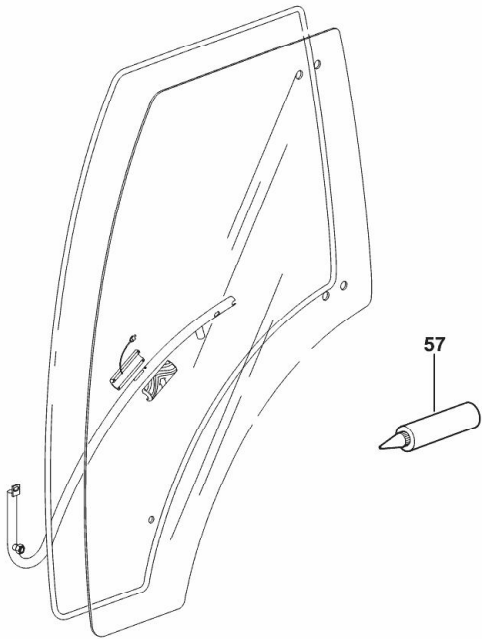


LUBRICANTS AND SEALANTS

Fig.	P/n	QTY	Name
------	-----	-----	------

Notes:
[AGROTRON 7200 ST]

57	01016121	2	adhesive
----	----------	---	----------



K9_V8771_05_0-C-001

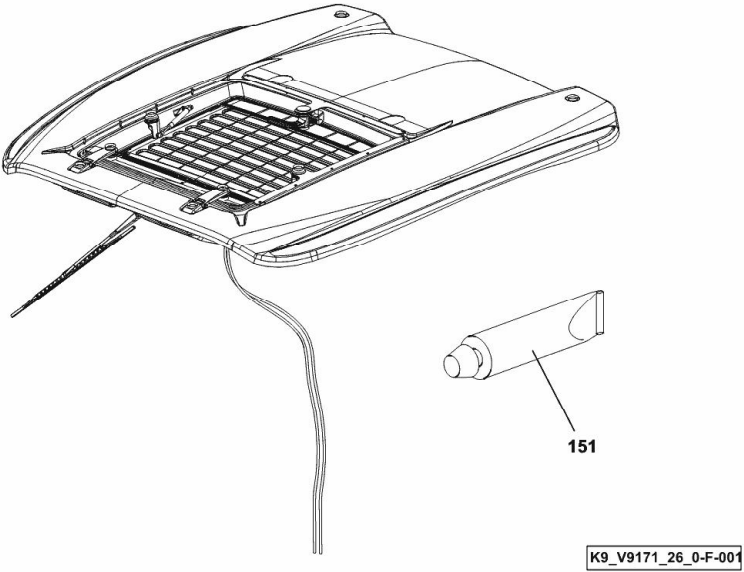
LUBRICANTS AND SEALANTS F.O.P.S.

Fig.	P/n	QTY	Name
------	-----	-----	------

Notes:

[AGROTRON 7200 ST]

151	3.4650.056.0	1	sealing compound Terostat 92
-----	--------------	---	------------------------------



AGROTRON 7200 ST

B0 - ENGINE

GENERAL

ENGINE..... B0.00.0 (1)

CYLINDER BLOCK

FASTENINGS..... B0.01.0

SERIE GUARNIZIONI..... B0.01.2

BLEEDING TUBE..... B0.01.3

CRANKCASE BREATHER..... B0.01.4

KURBELGEHAEUSE..... B0.01.5

ACCESSORIES..... B0.01.6

OIL FILLER NECK..... B0.01.7

ACCESSORIES..... B0.01.8

KURBELGEHAEUSE..... B0.01.9

ACCESSORIES..... B0.01.10

PLUG..... B0.01.11

FILLER CAP..... B0.01.12

PISTON COOL.NOZZLE..... B0.01.14

FLANGE..... B0.01.15

CRANKSHAFT

COMPRESSOR DRIVEBELT..... B0.02.0 (1)

FASTENINGS..... B0.02.1

KEILR.SCHEIBENANB..... B0.02.2

CRANKSHAFT..... B0.02.4

FLYWHEEL..... B0.02.5

PLUG..... B0.02.6

ACCESSORIES..... B0.02.7

MAIN BEARINGS..... B0.02.8

FLYWHEEL..... B0.02.9

CYLINDERS - PISTONS - CONNECTING RODS

PISTON..... B0.03.0

PISTON..... B0.03.1

CONNECTING ROD..... B0.03.2

TIMING

FASTENINGS..... B0.04.0

BUSH..... B0.04.1

BUSH..... B0.04.2

CAMSHAFT..... B0.04.3

CAMSHAFT..... B0.04.4

VALVE DRIVE..... B0.04.5

PLUG..... B0.04.6

GEARCASE..... B0.04.7

GEARCASE..... B0.04.8

VENTILSTEUERUNG.....	B0.04.9
CYLINDER HEAD	
FASTENINGS.....	B0.05.0
FASTENINGS.....	B0.05.1
ENGINE MOUNTING.....	B0.05.2
CLOSING COMPONENTS.....	B0.05.3
CYLINDER HEAD.....	B0.05.4
CYLINDER HEAD.....	B0.05.5
VALVE MECHAN.COVER.....	B0.05.6
LUBRICATION	
OIL SUCTION PIPE.....	B0.06.0
BLANKING PARTS.....	B0.06.1
CLOSING COMPONENTS.....	B0.06.2
OIL PAN.....	B0.06.3
OELWANNE.....	B0.06.4
BLANKING PARTS.....	B0.06.5
OIL COOLER BOX.....	B0.06.6
FUEL INJECTION SYSTEM	
FASTENINGS.....	B0.07.0
FASTENINGS.....	B0.07.1
ADD-ON PARTS ENGINE.....	B0.07.2
ENGINE INJECTION VALVE.....	B0.07.3
FUEL FEED PUMP.....	B0.07.4
FUEL FILTER.....	B0.07.5
FUEL LINE.....	B0.07.6
FUEL LINE.....	B0.07.7
FUEL PIPE.....	B0.07.8
FUEL PUMP.....	B0.07.9
ROLLER TAPPET.....	B0.07.10
PLUG.....	B0.07.11
DISTRIBUTOR.....	B0.07.12
ENGINE FUEL PUMP.....	B0.07.13
RAIL.....	B0.07.14
ROLLER TAPPET.....	B0.07.15
MECHANICAL - ELECTRONIC GOVERNOR	
ELECTRONIC CONTROL UNIT - ENGINE.....	B0.08.0
COOLING	
FASTENINGS.....	B0.09.0
FASTENINGS.....	B0.09.1
COOLING WATER PUMP.....	B0.09.2
FASTENINGS.....	B0.09.3
COOLING WATER PUMP.....	B0.09.4
HOSE CONNECTION.....	B0.09.5
CONNECTION.....	B0.09.6

CONNECTION.....	B0.09.7
TRAEGERPLATTE.....	B0.09.8
TRAEGERPLATTE.....	B0.09.9
SCREW PLUG.....	B0.09.10
CLOSING COMPONENTS.....	B0.09.11
DRIVING PARTS.....	B0.09.12
HEATER CONNECTION.....	B0.09.13
HEATER CONNECTION.....	B0.09.14
THERMOSTAT.....	B0.09.15
LUEFTERLAGERUNG.....	B0.09.16
COVER.....	B0.09.17
LUEFTERLAGERUNG.....	B0.09.18
THERMOSTAT.....	B0.09.19
V-BELT.....	B0.09.20
V-BELT.....	B0.09.21
INTAKE - EXHAUST MANIFOLDS	
EXHAUST PIPE.....	B0.10.0
THERMO STARTER.....	B0.10.1
MANIFOLD.....	B0.10.2
BLANKING PARTS.....	B0.10.3
ACCESSORIES.....	B0.10.4
TURBOCHARGER	
TURBOCHARGER.....	B0.11.0
TURBOCHARGER.....	B0.11.1
LUBRICATION.....	B0.11.2
LUBRICATION.....	B0.11.3
Electrical accessories	
FASTENINGS.....	B0.12.0
FASTENINGS.....	B0.12.1
FASTENINGS.....	B0.12.2
IMPULSE TRANSMITTER.....	B0.12.3
ACCESSORIES.....	B0.12.4
TEMPER. TRANSMITTER.....	B0.12.5
ACCESSORIES.....	B0.12.6
TEMPER. TRANSMITTER.....	B0.12.7
CONNECTING PIPE.....	B0.12.8
CONNECTING PIPE.....	B0.12.9
KABELBAUM.....	B0.12.10
STARTER.....	B0.12.11
FASTENINGS.....	B0.12.12
ACCESSORIES.....	B0.12.13
GENERATOR.....	B0.12.14
OIL PRESSUR. SWITCH.....	B0.12.15
STARTER.....	B0.12.16