



PARTS MANUAL

AGROPLUS 95 NEW TRACTOR

PRINTED BY :
heavy-equipmentmanual.com

Agroplus 95 NEW

ACCESSORIES

GENERAL

AUXILIARY SERVICE CONTROL VALVE FEED BOSCH.....	0E.00.3
AUXILIARY SERVICE CONTROL VALVE FEED SALAMI.....	0E.00.4
4-WAY AUXILIARY DISTRIBUTOR BOSCH.....	0E.00.11
4-WAY HYDRAULIC CONTROL VALVE BOSCH.....	0E.00.12
4/8-WAY AUXILIARY DISTRIBUTOR SALAMI.....	0E.00.19
4-WAY AUXILIARY DISTRIBUTOR SALAMI.....	0E.00.20
4-WAY HYDRAULIC CONTROL VALVE SALAMI.....	0E.00.27
8-WAY AUXILIARY DISTRIBUTOR BOSCH.....	0E.00.28
8-WAY AUXILIARY DISTRIBUTOR BOSCH.....	0E.00.35
8-WAY AUXILIARY DISTRIBUTOR SALAMI.....	0E.00.36
8-WAY AUXILIARY DISTRIBUTOR SALAMI.....	0E.00.43
BRACKET.....	0E.00.44
4-WAY QUICK COUPLERS.....	0E.00.51
8-WAY QUICK COUPLERS.....	0E.00.52
8-WAY QUICK COUPLERS.....	0E.00.59
4-WAY CONTROL VALVES - OIL RECOVERY.....	0E.00.60
8-WAY CONTROL VALVES - OIL RECOVERY.....	0E.00.67
OIL REGULATOR CONTROL.....	0E.00.68
3-POINT LINKAGE WITH AUTOMATIC COUPLERS A = mm 30.....	0E.00.75
3-POINT LINKAGE WITH AUTOMATIC COUPLERS A = mm 34.....	0E.00.76
3 POINT HITCH.....	0E.00.83
3 POINT HITCH.....	0E.00.84
3-POINT HITCH - ADJUSTABLE RH LIFT RODS.....	0E.00.91
THREE-POINT HITCH - MANUAL LATERAL STABILIZERS.....	0E.00.92
BRACKET FOR TOP LINK SUPPORT SPRING.....	0E.00.99
3 POINT HITCH.....	0E.00.100
3 POINT HITCH.....	0E.00.107
3-POINT HITCH WITH HYDRAULIC LIFT ROD dx/rh/re.....	0E.00.108
THREE-POINT HITCH - AUTOMATIC LATERAL STABILIZERS.....	0E.00.115
TOWING BAR.....	0E.00.116
FRONT TOWING HITCH.....	0E.00.123
FRONT TOWING HITCH.....	0E.00.124
REAR TOWING HITCH.....	0E.00.131
REAR TOWING HITCH CEE.....	0E.00.132
REAR TOWING HITCH CAT: "C".....	0E.00.139
REAR TOWING HITCH CAT: "D".....	0E.00.140
REAR TOWING HITCH CAT: "D2".....	0E.00.147
REAR TOWING HITCH CAT: "D2".....	0E.00.148
REAR TOWING HITCH CAT: "D3".....	0E.00.155
DRAWBAR COUPLING AUTOM. Ø 38 CEE.....	0E.00.156

REAR OSCILLATING HITCH CAT. " A "	0E.00.163
REAR OSCILLATING HITCH - FOR MODELS WITH CLEVIS GRASSI	0E.00.164
REAR OSCILLATING HITCH EXPORT F	0E.00.171
REAR TOWING HITCH CEE	0E.00.172
REAR TOWING HITCH EXPORT F	0E.00.179
REAR TOWING HITCH EXPORT CH	0E.00.180
PICK-UP-HITCH	0E.00.187
FRONT WEIGHT CARRIER	0E.00.188
FRONT BALLAST n. 8	0E.00.195
FRONT BALLAST 400 Kg	0E.00.196
BALLAST LOCK BAR	0E.00.203
HYDRAULIC BREAKING FOR TRAILER - ITALY -	0E.00.204
HYDRAULIC BREAKING FOR TRAILER - ITALY -	0E.00.211
HYDRAULIC BREAKING FOR TRAILER - EXPORT F	0E.00.212
HYDRAULIC BREAKING FOR TRAILER - EXPORT F	0E.00.219
HYDRAULIC BREAKING FOR TRAILER - ITALY -	0E.00.220
TRAILER BRAKING COMPONENTS	0E.00.227
TRAILER BRAKING COMPONENTS	0E.00.228
AIR BRAKING - ITALY -	0E.00.235
AIR BRAKING - ITALY -	0E.00.236
AIR BRAKING FOR 'ITALY' TRAILER	0E.00.243
AIR BRAKING FOR 'ITALY' TRAILER	0E.00.244
AIR BRAKING FOR 'ITALY' TRAILER	0E.00.251
AIR BRAKING FOR 'EXPORT D' TRAILER - FOR TYPES WITH BOSCH AUXILIARY SERVICE CONTROL VALVE	0E.00.252
AIR BRAKING FOR 'EXPORT D' TRAILER - FOR TYPES WITH BOSCH AUXILIARY SERVICE CONTROL VALVE	0E.00.259
AIR BRAKING FOR 'EXPORT D' TRAILER - FOR TYPES WITH BOSCH AUXILIARY SERVICE CONTROL VALVE	0E.00.260
AIR BRAKING FOR 'EXPORT D' TRAILER	0E.00.267
AIR BRAKING FOR 'EXPORT D' TRAILER	0E.00.268
AIR BRAKING FOR 'EXPORT D' TRAILER	0E.00.275
TOOL POUCH	0E.00.276
CYLINDER PARTS	0.010.0883.4/20.A
COUPLING PARTS CUNA	0.010.4582.4.A
DISTRIBUTOR CONTROL	0.010.8216.4/40.A
ENGAGEMENT	0.010.8473.0.A
ENGAGEMENT	0.010.9832.0.A
DISTRIBUTOR CONTROL	0.011.0123.4/30.A
TANK - PARTS	0.011.0212.3.A
CYLINDER PARTS	0.011.1052.4.A
SUPPORT GRASSI	0.011.3710.4.A
STABILIZER	0.011.3849.4/10.A
STABILIZER	0.011.3850.4/10.A
TRAILER BRAKE VALVE	0.011.8633.4.A
PICK-UP-HITCH	0.012.3998.4/30.A
LINKAGE	0.014.1405.3.A

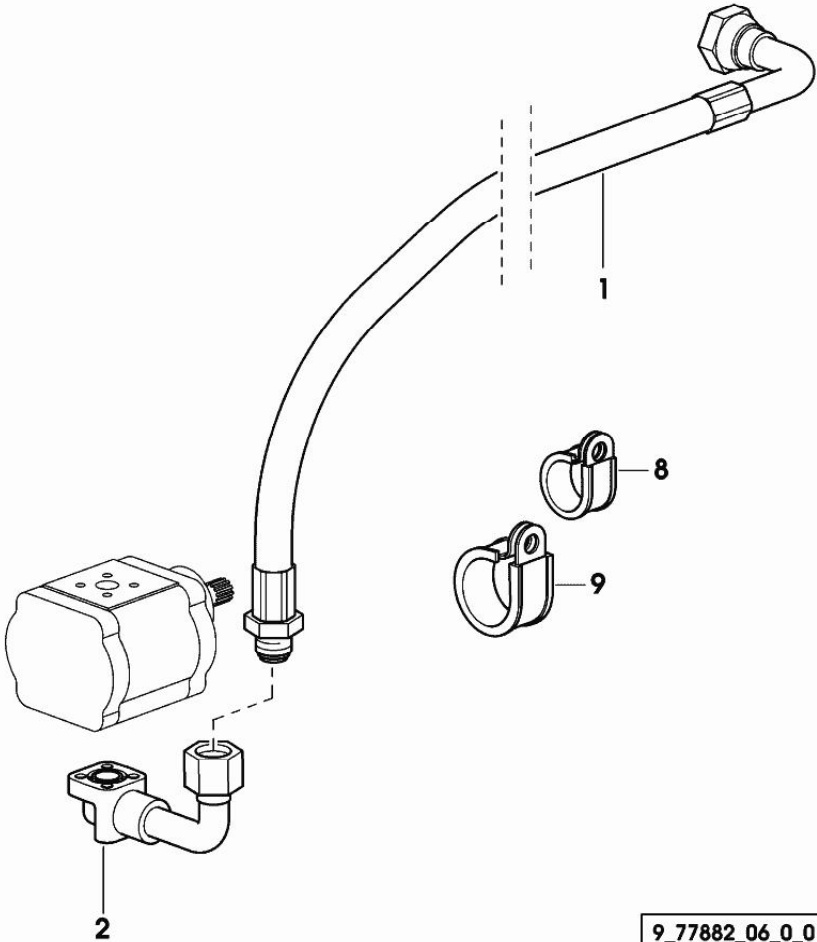
TOWING HITCH.....	0.014.1420.3.A
DRAWBAR COUPLING mm 38.....	0.014.4449.3/20.A
DRAWBAR COUPLING mm 38.....	0.014.4449.3/30.A
REAR TOWING HITCH CAT: "C".....	0.014.4450.3.A
REAR TOWING HITCH CAT: "D".....	0.014.4451.3.A
DRAWBAR COUPLING CAT: "D2".....	0.014.4452.3/10.A
DRAWBAR COUPLING.....	0.014.4453.3.A
DRAWBAR COUPLING.....	0.014.4454.3/20.A
DRAWBAR COUPLING.....	0.014.4455.3.A
CHASSIS.....	0.014.4459.4/10.A
DRAWBAR COUPLING D2.....	0.014.4461.3.A
CHASSIS.....	0.014.4484.3/10.A
SLIDE mm 320.....	0.014.4485.3.A
VALVE PARTS.....	04398756.A
VALVE PARTS.....	2.3719.400.0/40.A
TRAILER BRAKE VALVE.....	2.3719.550.0/40.A
DISTRIBUTOR PARTS.....	2.3729.130.0.A
DISTRIBUTOR PARTS.....	2.3729.140.0.A
DISTRIBUTOR PARTS.....	2.3729.150.0/10.A
DISTRIBUTOR PARTS.....	2.3729.170.0.A
DISTRIBUTOR PARTS.....	2.3729.180.0.A
DISTRIBUTOR PARTS.....	2.3729.190.0.A
DISTRIBUTOR PARTS.....	2.3729.200.0/10.A
VALVE PARTS.....	2.3729.210.0/20.A
TRAILER BRAKE VALVE.....	2.3729.220.0/20.A
DISTRIBUTOR PARTS.....	2.3729.520.0/10.A

AUXILIARY SERVICE CONTROL VALVE FEED BOSCH

Fig.	P/n	QTY	Name
------	-----	-----	------

Notes:
[Agroplus 95 NEW]

1	0.012.1550.3/10	1	tube
2	0.012.1549.3/10	1	flange
8	2.6839.057.0		clamp 30/25
9	2.6839.060.0	1	clamp 40/25

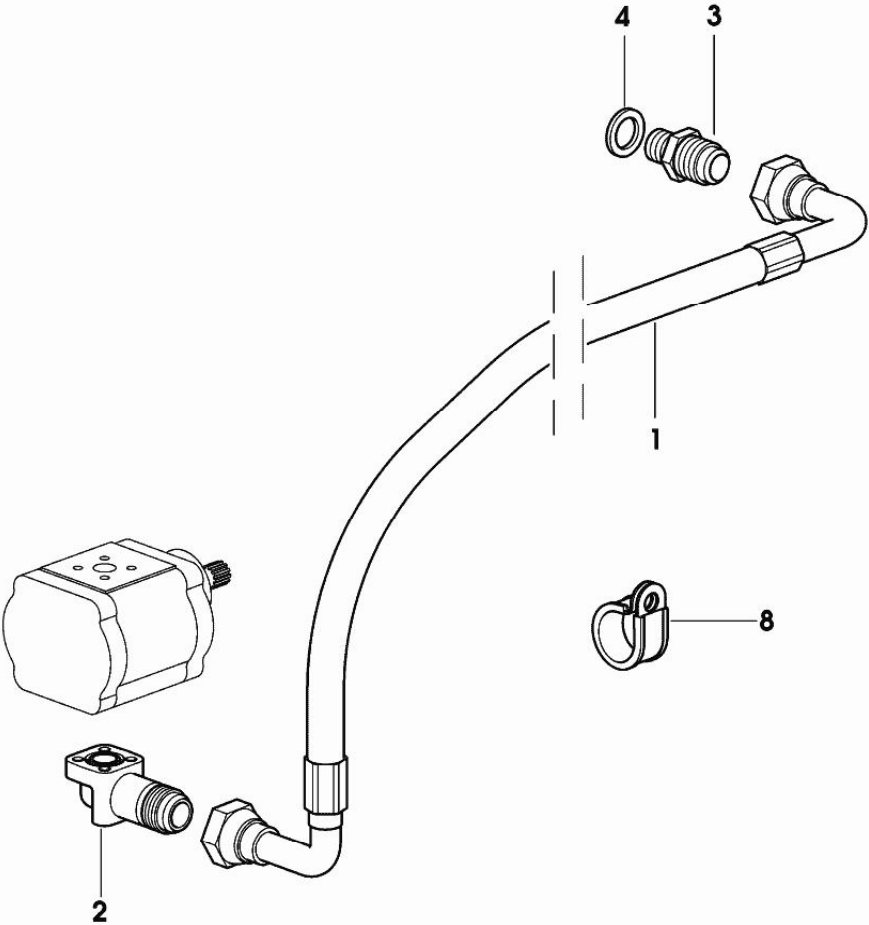


AUXILIARY SERVICE CONTROL VALVE FEED SALAMI

Fig.	P/n	QTY	Name
------	-----	-----	------

Notes:
[Agroplus 95 NEW]

1	0.011.0432.3/10	1	tube
2	0.009.2860.0/10	1	flange
3	2.3261.013.2	1	pipe fitting m 22 p.1.5-1 1/16"
4	2.1560.017.0	1	gasket 22.2 x 27
8	2.6839.057.0	1	clamp 30/25

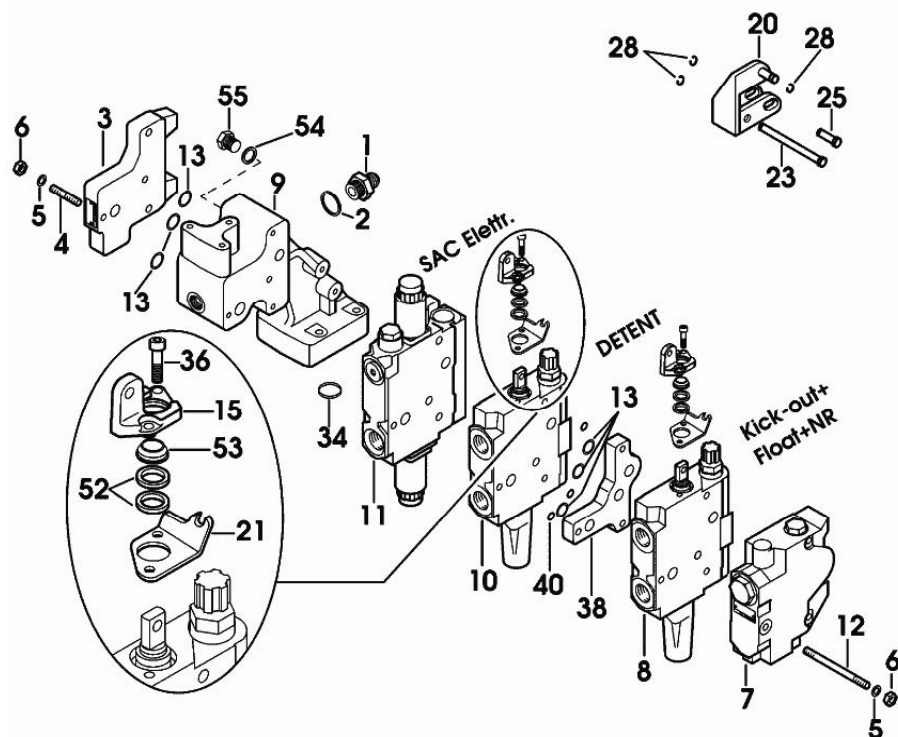


9_77882_01_0_0

Section: ACCESSORIES

4-WAY AUXILIARY DISTRIBUTOR BOSCH

Fig.	P/n	QTY	Name
Notes:			
[Agroplus 95 NEW]			
1	2.3339.989.2	1	pipe fitting m 27 p.2-7/8"-14jic
2	2.1560.055.0	1	gasket 27.3x31.9
3	2.3729.120.0	1	spool valve
4	2.0433.015.7	3	stud bolt m 8 p.1 x 50
5	2.1475.102.2	6	washer 8.4 x 16
6	2.1012.305.7	6	nut m 8 p.1 x 8
7	2.3729.520.0/10	1	plate
			COMPONENT PARTS SEE COMPONENTS LIST
			☞ 2.3729.520.0/10
8	2.3729.130.0	1	spool valve
			COMPONENT PARTS SEE COMPONENTS LIST
			☞ 2.3729.130.0
9	0.012.2404.0/10	1	support
10	2.3729.140.0	1	spool valve
			COMPONENT PARTS SEE COMPONENTS LIST
			☞ 2.3729.140.0
11	2.3729.150.0/10	1	spool valve
			COMPONENT PARTS SEE COMPONENTS LIST
			☞ 2.3729.150.0/10
12	2.0433.035.7	3	stud bolt m 8 p.1x200
13	2.1531.048.0	6	oil seal 18.72x2.62
15	0.010.8533.0/10	2	support
20	0.012.1516.2	2	lever
21	0.012.1629.0	2	plate
23	2.1699.541.2	1	pin 6x74.5
25	2.1699.529.2	2	pin 6x22
28	01175725	5	clip 6, d128
34	2.1531.094.0	1	oil seal 36,09x3,53
36	2.0312.102.2	8	screw m 6 p.1 x 12
38	0.011.6040.0/10	1	spacer 13
40	2.1589.471.0	3	shim 8.1x11.8x0.04
52	0.011.9918.0	4	spacer 18.6 x 25 x 4.3
53	0.011.9929.0	2	ring
54	2.1560.010.0	1	gasket 14.2 x 20
55	2.3110.403.2	1	plug m 14



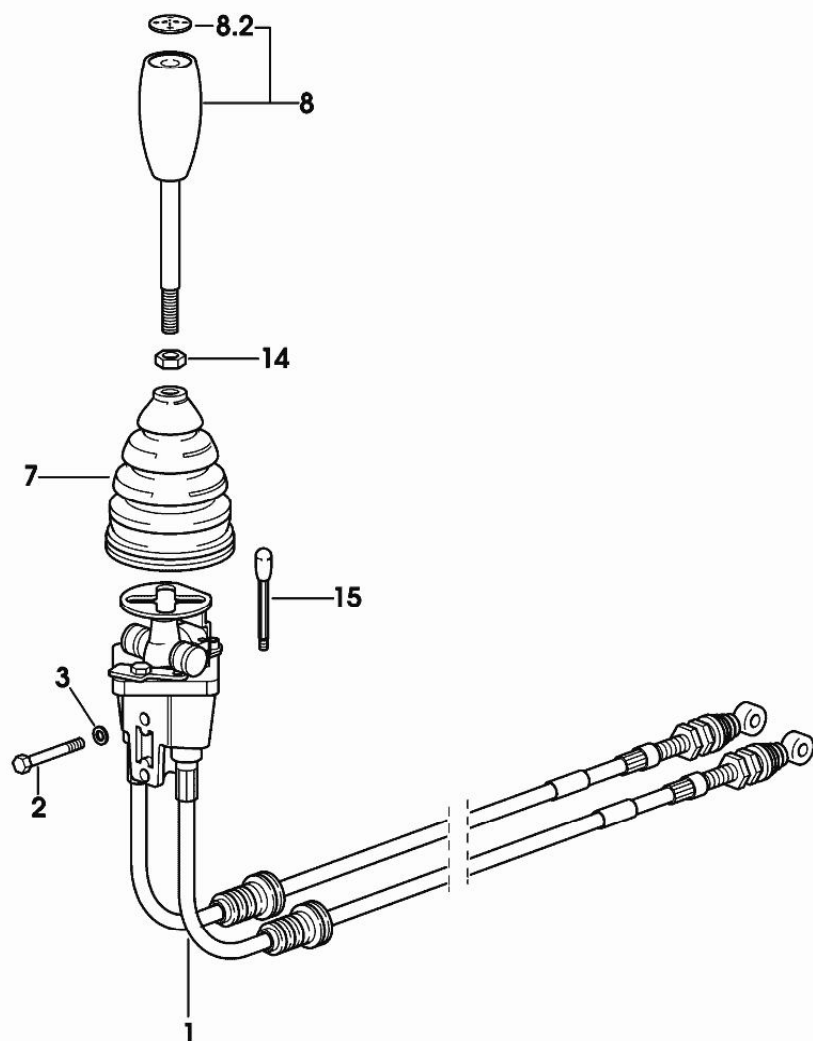
4-WAY HYDRAULIC CONTROL VALVE BOSCH

Fig.	P/n	QTY	Name
------	-----	-----	------

Notes:

[Agroplus 95 NEW]

1	0.012.3283.4	1	rod
2	2.0112.219.2	2	screw m 8 p.1.25x55
3	2.1470.004.2	2	lock washer 8
7	0.010.8917.0	1	boot
8	0.011.1306.3/10	1	lever
8.2	0.011.1303.0/10	1	cap
14	2.1011.106.2	1	nut m 10 p.1.5
15	0.010.8919.2/10	1	stop



9_77888_17_0_0

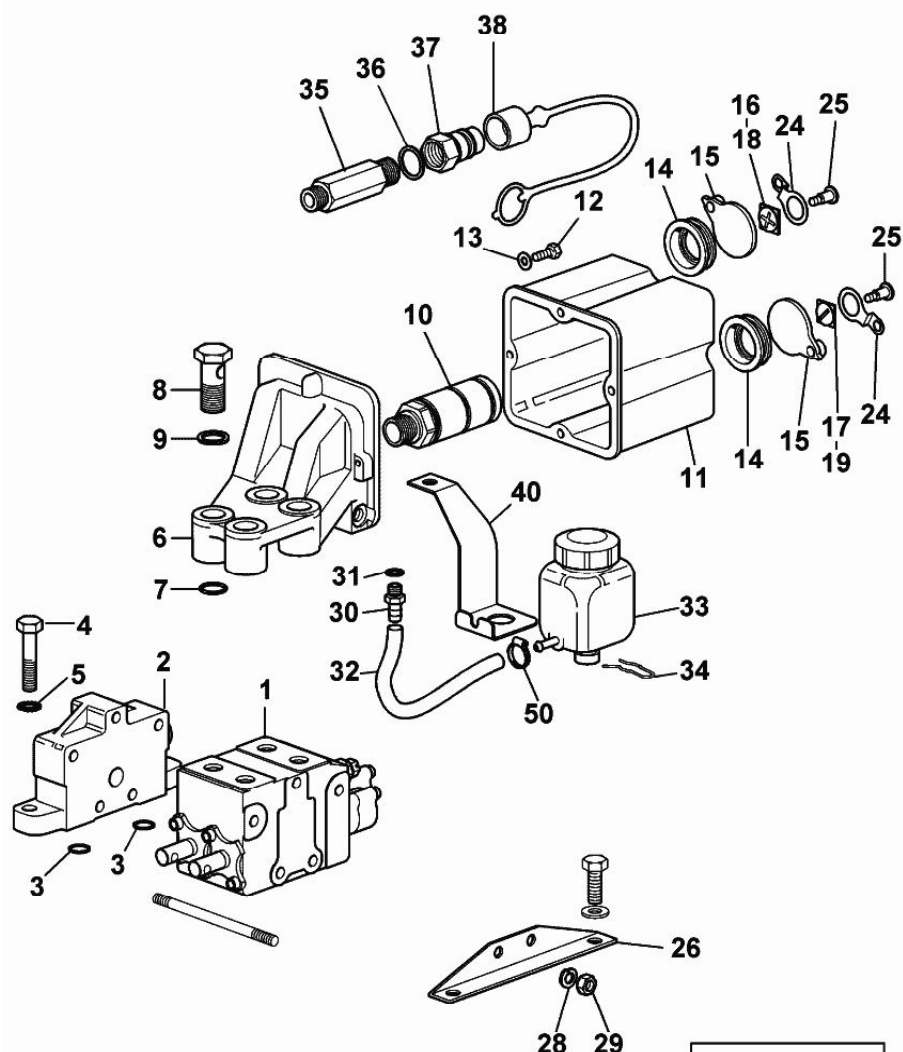
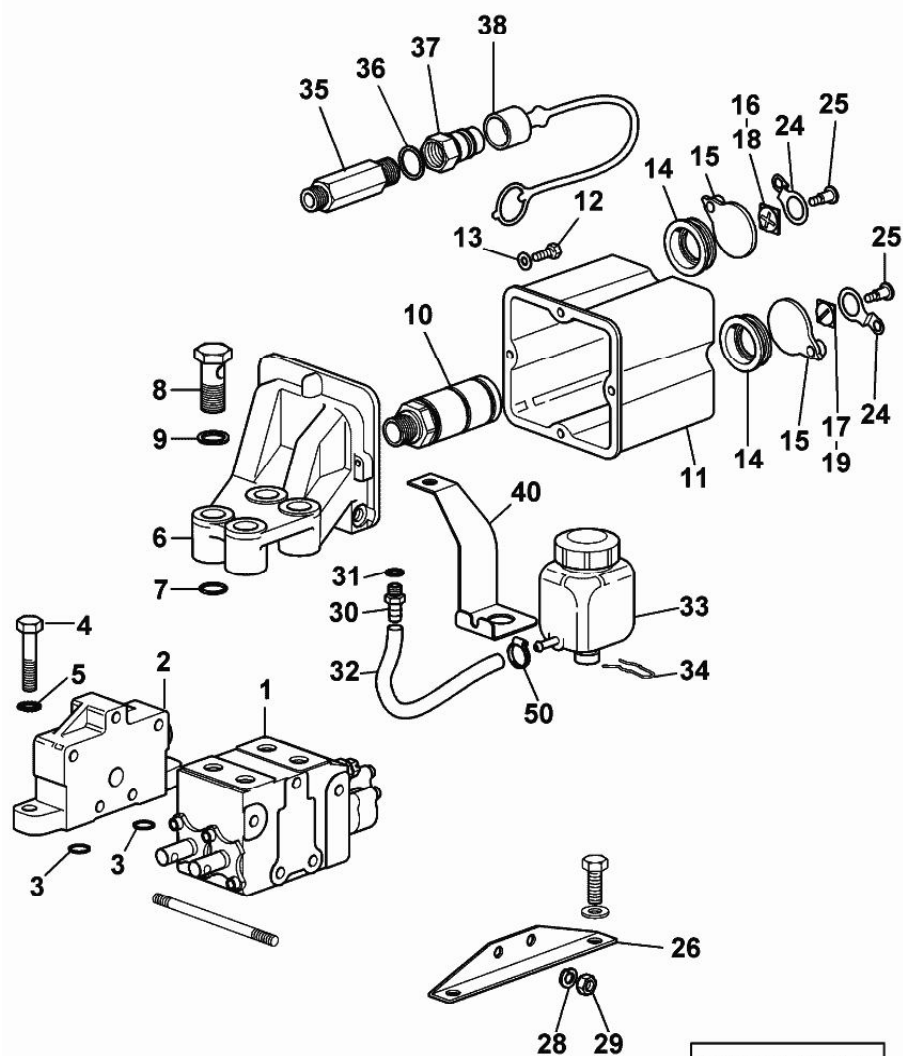
4/8-WAY AUXILIARY DISTRIBUTOR SALAMI

Fig.	P/n	QTY	Name
Notes:			
[Agroplus 95 NEW]			
1	2.3729.170.0	1	spool valve COMPONENT PARTS SEE COMPONENTS LIST ☞ 2.3729.170.0
2	0.010.8491.0/20	1	plate
3	2.1531.029.0	2	oil seal 12.37x2.62
4	2.0112.319.2	2	screw m 10 p.1.5 x 50
5	2.1470.006.2	2	lock washer 10
6	0.010.8471.0/20	1	manifold
7	2.1531.052.0	4	oil seal 20.29 x 2.62
8	2.3339.756.2	4	pipe fitting
9	2.1560.014.0	5	washer 18.2 x 24
10	0.010.8473.0	4	coupling FASTER - m 22 p.1.5 / Ø 38 COMPONENT PARTS SEE COMPONENTS LIST ☞ 0.010.8473.0
11	0.010.8474.0	1	guard
12	2.0112.005.2	4	screw m 6 p.1 x 16
13	2.1480.012.2	4	washer 6, d128
14	0.010.8475.0/10	4	dust guard
15	0.010.8476.0	4	cover
16	0.010.8477.0	1	warning light + - RED COLOUR
17	0.010.8478.0	1	warning light (-) - RED COLOUR
18	0.010.8479.0	1	warning light + - COLORE VERDE
19	0.010.8480.0	1	warning light (-) - COLORE VERDE
24	0.010.8485.0/20	4	small leaf spring
25	2.0399.249.3/10	4	screw m 6 x 20
26	0.010.8489.0	1	bracket
28	2.1475.102.2	2	washer 8.4 x 16
29	2.1012.305.7	3	nut m 8 p.1 x 8
30	2.3249.031.2	1	pipe fitting m 10
31	2.1560.005.0	1	copper gasket 10.2 x 14
32	0.012.9660.0	1	tube
33	0.011.0212.3	1	tank COMPONENT PARTS SEE COMPONENTS LIST ☞ 0.011.0212.3
34	0.171.6656.0	1	clip
35	2.3339.791.2/10	1	pipe fitting
36	2.1560.054.0	1	gasket 21 x 26

4/8-WAY AUXILIARY DISTRIBUTOR SALAMI



9_77788_15_0_0

Fig.	P/n	QTY	Name
37	0.98309.51.3/10	1	coupling 1/2
38	0.009.3149.0	1	plug
40	0.011.3192.0	1	bracket
50	2.6851.019.0	1	clamp Ø 13/20