



PARTS MANUAL

C 7205 TIER 4I COMBINE

PRINTED BY :
heavy-equipmentmanual.com

C 7205

B0 - ENGINE

GENERAL

ENGINE TCD 6.1 L6 T4I.....	B0.00.0 (1)
PARTS SET - ENGINE MOUNTING.....	B0.00.3 (1)
PARTS SET - ENGINE MOUNTING.....	B0.00.4 (1)

CYLINDER BLOCK

FASTENINGS.....	B0.01.0
FASTENINGS.....	B0.01.2
SERIE GUARNIZIONI.....	B0.01.4
BLEEDING TUBE.....	B0.01.5
CRANKCASE BREATHER.....	B0.01.6
KURBELGEHAEUSE.....	B0.01.9
ACCESSORIES.....	B0.01.10
ACCESSORIES.....	B0.01.12
PLUG.....	B0.01.14
OIL FILLER NECK.....	B0.01.19
DIPSTICK.....	B0.01.22
PISTON COOL.NOZZLE.....	B0.01.23
FLANGE.....	B0.01.27
OIL MEASURING DEVICE.....	B0.01.28

CRANKSHAFT

FASTENINGS.....	B0.02.1
CRANKSHAFT.....	B0.02.2
KEILR.SCHEIBENANB.....	B0.02.4
PLUG.....	B0.02.5
MAIN BEARINGS.....	B0.02.7
FLYWHEEL.....	B0.02.9

CYLINDERS - PISTONS - CONNECTING RODS

PISTON.....	B0.03.0
CONNECTING ROD.....	B0.03.5

TIMING

COVER PLATE.....	B0.04.0
FASTENINGS.....	B0.04.2
CAMSHAFT.....	B0.04.3
CAMSHAFT.....	B0.04.4
FASTENINGS.....	B0.04.7
VALVE DRIVE.....	B0.04.8
BUSH.....	B0.04.9
PLUG.....	B0.04.10
VENTILSTEUERUNG.....	B0.04.14
CLOSING COMPONENTS.....	B0.04.17
GEARCASE.....	B0.04.19

GEARCASE.....	B0.04.20
CYLINDER HEAD	
FASTENINGS.....	B0.05.1
ENGINE MOUNTING.....	B0.05.2
CLOSING COMPONENTS.....	B0.05.5
CYLINDER HEAD.....	B0.05.7
CYLINDER HEAD.....	B0.05.8
VALVE MECHAN.COVER.....	B0.05.10
LUBRICATION	
BLANKING PARTS.....	B0.06.2
OIL SUCTION PIPE.....	B0.06.4
CLOSING COMPONENTS.....	B0.06.5
OIL PAN.....	B0.06.7
BLANKING PARTS.....	B0.06.8
OIL COOLER BOX.....	B0.06.12
CLOSING COMPONENTS.....	B0.06.15
FUEL INJECTION SYSTEM	
FASTENINGS.....	B0.07.0
FASTENINGS.....	B0.07.2
ADD-ON PARTS ENGINE.....	B0.07.3
ENGINE INJECTION VALVE.....	B0.07.4
FUEL FEED PUMP.....	B0.07.6
FUEL FILTER.....	B0.07.7
FUEL LINE.....	B0.07.8
FUEL LINE.....	B0.07.9
FUEL PUMP.....	B0.07.11
FUEL PIPE.....	B0.07.12
ROLLER TAPPET.....	B0.07.14
PLUG.....	B0.07.15
DISTRIBUTOR.....	B0.07.17
ENGINE FUEL PUMP.....	B0.07.18
RAIL.....	B0.07.20
MECHANICAL - ELECTRONIC GOVERNOR	
ENGINE CONTROL UNIT COVER.....	B0.08.0 (1)
ELECTRONIC CONTROL UNIT - ENGINE.....	B0.08.1
COOLING	
FASTENINGS.....	B0.09.1
FASTENINGS.....	B0.09.2
COOLING WATER PUMP.....	B0.09.5
HOSE CONNECTION.....	B0.09.7
CONNECTION.....	B0.09.8
CONNECTION.....	B0.09.9
TRAEGERPLATTE.....	B0.09.11
SCREW PLUG.....	B0.09.13

CLOSING COMPONENTS.....	B0.09.14
TRAEGERPLATTE.....	B0.09.15
DRIVING PARTS.....	B0.09.16
CLOSING COMPONENTS.....	B0.09.17
LUEFTERLAGERUNG.....	B0.09.20
CLOSING COMPONENTS.....	B0.09.22
CLOSING COMPONENTS.....	B0.09.23
COVER.....	B0.09.24
V-BELT.....	B0.09.25
THERMOSTAT.....	B0.09.26
THERMOSTAT.....	B0.09.30
INTAKE - EXHAUST MANIFOLDS	
EXHAUST PIPE.....	B0.10.0
BLANKING PARTS.....	B0.10.5
ACCESSORIES.....	B0.10.8
MANIFOLD.....	B0.10.10
CHARGED AIR MANIFOLD.....	B0.10.13
TURBOCHARGER	
TURBOCHARGER.....	B0.11.1
LUBRICATION.....	B0.11.3
Electrical accessories	
FASTENINGS.....	B0.12.21000
FASTENINGS.....	B0.12.21000
IMPULSETRANSMITTER.....	B0.12.21000
ACCESSORIES.....	B0.12.21000
TEMPER.TRANSMITTER.....	B0.12.21000
TEMPER.TRANSMITTER.....	B0.12.21000
KABELBAUM.....	B0.12.21000
STARTER.....	B0.12.21000
FASTENINGS.....	B0.12.21000
ACCESSORIES.....	B0.12.21000
COVER PLATE.....	B0.12.21000
GENERATOR.....	B0.12.21000
OIL PRESSUR.SWITCH.....	B0.12.21000
FASTENINGS.....	B0.12.21000
STARTER.....	B0.12.21000

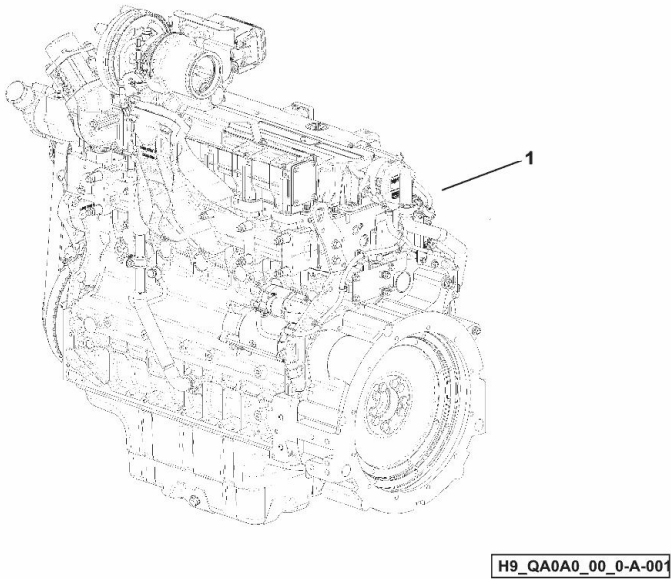
Section: B0 - ENGINE
ENGINE TCD 6.1 L6 T4I

Ref: B0.00.0 (1)

Fig.	P/n	QTY	Name
------	-----	-----	------

Notes:
[C 7205]

1	25009793	1	engine TCD 6.1 L6 T4I ON ORDERING PLEASE ENGINE NO. REQUIRED
---	----------	---	--

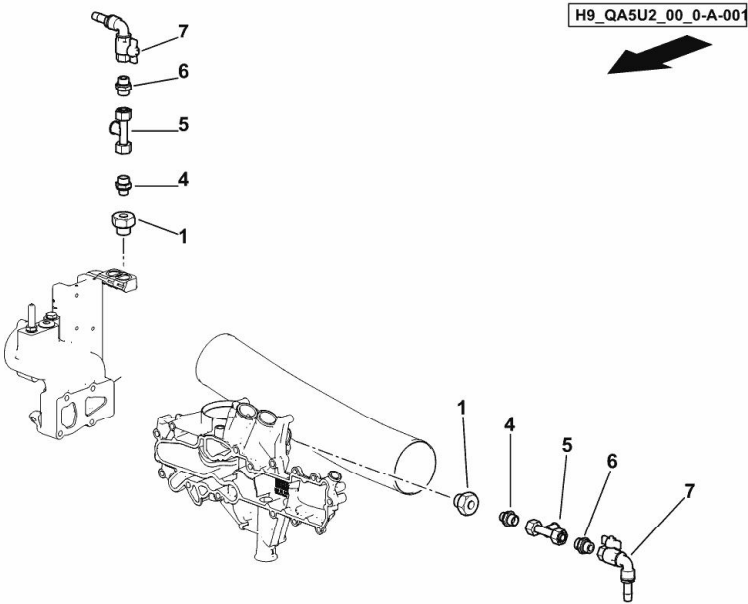


PARTS SET - ENGINE MOUNTING

Fig.	P/n	QTY	Name
------	-----	-----	------

Notes:
[C 7205]

1	16061890	2	vent
4	16064263	2	pipe fitting m 22 p.1.5 / 3.8"
5	0.019.9138.3	2	tube
6	16064262	2	pipe fitting m 22 p.1.5 / 1.2"
7	0.019.4734.4	2	valve

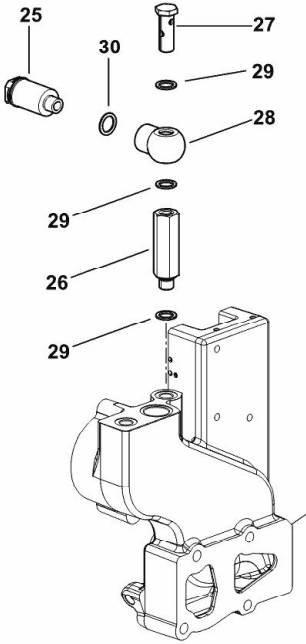


PARTS SET - ENGINE MOUNTING

Fig.	P/n	QTY	Name
------	-----	-----	------

Notes:
[C 7205]

25	16064285	1	connection
26	2.3249.800.2	1	pipe union m14x1.5
27	2.3249.799.2	1	pipe union m14x1.5
28	2.3249.694.2	1	pipe fitting
29	2.1560.010.0	3	gasket 14.2 x 20
30	2.1560.012.0	1	gasket 16.2 x 22



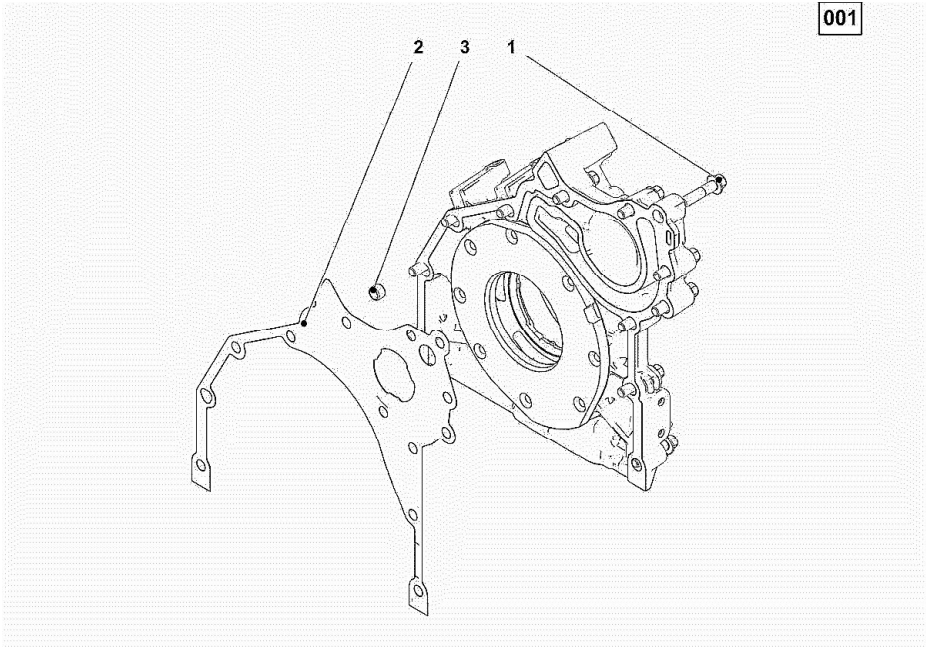
H9_Z75A0_01_0-D-001

FASTENINGS

Fig.	P/n	QTY	Name
------	-----	-----	------

Notes:
[C 7205]

Engine serial number:
11326622 11326623 11383709 11383710 11383711 11387288 11441329 11493627 11493628 11493629 11493630
11493631 11493632 11493633 11493634 11493635 11493636 11493637 11493638 11493639 11493640 11493641
11493642 11493643 11493644 11493645 11493646 11504363



1	01143362	12	screw 5 Nm, 30 Nm. consult workshop manual EN 1662 -F-M8X35-10.9-A4C
2	04504325	1	gasket
3	01181406	1	bushing H 2341 -B11X8-FE/ZN12C*

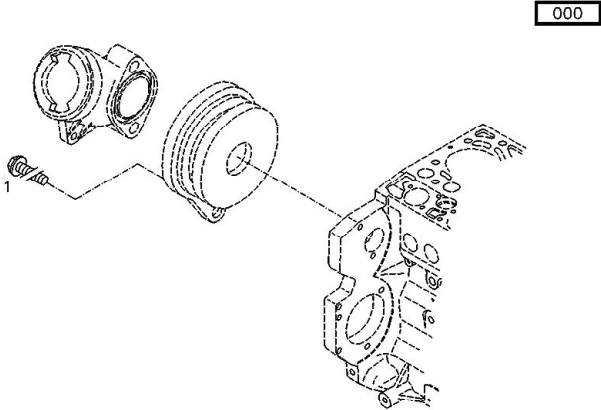
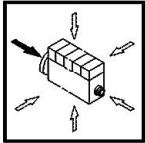
FASTENINGS

Fig.	P/n	QTY	Name
------	-----	-----	------

Notes:
[C 7205]

Engine serial number:
11326622 11326623 11383709 11383710 11383711 11387288 11441329 11493627 11493628 11493629 11493630
11493631 11493632 11493633 11493634 11493635 11493636 11493637 11493638 11493639 11493640 11493641
11493642 11493643 11493644 11493645 11493646 11504363

1	01181438	1	screw 30 Nm EN 1662 -F-M8X55-10.9-ZNAL-A
2	01181437	3	screw 20 Nm EN 1662 -F-M8X45-10.9-ZNAL-A



Section: B0 - ENGINE
SERIE GUARNIZIONI

Ref: B0.01.4

Fig.	P/n	QTY	Name
------	-----	-----	------

Notes:
[C 7205]

Engine serial number:
11326622 11326623 11383709 11383710 11383711 11387288 11441329 11493627 11493628 11493629 11493630
11493631 11493632 11493633 11493634 11493635 11493636 11493637 11493638 11493639 11493640 11493641
11493642 11493643 11493644 11493645 11493646 11504363

1	02937844	1	gasket set THE KIT DOES NOT CONTAIN ALL THE GASKETS: SEE SM 0199-99-9449
---	----------	---	--

