

SM018
FBM10/18.2-BE1

SERVICE MANUAL

XXAM **FORKLIFT TRUCK**

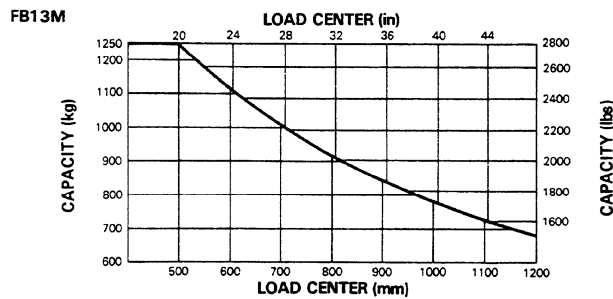
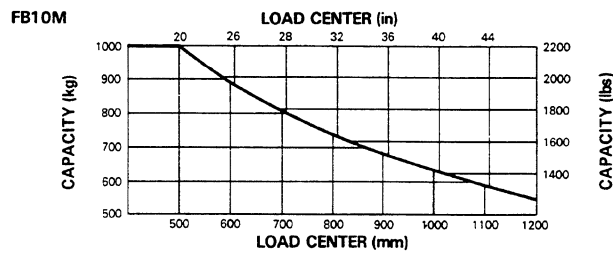
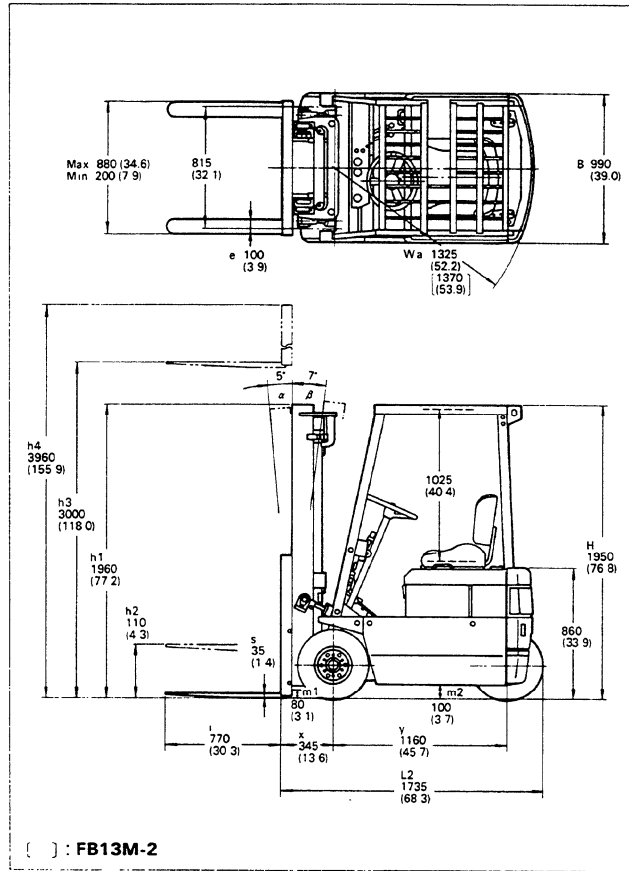
FB10M,13M-2 s/n 2001 and up
FB15M,18M-2 s/n 3001 and up

KOMATSU FORKLIFT USA

GENERAL AND SPECIFICATIONS

OVERALL DIMENSIONS AND SPECIFICATIONS

**FB10M-2
FB13M-2**



Capacities shown are for trucks equipped with 2-stage view mast up through 3500mm (138in.) maximum fork height, 880mm (34.6in.) carriage, 770mm (30.3in.) forks. Contact your distributor or dealer for capacity information with other equipment

GENERAL AND SPECIFICATIONS

FB10M-2 FB13M-2

Characteristics	1	Manufacturer		KOMATSU		KOMATSU	
	2	Model	Manufacturer's designation	FB10M-2		FB13M-2	
	3	Capacity	kg (lbs)	1000 (2,000)		1250 (2,500)	
	4	Load Center	mm (in)	500 (24)		500 (24)	
	5	Power Type		Electric		Electric	
	6	Operator Type	Driver Standing, Sitting	Sitting		Sitting	
	7	Tire Type	V-Solid L-pneumatic	L/L		L/L	
	8	Wheels (*=driven)	Number front/rear	2*/1		2*/1	
Dimensions	9	Lift	h3	Max. Fork Height	mm (in)	3000 (118)	
	10		h2	Free Lift	mm (in)	110 (4.3)	
	11		h5				
	13	Forks	s. e. i.	Thickness x Width x Length	mm (in)	35x100x770 (1.4x3.9x30.3)	
	14	Tilting Angle	α / β	Forward/Backward		5/7	
	15	Overall Dimensions	L2	Length to face of forks	mm (in)	1735 (68.3)	
	16		B	Width	mm (in)	990 (39.0)	
	17		h1	Height, Mast lowered	mm (in)	1960 (77.2)	
	18		h4	Height, Mast extended	mm (in)	3960 (155.9)	
	19		h6	Height, Overhead Guard	mm (in)	1950 (76.8)	
	20		h7		mm (in)	925 (36.4)	
	21	Turning Radius	Wa	Outside	mm (in)	1325 (52.2)	
22	Load Distance	X	From Center of front axle	mm (in)	345 (13.6)		
23	Right Angle Stacking Aisle		Plus Load Length	mm (in)	1670 (65.7)		
Performance	24	Speeds	Travel	Loaded/Unloaded	km/h (mph)	12/14 (7.5/8.7)	
	25		Lifting	Loaded/Unloaded	mm/s (fpm)	320/460 (63/91) 290/440 (57/87)	
	26		Lowering	Loaded/Unloaded	mm/s (fpm)	450/550 (89/108)	
	28	Drawbar Pull	3-minute rating		N (lbs)	9410 (2,120) 8730 (1,960) 9030 (2,030) 8430 (1,900)	
	29	Gradeability	Loaded/Unloaded	3-minute rating	%	25/40 25/38 23/35 22/33	
Weights	32	Service Weight	Including Battery		kg (lbs)	2270 (5,000) 2520 (5,560)	
	33	Axle Loading	Loaded	front/rear	kg (lbs)	2920/ 350 (6,440/ 770) 3330/ 440 (7,340/ 970)	
	34		Unloaded	front/rear	kg (lbs)	1190/1080 (2,620/2,380) 1160/1360 (2,560/3,000)	
Chassis & Wheels	35		Number	front/rear		2/1	
	36	Tire	Size	front		18x7-8-10PR	
	37		Size	rear		18x7-8-10PR	
	38	Wheelbase	y		mm (in)	1160 (45.7)	
	39	Tread	front		mm (in)	815 (32.1)	
	40	Ground Clearance	m1	Lowest point	mm (in)	80 (3.1)	
	41		m2	Center of frame	mm (in)	100 (3.9)	
	42	Brakes	Service			Hydraulic	
	43		Parking			Mechanical	
	Drive	45	Battery (optional)	Voltage/Capacity (5-hr-rate)	V/AH	48/280 24/600 48/280 24/600	
46		Weight		kg (lbs)	570 (1,257) 570 (1,257)		
47		Electric Motors	Drive Motor, 1-hour rating	kW	2.7x2 2.4x2 2.7x2 2.4x2		
48			Dump Motor 5-minute rating	kW	6.6 5.5 6.6 5.5		
54		Speed Control	Drive Motor Control			SCR SCR	
57	Hydraulic	Max. Pressure		bar (psi)	170(2,450) 170(2,450)		

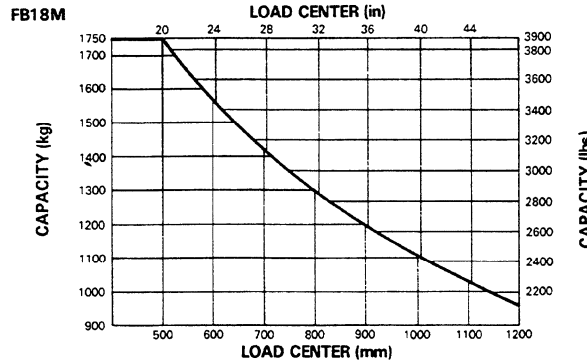
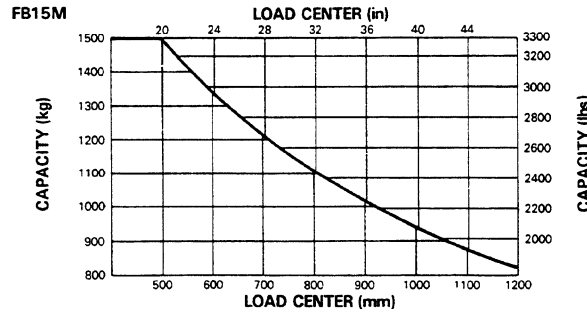
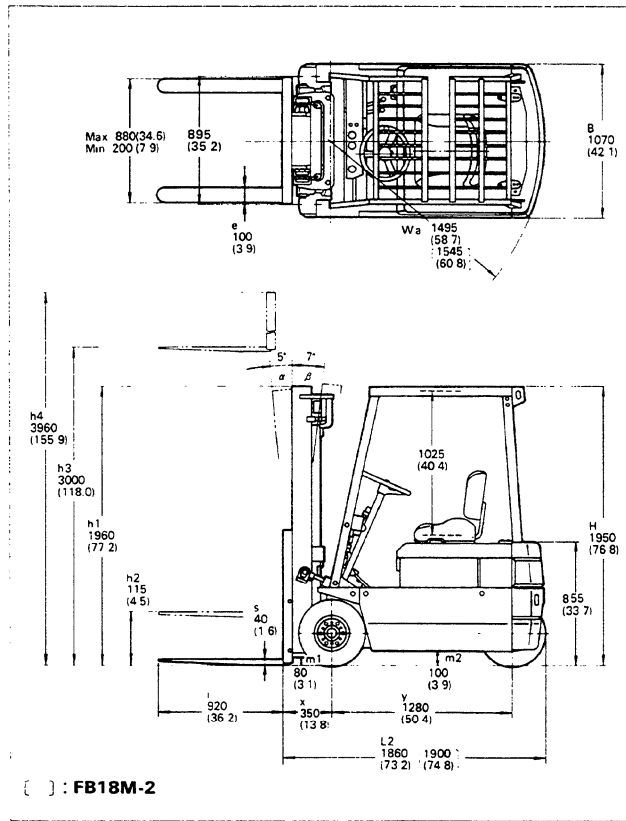
ANSI AND INSURANCE CLASSIFICATION

Overhead guard on standard truck meets all applicable mandatory requirements of Part II-ANSI-B 56.1 1969-1975 Safety Standard for Powered Industrial Trucks.

Most values shown in this publication are rounded. Therefore, direct conversion between metric and imperial may be slightly different from those shown. Specifications are subject to improvements and changes without notice.

GENERAL AND SPECIFICATIONS

**FB15M-2
FB18M-2**



Capacities shown are for trucks equipped with 2-stage view mast up through 3500mm (138in.) maximum fork height, 880mm (34.6in.) carriage, 920mm (36.2in.) forks. Contact your distributor or dealer for capacity information with other equipment

GENERAL AND SPECIFICATIONS

FB15M-2 FB18M-2

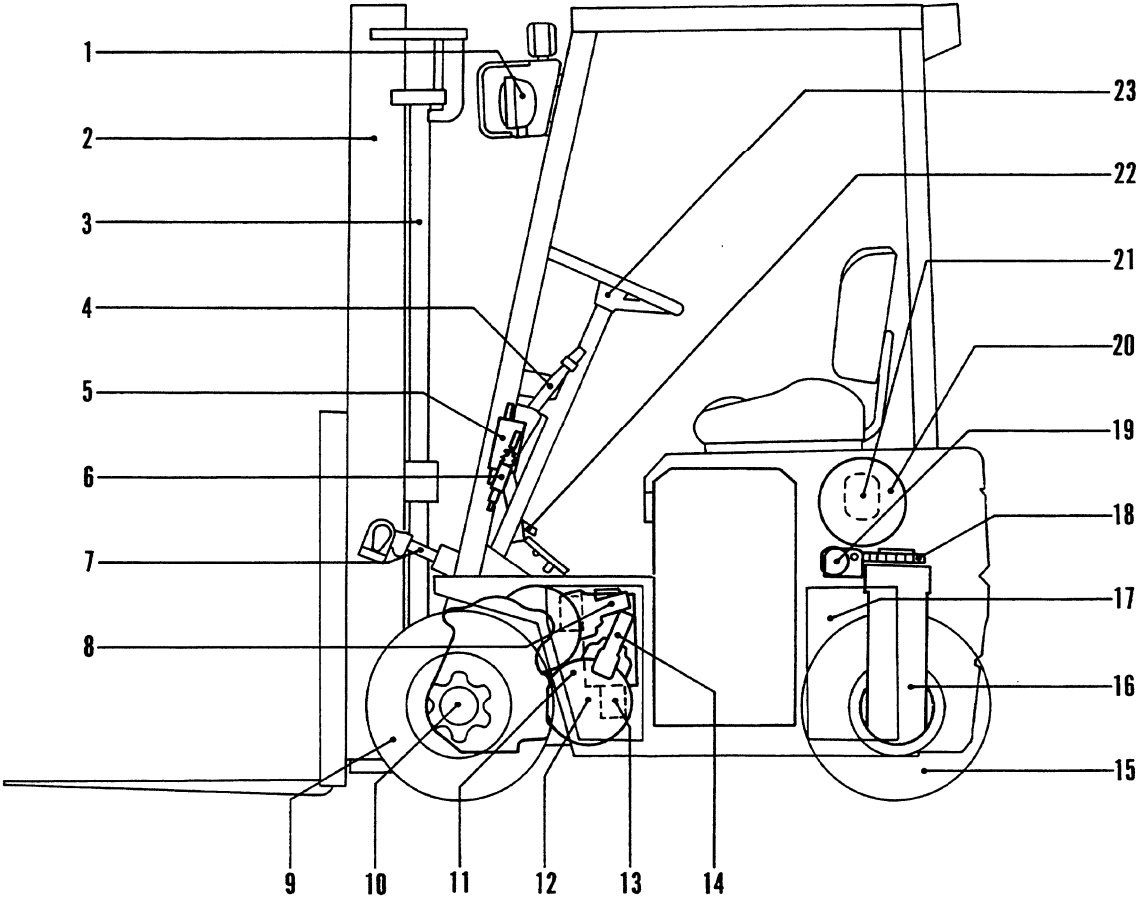
Characteristics	1	Manufacturer		KOMATSU	KOMATSU				
	2	Model	Manufacturer's designation	FB15M-2	FB18M-2				
	3	Capacity	Q	kg (lbs)	1500 (3,000)	1750 (3,500)			
	4	Load Center	C	mm (in)	500 (24)	500 (24)			
	5	Power Type			Electric	Electric			
	6	Operator Type	Driver Standing, Sitting		Sitting	Sitting			
	7	Tire Type	V-Solid L-pneumatic		L/L	L/L			
	8	Wheels (*=driven)	Number front/rear		2*/1	2*/1			
Dimensions	9	h3	Max. Fork Height	mm (in)	3000 (118)	3000 (118)			
	10	Lift	h2	Free Lift	mm (in)	115 (4.5)			
	11		h5						
	13		Forks	s. e. i. Thickness x Width x Lengt	mm (in)	40x100x920 (1.6x3.9x36.2)	43x100x920 (1.7x3.9x36.2)		
	14	Tilting Angle	α / β	Forward/Backward		5/7			
	15	Overall Dimensions	L2	Length to face of forks	mm (in)	1860 (73.2)	1900 (74.8)		
	16		B	Width	mm (in)	1070 (42.1)	1070 (42.1)		
	17		h1	Height, Mast lowered	mm (in)	1960 (77.2)	1960 (77.2)		
	18		h4	Height, Mast extended	mm (in)	3960 (155.9)	3960 (155.9)		
	19		h6	Height, Overhead Guard	mm (in)	1950 (76.8)	1950 (76.8)		
	20		h7		mm (in)	925 (36.4)	925 (36.4)		
	21		Turning Radius	Wa	Outside	mm (in)	1495 (58.9)	1545 (60.8)	
	22	Load Distance	X	From Center of front axle	mm (in)	350 (13.8)	355 (14.0)		
23	Right Angle Stacking Aisle		Plus Load Length	mm (in)	1845 (72.6)	1900 (74.8)			
Performance	24	Speeds	Travel	Loaded/Unloaded	km/h (mph)	11/13 (6.8/8.1)	10.5/12.5 (6.5/7.8)		
	25		Lifting	Loaded/Unloaded	mm/s (fpm)	280/460 (55/91)	250/440 (49/87)	260/450 (51/89)	230/430 (45/85)
	26		Lowering	Loaded/Unloaded	mm/s (fpm)	450/550 (89/108)		450/550 (89/108)	
	28	Drawbar Pull	3-minute rating		N (lbs)	9020 (2,030)	8430 (1,900)	9120 (2,050)	8430 (1,900)
	29	Gradeability	Loaded/Unloaded	3-minute rating	%	20/30	19/30	17/28	16/27
Weights	32	Service Weight	Including Battery		kg (lbs)	2770 (6,110)	2970 (6,550)		
	33	Axle Loading	Loaded	front/rear	kg (lbs)	3770/ 500 (8,310/1,100)	4170/ 550 (9,190/1,210)		
	34		Unloaded	front/rear	kg (lbs)	1270/1500 (2,800/3,310)	1250/1720 (2,760/3,790)		
Chassis & Wheels	35	36	Tire	Number front/rear		2/1	2/1		
	36	37	Size front			18x7-8-14PR	18x7-8-16PR		
	37	38	Size rear			18x7-8-14PR	18x7-8-16PR		
	38	Wheelbase	y		mm (in)	1280 (50.4)	1280 (50.4)		
	39	Tread	front		mm (in)	895 (35.2)	895 (35.2)		
	40	Ground Clearance	m1	Lowest point	mm (in)	80 (3.1)	80 (3.1)		
	41		m2	Center of frame	mm (in)	100 (3.9)	100 (3.9)		
	42	Brakes	Service			Hydraulic	Hydraulic		
	43	Parking				Mechanical	Mechanical		
	Drive	45	Battery (optional)	Voltage/Capacity (5-hr-rate)	V/AH	48/360	24/800	48/390	24/800
46		Weight		kg (lbs)	710 (1,565)		710 (1,565)		
47		Electric Motors	Drive Motor, 1-hour rating	kW	2.7x2	2.4x2	2.7x2	2.4x2	
48			Dump Motor 5-minute rating	kW	6.6	5.5	6.6	5.5	
54		Speed Control	Drive Motor Control			SCR	SCR		
57	Hydraulic	Max. Pressure		bar (psi)	170(2,450)		170(2,450)		

ANSI AND INSURANCE CLASSIFICATION

Overhead guard on standard truck meets all applicable mandatory requirements of Part II-ANSI-B 56.1 1969-1975 Safety Standard for Powered Industrial Trucks.

Most values shown in this publication are rounded. Therefore, direct conversion between metric and imperial may be slightly different from those shown. Specifications are subject to improvements and changes without notice.

GENERAL LOCATIONS



REMOVAL AND INSTALLATION

	Installation Removal	Disassembly Assembly	Inspection Adjustment
1. Electrical components	10 – 8	–	–
2. Mast	10 – 6	20 – 36	20 – 36
3. Lift cylinder	10 – 6	20 – 28	20 – 28
4. Parking brake	10 – 9	–	10 – 16
5. Control valve	10 – 12	20 – 34	20 – 35
6. Master cylinder	10 – 10	–	–
7. Tilt cylinder	10 – 6	20 – 30	20 – 31
8. Wheel brake	10 – 11	20 – 12	20 – 13
9. Front wheels	10 – 9	–	–
10. Transfer	10 – 9	20 – 2	20 – 7
11. Contactor board	10 – 8	–	–
12. Drive motor	10 – 8	–	–
13. Power steering pump	10 – 8	–	10 – 13
14. Power steering motor	10 – 8	–	–
15. Rear wheels	10 – 9	10 – 9	–
16. Rear axle	10 – 9	20 – 8	20 – 8
17. Chopper board	10 – 8	–	–
18. Steering chain	10 – 9	20 – 10	20 – 10
19. Power steering cylinder	10 – 9	20 – 32	20 – 33
20. Pump motor	10 – 8	–	–
21. Hydraulic pump	10 – 8	–	10 – 13
22. Accelerator	10 – 14	–	10 – 14
23. Steering gear box	10 – 12	20 – 14	20 – 20