

# SERVICE MANUAL

AX20 SERIES FORKLIFT TRUCKS

Federal Environmental Protection Agency (EPA) Emission-Control Compliant  
S/N 670001A~

FG15/18ST(LS)-17

FG15HC-17

FG15/18HT(LS)-17

# AX20



## WARNING

Read and observe all warnings on this unit before operating it.

**DO NOT** operate this equipment unless all factory-installed guards and shields are properly secured in place.

ISSUED: DECEMBER 2007

**KOMATSU**  
Komatsu Forklift USA, Inc.

The information and specifications contained herein were accurate at the time of publication, but may change without notice as required for product improvements. Neither Komatsu Forklift USA, Inc., nor its parent company nor any of its subsidiaries will be held responsible for damages due to misuse or inappropriate use of its products.

Requests for information, comments and other inquiries should be sent to:

Komatsu Forklift USA, Inc.  
14481 Lochridge Blvd., Bldg. #2  
Covington, Georgia 30014-4908

Voice phone: (770) 385-4815  
Fax phone: (770) 385-4838

© Copyright 2006, Komatsu Forklift USA, Inc. All rights reserved. No part of this document may be photocopied or reproduced in any way without prior written consent of Komatsu Forklift USA, Inc.

# CONTENTS

	Page No.
<b>INTRODUCTION</b> .....	<b>7</b>
<b>APPLICABLE AX20 “EPA” LIFT TRUCK MODELS</b> .....	<b>9</b>
<b>FEDERAL EPA EMISSION CONTROL STATEMENTS</b> .....	<b>11</b>
<b>1. SAFETY</b>	
1.1 SAFETY MANAGEMENT .....	1-2
1.2 SAFE TRAVEL .....	1-7
1.3 LOADING OPERATIONS .....	1-15
1.4 STOPPING AND PARKING .....	1-21
1.5 INSPECTION AND MAINTENANCE .....	1-22
1.6 STRUCTURE AND STABILITY OF THE LIFT TRUCK .....	1-29
<b>2. GENERAL INFORMATION AND SPECIFICATIONS</b>	
2.1 SPECIFICATIONS - MAST DATA & FEATURES - INDOOR & OUTDOOR TRUCKS ...	2-2
2.2 TRUCK DATA - PNEUMATIC TIRE LIFT TRUCKS (OUTDOOR) .....	2-4
2.3 TRUCK DATA - CUSHION TIRE LIFT TRUCKS .....	2-6
2.4 PERIODIC REPLACEMENT OF CONSUMABLE PARTS .....	2-8
2.5 STANDARD TIGHTENING TORQUE FOR PIPE JOINTS .....	2-9
2.6 STANDARD TIGHTENING TORQUE FOR BOLTS .....	2-10
<b>3. SERVICE DATA</b>	
3.1 GASOLINE ENGINE TRUCKS - PNEUMATIC .....	3-2
3.2 GASOLINE ENGINE LIFT TRUCKS - CUSHION .....	3-4
<b>4. TESTING, ADJUSTING AND MEASURING</b>	
4.1 ADJUST IGNITION TIMING .....	4-2
4.2 ADJUST SPARK PLUG GAP .....	4-3
4.3 ADJUST VALVE CLEARANCE .....	4-3
4.4 ADJUST FAN BELT TENSION .....	4-4
4.5 MEASURE ENGINE CYLINDER COMPRESSION .....	4-4
4.6 ADJUST THE PARKING BRAKE LEVER .....	4-5
4.7 MEASURE HYDRAULIC DRIFT ON LIFT & TILT CYLINDERS .....	4-5
4.8 ADJUST THE ACCELERATOR PEDAL .....	4-6
4.9 THROTTLE POSITION SENSOR SYSTEM .....	4-7
4.10 ACCELERATOR PEDAL POSITION SENSOR .....	4-8
4.11 CHECK BRAKE FLUID .....	4-9
4.12 MEASURE BRAKE STOPPING DISTANCE (BRAKING EFFECT) .....	4-10
4.13 ADJUST THE STOP LAMP SWITCH .....	4-10
4.14 ADJUST THE INCHING/BRAKE PEDAL (TORQFLOW TRUCKS) .....	4-10
4.14.1 Brake Pedal .....	4-10
4.14.2 Inching Pedal .....	4-10
4.14.3 Inching Pedal/Brake Pedal Interconnected Travel .....	4-11
4.15 CHECK TORQFLOW CLUTCH ACTUATION PRESSURE .....	4-13
4.16 CHECK TORQUE CONVERTER STALL SPEED .....	4-13
4.17 TESTING SPECIFIC GRAVITY OF BATTERY ELECTROLYTE .....	4-14
4.18 CHECK TIRES AND ADJUST PNEUMATIC TIRE PRESSURE .....	4-15
4.19 MEASURING MINIMUM LEFT AND RIGHT TURNING RADIUS .....	4-15
4.20 MEASURE HYDRAULIC CONTROL VALVE RELIEF PRESSURE .....	4-16
<b>5. INSPECTION</b>	
5.1 INSPECT ENGINE STARTING OPERATION .....	5-2
5.2 INSPECT ENGINE RUNNING CONDITION .....	5-2

5.3	INSPECT AIR CLEANER ASSEMBLY . . . . .	5-2
5.3.1	Cleaning the Filter Element . . . . .	5-2
5.4	INSPECT FOR LOOSE CYLINDER HEAD MOUNTING BOLTS & RE-TORQUE . . . . .	5-3
5.5	INSPECT ENGINE MOUNTS . . . . .	5-3
5.6	INSPECT THE ENGINE LUBRICATING SYSTEM . . . . .	5-3
5.7	INSPECT ENGINE FUEL SYSTEM . . . . .	5-3
5.8	INSPECT LPG VAPORIZER FOR TAR BUILDUP (EVERY MONTH) . . . . .	5-4
5.9	INSPECT THE BLOW-BY GAS RECIRCULATION SYSTEM . . . . .	5-4
5.10	INSPECT COOLING SYSTEM AND RADIATOR . . . . .	5-5
5.11	INSPECT CHARGING SYSTEM WIRING . . . . .	5-5
5.12	INSPECT LPG VAPORIZER FOR TAR BUILDUP (EVERY MONTH) . . . . .	5-5
5.13	INSPECT THE BLOW-BY GAS RECIRCULATION SYSTEM . . . . .	5-6
5.14	INSPECT COOLING SYSTEM AND RADIATOR . . . . .	5-7
5.15	INSPECT CHARGING SYSTEM WIRING . . . . .	5-7
5.16	INSPECT STEERING . . . . .	5-8
5.17	INSPECT STEERING WHEEL . . . . .	5-8
5.18	INSPECT THE POWER STEERING SYSTEM . . . . .	5-8
5.18.1	Power Steering Oil Pressure . . . . .	5-8
5.19	INSPECT BRAKE SYSTEM RODS, CABLES AND LINKS . . . . .	5-8
5.20	INSPECT BRAKE PIPING AND CONNECTIONS . . . . .	5-9
5.21	INSPECT BRAKE MASTER AND WHEEL CYLINDERS . . . . .	5-10
5.22	INSPECT BRAKE SHOES AND ASSOCIATED PARTS . . . . .	5-10
5.23	INSPECT BRAKE DRUMS . . . . .	5-10
5.24	INSPECT BRAKE BACKING PLATES . . . . .	5-11
5.25	INSPECT LOAD FORKS . . . . .	5-11
5.26	INSPECT MAST . . . . .	5-11
5.27	INSPECT FORK CARRIAGE . . . . .	5-12
5.28	INSPECT LIFT CHAINS . . . . .	5-12
5.29	INSPECT CHAIN WHEELS . . . . .	5-13
5.30	INSPECT ATTACHMENTS . . . . .	5-13
5.31	INSPECT HYDRAULIC TANK . . . . .	5-13
5.32	INSPECT CHASSIS AND ATTACHMENT PIPING . . . . .	5-13
5.33	INSPECT HYDRAULIC PUMP . . . . .	5-13
5.34	INSPECT LIFT CYLINDER . . . . .	5-13
5.35	INSPECT TILT CYLINDERS . . . . .	5-13
5.36	INSPECT ATTACHMENT CYLINDERS (IF EQUIPPED) . . . . .	5-14
5.37	INSPECT LIFT TRUCK CHASSIS AND FRAME . . . . .	5-14
5.38	INSPECT CAB (IF EQUIPPED) . . . . .	5-14
5.39	INSPECT THE OPERATOR'S SEAT . . . . .	5-14
5.39.1	Vehicle Controller . . . . .	5-14
5.39.2	Tusk Operator Present System TOPS) . . . . .	5-14
5.39.3	Controller Troubleshooting . . . . .	5-16
5.40	INSPECT EQUIPMENT USED FOR ACCESSING THE LIFT TRUCK . . . . .	5-18
5.41	INSPECT DISPLAY PANEL . . . . .	5-18
5.42	INSPECT OVERHEAD GUARD . . . . .	5-18
5.43	INSPECT LIGHTS, GAUGES AND WARNING DEVICES . . . . .	5-18
5.44	INSPECT REAR VIEW MIRROR AND REFLECTORS . . . . .	5-18
<b>6.</b>	<b>MAINTENANCE OPERATIONS</b>	
6.1	LUBRICANT LIST . . . . .	6-2
6.2	CHANGE ENGINE OIL AND FILTER - GASOLINE/LP ENGINES . . . . .	6-4
6.3	DIFFERENTIAL CASE . . . . .	6-5
6.3.1	Checking Differential Oil Level . . . . .	6-5
6.3.2	Changing Differential Oil . . . . .	6-5
6.4	TORQFLOW TRANSMISSION CASE . . . . .	6-5

6.4.1	Checking TORQFLOW Transmission Fluid Level. . . . .	6-6
6.4.2	Changing TORQFLOW Transmission Fluid and Cleaning the Strainer . . . . .	6-6
6.5	CHANGE OIL IN HYDRAULIC TANK . . . . .	6-7
6.6	REPLACE THE FUEL FILTER. . . . .	6-8
6.7	CLEAN AND/OR REPLACING AIR CLEANER ELEMENT . . . . .	6-8

**7. REMOVAL, DISASSEMBLY, ASSEMBLY, INSTALLATION**

7.1	OVERALL ASSEMBLY DRAWING . . . . .	7-2
7.2	WEIGHT TABLE - COMPONENT ASSEMBLIES AND PARTS . . . . .	7-4
7.3	ENGINE . . . . .	7-5
7.3.1	Engine Removal . . . . .	7-5
7.3.2	Engine Disassembly And Assembly . . . . .	7-6
7.3.3	Engine Installation. . . . .	7-6
7.4	TRANSMISSION AND DRIVE AXLE. . . . .	7-8
7.4.1	Torque Converter, Transmission, Drive Axle Removal . . . . .	7-8
7.5	INSTALL TORQUE CONVERTER. . . . .	7-10
7.6	INSTALL TRANSMISSION AND DRIVE AXLE . . . . .	7-11
7.7	INSTALL PEDAL ASSEMBLY & BRAKE PIPING . . . . .	7-11
7.8	BRAKE MASTER CYLINDER . . . . .	7-11
7.8.1	Disassemble Brake Master Cylinder . . . . .	7-13
7.8.2	Assemble Brake Master Cylinder . . . . .	7-14
7.9	BLEED AIR FROM BRAKE SYSTEM LINES . . . . .	7-15
7.10	STEERING AXLE. . . . .	7-17
7.10.1	STEERING AXLE SPECIFICATIONS. . . . .	7-17
7.10.2	Steering Axle Removal . . . . .	7-17
7.10.3	Install STEERING AXLE . . . . .	7-21
7.11	STEERING AXLE - LUBRICATION AND ADJUSTMENTS . . . . .	7-22
7.11.1	Steering Axle Lubrication . . . . .	7-22
7.11.2	Hub Bearing Preload Adjustment . . . . .	7-22
7.11.3	Toe-in Specification - Cushion Tire Truck . . . . .	7-22
7.11.4	Turning Angle Adjustment. . . . .	7-23
7.12	POWER STEERING VALVE (OSPC) . . . . .	7-26
7.13	POWER STEERING VALVE - TROUBLESHOOTING CHART . . . . .	7-27
7.13.1	Remove Power Steering Pump. . . . .	7-29
7.13.2	Disassemble Power Steering Valve . . . . .	7-29
7.13.3	Assemble Power Steering Valve. . . . .	7-36
7.13.4	Install Power Steering Valve . . . . .	7-48
7.14	POWER STEERING CYLINDER. . . . .	7-49
7.15	WHEEL BRAKE . . . . .	7-50
7.15.1	Wheel Brake Removal . . . . .	7-50
7.15.2	Wheel Brake Disassembly . . . . .	7-51
7.15.3	Assemble Wheel Brake. . . . .	7-53
7.15.4	Axle Shaft And Front Wheel Installation . . . . .	7-55
7.16	DRIVE AXLE . . . . .	7-56
7.17	DIFFERENTIAL . . . . .	7-60
7.17.1	Dissassemble Torqflow Transmission Differential . . . . .	7-61
7.17.2	Assemble Torqflow Transmission Differential. . . . .	7-63
7.18	ADJUST RING GEAR BACKLASH . . . . .	7-67
7.19	TORQFLOW TRANSMISSION W/ TORQUE CONVERTER. . . . .	7-72
7.19.1	Explanation Of Operation Of Transmission Hydraulic Circuit . . . . .	7-76
7.20	DISASSEMBLE TORQFLOW TRANSMISSION . . . . .	7-81
7.21	TORQUE CONVERTER DISASSEMBLY / ASSEMBLY . . . . .	7-83
7.21.1	Disassemble Torque Converter . . . . .	7-83
7.21.2	Assemble Torque Converter . . . . .	7-83
7.22	TORQFLOW TRANSMISSION DISASSEMBLY / ASSEMBLY . . . . .	7-84

7.22.1	Disassemble Torqflow Transmission Oil Pump	7-84
7.22.2	Assemble Torqflow Transmission Oil Pump	7-84
7.22.3	Remove Counter Shaft	7-85
7.22.4	Disassemble Input Shaft	7-86
7.22.5	Assemble Input Shaft	7-86
7.22.6	Disassemble Main Shaft And Clutch Drum	7-87
7.22.7	Assemble Main Shaft And Clutch Drum	7-87
7.22.8	Assemble Forward And Reverse Gear	7-88
7.22.9	Measure Torqflow Transmission - Clutch Pack End Gap	7-89
7.22.10	Disassemble Clutch Return Spring	7-90
7.22.11	Assemble Clutch Return Spring	7-90
7.22.12	Disassemble Output Gear	7-91
7.22.13	Assemble Output Gear	7-91
7.22.14	Remove Oil Filter	7-91
7.22.15	Install Oil Filter	7-91
7.22.16	Remove Transmission Case Magnets	7-92
7.22.17	Install Transmission Case Magnets	7-92
7.23	TORQFLOW TRANSMISSION - CONTROL VALVE	7-94
7.23.1	Disassemble Torqflow Transmission - Control Valve	7-99
7.23.2	Assemble Torqflow Transmission - Control Valve	7-100
7.24	HYDRAULIC CONTROL VALVE	7-103
7.25	HYDRAULIC PUMP	7-104
7.25.1	Disassemble Hydraulic Pump	7-104
7.25.2	Replace Hydraulic Pump Seals	7-106
7.25.3	Replace Front And Rear E-seal And Back-up Ring	7-106
7.25.4	Replace O-ring	7-107
7.25.5	Assemble Hydraulic Pump	7-107
7.26	TILT CYLINDER	7-108
7.26.1	Disassemble Tilt Cylinder	7-108
7.26.2	Inspect Tilt Cylinder Parts	7-109
7.26.3	Assemble Tilt Cylinder	7-110
7.27	REMOVE MAST	7-111
7.28	INSTALL MAST	7-112
7.29	LIFT CYLINDER	7-113
7.29.1	Remove Lift Cylinder	7-113
7.29.2	Install Lift Cylinder	7-113
7.29.3	Disassemble Lift Cylinder	7-114
7.29.4	Assemble Lift Cylinder	7-118
7.30	CYLINDER SEAL SERVICE KITS	7-121
7.30.1	Displacement Design with Piston Seal	7-121
7.30.2	Piston Design with No Downstroke Cushioning	7-123
7.31	SIDESHIFTER	7-125
7.31.1	Replace Cylinder Head O-rings	7-126
7.31.2	Service Cylinder Head	7-138

**8. MASTS**

35/40/50/55/60D-MD SERIES 2-STAGE MASTS	8-2
30/35/40/50/55/60D-MS 2-STAGE MASTS	8-35
30/35/40/50/55/60D-MT 3-STAGE MASTS	8-65

**9. APPENDICES AND ENGINE MANUAL**

APPENDIX 1 - SCHEMATICS	
APPENDIX 2 - HYDRAULIC CIRCUIT DIAGRAM	
APPENDIX 3 - PEDAL ADJUSTMENT DIAGRAM	
APPENDIX 4 - TROUBLESHOOTING DIAGRAM	
SM300 - K21/25 ENGINE SERVICE MANUAL	

# INTRODUCTION

This Service Manual has been developed as an information resource to help the reader learn about, understand, repair and maintain the AX20 Series forklift trucks, and the various equipment, systems, inspections, sensors, diagnostic procedures and diagnostic equipment utilized to maintain, adjust and troubleshoot these systems. Although reference is made to maintenance procedures necessary to perform servicing of this vehicle, you should refer to the applicable *Operation and Maintenance Manual* for these lift trucks for more complete maintenance information.

Komatsu is involved in a concentrated and highly technical program of designing and developing cleaner burning, more efficient and more powerful engines for use in the industrial truck market. As a result, new computerized sensors, systems and diagnostic monitors have been created to make the job of maintaining and repairing these systems simple and easy.

Read this manual carefully, refer to it often and learn the repair, testing and adjustment procedures to the best of your ability. Please note that some illustrations are generic and may not look exactly like your unit in every detail.

Ensure that, when you are working on or around industrial trucks, **Safety is priority Number One**. Read, understand and obey all **WARNINGS** and **CAUTIONS**.

Follow the instructions and procedures presented in this manual when working on these lift trucks and their systems. Damage to the equipment, and possible injury to yourself or others, may result if these procedures are not adhered to carefully.

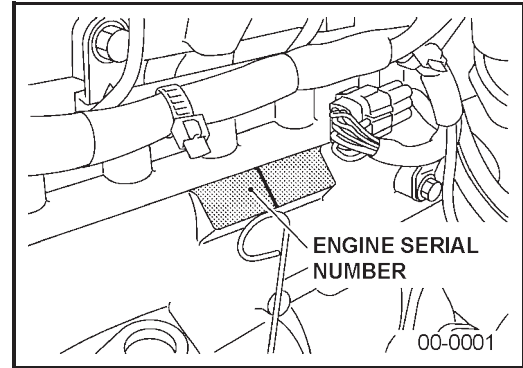
Keep this manual nearby and accessible for use when necessary. If this book becomes dirty, worn or illegible, contact Komatsu for a replacement. The procedures outlined in this manual will be updated periodically. Be sure that you have the latest revision in order to learn the newest information available. Revision dates will be clearly displayed on the lower left hand corner of the cover page.

This will aid in maintaining your equipment in excellent condition and in ensuring that these lift trucks will operate safely at maximum efficiency.

## ENGINE SERIAL NUMBER LOCATION

The K21/K25 engine serial number is stamped on an angled and machined pad on the right side of the engine block in the center just beneath the valve cover.

The machined boss is split vertically by a groove. The Engine Model number is on the left pad and the Engine Serial number is on the right pad.



## NOTICE

**For EPA engine-related troubleshooting, refer to the following manuals:**

- **TM100 - “EPA Engine Training Manual”**
- **SM300 - “K21/K25 Engine Service Manual”**

## APPLICABLE AX20 “EPA” LIFT TRUCK MODELS

<b>Model</b>	<b>Description</b>
FG15HC-17	3,000 lb. capacity, K21 Engine, Clutch Spec, Pneumatic Tire
FG15HT-17	3,000 lb. capacity, K21 Engine, Torqflow Spec, Pneumatic Tire
FG15HTLS-17	3,000 lb. capacity, K21 Engine, Torqflow Spec, LP Special, Pneumatic Tire
FG15ST-17	3,000 lb. capacity, K21 Engine, Torqflow Spec, Cushion Tire
FG15STLS-17	3,000 lb. capacity, K21 Engine, Torqflow Spec, LP Special, Cushion Tire
FG18HT-17	3,500 lb. capacity, K21 Engine, Torqflow Spec, Pneumatic Tire
FG18HTLS-17	3,500 lb. capacity, K21 Engine, Torqflow Spec, LP Special, Pneumatic Tire
FG18ST-17	3,500 lb. capacity, K21 Engine, Torqflow Spec, Cushion Tire
FG18STLS-17	3,500 lb. capacity, K21 Engine, Torqflow Spec, LP Special, Cushion Tire

NOTES