

**KOMATSU**

**Operation & Maintenance Manual**

**FORKLIFT TRUCK**

**FG20/25/30-12**

**FG20H/25H/30H-12**

**FD20/25/30-12**

**FD20H/25H/30H-12**

**FD20J/25J/30J-12**

FGD20/30-12

**Komatsu Forklift Co.,Ltd.**

**⚠ WARNING**

Unsafe use of this lift truck may cause serious injury or death. Operators and maintenance personnel must read this manual and be sure that they understand its contents before operating, inspecting, or carrying out maintenance on this lift truck. This manual should be kept near the lift truck for reference and periodically reviewed by all operators and maintenance personnel who will come into contact with it.

**KOMATSU FORKLIFT**

# 1. FOREWORD

---

This manual provides rules and guidelines which will help you use this lift truck safely and effectively. Always be sure to read and understand this manual thoroughly before operating and performing maintenance.

Some actions involved in operation and maintenance of the lift truck can cause a serious accident if they are not done in the manner described in this manual.



## WARNING

- Improper operation and maintenance of this lift truck can be hazardous and could result in serious injury or death.
- Operators and maintenance personnel should read this manual thoroughly before beginning operation or maintenance.
- Keep this manual handy and have all personnel read it periodically.
- Do not use this lift truck unless you are sure that you have understood the contents completely.
- If this manual has been lost or has become dirty or worn and cannot be read, request a replacement manual from your Komatsu Forklift distributor/dealer.
- Komatsu Forklift delivers lift trucks that comply with (to the best of our knowledge at the time of delivery) all applicable regulations and standards of the country to which they have been shipped. If this lift truck has been purchased in another country or purchased from someone in another country, it may lack certain safety devices and specifications that are necessary for use in your country. If there is any question about whether your product complies with the applicable standards and regulations of your country, consult your Komatsu Forklift distributor/dealer before operating the lift truck.
- Continuing improvements in the design of this lift truck may not be reflected in this manual. Consult Komatsu Forklift or your Komatsu Forklift distributor/dealer for the latest available information on your lift truck or for questions regarding information in this manual.
- Information on safety is given in the SAFETY INFORMATION section on page 0-2 and in chapter 1, the SAFETY section, starting on page 1-1.

## 2. SAFETY INFORMATION


---


Most accidents are caused by a failure to follow fundamental safety rules for the operation and maintenance of lift trucks.


To avoid accidents, read, understand and follow all precautions and warnings in this manual and on the lift truck before operating and performing maintenance.

Do not operate or carry out maintenance of this lift truck unless you are sure that you understand the explanations and procedures completely.

To identify safety messages in this manual and on lift truck labels, the following signal words are used.

 **DANGER** — These safety messages or labels describe precautions that must be taken to avoid a hazard which carries a serious risk of serious injury or death.

 **WARNING** — These safety messages or labels usually describe precautions that must be taken to avoid a hazard which may lead to serious injury or death.

 **CAUTION** — This word is used on safety messages and safety labels for hazards which could result in injury or damage to the lift truck or surrounding property if the hazard is not avoided.

**NOTICE** — This word is used for precautions that may not lead to damage or failure, but which must be taken to avoid actions that could shorten the life of the lift truck.

Safety precautions are described in the SAFETY section starting on page 1-1.

Komatsu Forklift cannot predict every circumstance that might involve a potential hazard in operation and maintenance. Therefore the safety messages in this manual and on the lift truck may not include all possible safety precautions.

If any procedures or actions not specifically recommended or allowed in this manual are used, it is your responsibility to be sure that you and others can do such procedures and actions safely and without damaging the lift truck. If you are unsure about the safety of some procedures, contact your Komatsu Forklift distributor/dealer.

The procedures and precautions given in this manual apply only to intended uses of the lift truck. If you use your lift truck for any unintended use that is not specifically prohibited, you must be sure that it is safe for you and others. In no event should you or others engage in prohibited uses or actions as described in this manual.

## 3. RUNNING IN NEW LIFT TRUCK

### 3.1 RUNNING IN NEW LIFT TRUCK

Your Komatsu Forklift truck has been thoroughly adjusted and tested before shipment. However, operating the lift truck under severe conditions at the beginning can adversely affect performance and shorten the lift truck life. Be sure to run in the lift truck, taking special care concerning the following items.

- Idle the engine for 5 minutes after starting it up.
- Avoid operation with heavy loads or at high speeds.
- Avoid sudden starting or acceleration, unnecessarily abrupt braking and sharp turning, except in the case of emergency.

### 3.2 FIRST MONTH SERVICE (OR INITIAL 200 HOURS SERVICE) FOR NEW LIFT TRUCK

For new lift truck, carry out the following maintenance only after the first month or 200 hours.

Unit	Check items	Remarks
Engine	Change oil	
	Replace oil filter element	
	Drain water from fuel filter	Diesel engine lift truck only
TORQFLOW transmission	Change oil	TORQFLOW lift truck only
	Clean strainer	
Differential	Change oil	
Hydraulic tank	Change oil	
	Replace line filter	
	Clean strainer	
	Clean inside tank	
Other	Tighten all bolts and nuts	Particularly hub nuts, overhead guard mounting bolts, backrest mounting bolts, and operator's seat mounting bolts.

### 3.3 MODEL LINE UP

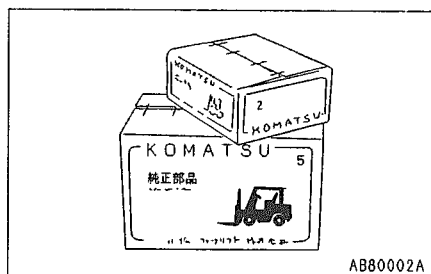
Model	Applicable lift truck No.	Model	Applicable lift truck No.
FG20/25/30-12	538001 and up	FD20/25/30-12	538001 and up
FG20H/25H/30H-12	538001 and up	FD20H/25H/30H-12	538001 and up
		FD20J/25J/30J-12	538001 and up

## 4. WARRANTY AND SERVICE FOR NEW LIFT TRUCK

### 4.1 KOMATSU FORKLIFT GENUINE PARTS

Komatsu Forklift genuine parts are manufactured from the same materials and by the same method as the parts built in the new lift truck.

In the event that the customer uses imitation parts, Komatsu Forklift will not be held accountable for any faults which result from the use of such imitation parts, and the Komatsu Forklift warranty will not be applicable. Always use Komatsu forklift genuine parts when replacing parts.



## 5. LOCATION OF PLATES

### 5.1 LIFT TRUCK SERIAL NO. PLATE POSITION

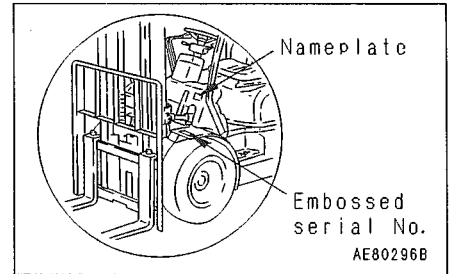
- **Nameplate location:** On front left of dashboard
- **Embossed serial No. location:**

It is stamped on top of the front fender on the left side of the lift truck.

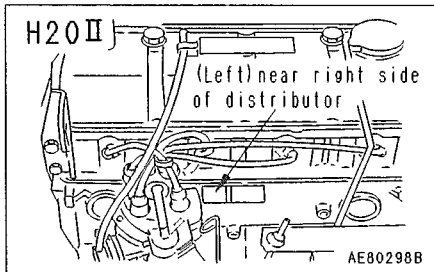
The engine serial number is stamped in the position shown below.

(Left) and (Right) in the diagram are as follows.

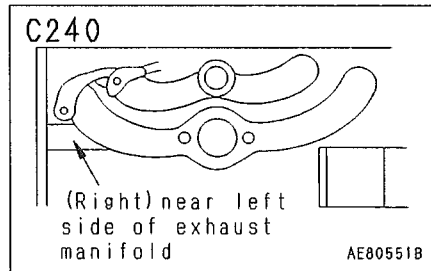
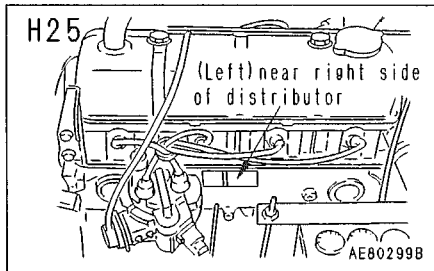
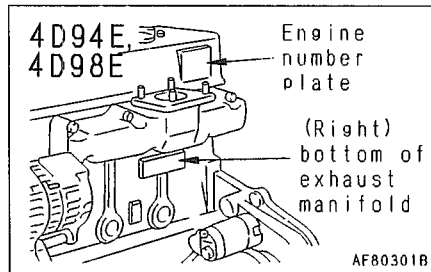
(Left): Left side of engine, (Right): Right side of engine



#### Gasoline engine



#### Diesel engine



- **Contacting**

When contacting a Komatsu Forklift distributor for parts ordering or problem consulting, always give the lift truck serial No. embossed on the lift truck.

## 5. LOCATION OF PLATES

---

### **NOTICE**

**Take care not to damage the embossed serial No..**

### **REMARK**

The serial No. is located on the nameplate.

## 6. CONTENTS

---

<b>1. Foreword</b> .....	0- 1
<b>2. Safety information</b> .....	0- 2
<b>3. Running in new lift truck</b> .....	0- 3
3.1 Running in new lift truck .....	0- 3
3.2 First month service (or initial 200 hours service) for new lift truck .....	0- 3
3.3 Model line up .....	0- 3
<b>4. Warranty and service for new lift truck</b> .....	0- 4
4.1 Komatsu Forklift genuine parts .....	0- 4
<b>5. Location of plates</b> .....	0- 5
5.1 Lift truck serial No. plate position .....	0- 5

### SAFETY

<b>7. Safety management</b> .....	1- 2
<b>8. Safe travel</b> .....	1- 7
<b>9. Loading operations</b> .....	1-17
<b>10. Stopping and parking</b> .....	1-24
<b>11. Inspection and maintenance</b> .....	1-26
<b>12. Structure and stability of the lift truck (to prevent lift truck from tipping!) .....</b>	1-34
<b>13. Safety label sticking positions</b> .....	1-38
13.1 Safety label sticking positions .....	1-38
13.2 Introduction of safety devices (option) .....	1-41

### OPERATION

<b>14. General view</b> .....	2- 2
14.1 General view of lift truck .....	2- 2
14.2 Instruments and controls .....	2- 3
<b>15. Explanation of components</b> .....	2- 4

<b>16. Operation .....</b>	<b>2-18</b>
16.1 Check before operation .....	2-18
16.2 Mounting/dismounting .....	2-30
16.3 Operator's seat position adjustment .....	2-30
16.4 Starting lift truck off .....	2-31
16.5 Starting, inching on slope .....	2-34
16.6 Turning .....	2-35
16.7 Temporary stopping and parking .....	2-36
16.8 Fork spread adjustment .....	2-37
16.9 Load handling operation .....	2-38
16.10 Check after operation .....	2-39
<b>17. Cold weather operation .....</b>	<b>2-40</b>
17.1 Preparations for low temperature .....	2-40
17.2 Precautions after completion of operations .....	2-41
<b>18. Handling in heavy-duty conditions .....</b>	<b>2-42</b>
<b>19. Long-term storage .....</b>	<b>2-43</b>
19.1 Before storage .....	2-43
19.2 During storage .....	2-43
19.3 After storage .....	2-44

## MAINTENANCE

<b>20. Outline of service .....</b>	<b>3- 2</b>
20.1 Suitable oil .....	3- 2
<b>21. Lubricant list .....</b>	<b>3- 4</b>
21.1 Gasoline engine lift truck .....	3- 4
21.2 Diesel engine lift truck .....	3- 5
21.3 Oil and greasing chart (Oil, grease locations and inspection and maintenance intervals) .....	3- 6
<b>22. Service data .....</b>	<b>3- 8</b>
22.1 Service data (Gasoline engine lift truck) .....	3- 8
22.2 Service data (Diesel engine lift truck) .....	3-10
22.3 Torque list .....	3-12
<b>23. Periodic replacement of safety critical parts .....</b>	<b>3-13</b>
<b>24. Maintenance schedule chart .....</b>	<b>3-14</b>

<b>25. Maintenance .....</b>	<b>3-18</b>
25.1 First one month or initial 200 hours service .....	3-18
25.2 Check before operation .....	3-19
25.3 2-weekly/100 hours service .....	3-19
25.4 Monthly/200 hours service .....	3-19
25.5 3-monthly/600 hours service .....	3-31
25.6 6-monthly/1200 hours service .....	3-31
25.7 Yearly/2400 hours service .....	3-38
<b>26. Replacement procedure .....</b>	<b>3-40</b>
26.1 Replacing fuses .....	3-40
26.2 Replacing tires .....	3-41
26.3 Replacing lamps .....	3-42

## **TECHNICAL DATA**

<b>27. Technical data .....</b>	<b>4- 2</b>
---------------------------------	-------------