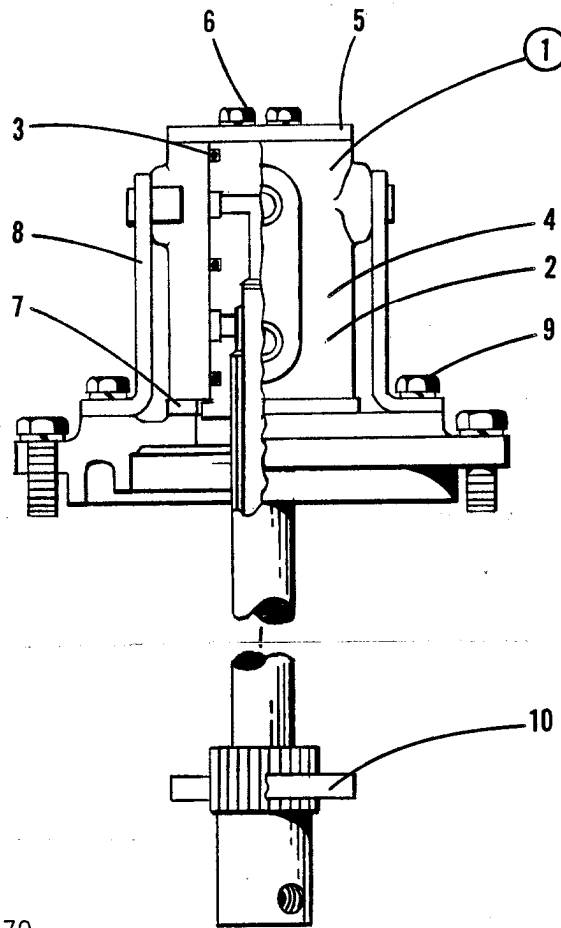


# Parts List

R580

2-10-1.0

## Two Way Rotating Joint Assembly



G1A112, 1J396, 3029, 3370

REF.	PART NO.	QTY.	DESCRIPTION
1	1J1394	1	Two Way Rotating Joint Assembly, Consisting Of The Following Replaceable Parts:
2	1J3	1	Rotor And Manifold Assembly
3	CM285	3	"0" Ring, 1-1/4" I.D.
4	JC3753	1	Housing
5	JC1573	1	End Cap
6	1X2572	2	Capscrew, 5/16" X 3/4"
	1X27	2	Lockwasher, 5/16"
7	1J9	1	Gasket - Felt
8	1J6	2	Bracket, Upper
9	1X3971	4	Locking Capscrew, 3/8" X 1"
10	1J8	1	Anchor
	1J222	2	Bracket
	1X3718	4	Capscrew, 1/2" X 1-3/4"
	1X99	6	Locknut, 1/2"

2-10-1.0



**RTC- 8040 II Series - Master Keysheet**  
**(F7 Prefix On Crane Serial Number)**

**AREA 00                    GENERAL INFORMATION**

\*\*\*\*\*

SM00- 000- 000.00    How To Use This Manual, General Service Instructions, And Safety Procedures

**AREA 01                    RUBBER TIRE LOWER**

\*\*\*\*\*

- SM01- 002- 023.00    Front & Rear Axles, Recondition
- SM01- 004- 010.00    Front Axle, R & I
- SM01- 007- 012.00    Steer Cylinder, Recondition - 4.00 inch (10.2cm) Diameter Case
- SM01- 007- 017.00    Steer Cylinder, Recondition - 4.50 inch (11.4cm) Diameter Case
- SM01- 007- 018.00    Steer Cylinder, R & I
- SM01- 010- 002.00    Steering Pump, Recondition
- SM01- 010- 026.00    Power Steering Pump, R & I
- SM01- 018- 047.00    Transmission, R & I
- SM01- 018- 048.00    Transmission, Recondition
- SM01- 019- 025.00    Transmission Control Unit Diagnostic Manual
- SM01- 022- 004.00    U- Joint Installation - Half Round Yokes
- SM01- 022- 005.00    U- Joint Installation - Full Round Yokes
- SM01- 029- 017.00    Rear Axle & Suspension, R & I
- SM01- 039- 002.00    Vacuum Pressure Relief Valve, Recondition
- SM01- 039- 003.00    Hydraulic System Cleaning Procedure
- SM01- 039- 004.00    Hydraulic Reservoir Filter Assembly, R & I
- SM01- 039- 005.00    Hydraulic Reservoir Filter Assembly, Recondition
- SM01- 043- 001.00    Solenoid Valves, General Recondition
- SM01- 043- 003.00    Outrigger Solenoid Valve Stack, Recondition (Function)
- SM01- 043- 004.00    Four Way Solenoid Valve, Recondition (Outrigger Directional/Steer)
- SM01- 043- 029.00    Combination Steering Control Valve, R & I
- SM01- 043- 030.00    Combination Steering Control Valve, Recondition
- SM01- 043- 031.00    Outrigger Directional Control Valve, R & I
- SM01- 043- 032.00    Outrigger Function Control Valve, R & I
- SM01- 043- 062.00    Hydro- Gas Suspension Control Valve, R & I
- SM01- 044- 018.00    Outrigger Lock Valve Cartridge, R & I
- SM01- 045- 014.00    Outrigger Beam Cylinder, Recondition (Generation 1 - Hydraulic Technologies)
- SM01- 045- 041.00    Outrigger Beam & Beam Cylinder, R & I
- SM01- 045- 050.00    Outrigger Beam Cylinder, Recondition (Generation 2 - Texas Hydraulics)
- SM01- 046- 034.00    Jack Cylinder, Recondition
- SM01- 046- 035.00    Jack Cylinder, R & I
- SM01- 047- 034.00    Relief Valve, Recondition
- SM01- 048- 023.00    Rotating Joint, R & I (Rectangular Collector Ring Cover)
- SM01- 048- 024.00    Rotating Joint, Recondition
- SM01- 048- 028.00    Rotating Joint, R & I (Round Collector Ring Cover)
- SM01- 048- 029.00    Rotating Joint, Recondition
- SM01- 066- 027.00    Battery, R & I
- SM01- 069- 005.00    Tire & Rim, R & I
- SM01- 071- 005.00    Engine Hood, R & I
- SM01- 075- 015.00    Hydraulic Throttle Control Cylinder, Recondition
- SM01- 075- 032.00    Radiator & Transmission/Hydraulic Oil Coolers, R & I
- SM01- 075- 033.00    Alternator, R & I
- SM01- 075- 034.00    Starter, R & I
- SM01- 075- 035.00    Hydraulic Throttle Control Cylinder, R & I
- SM01- 076- 025.00    Collector Ring, R & I (Generation 1)
- SM01- 076- 026.00    Collector Ring, Recondition (Generation 1 - 45 Ring)
- SM01- 076- 031.00    Collector Ring, R & I (Generation 2)
- SM01- 076- 032.00    Collector Ring, Recondition (Generation 2 - 46 Ring)

- SM01- 076- 047.00 Collector Ring, R & I (Generation 3 - 43 Ring)
- SM01- 078- 016.00 Axle Oscillation Lockout Manifold, R & I (Hydro- Gas Suspension)
- SM01- 078- 017.00 Axle Oscillation Cylinder, R & I
- SM01- 078- 018.00 Axle Oscillation Cylinder, Recondition
- SM01- 078- 019.00 Axle Oscillation Accumulator, R & I (Hydro- Gas Suspension)
- SM01- 078- 020.00 Axle Oscillation Accumulator, Recondition (Hydro- Gas Suspension)
- SM01- 078- 027.00 Axle Oscillation Lockout Manifold, Illustrated
- SM01- 079- 011.00 Lower Hydraulic Components, R & I
- SM01- 080- 036.00 Main Hydraulic Pump, R & I
- SM01- 081- 014.00 Hydraulic Pump, Recondition (Multi Section Commercial- Intertech)
- SM01- 085- 004.00 Engine Preheater, Recondition
- SM01- 085- 006.00 Engine Preheater, R & I (Propane)

**AREA 03 UPPER REVOLVING FRAME**

\*\*\*\*\*

- SM03- 001- 067.00 Upper Revolving Frame & Turntable Bearing, R & I
- SM03- 003- 010.00 Main Counterweight, R & I (One Piece Counterweight)
- SM03- 003- 011.00 Main Counterweight, R & I (Three Piece Counterweight)

**AREA 04 VERTICAL SHAFTS**

\*\*\*\*\*

- SM04- 005- 022.00 Swing Brake Assembly, Recondition
- SM04- 010- 026.00 Swing Reduction Unit, R & I (Generation 1)
- SM04- 010- 027.00 Swing Speed Reducer, Recondition (Generation 1)
- SM04- 010- 032.00 Swing Reduction Unit And Brake, R & I (Generation 2 - w/Integral Brake)
- SM04- 010- 033.00 Swing Reduction Unit And Brake, Recondition (Generation 2 - w/Integral Brake)

**AREA 05 HORIZONTAL SHAFTS**

\*\*\*\*\*

- SM05- 006- 021.00 Winch, Troubleshooting (Generation 1 - Braden CH150A, 175A, 185A, CH230)
- SM05- 006- 022.00 Winch, Recondition (Generation 1 - Braden CH150A, 175A, 185A, CH230)
- SM05- 006- 023.00 Winch, R & I (Generation 1 - Braden CH150A, 175A, 185A, CH230)
- SM05- 006- 025.00 Winch, Recondition (Generation 2 - Braden CH210)
- SM05- 006- 026.00 Winch, Troubleshooting (Generation 2 - Braden CH210)
- SM05- 006- 029.00 Winch, R & I (Generation 2 - Braden CH210)
- SM05- 010- 007.00 Drum Rotation Indicator, R & I And Troubleshooting
- SM05- 018- 002.00 Winch Roller, Recondition (Steel Roller)
- SM05- 018- 003.00 Winch Roller, Recondition (Nylon Roller)

**AREA 06 UPPER ENGINE**

\*\*\*\*\*

- SM06- 008- 012.00 Throttle Pedal, R & I
- SM06- 008- 013.00 Throttle Pedal, Recondition
- SM06- 025- 004.00 Diesel Cab Heater, R & I (Generation 1)
- SM06- 025- 005.00 Diesel Cab Heater, Recondition & Troubleshooting (Generation 1)
- SM06- 025- 007.00 Hydraulic Cab Heater, R & I
- SM06- 025- 008.00 Hydraulic Cab Heater, Recondition
- SM06- 025- 009.00 Hydraulic Heater - Troubleshooting
- SM06- 025- 017.00 Diesel Cab Heater, R & I (Generation 2)
- SM06- 025- 018.00 Diesel Cab Heater, Recondition & Troubleshooting (Generation 2)
- SM06- 025- 020.00 Operator's Cab Heater Core, R & I (w/o Air Conditioning)
- SM06- 025- 021.00 Operator's Cab A/C Coil & Heater Core, R & I (w/Air Conditioning)
- SM06- 025- 022.00 A/C Coil And Heater Core, Illustrated
- SM06- 025- 024.00 Upper Cab Heater Water Swivel, R & I And Recondition (Rotating Joint)
- SM06- 047- 000.00 Electrical System Wire Identification Code
- SM06- 047- 096.00 Electrical System Schematic Diagram (Generation 1)

- SM06- 047- 097.00 Electrical System Schematic Diagram (Generation 2)
- SM06- 047- 107.00 Electrical System Schematic Diagram (Generation 3)
- SM06- 047- 108.00 Electrical System Schematic Diagram (Generation 4)

**AREA 07                    HYDRAULIC POWER SUPPLY**

\*\*\*\*\*

- SM07- 000- 122.00 Hydraulic System Schematic Diagram (Generation 1)
- SM07- 000- 123.00 Hydraulic System Schematic Diagram (Generation 2)
- SM07- 000- 124.00 Hydraulic System Schematic Diagram (Generation 3)
- SM07- 001- 018.00 Piston Type Accumulator, Recondition
- SM07- 001- 023.00 Carrier Brakes Accumulator, R & I
- SM07- 001- 024.00 Pilot Control Accumulator, R & I
- SM07- 003- 006.00 Solenoid Valves, General Recondition
- SM07- 004- 011.00 Upper Hydraulic Components, R & I (Upper Frame - Generation 2)
- SM07- 004- 039.00 Upper Hydraulic Components, R & I (Upper Frame - Generation 3)
- SM07- 004- 040.00 Upper Hydraulic Components, R & I (Two Winch Plumbing)
- SM07- 004- 041.00 Upper Hydraulic Components, R & I (Single Winch Plumbing)
- SM07- 005- 052.00 Hydraulic Gear Pump Assembly, Recondition (Hydraulic Heater)
- SM07- 005- 061.00 Hydraulic Heater Gear Pump, R & I
- SM07- 006- 034.00 Swing Motor, Recondition (Generation 1 - Von Ruden)
- SM07- 006- 059.00 Hydraulic Motor, Recondition (Hydraulic Heater)
- SM07- 006- 073.00 Hydraulic Motor, Recondition (Winch)
- SM07- 006- 075.00 Swing Motor & Brake, R & I (Generation 1 - w/o Pressure Reducing Valve)
- SM07- 006- 076.00 Two Speed Valve, Recondition (Winch Motor)
- SM07- 006- 077.00 Winch Motor, R & I (Generation 1 - CH185A w/o Pressure Reducing Valve)
- SM07- 006- 078.00 Hydraulic Heater Motor, R & I
- SM07- 006- 081.00 Swing Motor, Recondition (Generation 2 - Parker)
- SM07- 006- 086.00 Winch Motor, R & I (Generation 2 - CH185A w/Pressure Reducing Valve)
- SM07- 006- 096.00 Winch Motor, R & I (Generation 3 - CH210)
- SM07- 006- 100.00 Swing Motor, R & I (Generation 2 - Parker)
- SM07- 008- 014.00 Winch Counterbalance Valve, Recondition
- SM07- 008- 037.00 Pressure Reducing Valve, Recondition (Winch Or Swing Circuit)
- SM07- 008- 048.00 Foot Control Valve, R & I (Generation 1 - Boom Telescope)
- SM07- 008- 055.00 Controller Valve Assembly, R & I
- SM07- 008- 056.00 Controller Valve Assembly, Recondition (Comm- Intertech)
- SM07- 008- 063.00 Priority Flow Control Valve Assembly, Recondition
- SM07- 008- 066.00 Control Valve, Recondition (Gresen V40)
- SM07- 008- 067.00 Foot Control Valve, Recondition (Generation 1 - Boom Telescope)
- SM07- 008- 076.00 Single Axis Control Valves, R & I
- SM07- 008- 077.00 Single Axis Control Valves, Recondition (Comm- Intertech)
- SM07- 008- 079.00 Upper Hydraulic Components, R & I (Upper Frame - Generation 1)
- SM07- 008- 081.00 Control Valve, Recondition (Winch - Gresen V56)
- SM07- 008- 091.00 Winch Counterbalance Valve, R & I (Cranes w/o Pressure Reducing Valve)
- SM07- 008- 092.00 Winch Pressure Reducing Valve, R & I
- SM07- 008- 096.00 Winch Counterbalance Valve, R & I (Cranes w/Pressure Reducing Valve)
- SM07- 008- 107.00 Controller Valve, Recondition (Monson)
- SM07- 008- 108.00 Single Axis Controller Valve, Recondition (Monson)
- SM07- 008- 111.00 Winch Control Valve, R & I (Generation 1)
- SM07- 008- 113.00 Boom Telescope Foot Control Valve, R & I (Gen 2 - Boom Telescope)
- SM07- 008- 114.00 Boom Telescope Foot Control Valve, Recondition (Gen 2 - Boom Telescope)
- SM07- 008- 118.00 Swing Brake Pedal Valve, Recondition
- SM07- 008- 119.00 Pressure Reducing Valve, R & I (Steering)
- SM07- 008- 127.00 Winch Control Valve, Recondition (Generation 2 - Parker VP170)
- SM07- 008- 129.00 Hydraulic Control Valves, Recondition (Tele/Swing/Boom Hoist Parker VG20)
- SM07- 008- 131.00 Pilot Oil Supply Valve, Recondition
- SM07- 008- 137.00 Swing Brake Pedal Valve, R & I
- SM07- 008- 142.00 Accumulator Charging Valve, Recondition
- SM07- 008- 146.00 Accumulator Charging Valve, R & I

- SM07- 008- 157.00 Winch Control Valve, R & I (Generation 2)
- SM07- 018- 001.00 Hydraulic System Tube Fittings
- SM07- 022- 003.00 Steering Control Valve, Recondition (Generation 1 - Eaton Series 12)
- SM07- 022- 011.00 Steering Column, R & I (Generation 1 - John Deere Column)
- SM07- 022- 012.00 Steering Column, Recondition (John Deere)
- SM07- 022- 013.00 Power Steering Control Valve, R & I (Generation 1 - w/John Deere Column)
- SM07- 022- 018.00 Emergency Steer Accumulator, R & I
- SM07- 022- 022.00 Steering Control Valve, Recondition (Generation 2 - Eaton Series 10)
- SM07- 022- 023.00 Steering Control Valve, R & I (Generation 2 - w/RR- TCI Column)
- SM07- 022- 025.00 Steering Column, R & I (Generation 2 - RR- TCI Column)
- SM07- 022- 027.00 Priority Flow Control Valve, R & I (Emergency Steering)
- SM07- 026- 008.00 Brake Treadle Valve, Recondition
- SM07- 026- 010.00 Brake Treadle Valve, R & I
- SM07- 029- 001.00 Swing Brake Actuator, R & I
- SM07- 029- 002.00 Swing Brake Actuator, Recondition

**AREA 09 TUBULAR BOOM, FLY, & JIB**

\*\*\*\*\*

- SM09- 001- 002.00 Repairing Damaged Tubular Booms, Flies, & Jibs

**AREA 14 CAB & HOUSE ASSEMBLY**

\*\*\*\*\*

- SM14- 001- 006.00 Repair Of Components Made Of Fibrous Composite Materials

**AREA 17 HYDRAULIC CRANE ATTACHMENT**

\*\*\*\*\*

- SM17- 001- 036.00 Hydraulic Boom Inspection
- SM17- 001- 046.00 Four Section Boom, R & I (33' - 105' Full Power)
- SM17- 001- 047.00 Four Section Boom, Recondition (33' - 105' Full Power)
- SM17- 002- 022.00 Boom Telescope Cylinder, Recondition
- SM17- 002- 026.00 Boom Telescope Cylinder, Troubleshooting
- SM17- 002- 027.00 Boom Telescope Counterbalance Valve, R & I
- SM17- 003- 013.00 Boom Hoist Cylinder, Recondition
- SM17- 003- 014.00 Boom Hoist Counterbalance Valve, R & I (Port Block Mounted)
- SM17- 003- 015.00 Boom Hoist Counterbalance Valve, Recondition (Port Block Mounted)
- SM17- 003- 021.00 Boom Hoist Cylinder, R & I
- SM17- 003- 034.00 Boom Hoist Cylinder, R & I (w/Integral Counterbalance Valve)
- SM17- 003- 035.00 Boom Hoist Counterbalance Valves, R & I (Case Mounted)
- SM17- 009- 006.00 Four Sheave Boom Head Machinery, Recondition

**AREA 18 SPECIAL ATTACHMENTS**

\*\*\*\*\*

- SM18- 000- 001.00 Capscrew Torques
- SM18- 000- 002.00 Bearing, Gear, Shaft, & Housing Inspection
- SM18- 000- 003.00 Crane System Schematics
- SM18- 007- 003.00 Reeling Drum, R & I
- SM18- 007- 004.00 Reeling Drum, Recondition
- SM18- 017- 005.00 Carrier Winch Valve Controller, Recondition
- SM18- 017- 007.00 Carrier Winch Control Valve, R & I
- SM18- 018- 001.00 Air Conditioning Service Precautions
- SM18- 018- 002.00 Air Conditioning Hydraulic Drive Motor, R & I (Generation 1)
- SM18- 018- 003.00 Air Conditioning Hydraulic Drive Motor, Recondition (Generation 1)
- SM18- 018- 004.00 Air Conditioning Compressor, Recondition
- SM18- 018- 006.00 Air Conditioning Compressor, R & I (Generation 1)
- SM18- 018- 013.00 Air Conditioning Compressor, R & I (Generation 2)
- SM18- 018- 014.00 Air Conditioning Hydraulic Drive Motor, R & I (Generation 2)
- SM18- 018- 015.00 Air Conditioning Hydraulic Drive Motor, Recondition (Generation 2)

**RTC- 8080/8090/8090XP II Series - Master Keysheet  
(N4 Prefix On Crane Serial Number)**

**AREA 00                    GENERAL INFORMATION**

\*\*\*\*\*

SM00- 000- 000.00    Service Manual General Usage & Instructions

**AREA 01                    RUBBER TIRE LOWER**

\*\*\*\*\*

- SM01- 002- 023.00    Front & Rear Axles, Recondition
- SM01- 004- 015.00    Front Axle, R & I
- SM01- 007- 028.00    Steer Cylinder, Recondition
- SM01- 007- 029.00    Steer Cylinder, R & I
- SM01- 018- 060.00    Transmission, Recondition
- SM01- 018- 061.00    Transmission, R & I
- SM01- 022- 004.00    U- Joint Installation - Half Round Yokes
- SM01- 022- 005.00    U- Joint Installation - Full Round Yokes
- SM01- 029- 033.00    Rear Axle & Suspension, R & I
- SM01- 030- 018.00    Park Brake Caliper And Actuator, R & I  
                                  Bleeding The Actuator  
                                  Adjusting The Caliper  
                                  Testing The Park Brake
- SM01- 030- 019.00    Park Brake Caliper And Actuator, Recon  
                                  Brake Lining Replacement
- SM01- 039- 003.00    Hydraulic System Cleaning Procedure
- SM01- 039- 005.00    Hydraulic Reservoir Filter Assembly, Recondition
- SM01- 039- 009.00    Hydraulic Reservoir Filter, R & I
- SM01- 043- 001.00    Solenoid Valves, General Recondition
- SM01- 043- 003.00    Outrigger Solenoid Valve Stack, Recondition (Function)
- SM01- 043- 004.00    Four Way Solenoid Valve, Recondition (Outrigger Directional)
- SM01- 043- 030.00    Combination Steering Control Valve, Recondition
- SM01- 043- 050.00    Outrigger Function Control Valve, R & I
- SM01- 043- 051.00    Combination Steering Control Valve, R & I
- SM01- 043- 052.00    Outrigger Directional Control Valve, R & I
- SM01- 044- 027.00    Outrigger Lock Valve Cartridge, R & I And Recondition
- SM01- 045- 055.00    Outrigger Beam Cylinder, Recondition
- SM01- 045- 061.00    Outrigger Beam & Beam Cylinder, R & I
- SM01- 046- 047.00    Outrigger Jack Cylinder, R & I
- SM01- 046- 048.00    Outrigger Jack Cylinder, Recondition
- SM01- 047- 034.00    Relief Valve, Recondition (Outrigger)
- SM01- 048- 047.00    Rotating Joint, R & I
- SM01- 048- 048.00    Rotating Joint, Recondition
- SM01- 050- 010.00    Remote Transmission Oil Cooler, R & I
- SM01- 050- 011.00    Hydraulic Oil Cooler, R & I
- SM01- 066- 000.00    Electrical System Wire Identification Code
- SM01- 066- 029.00    Battery, R & I
- SM01- 069- 005.00    Tire & Rim, R & I
- SM01- 071- 012.00    Engine Housing, R & I
- SM01- 076- 054.00    Collector Ring, R & I
- SM01- 076- 055.00    Collector Ring, Recondition (G1)
- SM01- 076- 072.00    Collector Ring, Recondition (G2)
- SM01- 076- 078.00    Collector Ring, Recondition (50 Ring)
- SM01- 076- 092.00    Collector Ring, Recondition (53 Ring)
- SM01- 076- 094.00    Collector Ring, Recondition (52 Ring)
- SM01- 077- 013.00    Starter, R & I
- SM01- 077- 014.00    Alternator, R & I
- SM01- 077- 015.00    Radiator, Charged Air, And Hydraulic Oil Cooler, R & I
- SM01- 077- 034.00    CAC & Radiator, R & I

- SM01- 078- 018.00 Oscillation Cylinder, Recondition
- SM01- 078- 020.00 Axle Oscillation Accumulator, Recondition (Hydro Gas Suspension)
- SM01- 078- 025.00 Axle Oscillation Cylinder, R & I
- SM01- 078- 026.00 Axle Oscillation Lockout Valve, R & I
- SM01- 078- 027.00 Axle Oscillation Lockout Manifold, Illustrated
- SM01- 078- 028.00 Axle Oscillation Accumulator, R & I (Hydro Gas Suspension)
- SM01- 078- 029.00 Hydro Gas Valve Manifold, R & I
- SM01- 078- 030.00 Hydro Gas Valve Manifold, Illustrated
- SM01- 079- 040.00 Lower Hydraulic Components, R & I (Suction, Pressure & Return Lines)
- SM01- 079- 042.00 Lower Hydraulic Components, R & I (Outriggers, Steering, & Axle Oscillation)
- SM01- 079- 079.00 Lower Hydraulic Components, R & I (Suction, Pressure & Return Lines)
- SM01- 080- 008.00 Pump Disconnect, Recondition
- SM01- 080- 049.00 Pump Disconnect, R & I
- SM01- 081- 014.00 Hydraulic Pump, Recondition - Steel Body (Boom Hoist, Telescope, Winch)
- SM01- 081- 037.00 Hydraulic Pump, Recondition- Aluminum Body (O.R., Brakes, Steering, Swing)
- SM01- 081- 046.00 Hydraulic Pump, Recondition - 1 Section (Winch)
- SM01- 081- 047.00 Hydraulic Gear Pump, R & I - 1 Section (Winch)
- SM01- 081- 048.00 Hydraulic Gear Pump, R & I - 2 Section Steel (Boom Hoist, Telescope, & Winch)
- SM01- 081- 055.00 Hydraulic Gear Pump, R & I - 2 Section Alum (O.R., Brakes, Steering, Swing)
- SM01- 081- 061.00 Hydraulic Vane Pump, Recon.
- SM01- 081- 070.00 2- Section Gear Pump Assy, R & I
- SM01- 081- 071.00 2- Section Gear Pump Assy, Recondition (Parker PGP610 Series)

**AREA 03 UPPER REVOLVING FRAME**

\*\*\*\*\*

- SM03- 001- 073.00 Upper Revolving Frame & Turntable Bearing, R & I
- SM03- 003- 019.00 Counterweight, R & I (Cranes Without Counterweight Removal System)
- SM03- 010- 025.00 Counterweight Removal Cylinder, Recondition
- SM03- 010- 045.00 Counterweight Removal Cylinder, R & I
- SM03- 010- 046.00 Counterweight Removal Solenoid Control Valve, R & I
- SM03- 010- 048.00 Counterweight Removal Solenoid Control Valve, Recondition

**AREA 04 VERTICAL SHAFTS**

\*\*\*\*\*

- SM04- 005- 034.00 Swing Brake, R & I
- SM04- 005- 035.00 Swing Brake, Recondition
- SM04- 010- 035.00 Swing Reduction Unit, Recondition
- SM04- 010- 036.00 Swing Reduction Unit, R & I

**AREA 05 HORIZONTAL SHAFTS**

\*\*\*\*\*

- SM05- 006- 026.00 Winch, Troubleshooting
- SM05- 006- 028.00 Winch, Recondition
- SM05- 006- 035.00 Winch Assembly, R & I
- SM05- 018- 006.00 Winch Roller, R & I And Recondition

**AREA 06 UPPER ENGINE**

\*\*\*\*\*

- SM06- 008- 016.00 Throttle Pedal Assembly, R & I
- SM06- 025- 021.00 Operator's Cab A/C Coil And Heater Core, R & I
- SM06- 025- 022.00 A/C Coil And Heater Core, Illustrated
- SM06- 025- 024.00 Cab Heater Water Swivel, R & I And Recondition (Rotating Joint)
- SM06- 025- 025.00 Operator's Cab Heater Core, R & I
- SM06- 025- 026.00 Diesel Coolant Heater, Troubleshooting & Recondition
- SM06- 025- 027.00 Diesel Coolant Heater, R & I
- SM06- 047- 000.00 Electrical System Wire Identification Code

**AREA 07                    HYDRAULIC POWER SUPPLY**

\*\*\*\*\*

- SM07- 000- 000.00 Hydraulic Schematic Diagram Symbol Legend
- SM07- 001- 027.00 Pilot Control Accumulator, R & I (100psi)
- SM07- 001- 030.00 Carrier Brakes Accumulators, R & I (1,200psi)
- SM07- 001- 032.00 Piston Type Accumulator, Recondition (Emergency Steering)
- SM07- 002- 032.00 Relief Valve, Recondition (Air Conditioning)
- SM07- 002- 033.00 Solenoid/Relief Valve, Recondition (Telescope)
- SM07- 003- 006.00 Solenoid Valves, General Recondition
- SM07- 003- 011.00 Directional Relief Valve, Recondition (Boom Telescope Cylinder)
- SM07- 004- 024.00 Upper Hydraulic Components, R & I (Two Winch Plumbing - G1)
- SM07- 004- 025.00 Upper Hydraulic Components, R & I (Upper Frame - G1)
- SM07- 004- 027.00 Upper Hydraulic Components, R & I (Single Winch Plumbing - G1)
- SM07- 004- 034.00 Upper Hydraulic Components, R & I (Upper Frame - G2)
- SM07- 004- 036.00 Upper Hydraulic Components, R & I (Two Winch Plumbing - G2)
- SM07- 004- 037.00 Upper Hydraulic Components, R & I (Single Winch Plumbing - G2)
- SM07- 004- 052.00 Upper Hydraulic Components, R & I (Upper Frame - G3)
- SM07- 004- 084.00 Upper Hydraulic Components, R & I (Upper Frame - G4)
- SM07- 006- 034.00 Swing Motor, Recondition
- SM07- 006- 095.00 Winch Motor, Recondition
- SM07- 006- 107.00 Winch Motor, R & I
- SM07- 006- 108.00 Swing Motor, R & I
- SM07- 008- 037.00 Pressure Reducing Valve, Recondition
- SM07- 008- 063.00 Priority Flow Control Valve Assembly, Recondition (Emergency Steering)
- SM07- 008- 101.00 Control Valve, Recondition (Husco 5000 & 6000 Series)
- SM07- 008- 107.00 Dual Axis Controller Valve, Recondition
- SM07- 008- 108.00 Single Axis Controller Valve, Recondition
- SM07- 008- 112.00 Pressure Reducing Valve, Recondition
- SM07- 008- 116.00 Dual Axis Controller Valve, R & I
- SM07- 008- 117.00 Single Axis Controller Valve, R & I
- SM07- 008- 118.00 Swing Brake Pedal Valve, Recondition
- SM07- 008- 122.00 Winch Counterbalance Valve, Recondition
- SM07- 008- 132.00 Control Valves, Recondition (Husco 7000 Series)
- SM07- 008- 135.00 Winch Control Valve, R & I
- SM07- 008- 140.00 Winch Counterbalance Valve, R & I
- SM07- 008- 142.00 Accumulator Charging Valve, Recondition (Carrier Brakes)
- SM07- 008- 143.00 Accumulator Charging Valve, R & I (Carrier Brakes)
- SM07- 008- 147.00 Boom Hoist/Telescope Control Valve, R & I (Gen 1 w/Solenoid Relief Valve)
- SM07- 008- 148.00 Swing Control Valve, R & I
- SM07- 008- 149.00 Swing Brake Pedal Valve, R & I
- SM07- 008- 150.00 Fine Metering Valve, R & I
- SM07- 008- 151.00 Fine Metering Valve, Recondition
- SM07- 008- 201.00 Boom Hoist/Telescope Control Valve, R & I (Gen 2 w/o Solenoid Relief Valve)
- SM07- 010- 006.00 Boom Telescope Electronic Foot Control, R & I
- SM07- 018- 001.00 Hydraulic System Tube Fittings
- SM07- 022- 022.00 Steering Control Valve, Recondition
- SM07- 022- 023.00 Steering Control Valve, R & I
- SM07- 022- 025.00 Steering Column, R & I
- SM07- 022- 029.00 Priority Flow Control Valve, R & I (Emergency Steering)
- SM07- 022- 030.00 Accumulator, R & I (Emergency Steering)
- SM07- 026- 008.00 Brake Treadle Valve, Recondition
- SM07- 026- 012.00 Brake Treadle Valve, R & I

**AREA 09                    TUBULAR BOOM**

\*\*\*\*\*

- SM09- 001- 002.00 Tubular Boom, Fly, & Jib Repair

**AREA 17                    HYDRAULIC CRANE ATTACHMENT**

\*\*\*\*\*

- SM17- 001- 053.00 Hydraulic Boom Inspection - Formed Sections
- SM17- 001- 066.00 Five Section Latching Boom, R & I (G1)
- SM17- 001- 067.00 Five Section Latching Boom, Recondition (G1)
- SM17- 001- 081.00 Five Section Latching Boom, R & I (G2)
- SM17- 001- 082.00 Five Section Latching Boom, Recondition (G2) - R3 Type Boom
- SM17- 002- 054.00 Boom Telescope Counterbalance Valve, R & I
- SM17- 002- 055.00 Boom Telescope Cylinder, Recondition
- SM17- 002- 057.00 Boom Latching Cylinder, Recondition- Hydraulic Technologies (G2)
- SM17- 002- 058.00 Telescope Cylinder Length Reel, R & I (G1)
- SM17- 002- 059.00 Telescope Cylinder Length Reel, Recondition
- SM17- 002- 065.00 Latching Boom Telescope System, Troubleshooting
- SM17- 002- 066.00 Boom Latching/Pinning Cylinder, R & I (G1)
- SM17- 002- 067.00 Boom Telescope Cylinder Mechanism, Recondition (G1)
- SM17- 002- 068.00 Telescope Cylinder Length Reel, R & I (G2)
- SM17- 002- 069.00 Boom Latching/Pinning Cylinder, Recondition- Texas Hyd (G1 & 3)
- SM17- 002- 084.00 Boom Telescope Cylinder, Calibration
- SM17- 002- 088.00 Hose & Cable Reel, Recondition
- SM17- 002- 089.00 Boom Telescope Cylinder Mechanism, Recondition (G2)
- SM17- 002- 105.00 Boom Pinning Cylinder, R & I (G1)
- SM17- 002- 106.00 Boom Pinning Cylinder, Recondition (G1)
- SM17- 002- 107.00 Boom Latching Cylinder, R & I (G2)
- SM17- 002- 108.00 Latching Boom Telescope System, Troubleshooting (G2)
- SM17- 002- 109.00 Latching Boom Telescope System, Calibration (G2)
- SM17- 002- 110.00 Boom Telescope Cylinder Mechanism, Recondition (G3)
- SM17- 002- 111.00 Latching Boom Telescope System, Calibration (G3)
- SM17- 002- 114.00 Hose & Cable Reel, R & I
- SM17- 002- 115.00 Telescope Cylinder Length Encoder Reels, R & I (G3)
- SM17- 002- 117.00 Pin/Latch Valve, Recondition
- SM17- 002- 118.00 Pin/Latch Valve, Recondition - (G2) - R3 Type Boom
- SM17- 002- 130.00 Telescope Length Reel, R & I
- SM17- 003- 013.00 Boom Hoist Cylinder, Recondition
- SM17- 003- 039.00 Boom Hoist Cylinder, R & I
- SM17- 003- 040.00 Boom Hoist Counterbalance Valve, R & I
- SM17- 003- 055.00 Boom Hoist Counterbalance Valve, R & I
- SM17- 009- 004.00 Five Sheave Head Machinery, Recondition

**AREA 18                    SPECIAL ATTACHMENTS**

\*\*\*\*\*

- SM18- 000- 001.00 Capscrew Torques
- SM18- 000- 002.00 Gear, Shaft, Bearing, & Housing Inspection
- SM18- 000- 003.00 Crane Systems Schematics
- SM18- 007- 006.00 Reeling Drum, R & I (Greer)
- SM18- 007- 007.00 Reeling Drum, Recondition (Greer)
- SM18- 007- 016.00 Reeling Drum, Troubleshooting & Recondition (Hirschmann)
- SM18- 007- 018.00 Reeling Drum, R & I (Hirschmann)
- SM18- 007- 021.00 Reeling Drum, R & I (Hirschmann)
- SM18- 018- 001.00 Air Conditioning Service Precautions
- SM18- 018- 004.00 Air Conditioning Compressor, Recondition
- SM18- 018- 013.00 Air Conditioning Compressor, R & I
- SM18- 018- 014.00 Air Conditioning Hydraulic Drive Motor, R & I
- SM18- 018- 015.00 Air Conditioning Hydraulic Drive Motor, Recondition

## How To Use This Manual, General Service Instructions, And Safety Procedures

The following information is provided to help guide the user of this manual. An explanation of how this manual is organized, as well as general information and safety considerations which should be understood when performing any service or maintenance procedure, is given. This information is general in nature and should supplement any of the specific procedures in this manual along with a constant awareness of safety and common sense.

### How To Use This Manual

This Service Manual is a collection of written procedures which are used to service and maintain a specific crane model. The index, which is called a “Keysheet”, is used to organize the procedures within this manual and serve as a Table Of Contents as well. Each procedure, in this manual, is written so that it can stand alone and typically covers only one procedure. Procedures are given a numerical designation, or “SM Code” Number, (Example: SM01–005–034.00) which is unique to that procedure and that procedure only. The following is a listing of the general area definitions which are designated by the first digits in the SM Code Number sequence:

### General Area Descriptions

- SM01 – Rubber Tire Lower
- SM02 – Crawler Lower
- SM03 – Upper Revolving Frame & Machinery
- SM04 – Vertical Shafts
- SM05 – Horizontal Shafts
- SM06 – Upper Engine
- SM07 – Hydraulic Power Supply
- SM08 – Angle Boom
- SM09 – Tubular Boom
- SM10 – Tagline Winder
- SM11 – Fairleader
- SM12 – Shovel Attachment
- SM13 – Trench Hoe, Logger & Scraper Attachment & Prop Handler
- SM14 – Cab & House Assembly
- SM15 – Rotascope Attachment (Discontinued)
- SM16 – Wire Rope Requirements
- SM17 – Hydraulic Boom And Attachments
- SM18 – Special Attachments
- SM19 – Diesel Pile Hammer (Discontinued)
- SM20 – Tower, Climbing Assembly, Traveling Base & Gantry (Discontinued)
- SM21 – Log Skidder (Discontinued)
- SM22 – Hydraulic Hammer (Discontinued)

The procedures in this manual are collated by SM Code Number sequence. Use the Keysheet in the front of this manual, the general area descriptions shown previously, and the SM Code title shown on the

Keysheet to find the specific procedure required to service the crane.

Throughout this manual, reference is made to the left, right, front, and rear, pertaining to directions and locations. These reference directions are relative to the operator, sitting in the operator’s seat, with the upper directly over the front of the carrier, unless otherwise stated. (Crawler mounted cranes: upper over the front of the crane with travel motors to the rear.)

Danger, warning, and caution captions as well as special notes are used throughout this manual and on the crane to emphasize important and critical instructions. **If any instruction, caution, warning, or danger labels, decals, or plates become lost, damaged, or unreadable, they must be replaced.** Information contained on such labels, decals, and plates is important and failure to follow the information they contain could result in an accident. Replacement labels, decals, and plates can be ordered through a Link-Belt Distributor. For the purpose of this manual, danger, warning, and caution captions and notes are defined as follows:



### DANGER

An operating procedure, practice, etc. which, if not correctly followed, may result in severe personal injury, dismemberment, or loss of life.



### WARNING

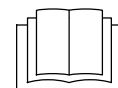
An operating procedure, practice, etc. which, if not correctly followed, may result in personal injury.

### CAUTION

An operating procedure, practice, etc. which, if not correctly followed, may result in damage to, or destruction of, equipment or property.

### NOTES

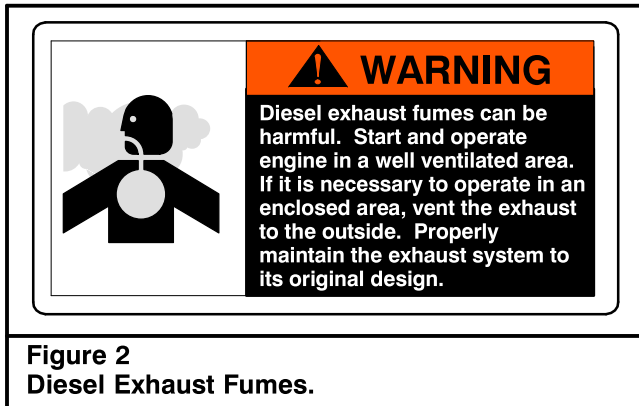
**Note:** An operating procedure step, condition, etc. which is essential in order for the process to be completed properly.



This symbol may appear in manuals or on a label on the crane to alert personnel that additional instructions are included in the crane Operator’s Manual.



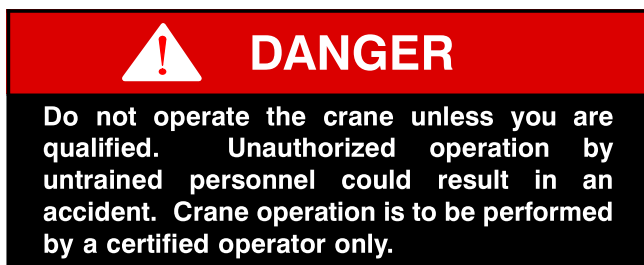
**Figure 1**  
Keep hands and tools clear of moving parts.



**Figure 2**  
Diesel Exhaust Fumes.

## Service Safety And Set Up Guidelines

The following is a list of safety and set up considerations which may apply to any service or maintenance procedure. Review the entire list and understand the type of things you must consider to perform a safe service procedure and then apply these guidelines to each specific service or maintenance procedure.



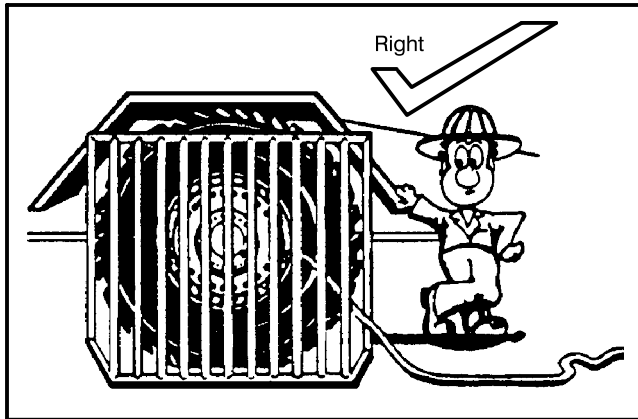
### Service Safety

1. Read and understand the service or maintenance procedure to be performed before beginning work. By reading the procedure ahead of time, you can be sure to have the replacement parts and tools on hand that are required to complete the job.
2. Wear protective gear to prevent injury; hard hat, safety glasses, gloves, steel toed shoes, etc.



**Figure 3**  
Pinch Point Label

3. First aid supplies and a fire extinguisher should be on the job site to assist in an unexpected situation. The location of these items should be known to all as well as access to a telephone for emergencies.
4. Work in a clean, dry, firm, level area whenever possible. Choosing the correct work site can make a big difference on how well the job goes.
5. Use caution around flammable materials. Be aware of all the materials in the work area which are a threat. Also make others aware of volatile materials; post signs if necessary.
6. Release all trapped pressure in air and hydraulic circuits before disconnecting any line or component. Shutdown the crane, exhaust all pressure from the crane's air reservoir(s) and work the hydraulic control levers back and forth before servicing the crane.
7. Do not disconnect any hydraulic line from a crane which has its attachment in the air. Trapped pressure may be all that is suspending it. Disconnecting a line could release the trapped pressure, causing the attachment to fall. Lower the attachment to the ground or on to its rest before servicing the crane.
8. Do not work on a crane which is in motion. Fans, belts, gear trains, etc. can catch an unexpected person and quickly dismember them.
9. Do not climb on the attachment or other hard to reach areas. If the steps and/or ladders which are installed on the crane do not provide adequate access to the area of the crane which needs servicing, use a step ladder or other approved device.
10. Pinch points exist between the upper and lower frames. Death or dismemberment may result from personnel caught in these points. Learn where these pinch points are and stay clear of the rotating upper frame.



**Figure 4**  
Use a guard when inflating tires.

11. If working in a confined area, be sure to provide adequate ventilation when running the engine(s), using toxic solvents, welding, or any other operation which contaminates the fresh air supply.
12. Post a sign in the operator's cab to alert others that the crane is under service. Starting the crane while it is being serviced could severely injure someone. Crane damage could also occur if systems are operated prematurely. Imagine starting the engine(s) before the oil is replaced.
13. Secure access panels, doors, and machinery hoods when in the open position to ensure they do not fall or slam shut due to wind or accidental disruption.
14. Crane parts may be heavy. Always use an appropriate lifting device to support work. Do not attempt to lift an object without knowing its weight. Get help if necessary.
15. Always use a safety rim cage when inflating or deflating tires. Worn or misassembled parts can "explode" from the assembly causing serious injury. Use a safety rim cage, clip on air chuck, and stand aside when inflating or deflating tires.

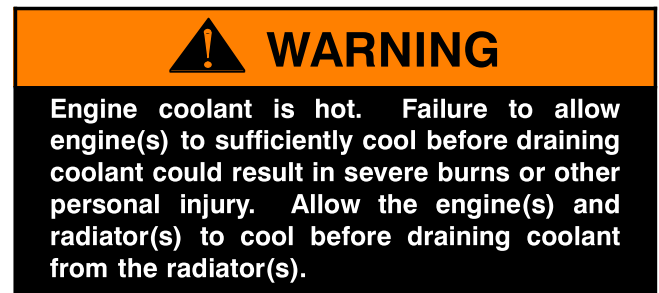
### Crane Set Up And Disassembly

1. Properly park the crane as described in the Operator's Manual. Park the crane in an area which provides the most comfortable working conditions. However, do not park the crane where it will be an obstruction or an intrusion to traffic, coworkers, or to the public. Keep in mind that a major service procedure, or a repair part which requires a long lead time, could have the crane disabled for an extended period of time.
2. Keep in mind the mess which is sometimes caused by a crane under repair. Oil or other fluid leaks should be contained or prevented. Consider your responsibility of maintaining a safe clean work area and a healthy environment for all.

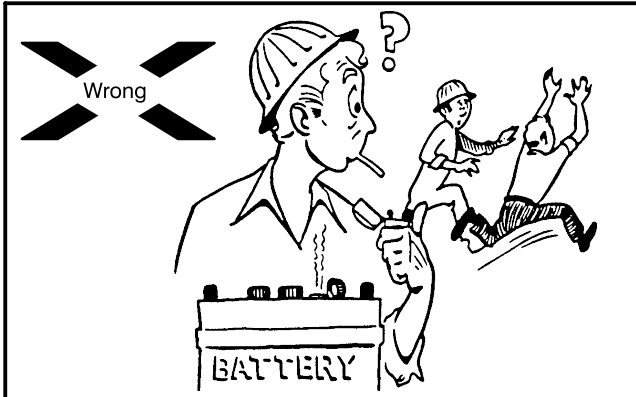


**Figure 5**  
Allow engine to cool before removing the radiator cap.

3. If the crane is equipped with outriggers, it may be safer as well as an advantage to raise and level the crane on outriggers to provide easier access to areas underneath. Do not work under a crane that is improperly supported.
4. Shutdown the engine(s) per the instructions given in the Operator's Manual.
5. Post a sign in the operator's cab to alert others that the crane is being serviced.
6. Engines, transmissions, hydraulic systems, etc. generate extreme heat during operation. Temperatures can reach levels which may cause serious burns. Allow the crane to cool before attempting to service it.



7. Pressure is generated inside the engine's cooling system due to the heat transfer process from the engine(s) to the radiator(s). Do not attempt to open or drain the radiator(s) until it/they has/have had sufficient time to cool. Disconnecting hoses before the engine(s) and radiator(s) has/have cooled is even more dangerous. Wait until the engine(s) and radiator(s) have cooled and then drain the radiator(s) before disconnecting any hoses. Properly store or dispose of used coolant.



**Figure 6**  
Do not use an open flame near the battery.

### **WARNING**

Solvents and cleaning solutions can be hazardous. Serious personal injury may result from misuse of these products. Read and follow all the manufacturer's recommendations concerning solvents and cleaning solutions.

8. Thoroughly clean the area of the crane which is to be serviced. Dirt or other contamination could enter the hydraulic, air, lubricating system, etc. and cause immediate and/or long term problems. Cleaning the service area not only prevents contamination problems but it also makes working on the crane easier and sometimes problems are more recognizable.
9. Before beginning any removal or disassembly procedure, take a moment to observe critical features of the assembly which may greatly simplify the installation or assembly process. Label electrical, hydraulic, air, or other connections. Index mark pump, motor, and valve sections. Lightly spray paint or count the threads of adjustment screws. Simple steps such as these can minimize the effort needed to put the crane back in service.

### **WARNING**

Hydraulic oil is under pressure and may be hot. A sudden release of hot oil could cause severe burns and/or other serious injury. Shutdown the engine(s) and exhaust all trapped hydraulic pressure from the system before removing any line or component.

10. Hydraulic systems, while operating, are under high pressure. Even after the crane is shutdown these pressures can remain trapped in the hydraulic lines and system components. Some hydraulic systems utilize an air pressurized reservoir which maintains pressure on the system after the crane is shutdown. It is critical that all residual pressure, which is trapped in the system, be neutralized before disconnecting any line or hydraulic component. Use the following techniques to exhaust trapped hydraulic pressure from the system:
  - a. Lower the attachment to the boom rest, onto blocking, or onto the ground and shutdown the engine(s).
  - b. Open the drain valves on the air system reservoir(s), if equipped, to bleed the air system pressure.
  - c. Relieve any residual or precharge pressure by pushing the button on the pressure relief valve, on the hydraulic reservoir, if equipped. Otherwise, loosen the filler cap 1/4 turn.
  - d. Turn the ignition switch to the **ON POSITION**, but **DO NOT START THE ENGINE**.
  - e. Operate the steering control(s) back and forth repeatedly until steering becomes hard. (On cranes equipped with emergency steering system, it will take several rotations of steering wheel before steering becomes hard.)
  - f. Work the crane control levers and outrigger switches, if equipped, back and forth several times.
  - g. Turn ignition switch to the **OFF POSITION**.
  - h. When pressure is fully relieved, close the drain valves on the air system reservoir(s), if equipped.

### **WARNING**

Air lines may contain high pressure. Opening lines and fittings before relieving air pressure may result in serious injury. Shutdown the engine(s) and drain the air system reservoir(s) before opening any line or fitting.

11. Air system circuits, like hydraulic circuits, contain high pressures also. Although the threat of a hot working fluid does not exist, highly pressurized lines and components can possibly "fly off" if lines are disconnected before the system pressure is relieved. Open the drain valve on the air system reservoir(s) to exhaust system pressure before working on the crane.

## **WARNING**

Use care not to cause sparks at the battery terminals while disconnecting or connecting the battery. Battery gasses are volatile and could be ignited by a spark or flame causing the battery to explode. Keep the area around the battery well ventilated and disconnect the negative side of the battery first, with the ignition switch “OFF”, to minimize hazard.

Battery posts, terminals, and related accessories contain lead and lead compounds. Eating or smoking with lead residue on hands may cause lead poisoning. Wash hands after handling lead products.

12. When working on electrical circuits, disconnect the battery to minimize shock, burn, spark, or other hazard. When disconnecting the battery, confirm that the ignition switch is in the “OFF” position. Disconnect the negative side of the battery first to minimize the potential for sparks at the battery. Battery gases which are exposed to such sparks, could cause an explosion. Likewise when connecting the battery, confirm that the ignition switch is in the “OFF” position and install the positive cable(s), first and the negative connection(s) last.
13. It is a good practice when disassembling hydraulic components to lay the parts out in the order that they were disassembled. Keeping the parts in this order during disassembly, cleaning, and inspection will aid in the assembly process.

### **Welding**

1. When making repairs which require welding, disconnect any electronic equipment (such as rated capacity limiters and engine computers) to prevent damage to them. Use the battery disconnect switch(es), if equipped.
2. Be aware of systems adjacent to areas being welded. Residual heat from the welding process could cause damage to other components. Heat may also vaporize materials which may become toxic or volatile.
3. Remove paint from areas to be welded to prevent toxic fumes.
4. The grounding connection should be within 3 feet (1 m) of the welded parts.
5. Connect the ground to the lower, if welding on the lower, or to the upper if welding on the upper. Electrical current through the turntable bearing could cause an arc which could damage it.

6. Do not position the ground connection where seals or bearing, as in transmissions or valves, will be between it and the welded parts.
7. Remove any flammable materials from the area.
8. Use the appropriate setting on the welder for the size of the welding operation. Do not use more than 200 Volts continuously.

### **Cleaning And Inspection**

## **WARNING**

Solvents and cleaning solutions can be hazardous. Serious personal injury may result from misuse of these products. Read and follow all the manufacturer’s recommendations concerning solvents and cleaning solutions.

1. All components should be thoroughly cleaned with an approved cleaning solvent, air dried and carefully inspected for damage, wear and corrosion.
2. All Loctite<sup>®</sup> or other sealant residue should be removed from threads of hardware and parts that are going to be reused.
3. All “soft parts”, such as seals, gaskets, back up rings, and o-rings, should be replaced.
4. Replacement of bearings and bushings is generally a good preventive maintenance measure. Even though a bearing or bushing seems to be intact and is functioning properly, its life span is limited. Replacing a simple bearing or bushing while the opportunity is at hand could save a complete component failure later.
5. In the event of severe defects, contact factory personnel for directions whether to repair or replace any major component.

### **Crane Assembly**

1. Loosely assemble parts to ensure all parts are in place and fasteners started before beginning torquing procedure. Always use a cross torquing sequence to ensure even and uniform installation.

## **WARNING**

Lubricants, sealants, joint and thread locking compounds, etc. can be hazardous. Serious personal injury may result from misuse of these products. Read and follow all manufacturer’s recommendations concerning these products.