

# SM KEYSHEET AND GENERAL INFORMATION

**Link-Belt**  
C R A N E S

DATE 5/14/18  
PAGE 1

ORDER NO. - J8105      MODEL - HTC-3140      SERIAL NO. - J8K8-5591

DISTRIBUTOR: GENERAL EQUIPMENT & SUPPLIES  
CARRIER ENG:  
    MODEL- CUMMINS ISX15 2013  
    S/N- 79953509  
    OPERATION- 4310639  
    PARTS- NONE  
UPPER ENGINE:  
    MODEL- CUMMINS QSB6.7 T4F  
    S/N- 74139504  
    OPERATION- 4332780  
    PARTS- NONE  
  
O/M BOOK- 1359050918  
ADDENDUMS - NONE  
TECH BULLETINS - NONE  
MISCELLANEOUS - HOIST ROPE CAUTION

SALES ORDER: 025591  
MAIN TRANS:  
    MODEL- EATON 16E309ALL  
    S/N- K1239188  
    OPERATION- NONE  
    PARTS- NONE  
AUX TRANS:  
    MODEL- EATON AT-1202  
    S/N- K1233304  
    OPERATION- NONE  
    PARTS- NONE  
AEM: BOOK- MC-1407  
    VIDEO- DVD-CR

SM CODE      DESCRIPTION  
SM00 GENERAL INFORMATION

\*\*\*\*\*  
SM00-000-000.00 HOW TO USE THIS MANUAL,  
                    SERVICE & SAFETY INFO

SM01 RUBBER TIRE LOWER

\*\*\*\*\*  
SM01-001-010.00 BOOM REST, R & I  
SM01-002-012.00 FRONT AXLE, RECON  
SM01-002-015.00 FRONT WHEEL & BRAKE  
                    DRUM, R & I  
SM01-003-010.00 BRAKE, RECON  
SM01-003-014.00 ADJUSTING THE BRAKES  
SM01-003-019.00 AUTOMATIC SLACK ADJUSTERS  
SM01-004-016.00 FRONT AXLES & SUSPENSION,  
                    R & I  
SM01-005-027.00 TROUBLESHOOTING SHEPPARD  
                    STEERING GEARS  
SM01-005-034.00 STEERING COLUMN, R & I  
SM01-005-035.00 STEERING COLUMN, RECON  
SM01-005-036.00 STEERING GEARS, R & I  
SM01-005-037.00 STEERING GEARS, RECON  
SM01-006-042.00 STEERING MITER BOX, R & I  
                    (OUTSIDE CAB)  
SM01-006-043.00 FRONT WHEEL ALIGNMENT &  
                    STEER LINKAGE ADJUSTMENT  
SM01-010-028.00 GEAR PUMP/MOTOR, RECON  
                    (STEERING)  
SM01-010-045.00 POWER STEERING PUMP, R&I  
                    (CUMMINS)  
SM01-016-004.00 HEATER CORE & A/C EVAP  
                    COIL, ILLUSTRATED

SM CODE      DESCRIPTION  
SM01 RUBBER TIRE LOWER

\*\*\*\*\*  
SM01-016-006.00 HEATER CORE AND A/C  
                    EVAPORATOR COIL, R & I  
SM01-018-065.00 TRANS & CLUTCH, R & I  
SM01-018-066.00 TRANSMISSION, RECONDITION  
SM01-019-035.00 TRANSMISSION SHIFT  
                    CONTROL, R & I  
SM01-021-002.00 AUX TRANS, RECON.  
                    (MODEL AT-1202)  
SM01-021-009.00 AUXILIARY TRANSMISSION,  
                    R & I  
SM01-022-004.00 U-JOINT INSTALLATION  
                    (HALF ROUND YOKES)  
SM01-022-005.00 U-JOINT INSTALLATION  
                    (FULL ROUND YOKES)  
SM01-024-013.00 AXLES, RECON.  
SM01-025-011.00 BRAKES, RECON  
                    (KESSLER REAR AXLE)  
SM01-025-016.00 ANTILOCK BRAKING SYSTEM,  
                    TROUBLESHOOTING  
SM01-027-028.00 FRONT AIR BRAKE CHAMBER,  
                    RECON  
SM01-027-054.00 REAR DUAL AIR BRAKE  
                    CHAMBER, R & I  
SM01-027-091.00 FRONT AIR BRAKE CHAMBER,  
                    R&I (W/AUTO SLACK ADJUST)  
SM01-027-106.00 CAGING DUAL AIR BRAKE  
                    CHAMBERS  
SM01-027-117.00 DUAL AIR BRAKE CHAMBER,  
                    RECON  
SM01-027-156.00 AIR DRYER, R & I

# SM KEYSHEET AND GENERAL INFORMATION

**Link-Belt**  
C R A N E S

DATE 5/14/18  
PAGE 2

ORDER NO.- J8105

MODEL - HTC-3140

SERIAL NO. - J8K8-5591

SM CODE	DESCRIPTION
SM01 RUBBER TIRE LOWER	
*****	
SM01-027-157.00	AIR DRYER, RECON
SM01-027-162.00	STACKABLE SOLENOID AIR CONTROL VALVES, RECON
SM01-027-164.00	AIR SYSTEM COMPONENTS, R&I
SM01-027-165.00	CARRIER AIR SYSTEM COMPONENTS, R & I
SM01-029-037.00	REAR AXLES & SUSPENSION, R & I
SM01-038-041.00	OUTRIGGER LEVEL SENSOR CALIBRATION
SM01-041-002.00	POWER TAKE OFF, R & I
SM01-041-003.00	POWER TAKE OFF, RECON. (CHELSEA)
SM01-043-001.00	SOLENOID VALVES, GENERAL RECONDITION
SM01-043-004.00	4-WAY SOLENOID VALVE, RECN
SM01-043-059.00	REAR OUTRIGGER SELECTOR VALVE, R & I
SM01-043-067.00	OUTRIGGER FUNCTION CONTROL VALVE STACK, RECON.
SM01-043-068.00	O/R FUNCTION CONTROL VALVE, R & I
SM01-044-027.00	OUTRIGGER LOCK VALVE CARTRIDGE, R&I AND RECON
SM01-045-048.00	BOTTOM OUTRIGGER BEAM CYLINDER, RECON
SM01-045-049.00	TOP OUTRIGGER BEAM CYLINDER, RECON
SM01-045-063.00	OUTRIGGER BEAM CYLINDERS, R & I
SM01-045-068.00	OUTRIGGER BEAM ASSY, R&I
SM01-046-034.00	JACK CYLINDER, RECON
SM01-046-040.00	JACK CYLINDER, RECON
SM01-046-050.00	FIFTH OUTRIGGER JACK CYLINDER, R & I
SM01-046-051.00	MAIN OUTRIGGER JACK CYLINDER, R & I
SM01-047-034.00	RELIEF VALVE, RECON
SM01-047-039.00	PRIORITY/RELIEF VALVE, R & I
SM01-047-040.00	PRIORITY/RELIEF VLV, RECN
SM01-066-000.00	ELECTRICAL SYSTEM WIRE IDENTIFICATION CODE
SM01-066-034.00	BATTERY, R & I
SM01-069-015.00	TIRES & RIMS, R & I

SM CODE	DESCRIPTION
SM01 RUBBER TIRE LOWER	
*****	
SM01-075-057.00	ALTERNATOR, R & I
SM01-075-061.00	STARTER, R & I
SM01-075-071.00	ENGINE FAN CLUTCH, R & I
SM01-075-072.00	RADIATOR AND CHARGED AIR COOLER ASSY, R & I
SM01-076-098.00	COLLECTOR RING ASSY, RECN (37 RING)
SM01-076-100.00	COLLECTOR RING, R & I
SM01-078-041.00	AXLE OSCILLATION VALVE BLOCK, ILLUSTRATED
SM01-078-045.00	AXLE OSCILLATION ACCUMULATORS, R & I
SM01-078-047.00	OSCILLATION CYLINDER ASSY, RECON.
SM01-078-048.00	AXLE OSCILLATION CYLINDERS, R & I
SM01-079-076.00	LOWER HYD COMPONENTS, R&I (AXLE OSCILLATION LINES)
SM01-079-082.00	LOWER HYDRAULIC COMPONENTS, R & I
SM01-081-068.00	OUTRIG/SUSPEN PUMP, R&I
SM01-081-069.00	HYD GEAR PUMP, RECON. (MODEL P16)
SM03 UPPER FRAME & MACHY	
*****	
SM03-001-077.00	UPPER REVOLVING FRAME & TURNABLE BEARING, R & I
SM03-010-025.00	CTWT REMOVAL CYL, RECON
SM03-010-048.00	CTWT REMOVAL SOLENOID CONTROL VALVE, RECON
SM03-010-050.00	COUNTERWEIGHT REMOVAL CYLINDER, R & I
SM03-010-051.00	COUNTERWEIGHT LOCKING CYLINDER, R & I
SM03-010-053.00	CTWT LOCKING CYLINDER CONTROL VALVE, R & I
SM03-010-064.00	CTWT REMOVAL CYLINDERS CONTROL VALVE, R & I
SM03-010-066.00	CTWT LOCKING CYLINDER CONTROL VALVE, R & I

# SM KEYSHEET AND GENERAL INFORMATION

**Link-Belt**  
C R A N E S

DATE 5/14/18  
PAGE 3

ORDER NO.- J8105

MODEL - HTC-3140

SERIAL NO. - J8K8-5591

SM CODE	DESCRIPTION	SM CODE	DESCRIPTION
SM04 VERTICAL SHAFTS		SM07 UPPER HYDRAULICS & AIR	
*****		*****	
SM04-005-030.00	SWING BRAKE, R & I	SM07-003-015.00	BOOM PIN/LATCH SOLENOID
SM04-005-035.00	SWING BRAKE, RECON		CONTROL VALVE, R & I
SM04-010-035.00	SWING REDUCTION UNIT, REC	SM07-003-020.00	WINCH MANIFOLD ASSY, RECN
SM04-010-041.00	SWING REDUCTION UNIT, R&I	SM07-004-129.00	UPPER HYDRAULIC COMPS,R&I (2 WINCH PLUMBING)
SM05 HORIZONTAL SHAFTS		SM07-004-135.00	UPPER HYD COMPONENTS, R&I (UPPER FRAME)
*****		SM07-005-077.00	HYDRAULIC PUMP, RECON (LINDE)
SM05-006-024.00	WINCH DRUM ASSY, R & I	SM07-005-081.00	HYD PISTON PUMP, RECON
SM05-006-028.00	WINCH, RECON	SM07-005-083.00	HYDRAULIC GEAR PUMP, RECN
SM05-006-046.00	REAR WINCH ASSY, R & I	SM07-005-088.00	PUMP DRIVE, RECON
SM05-006-048.00	WINCH, TROUBLESHOOTING (BRADEN CH260)	SM07-005-100.00	PILOT CONTROL PUMP, R & I (TWO WINCH CRANE)
SM05-006-049.00	WINCH, RECON. (BRADEN CH260)	SM07-005-101.00	WINCH PISTON PUMPS, R & I (TWO WINCH CRANE)
SM05-018-006.00	WINCH ROLLER, R&I AND RECON	SM07-005-102.00	TANDEM GEAR PUMP, R & I
SM06 UPPER ENGINE		SM07-005-103.00	PUMP DRIVE, R & I
*****		SM07-006-034.00	SWING MOTOR, RECON
SM06-001-010.00	TORSION SPRING COUPLING, R & I	SM07-006-095.00	WINCH MOTOR, RECON (LINDE)
SM06-008-009.00	THROTTLE TREADLE, R & I	SM07-006-116.00	WINCH MOTOR, R & I
SM06-013-015.00	STARTER, R & I	SM07-006-118.00	SWING MOTOR, R & I
SM06-013-034.00	RADIATOR & CHARGED AIR COOLER, R & I	SM07-008-032.00	CONTROL VALVE, RECON (MODEL V20)
SM06-013-035.00	ALTERNATOR, R & I	SM07-008-112.00	PRESS REDUCING VLV, RECON
SM06-025-022.00	HEATER CORE & A/C EVAP COIL, ILLUSTRATED	SM07-008-118.00	SWING BRK PEDAL VLV, RECN
SM06-025-023.00	UPPER CAB A/C EVAP COIL & HEATER CORE, R & I	SM07-008-130.00	SWING BRAKE PEDAL VALVE, R & I
SM06-029-003.00	BATTERY, R & I	SM07-008-132.00	CONTROL VALVES, RECON (BOOM HOIST/TELE/WINCH)
SM06-047-000.00	ELECTRICAL SYSTEM WIRE IDENTIFICATION CODE	SM07-008-167.00	DUAL AXIS ELECTRONIC CONTROLLERS, R & I
SM07 UPPER HYDRAULICS & AIR		SM07-008-168.00	DUAL AXIS ELECTRONIC CONTROLLERS, RECON
*****		SM07-008-176.00	SWING CONTROL VALVE, R&I
SM07-001-027.00	PILOT CONTROL ACCUMULATOR, R & I	SM07-008-221.00	BOOM HOIST/TELESCOPE
SM07-001-028.00	HYDRAULIC SYSTEM CLEANING PROCEDURE	SM07-010-006.00	BOOM TELESCOPE ELECTRONIC FOOT CONTROL, R & I
SM07-002-028.00	RELIEF VALVE, RECON	SM07-014-010.00	HYDRAULIC OIL COOLER ASSEMBLY, R & I
SM07-003-006.00	SOLENOID VALVES, RECON (GENERAL PROCEDURE)	SM07-014-011.00	HYDRAULIC OIL COOLER FAN MOTOR, R & I
SM07-003-014.00	BOOM PIN/LATCH SOLENOID CONTROL VALVE, RECON	SM07-014-012.00	HYDRAULIC GEAR PUMP/MOTOR, RECONDITION

# SM KEYSHEET AND GENERAL INFORMATION

DATE 5/14/18  
PAGE 4

ORDER NO.- J8105

MODEL - HTC-3140

SERIAL NO. - J8K8-5591

## SM CODE DESCRIPTION

### SM09 TUBULAR BOOM

\*\*\*\*\*  
SM09-001-002.00 REPAIRING DAMAGED TUBULAR  
BOOMS, FLYS, & JIBS

### SM14 CAB & HOUSE ASSEMBLY

\*\*\*\*\*  
SM14-001-007.00 CAB TILT CYLINDER, RECON.  
SM14-001-008.00 UPPER CAB TILT CYL, R & I

### SM17 HYDRAULIC BOOM

\*\*\*\*\*  
SM17-001-071.00 5 SECT LATCH BOOM, R & I  
(41-162')  
SM17-001-101.00 FIVE SECTION LATCHING  
BOOM, RECON.  
SM17-002-054.00 BOOM TELE COUNTERBALANCE  
VALVE, R & I  
SM17-002-055.00 BOOM TELE CYLINDER, RECN  
SM17-002-069.00 BOOM LATCH CYLINDER, RECN  
SM17-002-072.00 TELESCOPE CYLINDER LENGTH  
ENCODER REELS, R & I  
SM17-002-077.00 LATCHING BOOM TELESCOPE  
SYSTEM, TROUBLESHOOTING  
SM17-002-078.00 LATCHING BOOM TELESCOPE  
SYSTEM CALIBRATION  
SM17-002-086.00 BOOM PINNING CYLINDER,  
RECON  
SM17-002-087.00 HOSE & CABLE REEL, R & I  
SM17-002-088.00 HOSE & CABLE REEL, RECON  
SM17-002-095.00 BOOM PINNING  
CYLINDER, R & I  
SM17-002-096.00 BOOM LATCHING  
CYLINDER, R & I  
SM17-003-042.00 BOOM HOIST CYLINDER, R&I  
SM17-003-043.00 BOOM HOIST COUNTERBALANCE  
VALVE, R & I  
SM17-003-058.00 BOOM HOIST CYLINDER, RECN  
SM17-009-009.00 SIX SHEAVE BOOM HEAD  
MACHINERY, RECON

### SM18 SPECIAL ATTACHMENTS

\*\*\*\*\*  
SM18-007-018.00 REELING DRUM, R & I  
SM18-007-038.00 REELING DRUM, TRBL & RECN  
(HIRSCHMANN)

## SM CODE DESCRIPTION

### SM18 SPECIAL ATTACHMENTS

\*\*\*\*\*  
SM18-018-001.00 AIR CONDITIONING SERVICE  
PRECAUTIONS  
SM18-018-004.00 A/C COMPRESSOR, RECON.  
SM18-018-025.00 A/C COMPRESSOR, R & I  
SM18-018-028.00 A/C COMPRESSOR, R & I  
(CARRIER ENGINE)

## How To Use This Manual, General Service Instructions, And Safety Procedures

The following information is provided to help guide the user of this manual. An explanation of how this manual is organized, as well as general information and safety considerations which should be understood when performing any service or maintenance procedure, is given. This information is general in nature and should supplement any of the specific procedures in this manual along with a constant awareness of safety and common sense.

### How To Use This Manual

This Service Manual is a collection of written procedures which are used to service and maintain a specific crane model. The index, which is called a "Keysheet", is used to organize the procedures within this manual and serve as a Table Of Contents as well. Each procedure, in this manual, is written so that it can stand alone and typically covers only one procedure. Procedures are given a numerical designation, or "SM Code" Number, (Example: SM01—005—034.00) which is unique to that procedure and that procedure only. The following is a listing of the general area definitions which are designated by the first digits in the SM Code Number sequence:

### General Area Descriptions

- SM01 — Rubber Tire Lower
- SM02 — Crawler Lower
- SM03 — Upper Revolving Frame & Machinery
- SM04 — Vertical Shafts
- SM05 — Horizontal Shafts
- SM06 — Upper Engine
- SM07 — Hydraulic Power Supply
- SM08 — Angle Boom
- SM09 — Tubular Boom
- SM10 — Tagline Winder
- SM11 — Fairleader
- SM12 — Shovel Attachment
- SM13 — Trench Hoe, Logger & Scraper Attachment & Prop Handler
- SM14 — Cab & House Assembly
- SM15 — Rotascope Attachment (Discontinued)
- SM16 — Wire Rope Requirements
- SM17 — Hydraulic Boom And Attachments
- SM18 — Special Attachments
- SM19 — Diesel Pile Hammer (Discontinued)
- SM20 — Tower, Climbing Assembly, Traveling Base & Gantry (Discontinued)
- SM21 — Log Skidder (Discontinued)
- SM22 — Hydraulic Hammer (Discontinued)

The procedures in this manual are collated by SM Code Number sequence. Use the Keysheet in the front of this manual, the general area descriptions shown previously, and the SM Code title shown on the

Keysheet to find the specific procedure required to service the crane.

Throughout this manual, reference is made to the left, right, front, and rear, pertaining to directions and locations. These reference directions are relative to the operator, sitting in the operator's seat, with the upper directly over the front of the carrier, unless otherwise stated. (Crawler mounted cranes: upper over the front of the crane with travel motors to the rear.)

Danger, warning, and caution captions as well as special notes are used throughout this manual and on the crane to emphasize important and critical instructions. **If any instruction, caution, warning, or danger labels, decals, or plates become lost, damaged, or unreadable, they must be replaced.** Information contained on such labels, decals, and plates is important and failure to follow the information they contain could result in an accident. Replacement labels, decals, and plates can be ordered through a Link-Belt Distributor. For the purpose of this manual, danger, warning, and caution captions and notes are defined as follows:



### DANGER

An operating procedure, practice, etc. which, if not correctly followed, may result in severe personal injury, dismemberment, or loss of life.



### WARNING

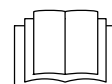
An operating procedure, practice, etc. which, if not correctly followed, may result in personal injury.

### CAUTION

An operating procedure, practice, etc. which, if not correctly followed, may result in damage to, or destruction of, equipment or property.

### NOTES

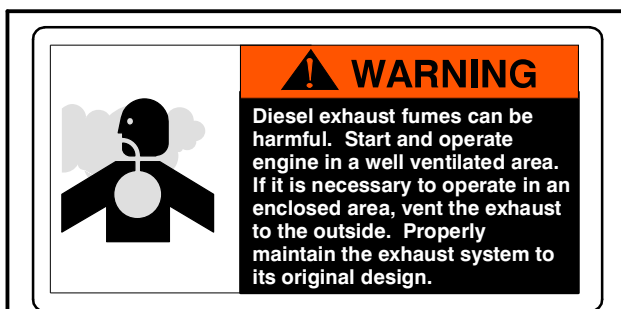
**Note:** An operating procedure step, condition, etc. which is essential in order for the process to be completed properly.



This symbol may appear in manuals or on a label on the crane to alert personnel that additional instructions are included in the crane Operator's Manual.



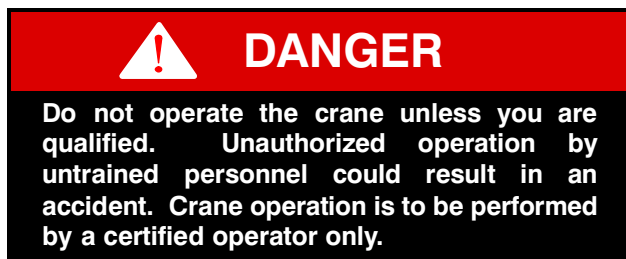
**Figure 1**  
Keep hands and tools clear of moving parts.



**Figure 2**  
Diesel Exhaust Fumes.

## Service Safety And Set Up Guidelines

The following is a list of safety and set up considerations which may apply to any service or maintenance procedure. Review the entire list and understand the type of things you must consider to perform a safe service procedure and then apply these guidelines to each specific service or maintenance procedure.



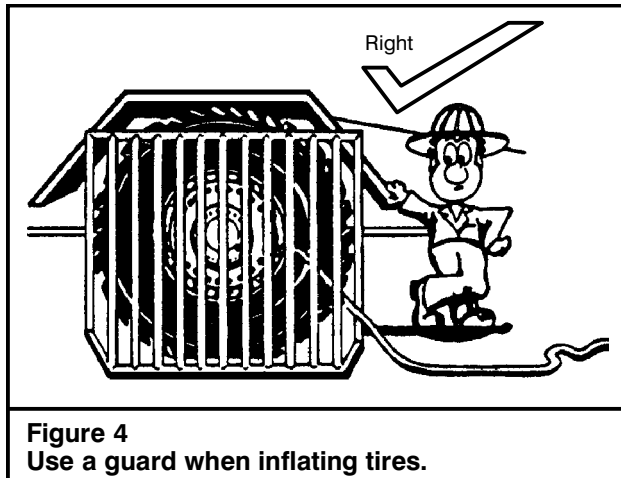
### Service Safety

1. Read and understand the service or maintenance procedure to be performed before beginning work. By reading the procedure ahead of time, you can be sure to have the replacement parts and tools on hand that are required to complete the job.
2. Wear protective gear to prevent injury; hard hat, safety glasses, gloves, steel toed shoes, etc.



**Figure 3**  
Pinch Point Label

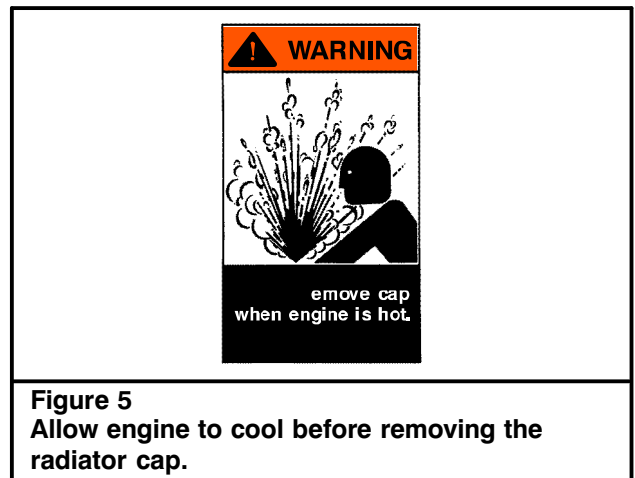
3. First aid supplies and a fire extinguisher should be on the job site to assist in an unexpected situation. The location of these items should be known to all as well as access to a telephone for emergencies.
4. Work in a clean, dry, firm, level area whenever possible. Choosing the correct work site can make a big difference on how well the job goes.
5. Use caution around flammable materials. Be aware of all the materials in the work area which are a threat. Also make others aware of volatile materials; post signs if necessary.
6. Release all trapped pressure in air and hydraulic circuits before disconnecting any line or component. Shutdown the crane, exhaust all pressure from the crane's air reservoir(s) and work the hydraulic control levers back and forth before servicing the crane.
7. Do not disconnect any hydraulic line from a crane which has its attachment in the air. Trapped pressure may be all that is suspending it. Disconnecting a line could release the trapped pressure, causing the attachment to fall. Lower the attachment to the ground or on to its rest before servicing the crane.
8. Do not work on a crane which is in motion. Fans, belts, gear trains, etc. can catch an unexpected person and quickly dismember them.
9. Do not climb on the attachment or other hard to reach areas. If the steps and/or ladders which are installed on the crane do not provide adequate access to the area of the crane which needs servicing, use a step ladder or other approved device.
10. Pinch points exist between the upper and lower frames. Death or dismemberment may result from personnel caught in these points. Learn where these pinch points are and stay clear of the rotating upper frame.



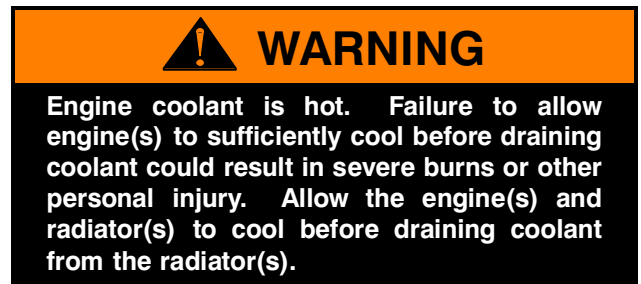
11. If working in a confined area, be sure to provide adequate ventilation when running the engine(s), using toxic solvents, welding, or any other operation which contaminates the fresh air supply.
12. Post a sign in the operator's cab to alert others that the crane is under service. Starting the crane while it is being serviced could severely injure someone. Crane damage could also occur if systems are operated prematurely. Imagine starting the engine(s) before the oil is replaced.
13. Secure access panels, doors, and machinery hoods when in the open position to ensure they do not fall or slam shut due to wind or accidental disruption.
14. Crane parts may be heavy. Always use an appropriate lifting device to support work. Do not attempt to lift an object without knowing its weight. Get help if necessary.
15. Always use a safety rim cage when inflating or deflating tires. Worn or misassembled parts can "explode" from the assembly causing serious injury. Use a safety rim cage, clip on air chuck, and stand aside when inflating or deflating tires.

## Crane Set Up And Disassembly

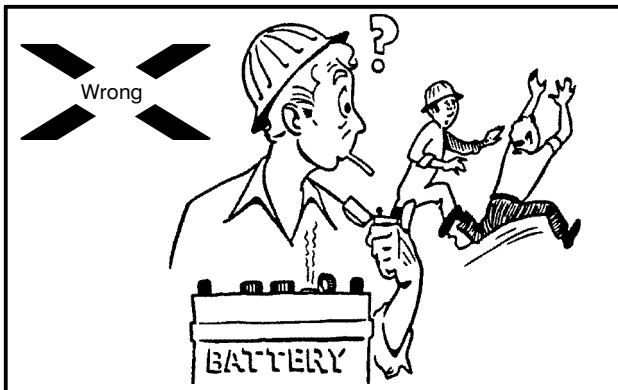
1. Properly park the crane as described in the Operator's Manual. Park the crane in an area which provides the most comfortable working conditions. However, do not park the crane where it will be an obstruction or an intrusion to traffic, coworkers, or to the public. Keep in mind that a major service procedure, or a repair part which requires a long lead time, could have the crane disabled for an extended period of time.
2. Keep in mind the mess which is sometimes caused by a crane under repair. Oil or other fluid leaks should be contained or prevented. Consider your responsibility of maintaining a safe clean work area and a healthy environment for all.



3. If the crane is equipped with outriggers, it may be safer as well as an advantage to raise and level the crane on outriggers to provide easier access to areas underneath. Do not work under a crane that is improperly supported.
4. Shutdown the engine(s) per the instructions given in the Operator's Manual.
5. Post a sign in the operator's cab to alert others that the crane is being serviced.
6. Engines, transmissions, hydraulic systems, etc. generate extreme heat during operation. Temperatures can reach levels which may cause serious burns. Allow the crane to cool before attempting to service it.



7. Pressure is generated inside the engine's cooling system due to the heat transfer process from the engine(s) to the radiator(s). Do not attempt to open or drain the radiator(s) until it/they has/have had sufficient time to cool. Disconnecting hoses before the engine(s) and radiator(s) has/have cooled is even more dangerous. Wait until the engine(s) and radiator(s) have cooled and then drain the radiator(s) before disconnecting any hoses. Properly store or dispose of used coolant.



**Figure 6**  
**Do not use an open flame near the battery.**

### **WARNING**

Solvents and cleaning solutions can be hazardous. Serious personal injury may result from misuse of these products. Read and follow all the manufacturer's recommendations concerning solvents and cleaning solutions.

8. Thoroughly clean the area of the crane which is to be serviced. Dirt or other contamination could enter the hydraulic, air, lubricating system, etc. and cause immediate and/or long term problems. Cleaning the service area not only prevents contamination problems but it also makes working on the crane easier and sometimes problems are more recognizable.
9. Before beginning any removal or disassembly procedure, take a moment to observe critical features of the assembly which may greatly simplify the installation or assembly process. Label electrical, hydraulic, air, or other connections. Index mark pump, motor, and valve sections. Lightly spray paint or count the threads of adjustment screws. Simple steps such as these can minimize the effort needed to put the crane back in service.

### **WARNING**

Hydraulic oil is under pressure and may be hot. A sudden release of hot oil could cause severe burns and/or other serious injury. Shutdown the engine(s) and exhaust all trapped hydraulic pressure from the system before removing any line or component.

10. Hydraulic systems, while operating, are under high pressure. Even after the crane is shutdown these pressures can remain trapped in the hydraulic lines and system components. Some hydraulic systems utilize an air pressurized reservoir which maintains pressure on the system after the crane is shutdown. It is critical that all residual pressure, which is trapped in the system, be neutralized before disconnecting any line or hydraulic component. Use the following techniques to exhaust trapped hydraulic pressure from the system:

- a. Lower the attachment to the boom rest, onto blocking, or onto the ground and shutdown the engine(s).
- b. Open the drain valves on the air system reservoir(s), if equipped, to bleed the air system pressure.
- c. Relieve any residual or precharge pressure by pushing the button on the pressure relief valve, on the hydraulic reservoir, if equipped. Otherwise, loosen the filler cap 1/4 turn.
- d. Turn the ignition switch to the **ON POSITION**, but **DO NOT START THE ENGINE**.
- e. Operate the steering control(s) back and forth repeatedly until steering becomes hard. (On cranes equipped with emergency steering system, it will take several rotations of steering wheel before steering becomes hard.)
- f. Work the crane control levers and outrigger switches, if equipped, back and forth several times.
- g. Turn ignition switch to the **OFF POSITION**.
- h. When pressure is fully relieved, close the drain valves on the air system reservoir(s), if equipped.

### **WARNING**

Air lines may contain high pressure. Opening lines and fittings before relieving air pressure may result in serious injury. Shutdown the engine(s) and drain the air system reservoir(s) before opening any line or fitting.

11. Air system circuits, like hydraulic circuits, contain high pressures also. Although the threat of a hot working fluid does not exist, highly pressurized lines and components can possibly "fly off" if lines are disconnected before the system pressure is relieved. Open the drain valve on the air system reservoir(s) to exhaust system pressure before working on the crane.



## WARNING

Use care not to cause sparks at the battery terminals while disconnecting or connecting the battery. Battery gasses are volatile and could be ignited by a spark or flame causing the battery to explode. Keep the area around the battery well ventilated and disconnect the negative side of the battery first, with the ignition switch “OFF”, to minimize hazard.

Battery posts, terminals, and related accessories contain lead and lead compounds. Eating or smoking with lead residue on hands may cause lead poisoning. Wash hands after handling lead products.

12. When working on electrical circuits, disconnect the battery to minimize shock, burn, spark, or other hazard. When disconnecting the battery, confirm that the ignition switch is in the “OFF” position. Disconnect the negative side of the battery first to minimize the potential for sparks at the battery. Battery gases which are exposed to such sparks, could cause an explosion. Likewise when connecting the battery, confirm that the ignition switch is in the “OFF” position and install the positive cable(s), first and the negative connection(s) last.
13. It is a good practice when disassembling hydraulic components to lay the parts out in the order that they were disassembled. Keeping the parts in this order during disassembly, cleaning, and inspection will aid in the assembly process.

## Welding

1. When making repairs which require welding, disconnect any electronic equipment (such as rated capacity limiters and engine computers) to prevent damage to them. Use the battery disconnect switch(es), if equipped.
2. Be aware of systems adjacent to areas being welded. Residual heat from the welding process could cause damage to other components. Heat may also vaporize materials which may become toxic or volatile.
3. Remove paint from areas to be welded to prevent toxic fumes.
4. The grounding connection should be within 3 feet (1 m) of the welded parts.
5. Connect the ground to the lower, if welding on the lower, or to the upper if welding on the upper. Electrical current through the turntable bearing could cause an arc which could damage it.

6. Do not position the ground connection where seals or bearing, as in transmissions or valves, will be between it and the welded parts.
7. Remove any flammable materials from the area.
8. Use the appropriate setting on the welder for the size of the welding operation. Do not use more than 200 Volts continuously.

## Cleaning And Inspection



## WARNING

Solvents and cleaning solutions can be hazardous. Serious personal injury may result from misuse of these products. Read and follow all the manufacturer's recommendations concerning solvents and cleaning solutions.

1. All components should be thoroughly cleaned with an approved cleaning solvent, air dried and carefully inspected for damage, wear and corrosion.
2. All Loctite® or other sealant residue should be removed from threads of hardware and parts that are going to be reused.
3. All “soft parts”, such as seals, gaskets, back up rings, and o-rings, should be replaced.
4. Replacement of bearings and bushings is generally a good preventive maintenance measure. Even though a bearing or bushing seems to be intact and is functioning properly, its life span is limited. Replacing a simple bearing or bushing while the opportunity is at hand could save a complete component failure later.
5. In the event of severe defects, contact factory personnel for directions whether to repair or replace any major component.

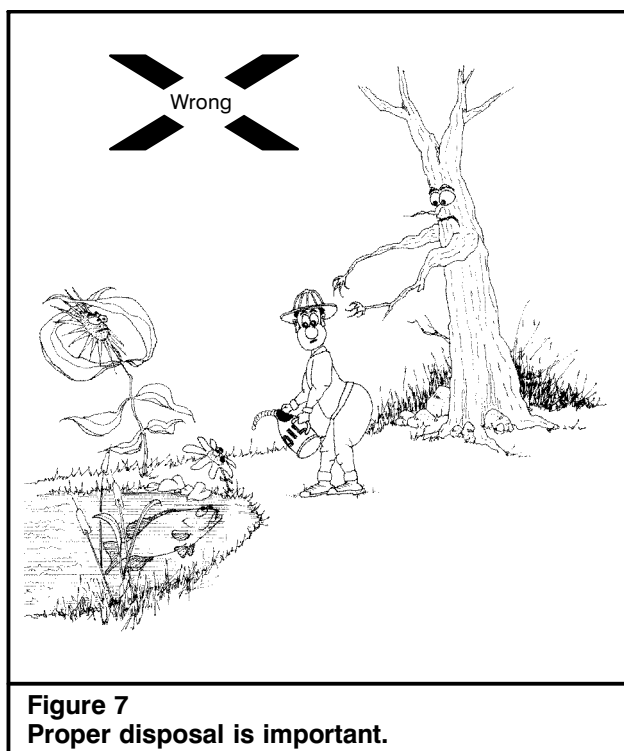
## Crane Assembly

1. Loosely assemble parts to ensure all parts are in place and fasteners started before beginning torquing procedure. Always use a cross torquing sequence to ensure even and uniform installation.

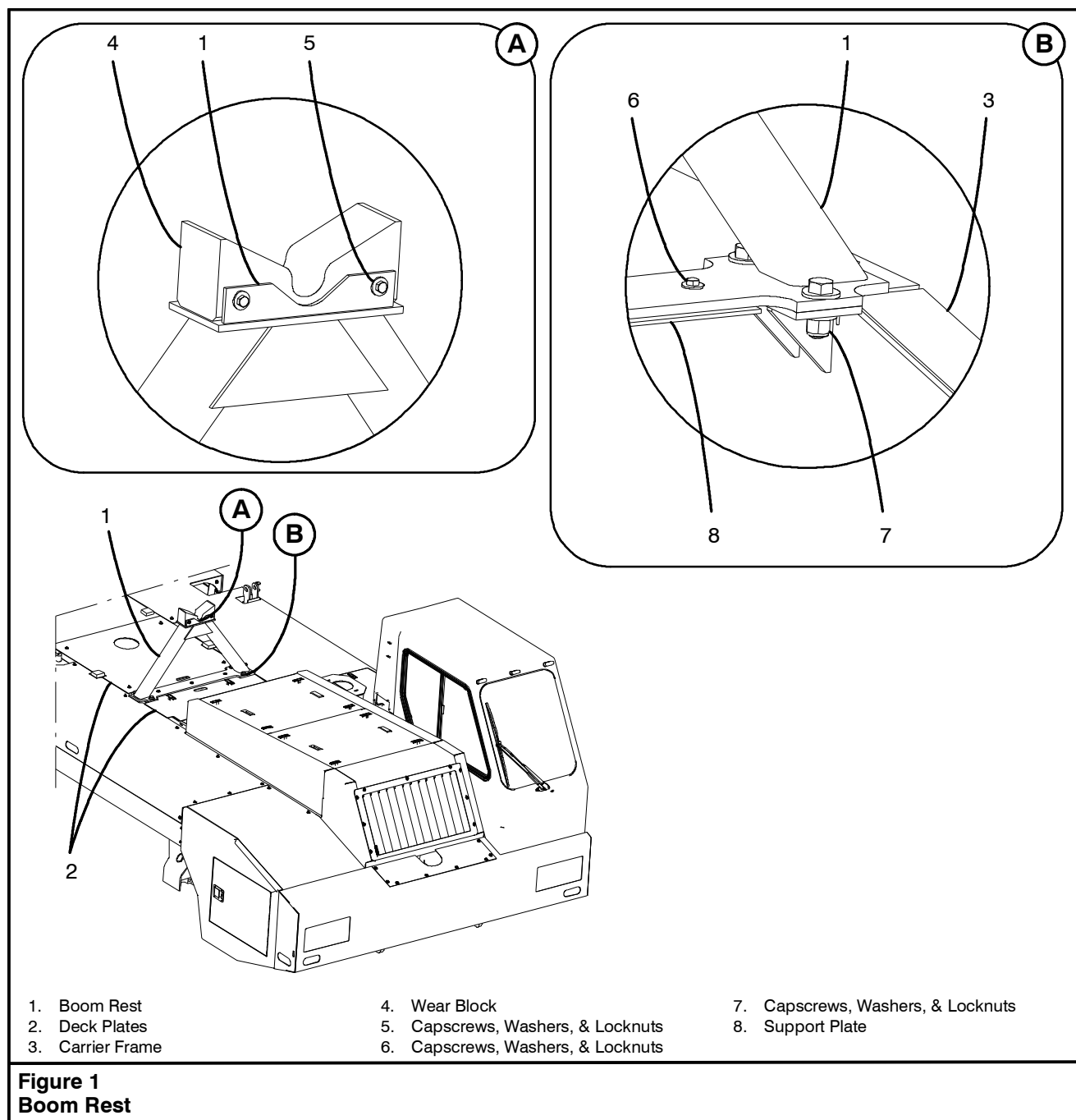


## WARNING

Lubricants, sealants, joint and thread locking compounds, etc. can be hazardous. Serious personal injury may result from misuse of these products. Read and follow all manufacturer's recommendations concerning these products.



2. Unless otherwise stated, torque all fasteners per the instructions given in SM Code Area 18—000.
3. When installing hydraulic hoses, lines, and fittings, use two wrenches to ensure the hoses and lines are not twisted. One wrench must be on the male fitting, the other wrench on the female fitting.
4. Unless otherwise stated, torque all hydraulic fittings per the instructions given in SM Code Area 07—018.
5. Check all fluid levels before returning the crane to service; hydraulic reservoir oil level, transmission fluid level, engine(s) oil level, etc. Add oil as required. See Operator's Manual and/or engine(s) manufacturer's manual(s) for correct type of fluids and procedures.
6. Always replace guards, grilles, and other types of protective shields. Also, be sure that any systems which were disconnected such as load indicating systems, anti-two block devices, control cables, etc. are functioning properly before returning the crane to service.
7. Start the appropriate engine and let it idle for five minutes. Inspect the connections on the hydraulic, air, transmission, etc. lines for leaks. Repair if needed.
8. Check that all hydraulic, air, and electrical functions are operating normally before returning the crane to service.
9. After crane is assembled, refer to the Operator's Manual for any periodic type of adjustments which may have been affected by the service procedure.
10. Properly dispose of any used oils, solvents, cleaners, etc.



## Boom Rest, R & I

This procedure covers the removal and installation of the boom rest.

### Removal

1. Lower, detach, and secure the load, as required.
2. Stabilize the crane for service as follows:
  - a. Park the crane out of the way on a firm and level surface.

- b. Apply the park brake and/or properly block the tires.
- c. Engage the swing park brake or travel swing lock, as required.
- d. Level the crane on fully extended outriggers.
- e. Fully retract and lower the boom over the rear of the carrier.
3. Shutdown the engine and disengage the main hydraulic pump.

4. Check that all control levers are in the neutral position and move the function lockout switch to the "DISABLE" position.

Refer to Figure 1.

5. Remove the deck plates (2) directly in front of and behind the boom rest (1).

**Note: The boom rest assembly weighs approximately 175 lb (80kg).**

6. Using an adequate lifting device, rig the boom rest (1) for removal.
7. Remove the capscrews, washers, and locknuts (7) securing the boom rest (1) to the carrier frame (3).
8. Remove the boom rest (1) from the crane.
9. If necessary, remove the wear block (4) from the top of the boom rest (1) by removing the capscrews, washers, and locknuts (5).
10. If necessary, remove the capscrews, washers, and locknuts (6) to separate the support plate (8) from the boom rest (1).

## Cleaning And Inspection



### WARNING

**Solvents and cleaning solutions can be hazardous. Serious personal injury may result from misuse of these products. Read and follow all the manufacturer's recommendations concerning solvents and cleaning solutions.**

1. All components should be thoroughly cleaned with an approved cleaning solvent, air dried, and carefully inspected.
2. All Loctite®, Permatex®, or other sealant residue should be removed from threads of hardware and the mounting surfaces of parts that are going to be reused. Prior to applying new thread locking compounds or sealants, clean threads and surfaces with Loctite® 7070 Cleaner to ensure best performance of products.

3. Thoroughly inspect all parts for damage, wear, fatigue or stress fractures, and corrosion. Repair or replace as required.
4. In the event of severe defects, contact factory personnel for directions whether to repair or replace any major component.

## Installation



### WARNING

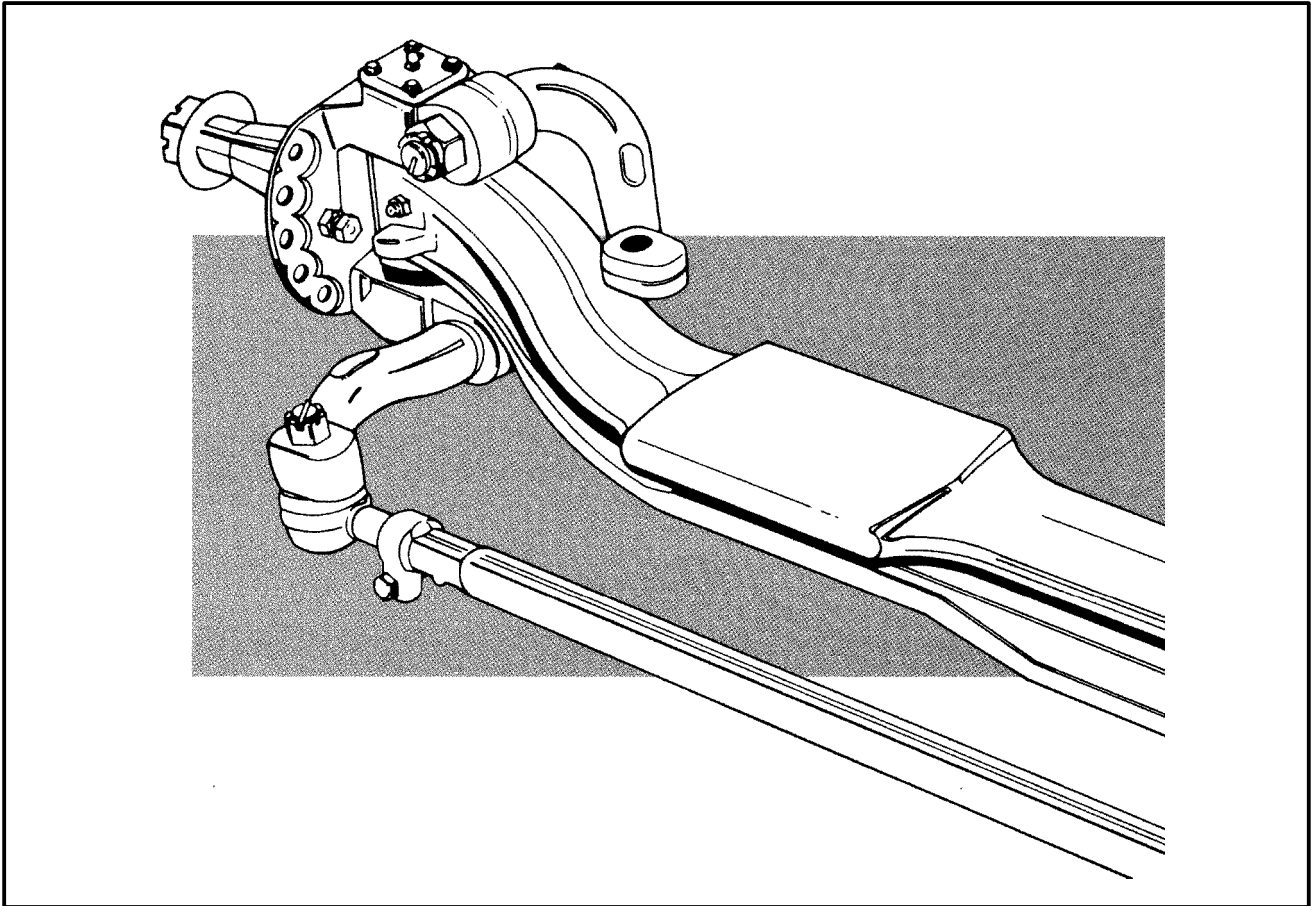
**Lubricants, sealants, joint and thread locking compounds, etc. can be hazardous. Serious personal injury may result from misuse of these products. Read and follow all manufacturer's recommendations concerning these products.**

Refer to Figure 1.

1. If removed, install the support plate (8) to the bottom of the boom rest (1) using the capscrews, washers, and locknuts (6).
2. If removed, position the wear block (4) on the boom rest (1), and install the capscrews, washers, and locknuts (5).

**Note: The boom rest assembly weighs approximately 175 lb (80kg).**

3. Using an adequate lifting device, align the boom rest (1) to the mounts on the carrier frame (3).
4. Secure the boom rest (1) to the carrier frame (3) by installing the capscrews, washers, and locknuts (7).
5. Install the deck plates (2).



## Front Steer Axle, Recondition

This procedure covers the recondition of the front steer axle. For removal and installation procedures, see SM Keysheet Area 1-4.

The following pages are taken directly from Dana® Spicer® Service Manual AXSM-0037 dated March 1992. Axle models 12F3/F4, 13F3/F5, 18F3, 20F4, 22T2/T5, and 24T2/T5 are covered by this information. Pay particular attention to Section 1 of this procedure to correctly identify the specific axle being serviced. Proper identification of the axle is crucial to obtain the correct information to follow from the charted specifications included in this procedure.

Based on the specific application of this axle, Link-Belt literature will supersede any discrepancies in operation, lubrication, maintenance, or service, implied by the axle manufacturer. Any concerns regarding such inconsistencies should be reviewed with a Link-Belt distributor.

If parts are hard to disassemble and assemble, do not use a hammer unless it has a soft face, do not force parts together, they must be free to turn and not bind.

It is a good practice when disassembling complex components to lay the parts out in the order that they were disassembled. Keeping the parts in this order during disassembly, cleaning, and inspection will aid in the assembly process.



### WARNING

**Solvents and cleaning solutions can be hazardous. Serious personal injury may result from misuse of these products. Read and follow all the manufacturer's recommendations concerning solvents and cleaning solutions.**

Thoroughly clean the exterior surface of the axle before beginning the disassembly process.

The description, testing procedures, and specifications contained in this service publication were current at the time of printing.

Eaton Corporation reserves the right to discontinue or modify its models and/or procedures and to change specifications at any time without notice and without incurring obligation.

The recommendations of the vehicle manufacturer should be considered as the primary source of service

information regarding this Eaton product. This manual is intended to be used as a supplement to such information.

Any reference to brand names in this publication is made simply as an example of the types of tools and materials recommended for use and, as such, should not be considered as an endorsement. Equivalents, if available, may be used.

## IMPORTANT NOTICE

The symbol shown below is used throughout this publication to call your attention to areas in which carelessness or failure to follow specific procedures may result in personal injury and/or component malfunction or damage.

Anyone departing from the instructions contained in this publication through procedures used or choice of tools, materials, and parts may jeopardize his personal safety and/or the safety of the vehicle user.



**WARNINGS:** Used in areas where failure to follow listed procedures creates a **high probability of personal injury** to the **servicing technician**.

**CAUTIONS:** Used in areas where failure to follow listed procedures **may cause personal injury due to component damage or subsequent malfunction**.

## SPECIAL NOTICE ON FASTENER TORQUE



THIS SYMBOL IS USED THROUGHOUT THIS MANUAL TO CALL YOUR ATTENTION TO FASTENERS REQUIRING A SPECIAL INSTALLATION TORQUE.

## Section 1: General Information

Axle Identification  
Parts Nomenclature

## Section 2: Periodic Service

### Inspection

- Recommendations and Intervals
- Knuckle Vertical Play Inspection
- Knuckle Pin Fit Inspection
- Tie Rod Inspection
- Wheel Bearing Inspection
- Wheel Alignment Inspection
- Camber

### Inspection (Cont'd)

- Caster
- Toe Setting

### Maintenance / Adjustment

- Knuckle Vertical Play Adjustment
- Wheel Bearing Adjustment
- Steering Stop Adjustment

## Section 3: Axle Overhaul

### Removal / Disassembly

- Steering Knuckle Disassembly
- Knuckle Pin Removal

### Cleaning

### Component Repair/Replacement

- Tie Rod End Replacement
- Ackermann or Steering Arm Replacement
- Knuckle Pin Bushing and Seal Replacement

### Installation / Assembly

- Steering Knuckle Assembly
- Final Assembly
- Fastener Torque Specifications