

1745
Round Baler
REPAIR TIME SCHEDULE

Form Number 4283429M1

Contents

Section	Description
1	Drives
2	Pickup
3	Electrical
4	Tailgate
5	Bale Forming
6	Frame, Wheels and Shields
7	Hydraulics

NOTE: This Repair Time Schedule (RTS) can be used with Repair Time Schedule storage binder supplied separately through the repair parts department.

A. TIME ALLOWANCE

The times listed in this publication are the result of careful study of the operation concerned; they represent the average time ONE trained dealer mechanic, of normal ability has taken to carry out the operation in a typical dealership, using standard workshop tooling and equipment including air tools, located for reasonable access and working conditions. They DO NOT include any traveling to or from the farm or site.

The machine is assumed to be clean and to be bare of any extra equipment or attachment of non "AGCO" manufacture, and delivered to an authorized and duly equipped workshop where trained personnel and spare parts required to perform the operations are immediately available.

The times given include difficulties encountered working on used as opposed to new machines, and are based on methods and recommended tools shown in the workshop manual.

The times are based on a second hand machine in reasonable condition properly maintained using approved parts. Extra time may be required to deal with seized, rusted or damaged parts.

Allowances are included in the operation times quoted for obtaining all tools and parts, cleaning and testing after repair. Diagnostic time is included in the time allowance unless a separate code is listed for diagnostic time.

The times given in this Repair Time Schedule are for a complete job from start to finish, including allowances for intermediate operations.

B. TIMES

All the operating times are presented in hours and the decimal parts of an hour. Decimal times must be used on all warranty claims.

The times given in this repair time schedule are for a complete job from start to finish. Where access has been gained for an adjacent repair only the additional time for the second repair will be accepted and not the total time for the two failures.

C. REVIEW OF TIMES

If you find any improvement in the method which reduces the time of an operation or you find you cannot meet an operation time after more than three attempts using the recommended method, a "Request for Review of Time" form (see next page) must be submitted quoting all relevant details. Photo copy the form and fax it to the following address:

AGCO Corporation
Attn: Technical Services and Support
FAX (620) 327-5713

D. AMENDMENTS

All times contained in this schedule are based on the latest information available at the time of this publication. The right is reserved to publish revision at any time. All operation times are subject to amendment if the design, method or technique changes result in alteration of time taken.

E. REQUEST FOR REVIEW OF TIME SCHEDULE

Request for Review of Time Schedule

Dealer Name: _____ Date: _____

Address: _____

RTS Publication No.: _____ Failure Code No.: _____

Machine Model: _____ Serial No.: _____

We disagree with your time allowance against the above failure code number. We have observed and accurately timed this operation as carried out by a trained mechanic using recommended procedures and special tools. Our findings are detailed below:

Analysis of Time			
Work Performed	Time		Remarks
Remove Component			
Dismantle			
Clean and Inspect			
Obtain Parts and tools			
Reassemble			
Reinstall			
Adjust and test			
TOTAL OF TIME			
Number of mechanics used on job.			

Printed Name: _____ Signed: _____

Fax To:

AGCO Corporation

Attn: Technical Services and Support

(620) 327-5713

BALE FORMING

BELT TENSIONER ROLLER	40
FORMING BELTS AND LACING	41
MESH WRAP BRAKE AND KNIFE	47
MESH WRAP FEED	46
MESH WRAP PAN MOUNTING	50
MESH WRAP SHIELDS	48
MESH WRAP SHIELDS (Continued)	49
ROLLER-LOWER (S.N. AHR02101 THRU AHR02234)	36
ROLLER-LOWER (S.N. AHR02235 AND LATER)	37
ROLLER-UPPER (S.N. AHR02101 THRU AHR02234)	34
ROLLER-UPPER (S.N. AHR02235 AND LATER)	35
TAILGATE ROLLER (S.N. AHR02101 THRU AHR02234)	38
TAILGATE ROLLER (S.N. AHR02235 AND LATER)	39
THREADER	44
TWINE CUTOFF	45
TWINE ROUTING (S.N. AHR02101 THRU AHR02234)	42
TWINE ROUTING (S.N. AHR02235 AND LATER)	43

DRIVES

DRIVE	7
GEARBOX ASSEMBLY (700722701 GEARBOX ASSEMBLY)	8
IMPLEMENT DRIVELINE ASSEMBLY (S.N. AHR02101 THRU AHR02234)	5
IMPLEMENT DRIVELINE ASSEMBLY (S.N. AHR02235 AND LATER)	6
PICKUP DRIVE MOUNTING-LEFT	9
PICKUP DRIVE MOUNTING-RIGHT	10

ELECTRICAL

ACTUATOR ASSEMBLY (700709661 ACTUATOR-LINEAR)	19
CONTROL BOX ASSEMBLY (UPGRADE) (700162991 MONITOR CONTROL BOX ASSEMBLY)	23
CONTROLLER-AUTO TIE (S.N. AHR02101 THRU AHR02234)	26
CONTROLLER-AUTO TIE (TWINE AND MESH) (S.N. AHR02235 AND LATER)	28
CONTROLLER-AUTO TIE (TWINE) (S.N. AHR02235 AND LATER)	27
ELECTRIC THREADER	18
ELECTRIC THREADER CONTROL BOX ASSEMBLY	20
ELECTRICAL CONTROLLER (UPGRADE) (S.N. AHR02101 THRU AHR02234)	21
ELECTRICAL CONTROLLER (UPGRADE) (S.N. AHR02235 AND LATER)	22
ELECTRICAL CONTROLLER-AUTO TIE (S.N. AHR02101 THRU AHR02234)	24
ELECTRICAL CONTROLLER-AUTO TIE (S.N. AHR02235 AND LATER)	25
ELECTRICAL-BALE KICKER	29
ELECTRICAL-TAILLIGHTS (S.N. AHR02101 THRU AHR02234)	15
MESH WRAP ELECTRICAL	17
TAILLIGHT ELECTRICAL-W/OUT MESH WRAP (S.N. AHR02235 AND LATER)	16

FRAME WHEELS AND SHIELDS

HITCH, JACK AND SAFETY CHAIN ASSEMBLY	51
SHIELD AND BELT GUIDE (W/OUT MESH WRAP)	58
SHIELDS (TOP AND FRONT)	52
SHIELDS-FRONT	53
SHIELDS-LEFT (S.N. AHR02101 THRU AHR02234)	54
SHIELDS-LEFT (S.N. AHR02235 AND LATER)	56
SHIELDS-RIGHT (S.N. AHR02101 THRU AHR02234)	55
SHIELDS-RIGHT (S.N. AHR02235 AND LATER)	57
WHEEL, HUB AND AXLE ASSEMBLY (S.N. AHR02101 THRU AHR02234)	59
WHEEL, HUB AND AXLE ASSEMBLY (S.N. AHR02235 AND LATER) (LEFT SIDE SHOWN, RIGHT SIDE OPPOSITE)	60

HYDRAULICS

ALLIGATOR RIVET LACING KIT (700721237 ALLIGATOR RIVET LACING KIT)	75
BALE COUNTER KIT (AK51092 BALE COUNTER KIT)	78
BALE KICKER HYDRAULICS-LEFT	70
BALE KICKER HYDRAULICS-RIGHT	71
BALE KICKER KIT (700719621 HYDRAULIC CYLINDER ASSEMBLY) (Kit Continued)	90
BALE KICKER KIT (700728750 VALVE ASSEMBLY-KICKER) (Kit Continued)	91

HYDRAULICS (CONTINUED)

BALE KICKER KIT (700957454A BALE KICKER KIT) (LEFT STRUT AND MOUNTING)	86
BALE KICKER KIT (KICKER ELECTRICAL) (Kit Continued)	92
BALE KICKER KIT (KICKER HYDRAULICS-LEFT) (Kit Continued)	88
BALE KICKER KIT (KICKER HYDRAULICS-RIGHT) (Kit Continued)	89
BALE KICKER KIT (RIGHT STRUT AND MOUNTING) (Kit Continued)	87
BALE RAMP KIT (AK51270 BALE RAMP KIT)	77
BALE SHAPE KIT (700957455A BALE SHAPE KIT)	85
BALE TENSION VALVE ASSEMBLY (700721402 VALVE ASSEMBLY-BALE TENSION)	69
CONTROL BOX ASSEMBLY (UPGRADE) (700162991 MONITOR CONTROL BOX ASSEMBLY)	81
CONTROLLER UPGRADE KIT (AK51157 CONTROLLER UPGRADE KIT)	82
FIRE EXTINGUISHER KIT (AK50556 FIRE EXTINGUISHER KIT)	76
GATHERING WHEEL KIT (AK51090 GATHERING WHEEL KIT)	79
HARNESS POWER KIT (AK51181 HARNESS POWER KIT)	84
HYDRAULIC CYLINDER ASSEMBLY (700715833 HYDRAULIC CYLINDER ASSEMBLY)	66
HYDRAULIC CYLINDER ASSEMBLY (700719621 HYDRAULIC CYLINDER ASSEMBLY)	73
HYDRAULIC CYLINDER ASSEMBLY (700732413 HYDRAULIC CYLINDER ASSEMBLY)	67
HYDRAULIC SHUTOFF VALVE ASM. (TAILGATE) (700717995 HYDRAULIC SHUTOFF VALVE ASM.)	68
HYDRAULICS-LEFT (S.N. AHR02101 THRU AHR02234)	61
HYDRAULICS-LEFT (S.N. AHR02235 AND LATER)	63
HYDRAULICS-RIGHT (S.N. AHR02101 THRU AHR02234)	62
HYDRAULICS-RIGHT (S.N. AHR02235 AND LATER)	64
HYDRAULICS-TONGUE (S.N. AHR02235 AND LATER)	65
LACING PIN KIT-7 INCH (700721236 LACING PIN KIT-7 INCH)	74
MESH WRAP KIT (700957457A MESH WRAP KIT) (FEED ASSEMBLY)	93
MESH WRAP KIT (ELECTRICAL) (Kit Continued)	98
MESH WRAP KIT (MESH WRAP BRAKE AND KNIFE) (Kit Continued)	94
MESH WRAP KIT (MESH WRAP SHIELDS) (Kit Continued)	96
MESH WRAP KIT (PAN MOUNTING) (Kit Continued)	95
SPINDLE ASSEMBLY (700721838 SPINDLE ASSEMBLY)	80
STARTING ROLL SCRAPER KIT (AK51159 STARTING ROLL SCRAPER KIT)	83
VALVE ASSEMBLY-KICKER (700728750 VALVE ASSEMBLY-KICKER)	72

PICKUP

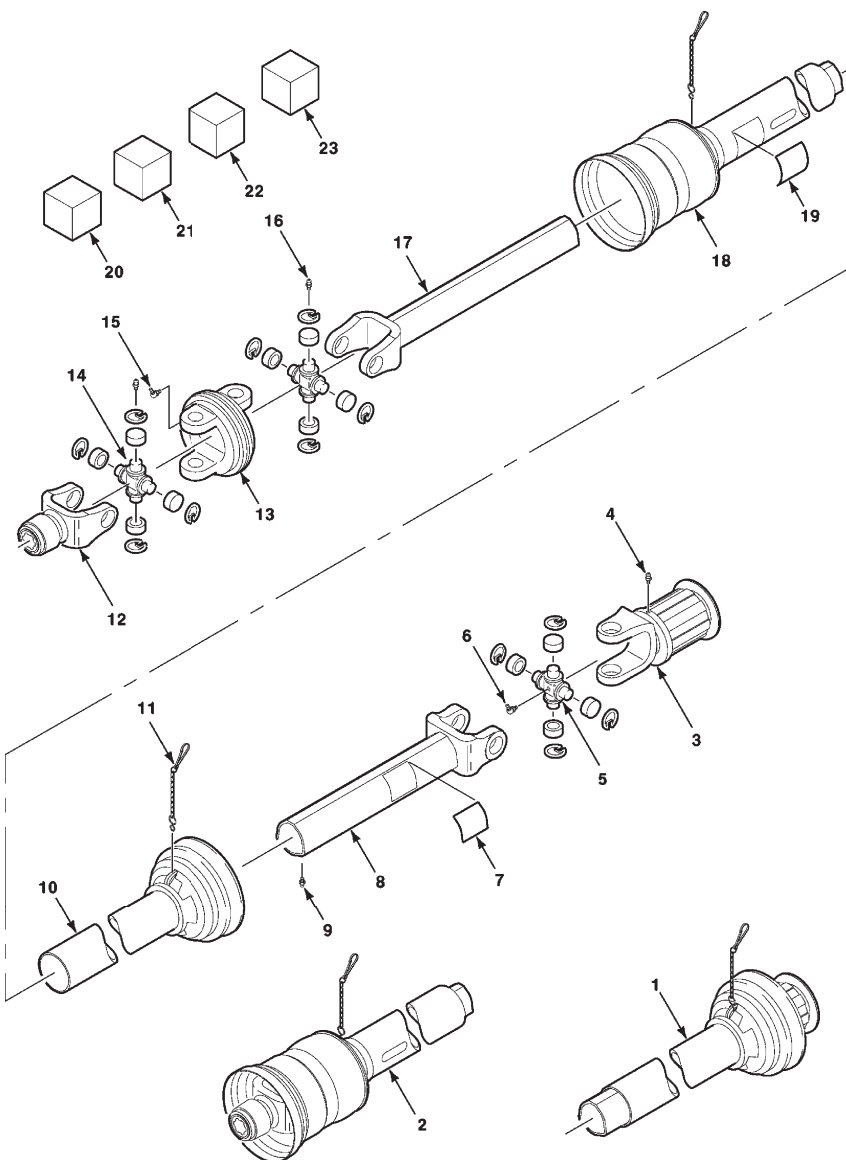
PICKUP FRAME AND WRAPPER	11
ROTOR ASSEMBLY (700160795 ROTOR ASSEMBLY)	12
TINEBAR ASSEMBLY (700160797 TINEBAR ASSEMBLY)	13
WINDGUARD MOUNTING	14

TAILGATE

BALE KICKER-LEFT	32
BALE KICKER-RIGHT	33
TAILGATE LATCH (S.N. AHR02101 THRU AHR02234)	30
TAILGATE LATCH (S.N. AHR02235 AND LATER)	31

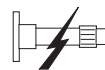
1745 / RB452 ROUND BALER DRIVES

IMPLEMENT DRIVELINE ASSEMBLY
(S.N. AHR02101 THRU AHR02234)



700 722 877-0

Item



Description

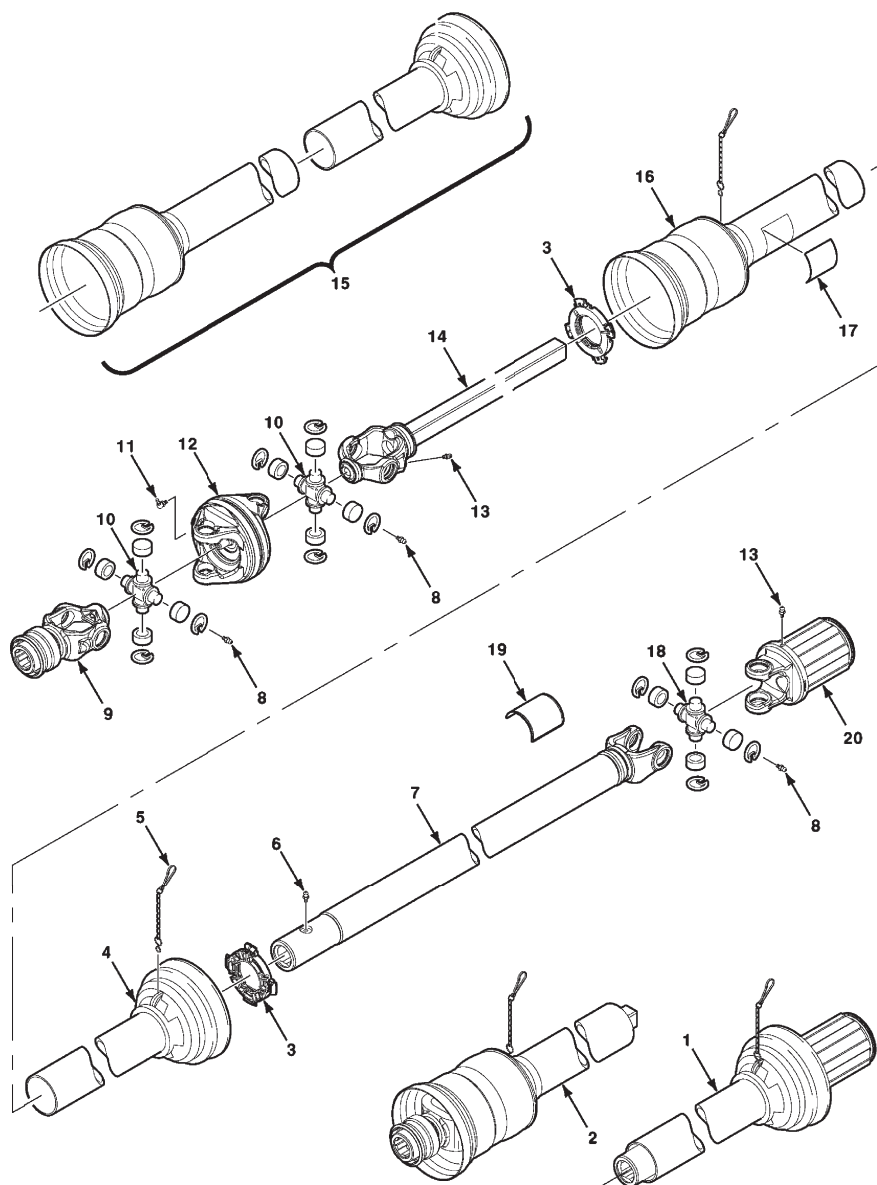
5

1	DR 10 01	0.5	U-JOINT ASM. IMPLEMENT HALF
2	DR 10 02	0.5	U-JOINT ASM. TRACTOR HALF
3	DR 20 01	1.5	CLUTCH ASSEMBLY
5	DR 10 03	0.8	CROSS AND BEARING KIT
8	DR 10 04	1.5	YOKE AND TUBE ASSEMBLY (OUTER)
10	DR 10 05	0.3	GUARD-INNER
12	DR 10 06	0.6	YOKE ASSEMBLY-SPRING LOCK
13	DR 10 07	1.0	HOUSING-CENTER
14	DR 10 08	0.8	CROSS AND BEARING KIT
17	DR 10 09	1.5	YOKE AND TUBE ASSEMBLY (INNER)
18	DR 10 10	0.3	GUARD-OUTER
20	DR 10 11	0.6	SPRING LOCK REPAIR KIT
21	DR 10 12	0.5	QUICK RELEASE REPAIR KIT
22	DR 10 13	0.3	NYLON REPAIR KIT
23	DR 10 14	2.0	CLUTCH REPAIR KIT

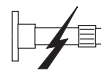
700722877-0

1745 / RB452 ROUND BALER DRIVES

IMPLEMENT DRIVELINE ASSEMBLY (S.N. AHR02235 AND LATER)



Item



Description

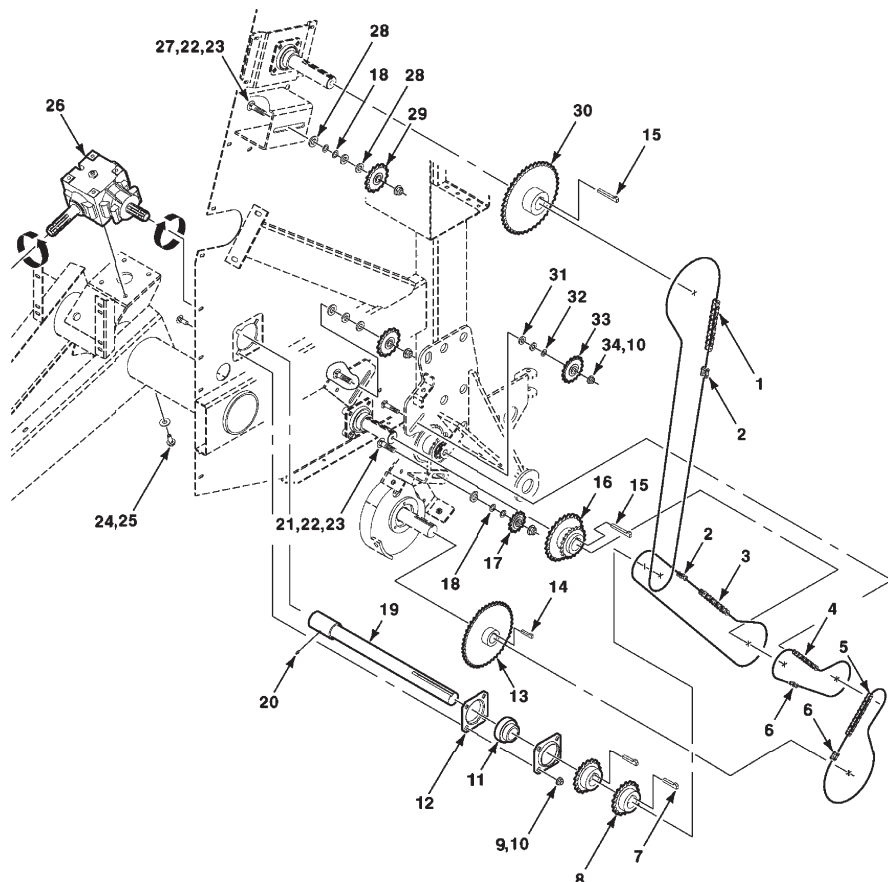
6

- | | | | |
|----|----------|-----|------------------------------------|
| 1 | DR 10 15 | 0.5 | YOKE ASM W/GUARD-IMPLEMENT |
| 2 | DR 10 16 | 0.5 | YOKE ASM W/GUARD-540 RPM |
| 3 | DR 10 13 | 0.3 | NYLON REPAIR KIT-DRIVELINE |
| 4 | DR 10 17 | 0.3 | GUARD-INNER |
| 7 | DR 10 18 | 1.5 | YOKE AND TUBE ASSEMBLY |
| 9 | DR 10 19 | 0.6 | YOKE ASSEMBLY-SPRING LOCK, 1-3/8 6 |
| 10 | DR 10 20 | 0.8 | KIT-CROSS AND BEARING |
| 12 | DR 10 21 | 1.0 | HOUSING-CENTER |
| 14 | DR 10 22 | 1.5 | YOKE AND SHAFT ASSEMBLY |
| 15 | DR 10 23 | 0.6 | GUARD SET |
| 16 | DR 10 24 | 0.3 | GUARD-OUTER |
| 18 | DR 10 25 | 0.8 | KIT-CROSS AND BEARING |
| 20 | DR 20 01 | 1.5 | CLUTCH ASSEMBLY |

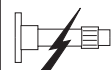
700734653-0

**1745 / RB452 ROUND BALER
DRIVES**

DRIVE



Item



Description

7

1	DR 30 01	0.6	CHAIN-ROLLER, No. 60 (147 Pitches)
3	DR 30 02	0.5	CHAIN-ROLLER, No. 60 (103 Pitches)
4	DR 30 03	0.5	CHAIN-ROLLER, No. 50 (61 Pitches)
5	DR 30 04	0.5	CHAIN-ROLLER, No. 50 (65 Pitches)
8	DR 40 01	0.5	SPROCKET WA-60B18 TOOTH
11	DR 80 01	0.8	BEARING-SPHERICAL
13	DR 40 02	0.5	SPROCKET-50B45 TOOTH
16	DR 40 03	0.6	SPROCKET WA-DOUBLE, 60P26 TOOTH AND 50P21 TOOTH
17	DR 40 04	0.5	SPROCKET-IDLER, 13 TOOTH
19	DR 10 26	1.8	SHAFT WA
26	DR 60 01	1.0	GEARBOX ASSEMBLY (R&R)
29	DR 40 05	0.5	SPROCKET-IDLER 60-15 TOOTH
30	DR 40 06	0.6	SPROCKET WA-60B41 TOOTH
33	DR 40 07	0.5	SPROCKET-IDLER, 50-17 TOOTH

700160439-0