

**8792 / 8776  
Planter  
REPAIR TIME SCHEDULE**

**Form Number 4283441M1**

**Contents**

<b>Section</b>	<b>Description</b>
1	Drives
2	Air Tubes
3	Electrical
4	Row Units
5	Markers
6	Tongue, Frame and Wheels

## A. TIME ALLOWANCE

The times listed in this publication are the result of careful study of the operation concerned; they represent the average time ONE trained dealer mechanic, of normal ability has taken to carry out the operation in a typical dealership, using standard workshop tooling and equipment including air tools, located for reasonable access and working conditions. They DO NOT include any traveling to or from the farm or site.

The machine is assumed to be clean and to be bare of any extra equipment or attachment of non "AGCO" manufacture, and delivered to an authorized and duly equipped workshop where trained personnel and spare parts required to perform the operations are immediately available.

The times given include difficulties encountered working on used as opposed to new machines, and are based on methods and recommended tools shown in the workshop manual.

The times are based on a second hand machine in reasonable condition properly maintained using approved parts. Extra time may be required to deal with seized, rusted or damaged parts.

Allowances are included in the operation times quoted for obtaining all tools and parts, cleaning and testing after repair. Diagnostic time is included in the time allowance unless a separate code is listed for diagnostic time.

The times given in this Repair Time Schedule are for a complete job from start to finish, including allowances for intermediate operations.

## B. TIMES

All the operating times are presented in hours and the decimal parts of an hour. Decimal times must be used on all warranty claims.

The times given in this repair time schedule are for a complete job from start to finish. Where access has been gained for an adjacent repair only the additional time for the second repair will be accepted and not the total time for the two failures.

## C. REVIEW OF TIMES

If you find any improvement in the method which reduces the time of an operation or you find you cannot meet an operation time after more than three attempts using the recommended method, a "Request for Review of Time" form (see next page) must be submitted quoting all relevant details. Photo copy the form and fax it to the following address:

AGCO Corporation  
Attn: Technical Services and Support  
FAX (620) 327-5713

## D. AMENDMENTS

All times contained in this schedule are based on the latest information available at the time of this publication. The right is reserved to publish revision at any time. All operation times are subject to amendment if the design, method or technique changes result in alteration of time taken.

**E. REQUEST FOR REVIEW OF TIME SCHEDULE**

Request for Review of Time Schedule

Dealer Name: \_\_\_\_\_ Date: \_\_\_\_\_

Address: \_\_\_\_\_

RTS Publication No.: \_\_\_\_\_ Failure Code No.: \_\_\_\_\_

Machine Model: \_\_\_\_\_ Serial No.: \_\_\_\_\_

We disagree with your time allowance against the above failure code number. We have observed and accurately timed this operation as carried out by a trained mechanic using recommended procedures and special tools. Our findings are detailed below:

<b>Analysis of Time</b>			
<b>Work Performed</b>	<b>Time</b>		<b>Remarks</b>
Remove Component			
Dismantle			
Clean and Inspect			
Obtain Parts and tools			
Reassemble			
Reinstall			
Adjust and test			
<b>TOTAL OF TIME</b>			
Number of mechanics used on job.			

Printed Name: \_\_\_\_\_ Signed: \_\_\_\_\_

Fax To:

AGCO Corporation

Attn: Technical Services and Support

(620) 327-5713

**AIRTUBES**

AIR DUCTS-CENTER (8776) (30 INCH ROW SPACING) .....	21
AIR DUCTS-CENTER (8792) (36 INCH ROW SPACING) .....	26
AIR DUCTS-CENTER (8792) (38 AND 40 INCH ROW SPACING) .....	31
AIR DUCTS-LEFT CENTER (8776) (30 INCH ROW SPACING) .....	20
AIR DUCTS-LEFT CENTER (8792) (36 INCH ROW SPACING) .....	25
AIR DUCTS-LEFT CENTER (8792) (38 AND 40 INCH ROW SPACING) .....	30
AIR DUCTS-LEFT WING (8776) (30 INCH ROW SPACING) .....	23
AIR DUCTS-LEFT WING (8792) (36 INCH ROW SPACING) .....	28
AIR DUCTS-LEFT WING (8792) (38 AND 40 INCH ROW SPACING) .....	33
AIR DUCTS-RIGHT CENTER (8776) (30 INCH ROW SPACING) .....	22
AIR DUCTS-RIGHT CENTER (8792) (36 INCH ROW SPACING) .....	27
AIR DUCTS-RIGHT CENTER (8792) (38 AND 40 INCH ROW SPACING) .....	32
AIR DUCTS-RIGHT WING (8776) (30 INCH ROW SPACING) .....	24
AIR DUCTS-RIGHT WING (8792) (36 INCH ROW SPACING) .....	29
AIR DUCTS-RIGHT WING (8792) (38 AND 40 INCH ROW SPACING) .....	34
AIR GAUGE AND MOUNTING .....	35
BLOWER MOUNTING .....	36
COMPRESSOR ASSEMBLY (700732694 COMPRESSOR ASSEMBLY) .....	42
COMPRESSOR BOX ASSEMBLY .....	41
PNEUMATIC DOWN FORCE ASSEMBLY (8776) .....	39
PNEUMATIC DOWN FORCE ASSEMBLY (8792) .....	37
PNEUMATIC DOWN FORCE HOSES (8776) .....	40
PNEUMATIC DOWN FORCE HOSES (8792) .....	38

**DRIVES**

CLUTCH ASSEMBLY-POINT ROW (700733559 CLUTCH ASM.-LEFT) (700733560 CLUTCH ASM.-RIGHT) (LEFT SHOWN, RIGHT OPPOSITE) .....	19
GROUND DRIVE CLUTCH-CENTER .....	8
GROUND DRIVE CLUTCH-LEFT .....	7
GROUND DRIVE CLUTCH-RIGHT .....	9
HYDRAULIC DRIVE ASSEMBLY .....	16
POINT ROW CLUTCH (GROUND DRIVE) (ONE ASSEMBLY SHOWN, THREE REQUIRED) .....	17
POINT ROW CLUTCH (HYDRAULIC DRIVE) .....	18
ROW UNIT DRIVE .....	10
SPROCKET ASSEMBLY .....	14
TRANSMISSION (GROUND DRIVE) .....	11
TRANSMISSION DRIVE SPROCKET ASSEMBLY .....	15
TRANSMISSION SPROCKET ASSEMBLY (FRONT CLUSTER) .....	12
TRANSMISSION SPROCKET ASSEMBLY (REAR CLUSTER) .....	13

**ELECTRICAL**

CONSOLE ASSEMBLY (SM400SE) .....	44
GTA ANTENNA AND MOUNTING (OPTIONAL PARTS) .....	48
GTA CONSOLE EXT. HARNESS AND TEST SWITCH .....	51
GTA CONSOLE HARNESS (IMPLEMENT SWITCH) .....	50
GTA I CONSOLE AND MOUNTING .....	46
GTA II CONSOLE AND MOUNTING .....	49
GTA MOUNTING (OPTIONAL PARTS) .....	47
HARNESS ASSEMBLY-LOW POWER (SM400SE) .....	45
ISO PUMP HARNESS (HYDRAULIC DRIVE) .....	69
ISO SYSTEM HARNESS-HYDRAULIC DRIVE .....	61
ISO SYSTEM-HYDRAULIC DRIVE .....	60
LIFT SWITCH AND MOUNTING .....	70
MAGNETIC DISTANCE SENSOR AND MOUNTING .....	58
NON ISO BRIDGE MODULE AND MOUNTING .....	59
RADAR DISTANCE SENSOR AND MOUNTING .....	55
RADAR Y HARNESS .....	57
ROW SENSOR HARNESS-CENTER (8792) (ROWS 5, 6, 7 AND 8) .....	67
ROW SENSOR HARNESS-LEFT (8776) (ROWS 1, 2, 3 AND 4) .....	62
ROW SENSOR HARNESS-LEFT (8792) (ROWS 1, 2, 3 AND 4) .....	66
ROW SENSOR HARNESS-LEFT CENTER (8776) (ROWS 5, 6, 7 AND 8) .....	63
ROW SENSOR HARNESS-RIGHT (8776) (ROWS 13, 14, 15 AND 16) .....	65
ROW SENSOR HARNESS-RIGHT (8776) (ROWS 9, 10, 11 AND 12) .....	64

**ELECTRICAL (CONTINUED)**

ROW SENSOR HARNESS-RIGHT (8792) (ROWS 9, 10, 11 AND 12) .....	68
SENSOR AND TUBE (HIGH RATE) .....	53
SENSOR AND TUBE (SEED SMART) .....	54
STORAGE TUBE (TEST SWITCH) .....	52
TRANSPORT LIGHTS .....	43

**MARKERS**

MARKER (LEFT SIDE SHOWN, RIGHT SIDE OPPOSITE) .....	90
MARKER DISC AND HUB (LEFT SIDE SHOWN, RIGHT SIDE OPPOSITE) .....	91
MARKER MOUNTING (LEFT SIDE SHOWN, RIGHT SIDE OPPOSITE) .....	89

**ROW UNITS**

2 BUSHEL HOPPER AND MOUNTING .....	78
3 BUSHEL HOPPER AND MOUNTING .....	79
CLOSING WHEEL AND MOUNTING (RUBBER/CAST) .....	84
CLOSING WHEEL ASSEMBLY (CAST) (854077 CLOSING WHEEL ASSEMBLY) (LEFT SIDE SHOWN, RIGHT SIDE OPPOSITE) .....	86
CLOSING WHEEL ASSEMBLY (RUBBER) (700727676 CLOSING WHEEL ASSEMBLY) .....	85
DEPTH ADJUSTMENT .....	80
DISC ASSEMBLY (700164107 DISC ASSEMBLY) .....	75
GAUGE WHEEL ASSEMBLY (700727657 GAUGE WHEEL ASSEMBLY) .....	83
GAUGE WHEEL ASSEMBLY-LEFT .....	81
GAUGE WHEEL ASSY-RIGHT .....	82
ROW UNIT CHAIN TIGHTENER .....	73
ROW UNIT LINKAGE AND MOUNTING .....	72
ROW UNIT MOUNTING .....	71
ROW UNIT-LOWER .....	74
SEED DISC IDENTIFICATION CHART .....	77
SEED METER .....	76
SEED METER FUNNEL .....	88
SINGLE CLOSING WHEEL .....	87

**TONGUE, FRAME AND WHEELS**

BLOWER HYDRAULICS (GROUND DRIVE) .....	104
BLOWER HYDRAULICS (HYDRAULIC DRIVE) .....	114
BLOWER INLET KIT (6000797 BLOWER INLET KIT) .....	132
DECALS (SEED RATE CHART AND MOUNTING) .....	128
DRIVE PUMP & MOUNTING (HYDRAULIC DRIVE) .....	102
DUAL BLOWER KIT-GROUND DRIVE (8776) (AIR DUCTS-LEFT WING) (Kit Continued) .....	143
DUAL BLOWER KIT-GROUND DRIVE (8776) (AIR DUCTS-RIGHT WING) (Kit Continued) .....	144
DUAL BLOWER KIT-GROUND DRIVE (8776) (LEFT BLOWER MOUNTING SHOWN-RIGHT SAME) (Kit Continued) .....	142
DUAL BLOWER KIT-GROUND DRIVE (8776) (RIGHT BLOWER HYDRAULICS) (Kit Continued) ....	141
DUAL BLOWER KIT-GROUND DRIVE (8776) LEFT BLOWER HYD, 700957416 DUAL BLOWER KIT-GROUND DRIVE .....	140
DUAL BLOWER KIT-HYD DRIVE (8776) (LEFT BLOWER HYD.-WITH TRACTOR REMOTE) (700957413 DUAL BLOWER KIT) .....	145
DUAL BLOWER KIT-HYD DRIVE (8776) (LEFT BLOWER HYDRAULICS WITH PTO PUMP) (700957414 DUAL BLOWER KIT) .....	147
DUAL BLOWER KIT-HYDRAULIC DRIVE (8776) (LEFT HYDRAULIC COOLER SHOWN-RIGHT SAME) (Kit Continued) .....	149
DUAL BLOWER KIT-HYDRAULIC DRIVE (8776) (RIGHT BLOWER HYD.-WITH TRACTOR REMOTE) (Kit Continued) .....	146
DUAL BLOWER KIT-HYDRAULIC DRIVE (8776) (RIGHT BLOWER HYDRAULICS WITH PTO PUMP) (Kit Continued) .....	148
DUAL BLOWER KIT-HYDRAULIC DRIVE (8776) (TRACTOR REMOTE-HYDRAULIC DRIVE) (Kit Continued) .....	150
FILTER ASSEMBLY (GROUND DRIVE) (W247850B FILTER ASSEMBLY) .....	106
FRAME FOLD HYDRAULICS .....	124
FRAME-CENTER, HINGES AND PINS RIGHT SIDE SHOWN, LEFT SIDE OPPOSITE .....	94

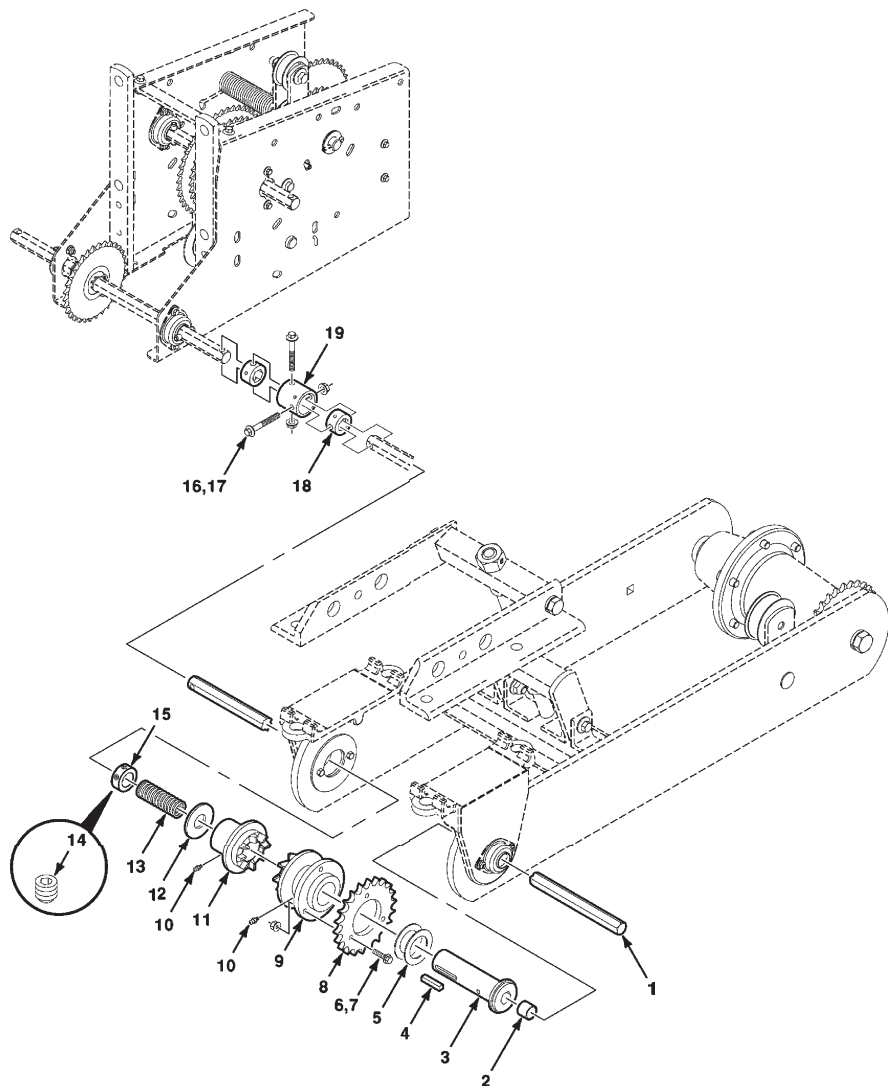
**TONGUE, FRAME AND WHEELS (CONTINUED)**

GRANULAR HERBICIDE KIT (6001044 GRANULAR HERBICIDE KIT) (LEFT ASSEMBLY SHOWN, RIGHT SAME) .....	134
GRANULAR HERBICIDE KIT (LEFT ASSEMBLY SHOWN, RIGHT SAME) (Kit Continued) .....	135
GULL WING LIFT HYDRAULICS .....	122
HOPPER LID HOOK KIT (6001002 HOPPER LID HOOK KIT) .....	131
HYDRAULIC CYLINDER ASSEMBLY (FRAME FOLD) (700735699 HYDRAULIC CYLINDER ASSEMBLY) .....	125
HYDRAULIC CYLINDER ASSEMBLY (GULL WING) (700735264 HYDRAULIC CYLINDER ASSEMBLY) .....	123
HYDRAULIC CYLINDER ASSEMBLY (WHEEL LIFT) (700735534 HYDRAULIC CYLINDER ASSEMBLY) .....	118
HYDRAULIC CYLINDER ASSEMBLY-MARKERS (700735566 HYDRAULIC CYLINDER ASSEMBLY) .....	120
HYDRAULIC FLOW CONTROL VALVE (BLOWER) (N856657 HYDRAULIC VALVE ASSEMBLY) .....	105
HYDRAULIC SEED DRIVE MOTOR AND VALVE (HYDRAULIC DRIVE) .....	108
HYDRAULIC SEED DRIVE VALVE ASSEMBLY (700734461 VALVE ASSEMBLY) .....	109
MAIN DRIVE HYDRAULICS (HYDRAULIC DRIVE) .....	107
MAIN DRIVE HYDRAULICS (HYDRAULIC DRIVE) (8776) .....	111
MAIN DRIVE HYDRAULICS (HYDRAULIC DRIVE) (8792) .....	110
MAINFRAME, WINGS AND LINKAGE (8776) .....	92
MAINFRAME, WINGS AND LINKAGE (8792) .....	93
MARKER AND WHEEL LIFT HYDRAULICS .....	117
MARKER HYDRAULIC SEQUENCE VALVE ASSEMBLY (N851998 SEQUENCE VALVE ASSEMBLY) .....	121
MARKER HYDRAULICS (WITHOUT WHEEL LIFT ASSIST) .....	119
PTO PUMP & MOUNT-GROUND DRIVE (540 RPM)(1000 RPM 1-3/8) .....	100
PTO PUMP ASSEMBLY (540 RPM) (W247844B PTO PUMP ASSEMBLY) .....	101
RESIDUE MANAGER ATTACHMENT KIT (6001245 RESIDUE MANAGER ATTACHMENT KIT) (SHARK TOOTH WHEEL) .....	139
RESIDUE MANAGER ATTACHMENT KIT (6001249 RESIDUE MANAGER ATTACHMENT KIT) (10 INCH WHEEL) .....	137
RESIDUE MANAGER ATTACHMENT KIT (6001250 RESIDUE MANAGER ATTACHMENT KIT) (13 INCH WHEEL) .....	138
ROW UNIT EXTENSION KIT-WITH STEP (6000758 ROW UNIT EXTENSION KIT W/STEP) .....	133
SEED DISC IDENTIFICATION CHART .....	127
SEED METER FUNNEL KIT (6000628 SEED METER FUNNEL KIT) .....	129
SMV EMBLEM AND MOUNTING .....	126
TRACTOR REMOTE & BLOWER DRIVE HYD GROUND DRIVE .....	103
TRACTOR REMOTE (HYDRAULIC DRIVE) .....	113
TRANSMISSION SHIELD KIT (6100057 TRANSMISSION SHIELD KIT) .....	130
VALVE ASSEMBLY (700734033 VALVE ASSEMBLY) .....	112
VALVE ASSEMBLY-BLOWER (700734035 VALVE ASSEMBLY-BLOWER) .....	115
WHEEL ARM ASSY (GROUND AND HYD DRIVE) .....	96
WHEEL LIFT ASSIST FRAME (8776) .....	97
WHEEL LIFT ASSIST HUB ASSEMBLY (700735339 HUB ASSEMBLY) .....	99
WHEEL LIFT ASSIST-LOWER MOUNTING .....	98
WHEEL LIFT HYDRAULICS (WITHOUT MARKERS) .....	116
WING FRAMES-OUTER, HINGES AND PINS LEFT SIDE SHOWN, RIGHT SIDE OPPOSITE .....	95

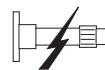


# 8776 / 8792 STACK FOLD PLANTER DRIVES

## GROUND DRIVE CLUTCH-LEFT



Item



Description

7

1	DR 10 01	.75	SHAFT-HEX, 3/4 X 39 OR 44 INCH
2	DR 10 02	.75	SPACER-SLEEVE, CLUTCH
3	DR 10 03	.75	SLEEVE-CLUTCH
8	DR 40 01	1.0	SPROCKET-No. 50 X 22 TOOTH
9	DR 40 02	1.0	HUB-SPROCKET, CLUTCH
11	DR 40 03	1.0	HUB-DRIVE
13	DR 10 05	1.0	SPRING-COMPRESSION
15	DR 10 06	.50	COLLAR ASSEMBLY-LOCK
18	DR 10 07	.50	ADAPTER-COUPLER
19	DR 10 08	.50	COUPLING-SEED SHAFT

700174309-1