

9635 WINDROWER REPAIR TIME SCHEDULE

Form Number 4283096M2

Contents

Section	Description
1	Electrical
2	Engine
3	Engine Accessories
4	Frame, Wheels and Shields
5	Hydraulics
6	Steering

*NOTE: This Repair Time Schedule (RTS) can be used with Repair Time
Schedule storage binder supplied separately through the repair parts department.*

A. TIME ALLOWANCE

The times listed in this publication are the result of careful study of the operation concerned; they represent the average time ONE trained dealer mechanic, of normal ability has taken to carry out the operation in a typical dealership, using standard workshop tooling and equipment including air tools, located for reasonable access and working conditions. They DO NOT include any traveling to or from the farm or site.

The machine is assumed to be clean and to be bare of any extra equipment or attachment of non "AGCO" manufacture, and delivered to an authorized and duly equipped workshop where trained personnel and spare parts required to perform the operations are immediately available.

The times given include difficulties encountered working on used as opposed to new machines, and are based on methods and recommended tools shown in the workshop manual.

The times are based on a second hand machine in reasonable condition properly maintained using approved parts. Extra time may be required to deal with seized, rusted or damaged parts.

Allowances are included in the operation times quoted for obtaining all tools and parts, cleaning and testing after repair. Diagnostic time is included in the time allowance unless a separate code is listed for diagnostic time.

The times given in this Repair Time Schedule are for a complete job from start to finish, including allowances for intermediate operations.

B. TIMES

All the operating times are presented in hours and the decimal parts of an hour. Decimal times must be used on all warranty claims.

The times given in this repair time schedule are for a complete job from start to finish. Where access has been gained for an adjacent repair only the additional time for the second repair will be accepted and not the total time for the two failures.

C. REVIEW OF TIMES

If you find any improvement in the method which reduces the time of an operation or you find you cannot meet an operation time after more than three attempts using the recommended method, a "Request for Review of Time" form (see next page) must be submitted quoting all relevant details. Photo copy the form and fax it to the following address:

AGCO Corporation
Attn: Product Reliability
FAX (620) 327-5713

D. AMENDMENTS

All times contained in this schedule are based on the latest information available at the time of this publication. The right is reserved to publish revision at any time. All operation times are subject to amendment if the design, method or technique changes result in alteration of time taken.

E. REQUEST FOR REVIEW OF TIME SCHEDULE

Request for Review of Time Schedule

Dealer Name: _____ Date: _____

Address: _____

RTS Publication No.: _____ Failure Code No.: _____

Machine Model: _____ Serial No.: _____

We disagree with your time allowance against the above failure code number. We have observed and accurately timed this operation as carried out by a trained mechanic using recommended procedures and special tools. Our findings are detailed below:

Analysis of Time			
Work Performed	Time		Remarks
Remove Component			
Dismantle			
Clean and Inspect			
Obtain Parts and tools			
Reassemble			
Reinstall			
Adjust and test			
TOTAL OF TIME			
Number of mechanics used on job.			

Printed Name: _____ Signed: _____

Fax To:
 AGCO Corporation
 Attn: Product Reliability
 (620) 327-5713

ELECTRICAL

CAB LIGHTS (REAR)	28
CAB LIGHTS (UPPER FRONT)	27
CONSOLE PANEL WIRING	21
CONSOLE WIRE HARNESS	20
CONSOLE WIRING HARNESS-LOWER	23
CONTROL FRAME AND STEERING CABLE	22
CONTROL HANDLE AND MOUNTING	24
CONTROL HANDLE ASSEMBLY	25
CONTROL WIRING AND HARNESS	19
ELECTRONIC CONTROL (FRONT)	29
ELECTRONIC CONTROL (REAR)	30
FLASHER LIGHT MOUNTING	36
HEATER AND AIR COND. CONTROL PANEL	26
HYDRAULIC VALVE WIRING HARNESS	35
MONITOR MOUNTING	18
TRACTOR WIRING	31
TRACTOR WIRING-Continued	32

ENGINE

ALTERNATOR	143
COOLANT PUMP	139
CRANKSHAFT	132
CYLINDER HEAD	134
ENGINE	129
ENGINE OVERHAUL PARTS	145
ENGINE WIRING	142
ENGINE-GEAR HOUSING	130
FLYWHEEL AND HOUSING	131
FUEL FILTER	141
FUEL PUMP	140
INLET AND EXHAUST MANIFOLD	135
OIL AND SUMP	137
OIL FILTER	138
STARTER ASSEMBLY	144
TURBO AND PIPING	136
VALVE MECHANISM	133

ENGINE ACCESSORIES

AIR CLEANER ASSEMBLY	12
AIR CLEANER, HOSE AND MOUNTING	11
CHARGE AIR COOLER MOUNTING	14
CHARGE AIR COOLER MOUNTING-Continued	15
ENGINE EXHAUST AND MOUNTING	10
ENGINE MOUNTING AND ACCESSORIES	7
FUEL LINE MOUNTING	17
FUEL TANK AND MOUNTING	16
RADIATOR, HOSES AND MOUNTING	13
U-JOINT ASSEMBLY (FRONT)	8
U-JOINT ASSEMBLY (REAR)	9

FRAME, WHEELS AND SHIELDS

AIR CONDITIONER AND HEATER	72
AIR CONDITIONER FILTER	74
AIR CONDITIONER MOUNTING	71
AUXILIARY SEAT	63
BATTERY BOXES AND MOUNTING	83
CAB FRAME, MIRRORS AND SHIELDS (S.N. HS46101 THRU HT46598)	48
CAB FRAME, MIRRORS AND SHIELDS (S.N. HT46599 AND LATER)	49
CAB INSULATION (S.N. HS46101 THRU HT46598)	61
CAB MOUNTING	50
CAB SUSPENSION	51
CAB UPHOLSTERY	60
CAP ASSEMBLY	55
CONDENSER AND COMPRESSOR MOUNTING	73

FRAME, WHEELS AND SHIELDS (CONTINUED)

DOOR ASSEMBLY	53
DOOR ASSEMBLY (LEFT AND RIGHT)	80
DOOR MOUNTING	79
FAN SHROUD AND OIL COOLER SUPPORT	76
FRONT AND REAR COVERS	45
FRONT WHEEL (LEFT AND RIGHT)	88
GLASS ASSEMBLY (RIGHT AND REAR)	54
HEADLINER AND HINGE MOUNTING	56
HOOD	77
HOOD MOUNTING	78
INSULATION (S.N. HT46599 AND LATER)	62
LIFT ARM AND FLOTATION (LEFT)	84
LIFT ARM AND FLOTATION (RIGHT)	85
PLATFORM AND RAILS (RIGHT)	47
PLATFORM AND STEPS (LEFT)	46
RADIATOR SUPPORT	75
RADIO AND SPEAKER MOUNTING	59
ROTARY SCREEN	81
ROTARY SCREEN-Continued	82
SEAT ASSEMBLY (700725041 SEAT ASSEMBLY) (S.N. HS46101 THRU HT46598)	66
SEAT ASSEMBLY (700732935 SEAT ASSEMBLY) (S.N. HT46599 AND LATER)	70
SEAT ASSEMBLY-Continued (700725041 SEAT ASSEMBLY) (S.N. HS46101 THRU HT46598)	67
SEAT MOUNTING (S.N. HS46101 THRU HT46598)	64
SEAT MOUNTING (S.N. HT46599 AND LATER)	65
STEERING COLUMN	58
STEERING COLUMN SHIELDS AND MOUNTING	57
TAIL WHEEL AND AXLE-LEFT	86
TAIL WHEEL AND AXLE-RIGHT	87
TAIL WHEEL AND HUB	90
WINDSHIELD AND MOUNTING	52

HYDRAULICS

BRAKE ASSEMBLY-LEFT	98
BRAKE ASSEMBLY-RIGHT	99
COUPLER KIT-HEADER	124
COUPLER KIT-TRACTOR	125
CYLINDER STOP (LEFT)	118
CYLINDER STOP (RIGHT)	119
EASY ATTACH KIT (HEADER ANGLE TILT)	120
GEARCASE ASSEMBLY	94
GEARCASE COOLER	117
HEADER DRIVE	111
HEADER DRIVE PUMP ASSEMBLY	112
HEADER LIFT HYDRAULICS	106
HITCH KIT	126
HYDRAULIC ACTUATOR MOUNTING	115
HYDRAULIC CHARGE	113
HYDRAULIC CYLINDER ASSEMBLY	116
HYDRAULIC CYLINDER ASSEMBLY-LEFT	109
HYDRAULIC CYLINDER ASSEMBLY-RIGHT	110
HYDRAULIC DRIVE AND BRAKES	91
HYDRAULIC DRIVE AND BRAKES-Continued	92
HYDRAULIC HEADER ANGLE TILT	114
HYDRAULIC MASTER CYLINDER ASSEMBLY-LEFT	107
HYDRAULIC SLAVE CYLINDER ASSEMBLY-RIGHT	108
HYDRAULIC STEERING	105
HYDRAULIC SUPPLY AND RETURN (FRONT)	100
HYDRAULIC SUPPLY AND RETURN (REAR)	102
HYDRAULIC VALVE ASSEMBLY	96
MANIFOLD ASSEMBLY	103
OFFSET TAILWHEEL KIT	128
OIL FILTER ASSEMBLY	104
OIL RESERVOIR AND MOUNTING	101

HYDRAULICS (CONTINUED)

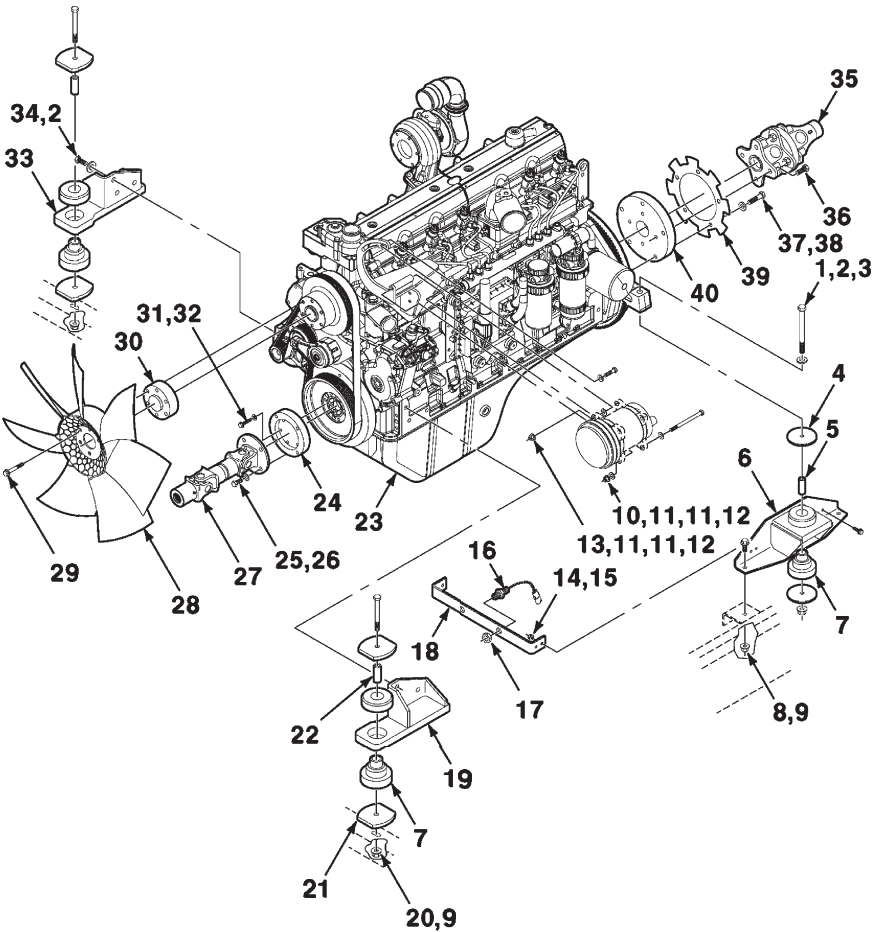
PLANETARY GEARBOX ASSEMBLY	95
RADIO KIT-AM/FM, CASSETTE W/WEATHERBAND	122
RADIO KIT-AM/FM, WITH CASSETTE	123
TRANSMISSION ASSEMBLY	93
WEIGHT BRACKET KIT	127
WHEEL DRIVE MOTOR ASSEMBLY	97
WINDSHIELD WIPER KIT	121

STEERING

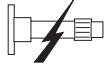
BRAKE AND NEUTRAL LOCK	37
HYDRAULIC CYLINDER ASSEMBLY	38
HYDRAULIC SERVO-CONTROL ASSEMBLY	40
STEERING AND MOUNTING	39
STEERING AND MOUNTING-Continued	42
STEERING ASSEMBLY	44
STEERING YOKE ASSEMBLY	43
TENSIONER ASSEMBLY	41

WINDROWERTRACTOR
ENGINE ACCESSORIES

ENGINE MOUNTING AND ACCESSORIES



Item



Description

7

6	EA 20 05	0.7	REAR ENGINE MOUNTING BRACKET
7	EA 20 04	1.3	MOTOR MOUNT
16	EL 50 30	0.2	ENGINE RPM SENSOR
18	EL 50 09	0.2	SENSOR SUPPORT
19	EA 20 03	0.7	LH FRONT ENGINE MOUNTING BRACKET
23	51 06 00	7.0	ENGINE ASSEMBLY
24	PD 20 08	1.2	FRONT DRIVELINE ADAPTER
27	PD 20 01	0.7	U-JOINT ASSEMBLY-FRONT
28	EA 10 15	0.7	FAN
30	EA 10 16	0.7	FAN SPACER
33	EA 20 01	0.7	RH FRONT ENGINE MOUNTING BRACKET
35	PD 20 02	0.7	U-JOINT ASSEMBLY-REAR
39	EA 20 02	1.2	SENSOR DISC
40	PD 20 03	1.2	ADAPTER

700165255-0