

## A. TIME ALLOWANCE

The times listed in this publication are the result of careful study of the operation concerned; they represent the average time ONE trained Dealer mechanic, of normal ability has taken to carry out the operation in a typical Dealership, using standard workshop tooling and equipment including air tools, located for reasonable access and working conditions. They DO NOT include any traveling to or from the farm or site.

The machine is assumed to be clean and to be bare of any extra equipment or attachment of non "AGCO" manufacture, and delivered to an authorized and duly equipped workshop where trained personnel and spare parts required to perform the operations are immediately available.

The times given include difficulties encountered working on used as opposed to new machines, and are based on methods and recommended tools shown in the workshop manual.

The times are based on a second hand machine in reasonable condition properly maintained using approved parts. Extra time may be required to deal with seized, rusted or damaged parts.

Allowances are included in the operation times quoted for obtaining all tools and parts, cleaning and testing after repair. Diagnostic time is included in the time allowance unless a separate code is listed for diagnostic time.

The times given in this Repair Time Schedule are for a complete job from start to finish, including allowances for intermediate operations.

## B. TIMES

All the operating times are presented in hours and the decimal parts of an hour. Decimal times must be used on all warranty claims.

The times given in this repair time schedule are for a complete job from start to finish. Where access has been gained for an adjacent repair only the additional time for the second repair will be accepted and not the total time for the two failures.

## C. REVIEW OF TIMES

If you find any improvement in the method which reduces the time of an operation or you find you cannot meet an operation time after more than three attempts using the recommended method, a "Request for Review of Time" form (see next page) must be submitted quoting all relevant details. Photo copy the form and fax it to the following address:

AGCO Corporation  
Attn: Product Reliability  
FAX (620) 327-5713

## D. AMENDMENTS

All times contained in this schedule are based on the latest information available at the time of this publication. The right is reserved to publish revision at any time. All operation times are subject to amendment if the design, method or technique changes result in alteration of time taken.

**E. REQUEST FOR REVIEW OF TIME SCHEDULE**

Request for Review of Time Schedule

Dealer Name: \_\_\_\_\_ Date: \_\_\_\_\_

Address: \_\_\_\_\_

RTS Publication No.: \_\_\_\_\_ Failure Code No.: \_\_\_\_\_

Machine Model: \_\_\_\_\_ Serial No.: \_\_\_\_\_

We wish to query your time allowance against the above failure code number and confirm that we have observed and accurately timed this operation as carried out by a trained mechanic using recommended procedures and special tools, our findings are detained below:

<b>Analysis of Time</b>			
<b>Work Performed</b>	<b>Time</b>		<b>Remarks</b>
Remove Component			
Dismantle			
Clean and Inspect			
Obtain Parts and tools			
Reassemble			
Reinstall			
Adjust and test			
<b>TOTAL OF TIME</b>			
Number of mechanics used on job.			

Printed Name: \_\_\_\_\_ Signed: \_\_\_\_\_

Fax To:  
 AGCO Corporation  
 Attn: Product Reliability  
 (620) 327-5713

**ACCESSORIES**

BUCKETS .....	14
STABILIZER PADS .....	15

**BASE MACHINE**

3-POINT MOUNT .....	8
HYDRAULIC CYLINDERS & HOSES .....	6
MAIN FRAME .....	5
SUBFRAME MOUNTING KIT .....	7

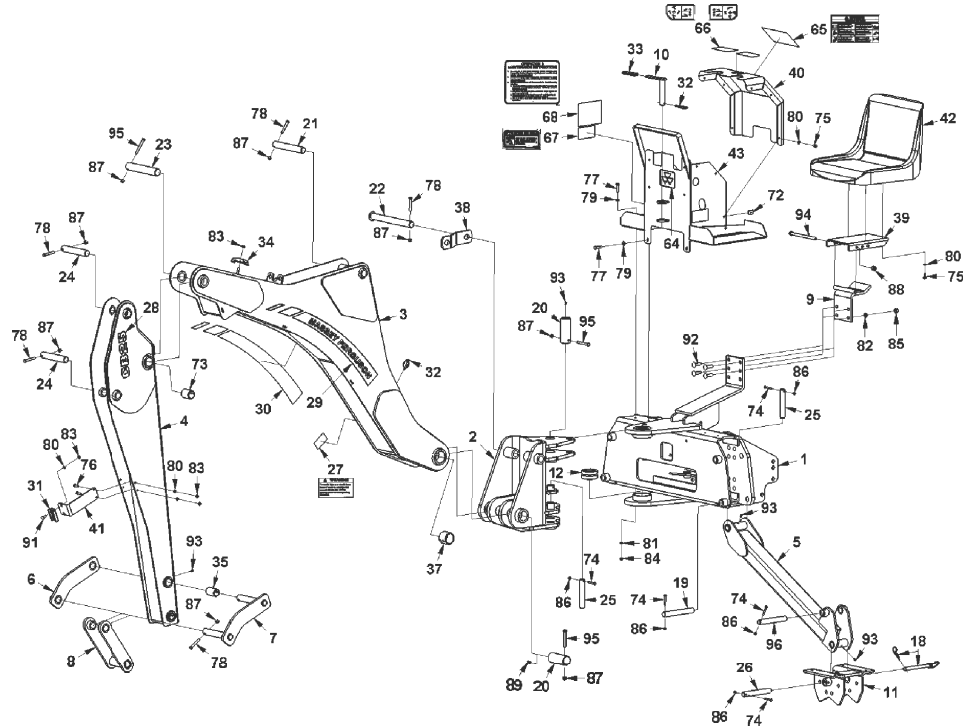
**HYDRAULICS**

CYLINDER ASSY BOOM .....	11
CYLINDER ASSY BUCKET, DIPPER & STABILIZER .....	10
CYLINDER ASSY SWING .....	9
HYDRAULIC KIT .....	12
VALVE ASSY .....	13



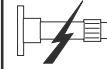
# BACKHOE BASE MACHINE

## MAIN FRAME



7689100A

Item

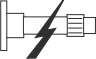



Description

5

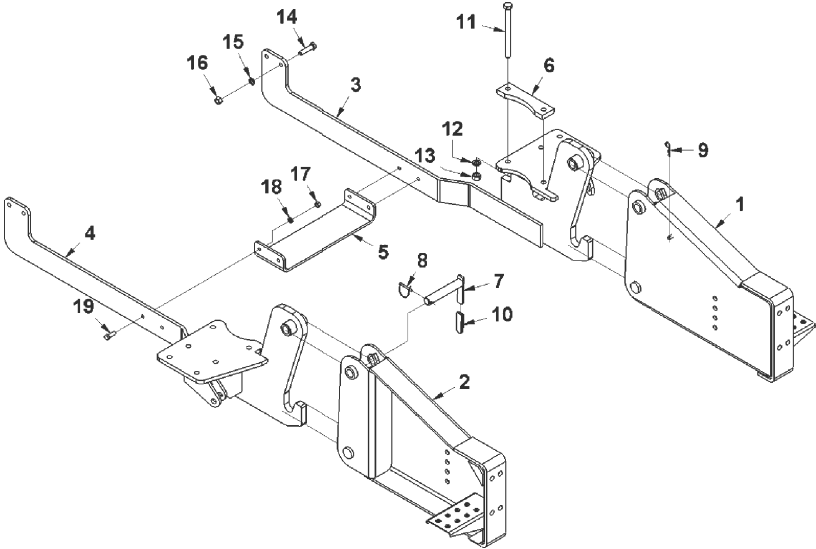
-	46 01 00	0.3	R & R BACKHOE
1	46 01 01	6.0	MAIN FRAME
2	46 01 02	4.5	KINGPOST
3	46 01 03	3.5	BOOM
4	46 01 04	2.5	DIPPERSTICK
5	46 01 05	1.5	STABILIZER ARM
7	46 01 06	0.8	PIN LINK
8	46 01 07	1.0	CONNECTING LINK
9	46 01 08	0.4	SEAT MOUNT
11	46 01 09	0.4	STABILIZER FOOT
12	46 01 10	2.0	BEARING
19	46 01 11	0.2	PIN
20	46 01 12	2.0	PIN
29	46 01 13	0.2	DECAL
35	46 01 14	1.0	BUSHING
37	46 01 15	1.0	BUSHING
40	46 01 16	0.5	COVER PANEL
42	46 01 17	0.3	SEAT
43	46 01 18	2.0	FRONT PANEL
93	46 01 19	0.1	GREASE FITTING

7689100A

BACKHOE BASE MACHINE	Item			Description	6
<div data-bbox="21 251 367 276" data-label="Section-Header">HYDRAULIC CYLINDERS &amp; HOSES</div> <div data-bbox="21 633 955 1307" data-label="Diagram"> </div> <div data-bbox="787 1502 892 1526" data-label="Text">7689100B</div>	<div data-bbox="1060 267 1123 1185" data-label="List-Group"> <ul style="list-style-type: none"> <li>13</li> <li>14</li> <li>15</li> <li>16</li> <li>17</li> <li>44</li> <li>51</li> <li>51</li> <li>52</li> <li>52</li> <li>53</li> <li>53</li> <li>54</li> <li>54</li> <li>55</li> <li>55</li> <li>56</li> <li>56</li> <li>57</li> <li>57</li> <li>58</li> <li>58</li> <li>59</li> <li>59</li> <li>60</li> <li>60</li> <li>61</li> <li>61</li> <li>62</li> <li>62</li> <li>63</li> <li>63</li> </ul> </div>	<div data-bbox="1134 267 1228 1185" data-label="List-Group"> <ul style="list-style-type: none"> <li>46 03 00</li> <li>46 03 01</li> <li>46 03 02</li> <li>46 03 03</li> <li>46 03 04</li> <li>46 03 05</li> <li>46 03 06</li> <li>46 03 07</li> <li>46 03 06</li> <li>46 03 07</li> <li>46 03 06</li> <li>46 03 07</li> <li>46 03 06</li> <li>46 03 07</li> <li>46 03 06</li> <li>46 03 07</li> <li>46 03 06</li> <li>46 03 07</li> <li>46 03 06</li> <li>46 03 07</li> <li>46 03 34</li> <li>46 03 35</li> <li>46 03 34</li> <li>46 03 35</li> <li>46 03 06</li> <li>46 03 07</li> <li>46 03 06</li> <li>46 03 07</li> <li>46 03 06</li> <li>46 03 07</li> <li>46 03 06</li> <li>46 03 07</li> </ul> </div>	<div data-bbox="1260 267 1302 1185" data-label="List-Group"> <ul style="list-style-type: none"> <li>0.8</li> <li>0.5</li> <li>1.0</li> <li>0.5</li> <li>0.5</li> <li>3.5</li> <li>0.4</li> <li>0.1</li> <li>0.4</li> <li>0.1</li> <li>0.4</li> <li>0.1</li> <li>0.4</li> <li>0.1</li> <li>0.4</li> <li>0.1</li> <li>0.4</li> <li>0.1</li> <li>0.4</li> <li>0.1</li> <li>0.9</li> <li>0.6</li> <li>0.9</li> <li>0.6</li> <li>0.4</li> <li>0.1</li> <li>0.4</li> <li>0.1</li> <li>0.4</li> <li>0.1</li> <li>0.4</li> <li>0.1</li> </ul> </div>	<div data-bbox="1312 267 1837 1185" data-label="List-Group"> <ul style="list-style-type: none"> <li>SWING CYLINDER (SEE BREAKDOWN)</li> <li>BUCKET CYLINDER (SEE BREAKDOWN)</li> <li>BOOM CYLINDER (SEE BREAKDOWN)</li> <li>DIPPER CYLINDER (SEE BREAKDOWN)</li> <li>STABILIZER CYLINDER (SEE BREAKDOWN)</li> <li>VALVE ASSY (SEE BREAKDOWN)</li> <li>HYDRAULIC HOSE (PER HOSE)</li> <li>TIGHTEN FITTINGS (PER FITTING)</li> <li>HYDRAULIC HOSE (PER HOSE)</li> <li>TIGHTEN FITTINGS (PER FITTING)</li> <li>HYDRAULIC HOSE (PER HOSE)</li> <li>TIGHTEN FITTINGS (PER FITTING)</li> <li>HYDRAULIC HOSE (PER HOSE)</li> <li>TIGHTEN FITTINGS (PER FITTING)</li> <li>HYDRAULIC HOSE (PER HOSE)</li> <li>TIGHTEN FITTINGS (PER FITTING)</li> <li>HYDRAULIC HOSE (PER HOSE)</li> <li>TIGHTEN FITTINGS (PER FITTING)</li> <li>HYDRAULIC HOSE (PER HOSE)</li> <li>TIGHTEN FITTINGS (PER FITTING)</li> <li>HYDRAULIC HOSE (PER HOSE)</li> <li>TIGHTEN FITTINGS (PER FITTING)</li> <li>HYDRAULIC HOSE (PER HOSE)</li> <li>TIGHTEN FITTINGS (PER FITTING)</li> <li>HYDRAULIC HOSE (PER HOSE)</li> <li>TIGHTEN FITTINGS (PER FITTING)</li> <li>HYDRAULIC HOSE (PER HOSE)</li> <li>TIGHTEN FITTINGS (PER FITTING)</li> <li>HYDRAULIC HOSE (PER HOSE)</li> <li>TIGHTEN FITTINGS (PER FITTING)</li> <li>HYDRAULIC HOSE (PER HOSE)</li> <li>TIGHTEN FITTINGS (PER FITTING)</li> </ul> </div>	<div data-bbox="1858 267 1984 1258" data-label="Text"> <p>7689100B</p> </div>

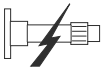
BACKHOE  
BASE MACHINE

SUBFRAME MOUNTING KIT



7689702

Item



Description

7

-	46 05 00	2.0	MOUNTING KIT R & R
1	46 05 01	0.5	SUPPORT
3	46 05 02	0.4	MOUNT
5	46 05 03	0.2	CENTER SUPPORT
7	46 01 20	0.1	PIN

7689702