

# Massey Ferguson®

1648 / 1652 / 1655  
Compact Tractor

## WORKSHOP SERVICE MANUAL 4283387M2

### CONTENTS

|                                |    |
|--------------------------------|----|
| GENERAL INFORMATION .....      | 01 |
| ENGINE .....                   | 02 |
| MAJOR COMPONENTS .....         | 03 |
| CLUTCH .....                   | 04 |
| TRANSMISSION .....             | 05 |
| HYDROSTATIC TRANSMISSION ..... | 06 |
| REAR AXLE AND BRAKES .....     | 07 |
| FRONT AXLE .....               | 08 |
| HYDRAULIC SYSTEM .....         | 09 |
| ELECTRICAL .....               | 10 |
| HYDROSTATIC STEERING .....     | 11 |
| CAB AND AIR CONDITIONING ..... | 12 |

# Massey Ferguson®

1648 / 1652 / 1655  
Compact Tractor

## SERVICE MANUAL 4283387M2

### 01 - General Information

#### Contents

|                                                                     |       |
|---------------------------------------------------------------------|-------|
| GENERAL                                                             |       |
| Introduction .....                                                  | 01-1  |
| To the Dealers .....                                                | 01-1  |
| Replacement Parts .....                                             | 01-1  |
| Units of Measurement .....                                          | 01-1  |
| Table of Contents .....                                             | 01-1  |
| Page Numbers .....                                                  | 01-1  |
| Machine Identification .....                                        | 01-2  |
| Major Components .....                                              | 01-4  |
| Platform Tractor .....                                              | 01-4  |
| Cab Tractor .....                                                   | 01-5  |
| SPECIFICATIONS AND CAPACITIES                                       |       |
| General Dimensions .....                                            | 01-9  |
| Platform Tractors .....                                             | 01-9  |
| Cab Tractors .....                                                  | 01-10 |
| Maximum Load Capacity .....                                         | 01-11 |
| Engine .....                                                        | 01-12 |
| Transmission .....                                                  | 01-13 |
| Power Take-Off (PTO) .....                                          | 01-13 |
| Hydraulic System .....                                              | 01-14 |
| Electrical System .....                                             | 01-14 |
| Capacities .....                                                    | 01-14 |
| Lubrication / Fill Points .....                                     | 01-15 |
| Periodic Inspection and Maintenance Chart .....                     | 01-16 |
| PRECAUTIONS FOR DISASSEMBLY                                         |       |
| General Precautions For Disassembly And Installation .....          | 01-19 |
| Before Operation .....                                              | 01-19 |
| Precautions To Be Followed When Installing Standardized Parts ..... | 01-19 |
| STANDARD TORQUE CHART                                               |       |
| Standard Torque Chart .....                                         | 01-23 |
| CONVERSION TABLE                                                    |       |
| Conversion Tables .....                                             | 01-25 |
| INDEX .....                                                         | 01-27 |



---

# GENERAL

## INTRODUCTION

This service manual has been prepared with the latest service information available at the time of publication. Read the service manual carefully before doing any service on the machine. This manual is one of the most important tools available to the service technician.

Right-hand and left-hand, as used in this manual, is determined by facing the direction the machine will travel when in use.

The photos, illustrations, and data used in this manual were current at the time of printing, but due to possible production changes, your machine can vary slightly. The Manufacturer reserves the right to redesign and change the machine as necessary without notification.



**WARNING:** Some pictures in this manual show the machine with shields or guards removed to allow for a better view of the subject of the picture. All shields and guards must be in position before operating the machine.

## TO THE DEALERS

This manual was developed to provide the best possible information, technical support and service to the customer. Review the Table of Contents and basic layout to become familiar with locations of pertinent information such as maintenance table, specifications and etc.

## REPLACEMENT PARTS

To receive efficient service, always remember to give the dealer the following information:

- Correct part description or part number.
- Model number of your machine.
- Serial number of your machine.

## UNITS OF MEASUREMENT

Measurements are given in metric units followed by the equivalent in US units. Hardware sizes are given in millimeters for metric hardware and inches for U.S. hardware.

## TABLE OF CONTENTS

A Table of Contents is in the front of this manual. The Table of Contents shows the divisions. The individual divisions also have a Table of Contents.

## PAGE NUMBERS

All page numbers are made of two numbers separated by a dash, such as 01-25. The number before the dash is the division number. The number following the dash is the page number in that division. Page numbers will be at the lower right or left of each page.

## General

---

### MACHINE IDENTIFICATION

Each tractor is identified by means of a tractor model and serial numbers. As a further identification, the engine and chassis are provided with identification numbers.

To ensure prompt, efficient service when ordering parts or requesting repairs from authorized dealer, record these numbers in the spaces provided.

Machine Model Number:

---

Machine Serial Number:

---

Date of Delivery:

---

Dealer Name and Address:

---

---

---

---

Dealer Telephone Number:

---

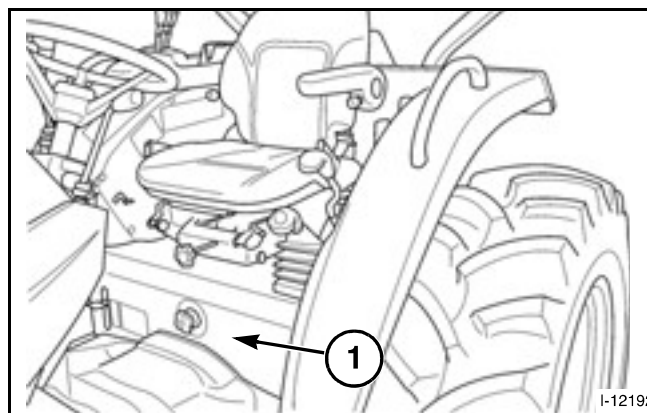
Dealer E-mail Address:

---

Dealer Fax Number:

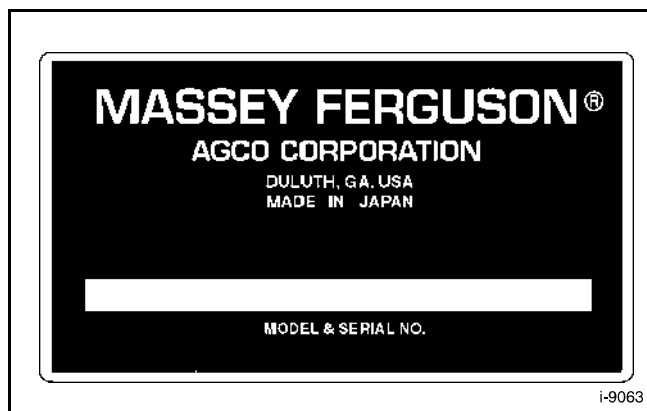
---

**FIG. 1:** The tractor identification plate (1) is located below the operator's seat.



**FIG. 1**

**FIG. 2:** The identification plate contains the model number and tractor serial number.



**FIG. 2**

**FIG. 3:** The engine model number (1) is cast on the right side of the engine block, below the injection pump.

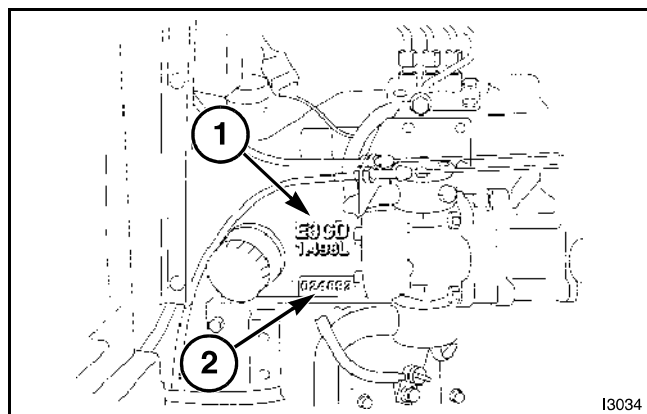
The engine serial number (2) is stamped into the cylinder block, below the engine model number.

Engine Model Number:

\_\_\_\_\_

Engine Serial Number:

\_\_\_\_\_

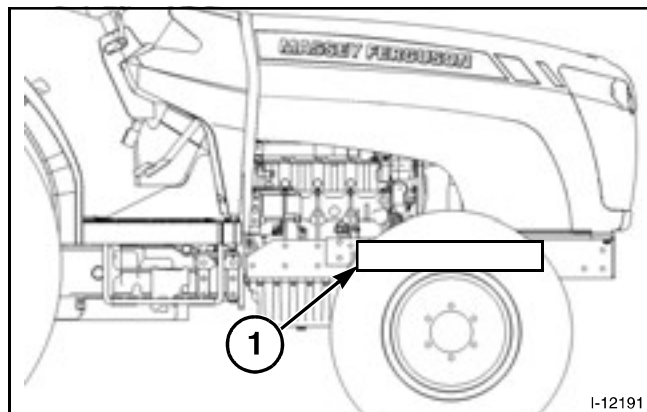


**FIG. 3**

**FIG. 4:** Chassis number (1) is stamped in the right side of front frame.

Chassis Number:

\_\_\_\_\_



**FIG. 4**

## General

### MAJOR COMPONENTS

#### Platform Tractor

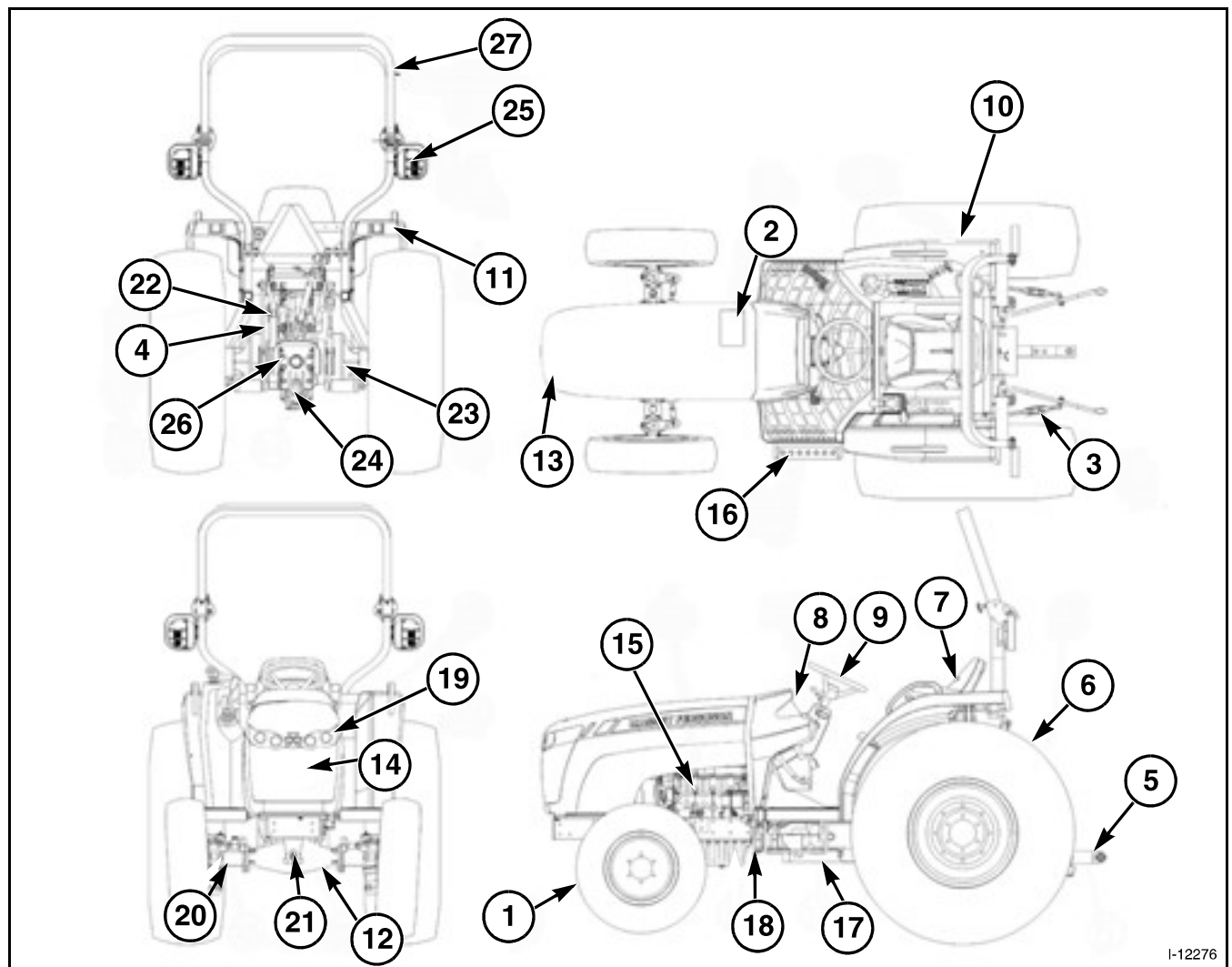


FIG. 5

**FIG. 5:** Identification and terminology of major components, as given in this manual, are as follows:

- |                           |                                            |
|---------------------------|--------------------------------------------|
| (1) Front Wheels          | (14) Battery                               |
| (2) Fuel Tank Filler      | (15) Engine                                |
| (3) Stabilizer            | (16) Foot Step                             |
| (4) Lift Rod              | (17) Transmission                          |
| (5) Lower Link            | (18) Front Wheel-Drive Shaft               |
| (6) Rear Wheels           | (19) Headlight                             |
| (7) Operator's Seat       | (20) Front Axle                            |
| (8) Instrument Panel      | (21) Front Axle Pivot                      |
| (9) Steering Wheel        | (22) Lift Arm                              |
| (10) Fender               | (23) Rear Axle                             |
| (11) Reflector/Tail Lamp  | (24) Drawbar                               |
| (12) Steering Cylinder    | (25) Turn/Warning Light                    |
| (13) Hood and Front Grill | (26) Center Housing                        |
|                           | (27) Roll-Over Protective Structure (ROPS) |

## Cab Tractor

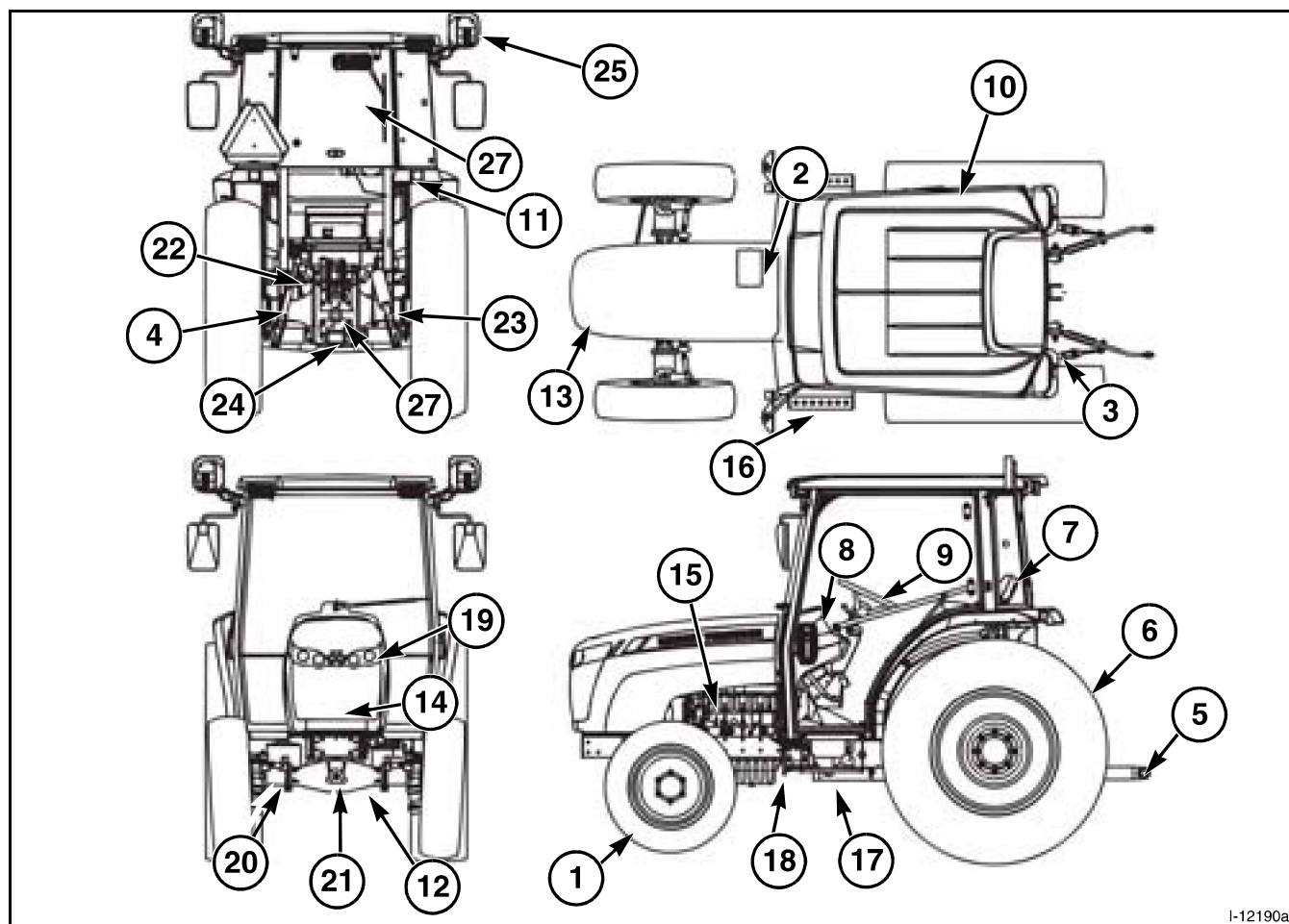


FIG. 6

**FIG. 6:** Identification and terminology of major components, as given in this manual, are as follows:

- |                           |                              |
|---------------------------|------------------------------|
| (1) Front Wheels          | (14) Battery                 |
| (2) Fuel Tank Filler      | (15) Engine                  |
| (3) Stabilizer            | (16) Foot Step               |
| (4) Lift Rod              | (17) Transmission            |
| (5) Lower Link            | (18) Front Wheel-Drive Shaft |
| (6) Rear Wheels           | (19) Headlight               |
| (7) Operator's Seat       | (20) Front Axle              |
| (8) Instrument Panel      | (21) Front Axle Pivot        |
| (9) Steering Wheel        | (22) Lift Arm                |
| (10) Fender               | (23) Rear Axle               |
| (11) Reflector/Tail Lamp  | (24) Drawbar                 |
| (12) Steering Cylinder    | (25) Turn/Warning Light      |
| (13) Hood and Front Grill | (26) Center Housing          |
|                           | (27) Cab                     |



**NOTES**



