

Page Title	Page Number
CYLINDER BLOCK (PERKINS GAS)	2
CRANKSHAFT AND BEARINGS, FLYWHEEL (PERKINS GAS)	5
PISTONS, CONNECTING RODS AND BEARINGS (PERKINS GAS)	6
CRANKSHAFT, CAMSHAFT, FLYWHEEL AND TIMING GEARS	9
CRANKSHAFT, CAMSHAFT, FLYWHEEL AND TIMING GEARS	33
CRANKSHAFT, CAMSHAFT, FLYWHEEL AND TIMING GEARS	45
CYLINDER HEAD AND COVER VALVES AND ROCKER ARMS (PERKINS GAS)	10
ENGINE GASKET SET (PERKINS GAS)	13
LUBRICATION SYSTEM (PERKINS GAS)	14
BALANCER (PERKINS GAS)	17
GOVERNOR (PERKINS GAS)	18
MANIFOLD AND MUFFLER (PERKINS GAS)	21
AIR CLEANER (PERKINS GAS)	22
RADIATOR (PERKINS GAS)	25
WATER PUMP (PERKINS GAS)	26
WATER PUMP (PERKINS GAS)	29
CYLINDER BLOCK AND GOVERNOR (CONTINENTAL GAS)	30
PISTONS AND RINGS, CONNECTING RODS AND BEARINGS	34
PISTONS AND RINGS, CONNECTING RODS AND BEARINGS	46
PISTONS AND RINGS, CONNECTING RODS AND BEARINGS	129
CYLINDER HEAD AND COVER, VALVES AND ROCKER ARMS	37
CYLINDER HEAD AND COVER, VALVES AND ROCKER ARMS	49
ENGINE GASKETS AND SEALS (CONTINENTAL GAS)	38
OIL PUMP, OIL PAN, OIL FILTER (CONTINENTAL GAS)	41
CYLINDER BLOCK AND GOVERNOR (CONTINENTAL L.P.G.)	42
ENGINE GASKETS AND SEALS (CONTINENTAL - L.P.G.)	50
OIL PUMP, OIL PAN, OIL FILTER (CONTINENTAL - L.P.G.)	53
MANIFOLD AND MUFFLER (VERTICAL EXHAUST)	54
AIR INTAKE (CONTINENTAL - GAS AND L.P.G.)	57
RADIATOR AND ATTACHING PARTS (CONTINENTAL - GAS AND L.P.G.)	58
WATER PUMP (CONTINENTAL - GAS AND L.P.G.)	61
THROTTLE AND CHOKE CONTROL (PERKINS AND CONTINENTAL - GAS)	62
THROTTLE AND CHOKE CONTROL (CONTINENTAL - L.P.G.)	65
THROTTLE AND CHOKE CONTROL (STATE OF MISSOURI)	66
FUEL TANK AND LINES (PERKINS AND CONTINENTAL - GAS)	69
CARBURETOR (PERKINS GAS)	70
CARBURETOR (CONTINENTAL - GAS)	73
CARBURETOR (CONTINENTAL GAS)	74
FUEL TANK AND LINES (CONTINENTAL L.P.G.)	77
CARBURETOR (CONTINENTAL - L.P.G.)	78
DISTRIBUTOR (PERKINS GAS)	81
DISTRIBUTOR (CONTINENTAL - GAS AND L.P.G.)	82
STARTER (PERKINS GAS)	85
STARTER (CONTINENTAL - GAS AND L.P.G.)	86
STARTER (CONTINENTAL - GAS AND L.P.G.)	89
ALTERNATOR (PERKINS GAS AND DIESEL)	90
GENERATOR (CONTINENTAL - GAS AND L.P.G.)	93
GENERATOR (CONTINENTAL, GAS AND L.P.G.)	94
CYLINDER BLOCK (SOUTH AFRICA ONLY)	97
CYLINDER HEAD (SOUTH AFRICA ONLY)	98

CRANKSHAFT (SOUTH AFRICA ONLY)	101
CYLINDER HEAD COVER (SOUTH AFRICA ONLY)	102
MANIFOLD (SOUTH AFRICA ONLY)	105
TIMING GEAR (SOUTH AFRICA ONLY)	106
OIL PAN (SOUTH AFRICA ONLY)	109
OIL FILTER (SOUTH AFRICA ONLY)	110
WATER PUMP (SOUTH AFRICA ONLY)	113
FUEL LIFT PUMP (SOUTH AFRICA ONLY)	114
FUEL INJECTION PUMP (SOUTH AFRICA ONLY)	117
GASKET SETS (SOUTH AFRICA ONLY)	118
CYLINDER BLOCK AND ATTACHING PARTS (DIESEL)	121
CRANKSHAFT, BEARINGS AND FLYWHEEL (DIESEL)	125
CRANKSHAFT, BEARINGS AND FLYWHEEL (DIESEL)	126
CYLINDER HEAD AND COVER, VALVES AND ROCKER ARMS (DIESEL)	130
TIMING GEARS, HOUSING AND COVER, CAMSHAFT (DIESEL)	133
TIMING GEARS, HOUSING AND COVER, CAMSHAFT (DIESEL)	134
ENGINE GASKET SETS (DIESEL)	137
OIL PUMP, OIL PAN, LUBRICATING LINES (DIESEL)	138
OIL FILTER (DIESEL) (USED LATE PRODUCTION)	141
OIL FILTER (DIESEL) (USED EARLY PRODUCTION)	142
MANIFOLD AND MUFFLER (DIESEL) (VERTICAL EXHAUST)	145
AIR TAKE (DIESEL)	146
RADIATOR AND ATTACHING PARTS (DIESEL) (SOUTH AFRICA ONLY)	149
RADIATOR (DIESEL) STANDARD AND ROW CROP	150
WATER PUMP (DIESEL)	153
FUEL TANK AND LINES (DIESEL)	154
THROTTLE AND FUEL SHUT-OFF (DIESEL)	157
FUEL INJECTION SYSTEM (DIESEL)	158
INJECTION PUMP (DIESEL)	161
FUEL FILTERS (DIESEL)	162
FUEL PUMP (DIESEL)	165
FUEL PUMP (DIESEL)	166
STARTER (DIESEL)	169
STARTER (A4 212 DIESEL) (SOUTH AFRICA ONLY)	170
SOLENOID ASSEMBLY	173
ALTERNATOR (DIESEL) (STANDARD AND ROW CROP)	174
GENERATOR, (DIESEL) (STANDARD AND ROW CROP)	177
GENERATOR (DIESEL) (DUAL TRICYCLE)	178
GENERATOR	181
INSTRUMENT PANEL, INSTRUMENTS AND SWITCHES (GAS)	182
INSTRUMENT PANEL, INSTRUMENTS AND SWITCHES	186
INSTRUMENT PANEL, INSTRUMENTS AND SWITCHES	193
INSTRUMENT PANEL, INSTRUMENTS AND SWITCHES (DIESEL)	189
ELECTRICAL WIRING (PERKINS GAS)	194
ELECTRICAL WIRING (CONTINENTAL GAS)	198
ELECTRICAL WIRING (CONTINENTAL- L.P.G.)	201
ELECTRICAL WIRING (DIESEL, W/GENERATOR) (DUAL TRICYCLE)	202
ELECTRICAL WIRING (DIESEL, W/ALTERNATOR)	205
ELECTRICAL WIRING (DIESEL, W/GENERATOR)	206
LIGHTING EQUIPMENT (FENDER MOUNTED)	209
LIGHTING EQUIPMENT (HOOD MOUNTED)	213
REAR WORK AND WARNING LAMP	214

FRONT SUSPENSION (SOUTH AFRICA ONLY)	217
FRONT AXLE AND TIE RODS (STANDARD AND ROW CROP)	218
FRONT AXLE AND TIE RODS (ORCHARD) (GAS AND DIESEL)	221
FRONT AXLE AND TIE RODS (ROW CROP) (L.P.G.)	222
FRONT SUSPENSION (DUAL TRICYCLE)	225
STEERING GEAR (SOUTH AFRICA ONLY)	226
STEERING GEAR (GAS, LPG AND DIESEL)	229
POWER STEERING CYLINDER (GAS, L.P.G. AND DIESEL)	230
POWER STEERING CYLINDER (GAS, L.P.G. AND DIESEL)	233
POWER STEERING LINES AND LINKAGE	234
POWER STEERING LINES AND LINKAGE	237
POWER STEERING LINES AND LINKAGE	238
POWER STEERING LINES AND LINKAGE (DUAL TRICYCLE)	241
POWER STEERING PUMP (CONTINENTAL GAS AND L.P.G.)	242
POWER STEERING PUMP	245
POWER STEERING PUMP (PERKINS GAS)	246
POWER STEERING PUMP (DIESEL)	249
GEAR SHIFT (8 SPEED)	250
GEAR SHIFT (6 SPEED) (8 SPEED AND MULTI-POWER)	253
MULTI-POWER SHIFT CONTROL	254
TRANSMISSION (8 SPEED) (STANDARD, ROW CROP AND ORCHARD)	257
TRANSMISSION	261
TRANSMISSION	262
TRANSMISSION	265
MULTI-POWER TRANSMISSION	266
MULTI-POWER TRANSMISSION	270
MULTI-POWER TRANSMISSION	274
TRANSMISSION CASE AND CLUTCH CONTROLS	278
DUAL CLUTCH (LIVE P.T.O.)	281
SPLIT TORQUE CLUTCH (INDEPENDENT P.T.O.)	282
HYDRAULIC PUMP, MULTI-POWER AND AUXILIARY	285
HYDRAULIC PUMP, MULTI-POWER AND AUXILIARY	289
HYDRAULIC PUMP, MULTI-POWER AND AUXILIARY	290
HYDRAULIC PUMP, MULTI-POWER AND AUXILIARY	293
MULTI-POWER SHIFT VALVE	286
HYDRAULIC PUMP, MULTI-POWER	294
HYDRAULIC PUMP AND DRIVE	297
HYDRAULIC PUMP AND DRIVE	298
HYDRAULIC PUMP AND DRIVE	301
HYDRAULIC PUMP AND DRIVE (6 SPEED)	302
MULTI-POWER TRANSMISSION PUMP, VALVE AND LINES	305
HYDRAULIC PUMP (SERVICE ONLY)	306
HYDRAULIC PUMP (USED LATE PRODUCTION)	309
HYDRAULIC PUMP	310
HYDRAULIC PUMP, MULTI-POWER W/AUXILIARY	313
HYDRAULIC PUMP, MULTI-POWER W/AUXILIARY	314
HYDRAULIC PUMP, MULTI-POWER W/OUT AUXILIARY	317
AUXILIARY HYDRAULIC PUMP SERVICE KIT	318
HYDRAULIC PUMP (WITHOUT AUXILIARY HYDRAULICS)	321
HYDRAULIC PUMP (WITHOUT AUXILIARY HYDRAULICS)	322
HYDRAULIC LIFT PUMP (WITH 21 SPLINED CAMSHAFT)	325

TABLE OF CONTENT

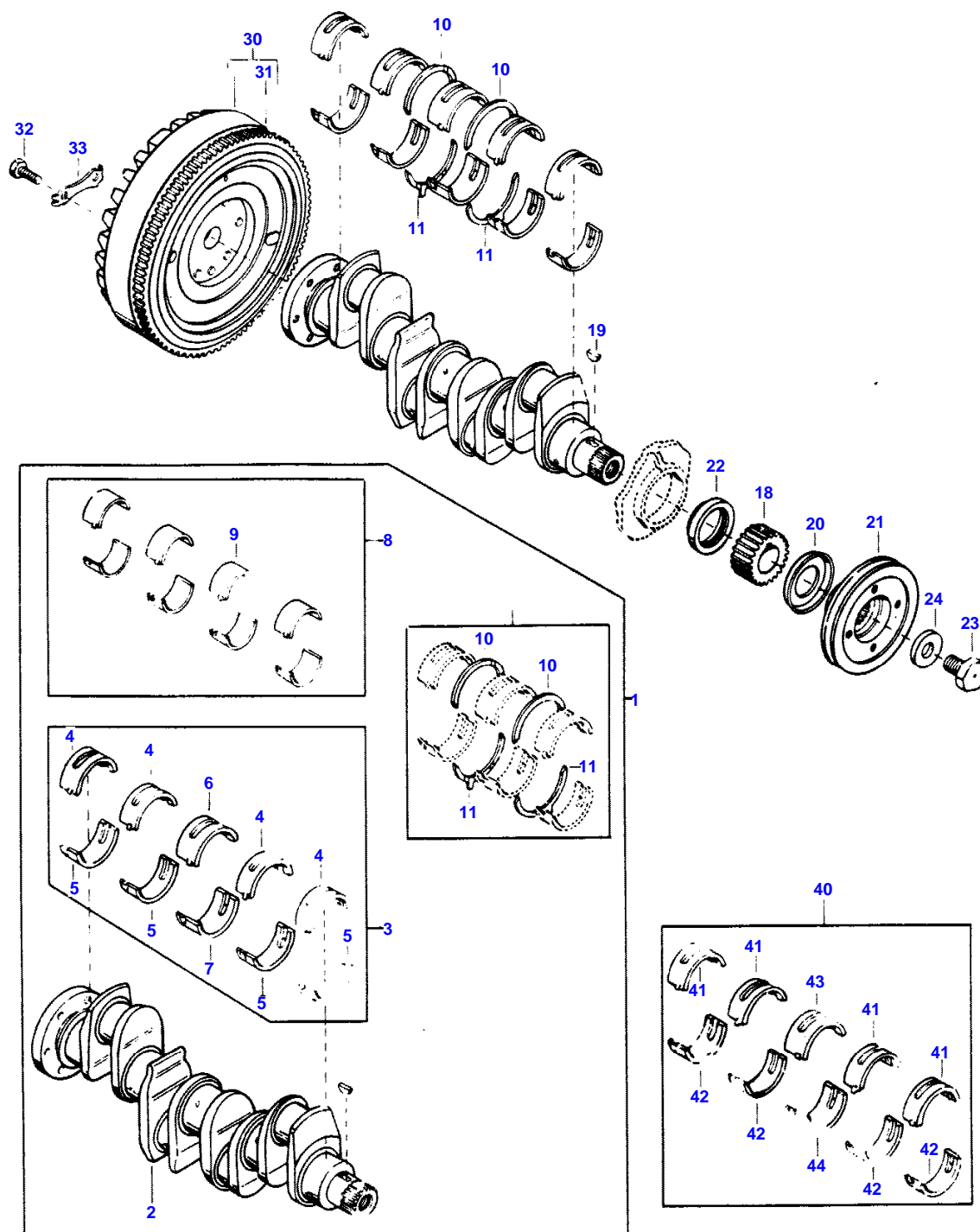
HYDRAULIC LIFT PUMP	325A
HYDRAULIC LIFT PUMP	327B
HYDRAULIC LIFT PUMP	327F
HYDRAULIC LIFT PUMP	329
HYDRAULIC LIFT PUMP	333
HYDRAULIC LIFT PUMP	334
HYDRAULIC LIFT PUMP	337
SERVICE KIT (LIFT PUMP CONTROL VALVE)	326
HYDRAULIC LIFT COVER	338
HYDRAULIC LIFT COVER	341
HYDRAULIC LIFT COVER	342
HYDRAULIC LIFT CONTROLS (WITH PRESSURE CONTROL)	345
HYDRAULIC LIFT CONTROLS (WITHOUT PRESSURE CONTROL)	346
PRESSURE CONTROL VALVE (SERVICE REPLACEMENT)	349
PRESSURE CONTROL VALVE (STANDARD)	350
HYDRAULIC LIFT SHAFT AND CYLINDER (WITH PRESSURE CONTROL)	353
HYDRAULIC LIFT SHAFT AND CYLINDER (W/O PRESSURE CONTROL)	357
HYDRAULIC LIFT SHAFT AND CYLINDER (W/O PRESSURE CONTROL)	361
OIL COOLER AND FILTER (MULTI-POWER TRANSMISSION)	362
OIL COOLER AND FILTER (8 SPEED TRANSMISSION)	365
CENTER LIFT LINKAGE	366
UPPER LIFT LINKAGE (LATE PRODUCTION)	369
UPPER LIFT LINKAGE (EARLY PRODUCTION)	370
LOWER LIFT LINKAGE	373
DIFFERENTIAL HOUSING AND P.T.O. SHAFT	374
DIFFERENTIAL HOUSING AND P.T.O. SHAFT	382
DIFFERENTIAL HOUSING (SERVICE ONLY, SEE NOTE "A")	377
DIFFERENTIAL HOUSING (USED EARLY PRODUCTION)	378
POWER TAKE OFF (USED WITH 183253M5, DIFFERENTIAL HOUSING)	381
DIFFERENTIAL (CAST IRON AXLE)	385
DIFFERENTIAL (SIDE GEARS WITH 14 TEETH, 39 SPLINES)	386
DIFFERENTIAL (SIDE GEARS WITH 14 TEETH, 39 SPLINES)	390
DIFFERENTIAL (SIDE GEARS WITH 14 TEETH, 39 SPLINES)	394
DIFFERENTIAL (SIDE GEARS WITH 16 TEETH, 39 SPLINES)	389
DIFFERENTIAL (SIDE GEARS WITH 16 TEETH, 39 SPLINES)	393
DIFFERENTIAL	397
CLUTCH AND VALVE, INDEPENDENT P.T.O.	398
CLUTCH AND VALVE, INDEPENDENT P.T.O.	401
DIFFERENTIAL LOCK (CAST IRON AXLE)	402
DIFFERENTIAL LOCK (MALLEABLE AXLE)	405
BRAKES (CAST IRON AXLE)	406
BRAKES (MALLEABLE AXLE)	409
REAR AXLE	410
REAR AXLE	413
REAR AXLE	414
REAR AXLE (WITH 2 PINION PLANETARY AND 19 SPLINE AXLE SHAFT)	417
REAR AXLE (WITH 2 PINION PLANETARY AND 39 SPLINE AXLE SHAFT)	418
HOOD AND SIDE PANELS (STANDARD - ROW CROP)	421
HOOD AND SIDE PANELS (DUAL TRICYCLE) (GAS AND DIESEL)	422
HOOD AND ATTACHING PARTS (L.P.G.)	425
HOOD CAP, GRILLE AND SIDE PANELS (W/METAL CAP)	426
HOOD CAP, GRILLE AND SIDE PANEL (W/METAL CAP)	429

HOOD CAP, GRILLE AND SIDE PANEL (W/PLASTIC CAP)	430
STEP PLATES	433
FENDERS (FLAT TOP)	434
FENDERS (FLAT TOP)	437
FENDERS (DISHED)	438
SWINGING DRAWBAR (STANDARD AND ROW CROP)	441
PRESSURE CONTROL HITCH (BOOM AND CHAIN TYPE)	442
FRONT WHEELS AND HUBS	445
REAR WHEELS (MANUAL ADJUSTABLE)	446
REAR WHEELS (POWER ADJUSTABLE) (W/CAM TYPE CLAMPS)	449
EMBLEMS AND INSTRUCTION PLATES	450
SEAT (FOAM FLOAT) (SOUTH AFRICA ONLY)	453
SEAT (USED TRACTOR SERIAL NUMBER 9A33014 TO 9A136826)	454
SEAT (METAL BUSHINGS)	457
SEAT (RUBBER BUSHINGS)	458
PAINT	461
SAF-T-FRAME AND ATTACHING PARTS (STATE OF MISSOURI)	462

CRANKSHAFT AND BEARINGS, FLYWHEEL

5

BE 1075-3



1st Print

681 194 M97 (Issue 1) 11/74

CRANKSHAFT AND BEARINGS, FLYWHEEL (PERKINS GAS)

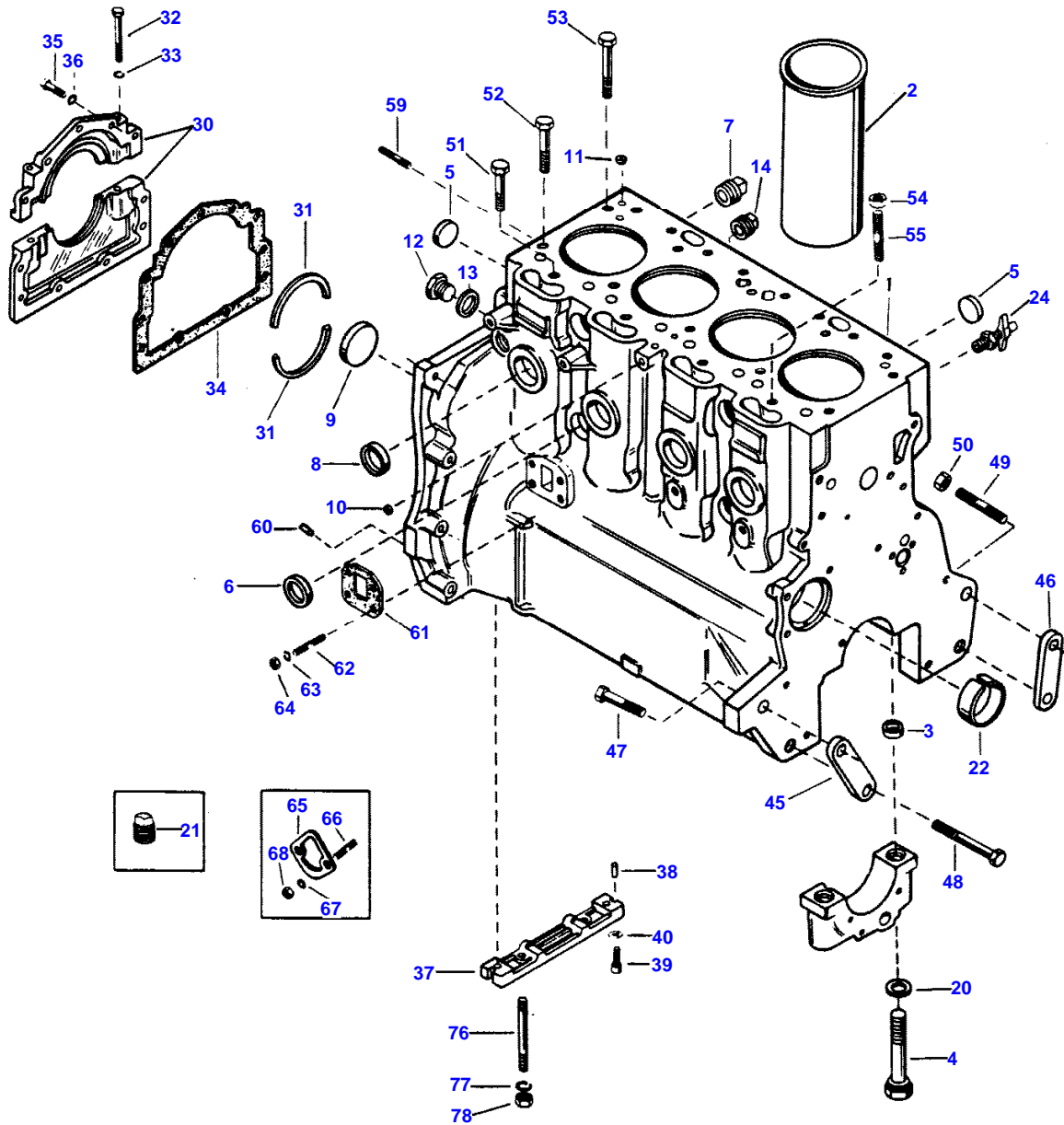
Item	Part Number	Qty	Description
1	737982M91	1	Crankshaft Kit
2		1	Crankshaft (Order 737982M91)
3	735168M91	1	Insert Set, Main Bearing (Std.)
4	735103M1	4	Insert
5	735104M1	4	Insert
6	735105M1	1	Insert
7	735106M1	1	Insert
8	736950M91	1	Insert Set, Connecting Rod Bearing (Std.)
9	733766M1	8	Insert, Connecting Rod
10	735337M1	2	Washer, Thrust, Upper (Std.)
11	735338M1	2	Washer, Thrust, Lower (Std.)
10	735742M1	AR	Washer, Thrust, Upper (+.007")
11	735743M1	AR	Washer, Thrust, Lower (+.007")
18	734749M1	1	Gear, Crankshaft (28 Teeth)
19	2196X	1	Key, Crankshaft Gear (1/4 X 7/8" Woodruff)
20	736041M1	1	Flange, Oil Slinger
21	736967M1	1	Pulley, Crankshaft
22	1446853M1	1	Seal, Oil
23	376184X1	1	Bolt (7/8 x 1-1/2" NF, Hex. Special)
24	376177X1	1	Washer, Flat, Special
30	734947M91	1	Flywheel Assemble (Live P.T.O.)
	513564M91	1	Flywheel Assembly (Independent P.T.O.) (Incl. 31)
31	731008M1	1	Gear, Ring
32	353593X1	6	Bolt (1/2 x 1-1/4" NF, Hex.)
33	731192M1	3	Tab Washer
40	735169M91	1	Insert Set, Main Bearing (-.010")
41	735448M1	4	Insert, Top (Front, Intermediate and Rear)
42	735445M1	4	Insert, Bottom (Front, Intermediate and Rear)
43	735442M1	1	Insert, Top (Center)
44	735439M1	1	Insert, Bottom (Center)
40	735170M91	1	Insert Set, Main Bearing (-.020")
41	735449M1	4	Insert, Top (Front, Intermediate and Rear)
42	735446M1	4	Insert, Bottom (Front, Intermediate And Rear)
43	735443M1	1	Insert, Top (Center)
44	735440M1	1	Insert, Bottom (Center)
40	735171M91	1	Insert Set, Main Bearing (-.030")
41	735450M1	4	Insert, Top (Front, Intermediate and Rear)
42	735447M1	4	Insert, Bottom (Front, Intermediate And Rear)
43	735444M1	1	Insert, Top (Center)
44	735441M1	1	Insert, Bottom (Center)

165 TRACTOR

2

CYLINDER BLOCK

BE1074-5



1st Print

651 194 M97 (Issue 1) 11/74

CYLINDER BLOCK (PERKINS GAS)

Item	Part Number	Qty	Description
	517378M92	1	Engine Assembly (Complete)(W/Live P.T.O)
	517377M92	1	Engine Assemble (Complete)(W/Ind. P.T.O)
	1896317M91	1	(A) Block Assemble, Short
	1896084M91	1	(B) Block Assembly, Short
1	741730M91	1	(A) Block Assembly, Stripped (Incl. Items 2 Thru 6)
	739805M91	1	(B) Block Assembly, Stripped
2	736507M2	4	Liner, Cylinder Block
	745243M1		Liner (Thickness +.010")
	3637494M1		Liner (Thickness +.030")
3	733072M1	10	Thimble
4	740647M1	10	Bolt, Bearing Cap (5/8 X 3-3/4" NF, Hex.)
5	735865M1	8	Plug (1-1/4" Cup Type)
6	376190X1	4	Plug (1-3/8" Cup Type)
7	363819X1	2	Plug (3/8" P.T. Sq. Hd.)
8	735869M1	4	Plug (1-1/2" Cup Type)
9	733705M1	1	Plug, Camshaft Hole (2" Cup Type)
10	736867M1	1	Plug (1/4" Cup Type)
11	736868M1	1	Plug (5/16" Cup Type)
12	376180X1	1	Plug (7/8" NF, Sckt. Hd.)
13	376196X1	1	Washer, Plug (29/32 X 1-1/8 X 3/32" Copper)
14	365333X1	2	Plug (1/4" - 18 X 13/32" Hex. Sckt. Hd.)
20	731141M1	10	Shim, Bearing Cap Bolt
21	368819X1	3	Plug (3/4" MPTF Sq. Hd.)
22	734883M1	1	Bushing, Camshaft
24	1851764M1	1	Cock, Cylinder Block Drain
30	734975M92	1	Housing Assembly, Rear Oil Seal
31	735942M1	2	Seal, Oil, Crankshaft, Rear
32	353531X1	11	Bolt (5/16 X 2-1/2" NF, Hex.)
33	353446X1	2	Washer (5/16" Lock)
34	735110M1	1	Gasket, Housing
35	353519X1	11	Bolt, Housing (5/16 X 1" NF, Hex.)
36	353446X1	11	Washer (5/16" Lock)
37	734841M1	1	Bridge, Block to Pan
38	733721M1	2	Gasket, Bridge Sides
39	376572X1	2	Screw, Bridge (1/4 X 3/4" Special)
40	735898M1	2	Washer, Bridge Screw
45	507760M2	1	Spacer, Front Support (Right)
46	507761M1	1	Spacer, Front Support (Left)
47	354289X1	1	Bolt (5/8 X 3" NC, Hex.) (Right Side)
48	354689X1	2	Bolt (5/8 x 5-1/4" NC, Hex.)
49	833749M1	1	Stud (5/8" x 3-5/8" NC-NF)
50	353427X1	1	Nut (5/8" NF, Hex.)
51	739504M1	6	(C) Screw, Head to Block
52	739505M1	12	(C) (1/2 x 4-1/8" NF, Hex.)
53	739506M1	2	(C) Bolt (1/2 x 4-15/16" NF, Hex.)
54	376672X1	AR	Nut (1/2" NF, Special)
55	735245M1	2	(C) (1/2" NF x 4-1/8")
	735245M1	2	(D) Stud (1/2" NF x 4-1/8")
	735244M1	12	(D) Stud (1/2" NF X 5-1/2")
	735346M1	2	(D) Stud, Head to Block (1/2" NF X 5-9/16")
59	353963X1	2	Stud (7/16" NC, x 1-5/8")
60	191314M1	2	Dowel (3/8 x 25/32")
61	740861M1	1	(A) Gasket, Lift Pump (4 Hole)
62	731311M1	4	(A) Stud (5/16" NF X 1-1/16")
63	353446X1	4	(A) Washer (5/16" Lock)
64	353916X1	4	(A) Nut (5/16" NF, Hex.)
65	737080M1	1	(B) Gasket, Fuel Pump (2 Hole)
66	731311M1	2	(B) Stud (5/16" NF x 1-1/16")
67	353446X1	2	(B) Washer (5/16" Lock)
68	353916X1	2	(B) Nut (5/16" NF, Hex.)
76	734882M1	2	Stud (5/16" NF x 3-15/16")
77	353446X1	2	Washer (5/16" Lock)
78	353916X1	2	Nut (5/16" NF, Hex.)
	773323M92	1	Block Heater (Not Shown)

(A) - Used Engine Serial Number 212 UA

CYLINDER BLOCK (PERKINS GAS)

Item	Part Number	Qty	Description
			4223A And Up.
			(B) - Used Prior To Engine Serial Number
			212 UA 4223A.
			(C) - Used Engine Serial Number 212 UA
			2378A And Up.
			(D) - Used Prior To Engine Serial Number
			212 UA 2378A.