

2705E / 2706E TRACTORS

REPAIR TIME SCHEDULE

Contents

Accessories
Brake System
Chassis
Decals
Drive Train System
Electrical System
Engine, Fuel, and Exhaust
Hydraulic System
Implement Lift System
Loader R & R
Steering System

2705E / 2706E TRACTORS RTS

A. TIME ALLOWANCE

The times listed in this publication are the result of careful study of the operation concerned; they represent the average time ONE trained dealer mechanic, of normal ability has taken to carry out the operation in a typical dealership, using standard workshop tooling and equipment including air tools, located for reasonable access and working conditions. They DO NOT include any traveling to or from the farm or site.

The machine is assumed to be clean and to be bare of any extra equipment or attachment of non "AGCO" manufacture, and delivered to an authorized and duly equipped workshop where trained personnel and spare parts required to perform the operations are immediately available.

The times given include difficulties encountered working on used as opposed to new machines, and are based on methods and recommended tools shown in the workshop manual.

The times are based on a second hand machine in reasonable condition properly maintained using approved parts. Extra time may be required to deal with seized, rusted or damaged parts.

Allowances are included in the operation times quoted for obtaining all tools and parts, cleaning and testing after repair. Diagnostic time is included in the time allowance unless a separate code is listed for diagnostic time.

The times given in this Repair Time Schedule are for a complete job from start to finish, including allowances for intermediate operations.

B. TIMES

All the operating times are presented in hours and the decimal parts of an hour. Decimal times must be used on all warranty claims.

The times given in this repair time schedule are for a complete job from start to finish. Where access has been gained for an adjacent repair only the additional time for the second repair will be accepted and not the total time for the two failures.

All times contained in this schedule are based on the latest information available at the time of this publication. The right is reserved to publish revision at any time. All operation times are subject to amendment if the design, method or technique changes result in alteration of time taken.

ACCESSORIES

BUMPER HITCH	99
DRAFT CONTROL	100
ENGINE ACCESSORY	101

BRAKE SYSTEM

BRAKE PEDAL EXCEPT HYDROSTAT TRACTORS	67
BRAKE PEDAL HYDROSTATIC TRACTORS	68
BRAKES LEFT OR RIGHT SIDE	66
PARKING BRAKE	69

CHASSIS

FENDER	83
FRONT FLOOR	85
GRILLE	81
HOOD	80
R.O.P.S.	88
REAR FLOOR	86
REAR FRAME	87
SEAT	84
SIDE NET	82

DECALS

CAUTION LABEL	91
CHASSIS DECALS	89
CONTROL LABEL	90

DRIVE TRAIN SYSTEM

4WD LEVER	58
4WD SHIFT ARM	53
AXLE HOUSING	62
CLUTCH PEDAL ASSEMBLY	34
CRUISE CONTROL	65
DAMPER	33
DIFFERENTIAL CASE	61
DRIVE PINION	60
GEAR - 4WD EXCEPT HYDROSTATIC TRANSMISSIONS	46
GEAR - 4WD HYDROSTATIC TRANSMISSIONS	47
GEAR PUMP	39
MAIN CLUTCH	32
MAIN GEAR EXCEPT HYDROSTATIC TRANSMISSIONS	42
MAIN GEAR HYDROSTATIC TRANSMISSIONS	43
MAIN LEVER	56
MAIN SHIFT FORK	51
PEDAL	63
PTO GEAR EXCEPT HYDROSTATIC TRANSMISSIONS	40
PTO GEAR HYDROSTATIC TRANSMISSIONS	41
PTO LEVER	59
PTO SHAFT	48
PTO SHIFT FORK	54
REVERSE GEAR EXCEPT HYDROSTATIC TRANSMISSIONS	37
REVERSE LEVER	55
REVERSE SHIFT FORK	50
SUB GEAR EXCEPT HYDROSTATIC TRANSMISSIONS	44
SUB GEAR HYDROSTATIC TRANSMISSIONS	45
SUB LEVER	57
SUB SHIFT FORK	52
TRANSMISSION CASE	49
TRANSMISSION CASE EXCEPT HYDROSTATIC TRANSMISSIONS	35
TRANSMISSION CASE HYDROSTATIC TRANSMISSION	36
TRANSMISSION HYDROSTATIC TRANSMISSIONS	38

ELECTRICAL SYSTEM

FRONT ELECTRICAL	75
INSTRUMENT PANEL	79

ELECTRICAL SYSTEM (CONTINUED)

MAIN ELECTRICAL	76
REAR ELECTRICAL	78

ENGINE, FUEL AND EXHAUST SYSTEM

ACCELERATOR	12
AIR CLEANER ASSEMBLY	8
CRANKSHAFT/ROD AND PISTON ASSEMBLY	14
CYLINDER BLOCK	13
CYLINDER HEAD	16
CYLINDER HEAD COVER	17
DOC SYSTEM	23
EGR SYSTEM	22
EXHAUST MANIFOLD	18
FLYWHEEL	15
FUEL PIPE	11
FUEL TANK	10
INJECTION PUMP SYSTEM	21
INTERCOOLER	9
MUFFLER	7
RADIATOR	5
TIMING GEAR CASE	20
WATER PUMP AND THERMOSTAT	19

HYDRAULIC SYSTEM

CONTROL VALVE AND FITTINGS	74
HYDRAULIC PUMP AND PLUMBING	70
SUB HYDRAULICS	72

IMPLEMENT LIFT SYSTEM



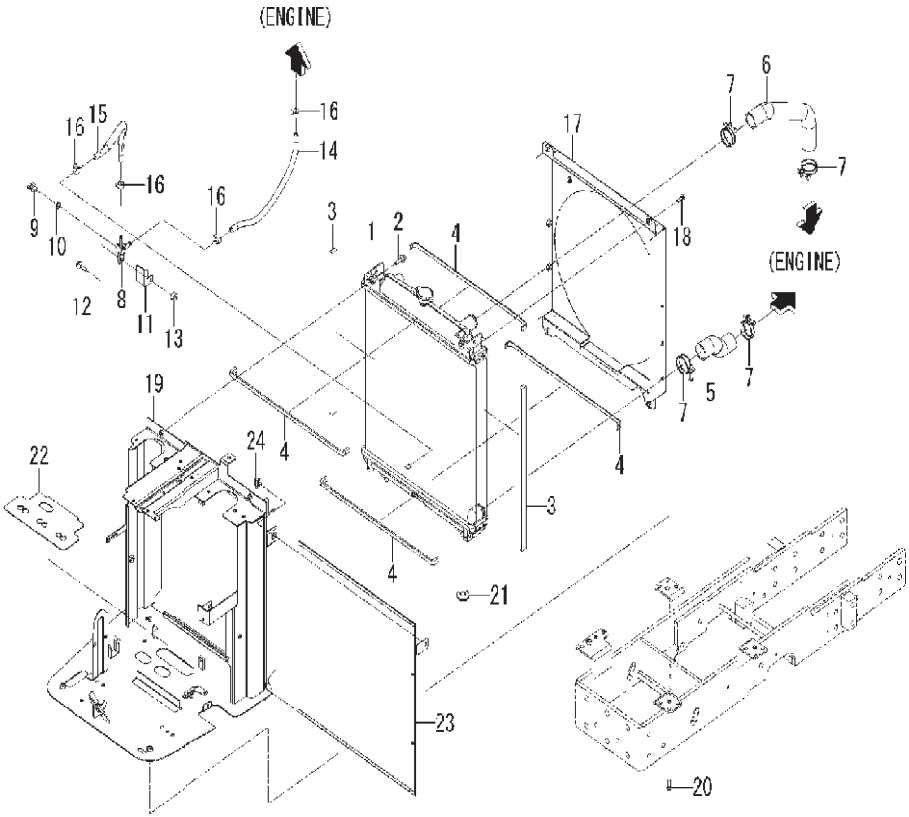
CYLINDER CASE	92
FIXED DRAWBAR	98
LIFT ROD	96
POSITION MECHANICAL LINK	93
THREE POINT LINKAGE	95
TOP LINK AND BRACKET	97

LOADER R & R

LOADER MOUNTING KIT	102
---------------------------	-----

STEERING SYSTEM

CASE	28
CONTROL	25
DRIVE SHAFT	27
FRONT AXLE BRACKET	26
FRONT AXLE HOUSING AND SHAFT	29
GEAR CASE LEFT OR RIGHT SIDE	30
STEERING WHEEL	24
TIE ROD	31

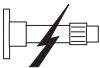
<div>2705E / 2706E TRACTORS</div> <div>ENGINE, FUEL AND EXHAUST SYSTEM</div>	Item			<div>Description</div> <div>5</div>
<div>RADIATOR</div> <div>MFC14252-1</div> 	<div>1</div> <div>5</div> <div>6</div> <div>14</div> <div>15</div> <div>17</div> <div>19</div> <div>23</div>	<div>59 02 00</div> <div>59 04 02</div> <div>59 04 00</div> <div>79 01 07</div> <div>79 01 07</div> <div>59 06 04</div> <div>59 02 61</div> <div>59 02 49</div>	<div>2.0</div> <div>0.5</div> <div>0.5</div> <div>0.5</div> <div>0.5</div> <div>1.5</div> <div>2.0</div> <div>0.2</div>	<div>RADIATOR</div> <div>RADIATOR HOSE</div> <div>RADIATOR HOSE</div> <div>HYDRAULIC HOSE</div> <div>HYDRAULIC HOSE</div> <div>SHROUD</div> <div>RADIATOR BRACKET</div> <div>SCREEN</div> <div>MFC14252-1</div>

2705E / 2706E TRACTORS
ENGINE, FUEL AND EXHAUST SYSTEM

RADIATOR

MFC14253-1

Item

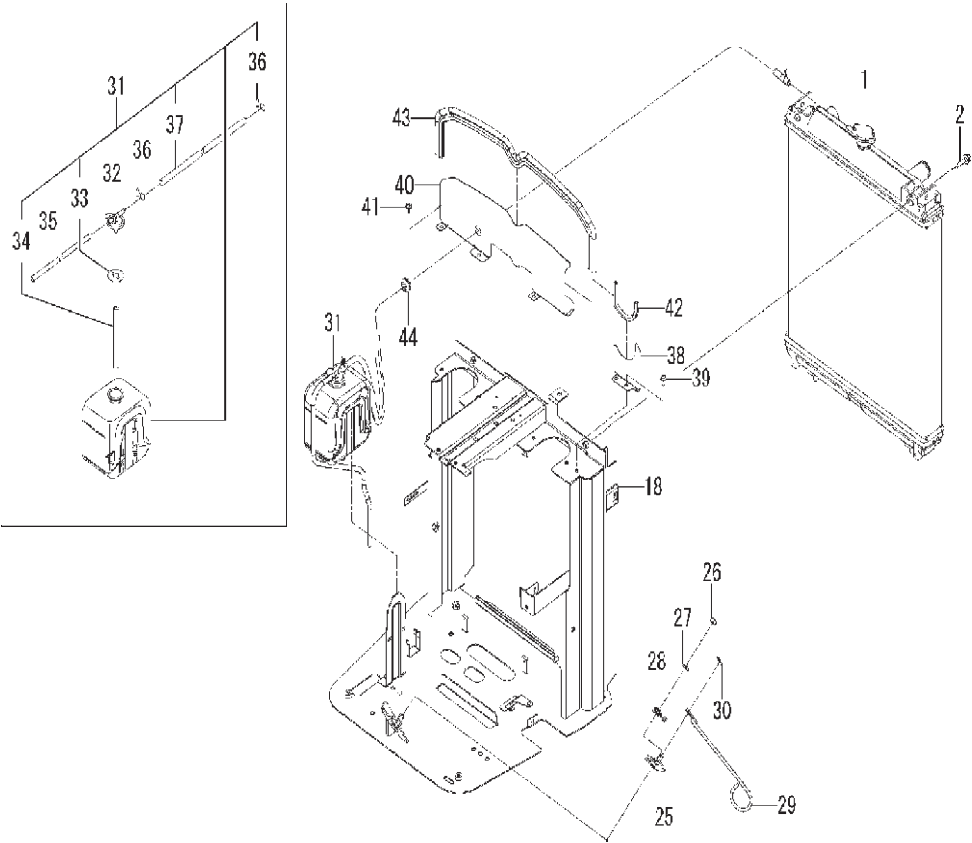




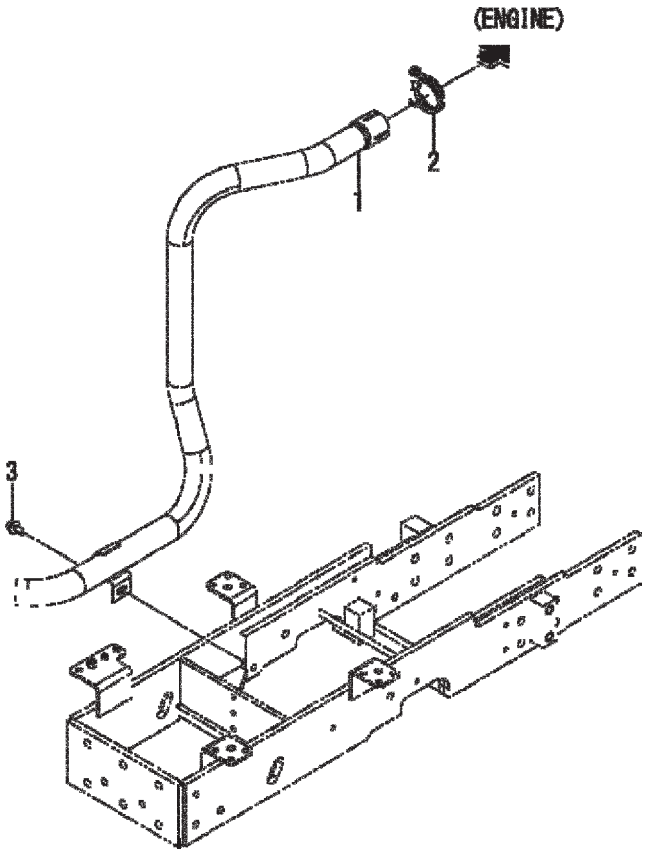
Description

6

31	59 02 10	0.5	RESERVOIR
34	59 02 14	0.5	HOSE
35	59 02 14	0.5	HOSE

MFC14253-1

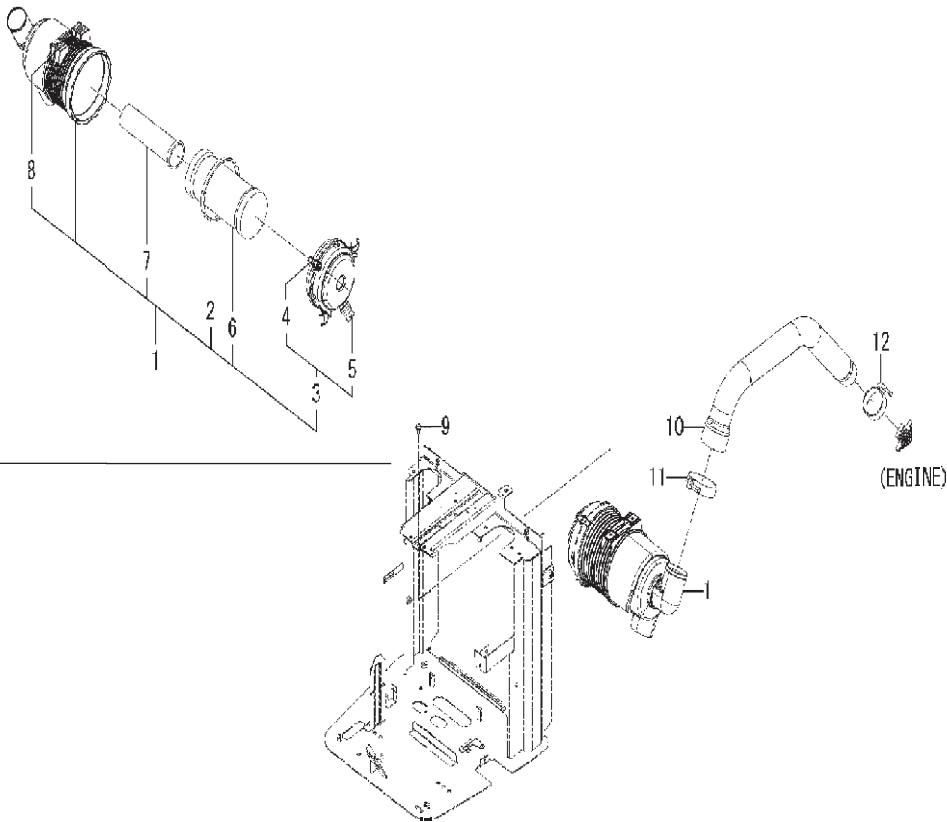


2705E / 2706E TRACTORS ENGINE, FUEL AND EXHAUST SYSTEM	Item			Description 7
<p>MUFFLER</p> <p>MFC14254-1</p> 	1	58 56 01	0.5	<p>TAIL PIPE</p> <p>MFC14254-1</p>

2705E / 2706E TRACTORS
ENGINE, FUEL AND EXHAUST SYSTEM

AIR CLEANER ASSEMBLY

MFC14255-1



Item



Description

8

1	58 15 00	0.5	AIR CLEANER ELEMENT
6	58 15 06	0.2	AIR FILTER
7	58 15 15	0.2	FILTER
10	58 15 24	0.5	HOSE

MFC14255-1