



EN

# Bobcat®

## Operation & Maintenance Manual



### Telescopic Handler

(TL34.65C) B41N11001 – 17000 & B41N17001 & Above (VIN BCFB41NNXJ0D17001 & Above)  
(TL34.65XC) B41P11001 – 17000 & B41P17001 & Above (VIN BCFB41PNXJ0D17001 & Above)  
(TL35.70) B3ZS11001 – 17000 & B3ZS17001 & Above (VIN BCFB3ZSKXJ0D17001 & Above)  
(TL35.70X) B3ZT11001 – 17000 & B3ZT17001 & Above (VIN BCFB3ZTKXJ0D17001 & Above)  
(TL38.70) B3ZU11001 – 17000 & B3ZU17001 & Above (VIN BCFB3ZUNXJ0D17001 & Above)  
(TL38.70X) B3ZV11001 – 17000 & B3ZV17001 & Above (VIN BCFB3ZVNXXJ0D17001 & Above)



## CONTENTS

FOREWORD.....	5
SAFETY AND TRAINING RESOURCES .....	31
LOAD CHARTS.....	43
OPERATING INSTRUCTIONS .....	49
PREVENTIVE MAINTENANCE .....	167
SYSTEM SETUP AND ANALYSIS .....	223
SPECIFICATIONS .....	251
WARRANTY .....	285
ALPHABETICAL INDEX.....	289

### REFERENCE INFORMATION

Write the correct information for YOUR Bobcat telescopic handler in the spaces below. Always use these numbers when referring to your Bobcat telescopic handler.

Telescopic Handler Serial Number

Engine Serial Number

---

---

NOTES:

---

---

---

---

YOUR BOBCAT DEALER:

ADDRESS:

PHONE:

---



Bobcat Company  
P.O. Box 128  
Gwinner, ND 58040-0128  
UNITED STATES OF AMERICA

Doosan Bobcat EMEA s.r.o.  
U Kodetky 1810  
26312 Dobris  
Czech Republic

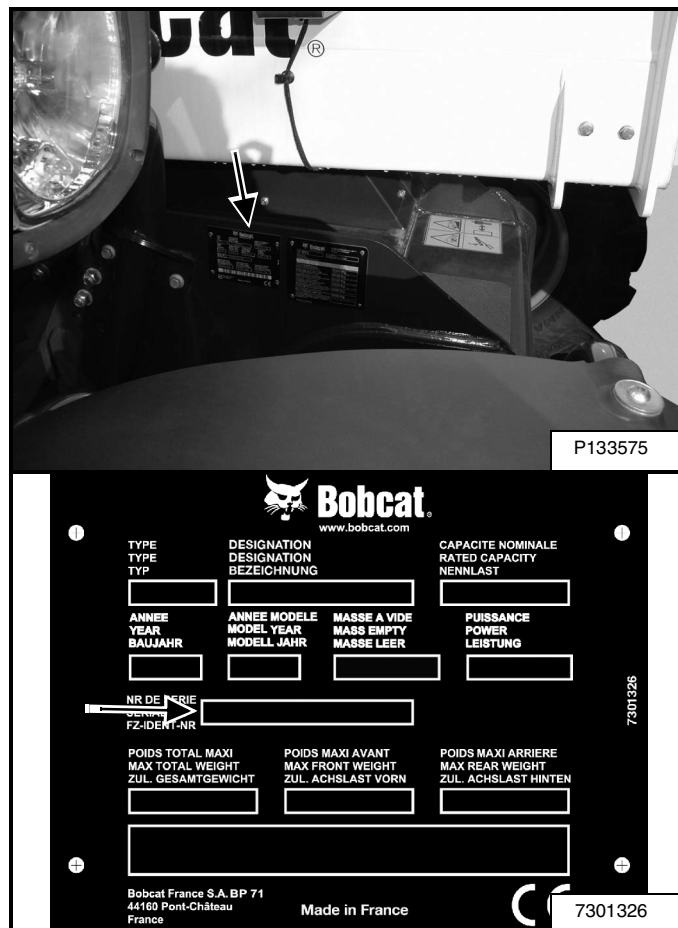
## SERIAL NUMBER LOCATION

Always use the serial number of the telescopic handler when requesting service information or when ordering parts.

If any serial number plate is damaged, contact your Bobcat dealer.

### Telescopic Handler Serial Number

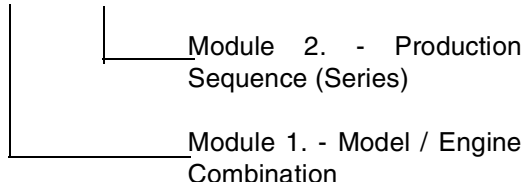
Figure 1



The telescopic handler serial number plate is located on the right side of the chassis in front [Figure 1].

Explanation of telescopic handler serial number:

XXXX XXXXXX

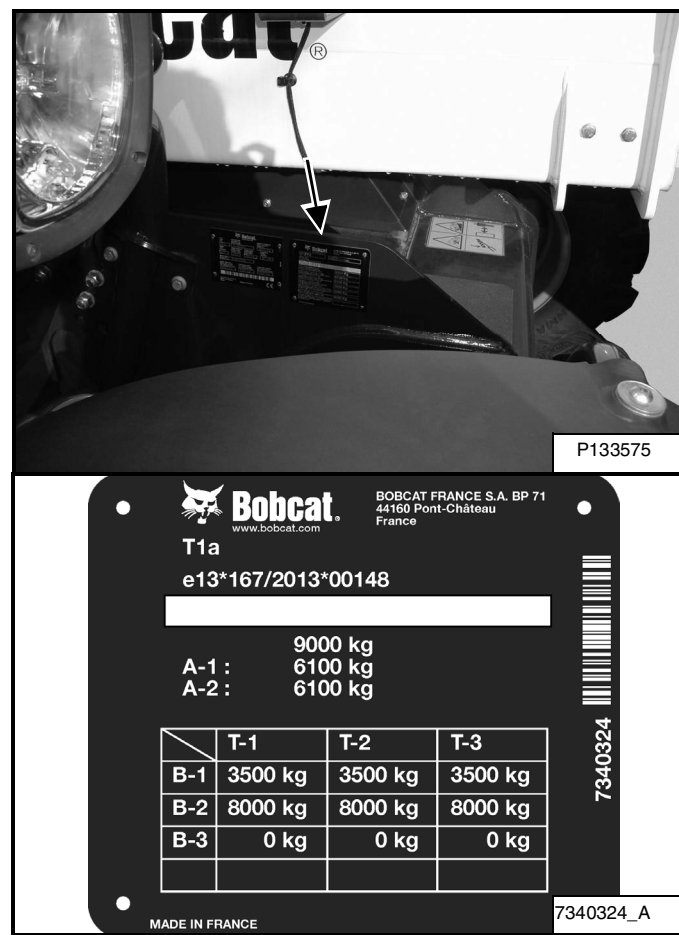


1. The four digit Model / Engine Combination number identifies the model number and engine combination.

2. The five digit Production Sequence Number identifies the order which the telescopic handler is produced.

## Telescopic Handler Statutory Plate

Figure 2

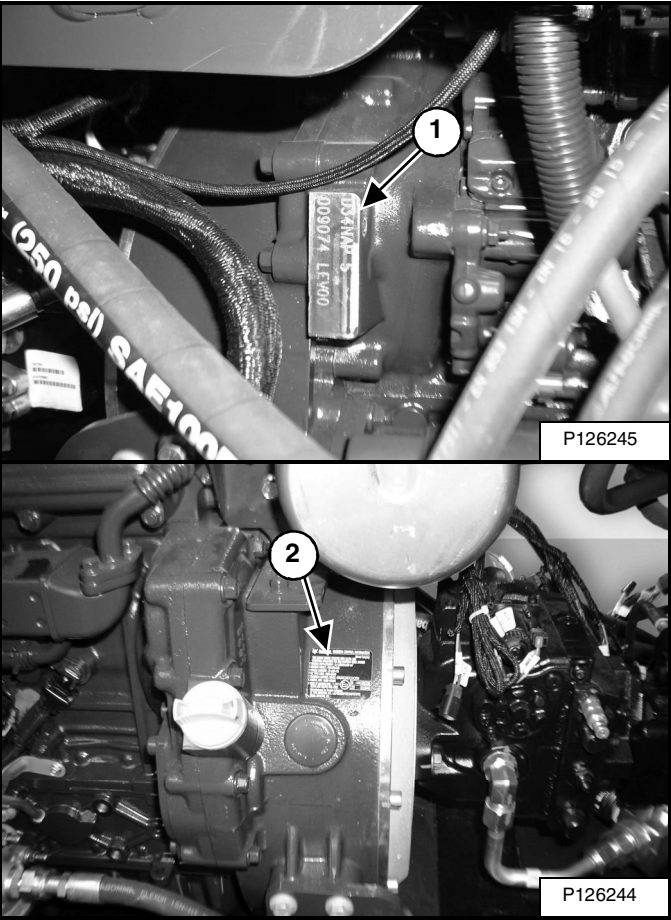


The telescopic handler statutory plate (if equipped) is located on the right side of the chassis in front [Figure 2].

SERIAL NUMBER LOCATION (CONT'D)

Engine Serial Number

Figure 3



The engine serial number can be found on the engine cylinder block (Item 1) and on the engine rating plate (Item 2) [Figure 3] near the flywheel in front of you when opening the engine cover. Always use the full number (type + number) when ordering replacement parts.

Other Serial Numbers

Other components can also have serial numbers and an identification plate. Always use these serial numbers when ordering parts.

DELIVERY REPORT

Figure 4

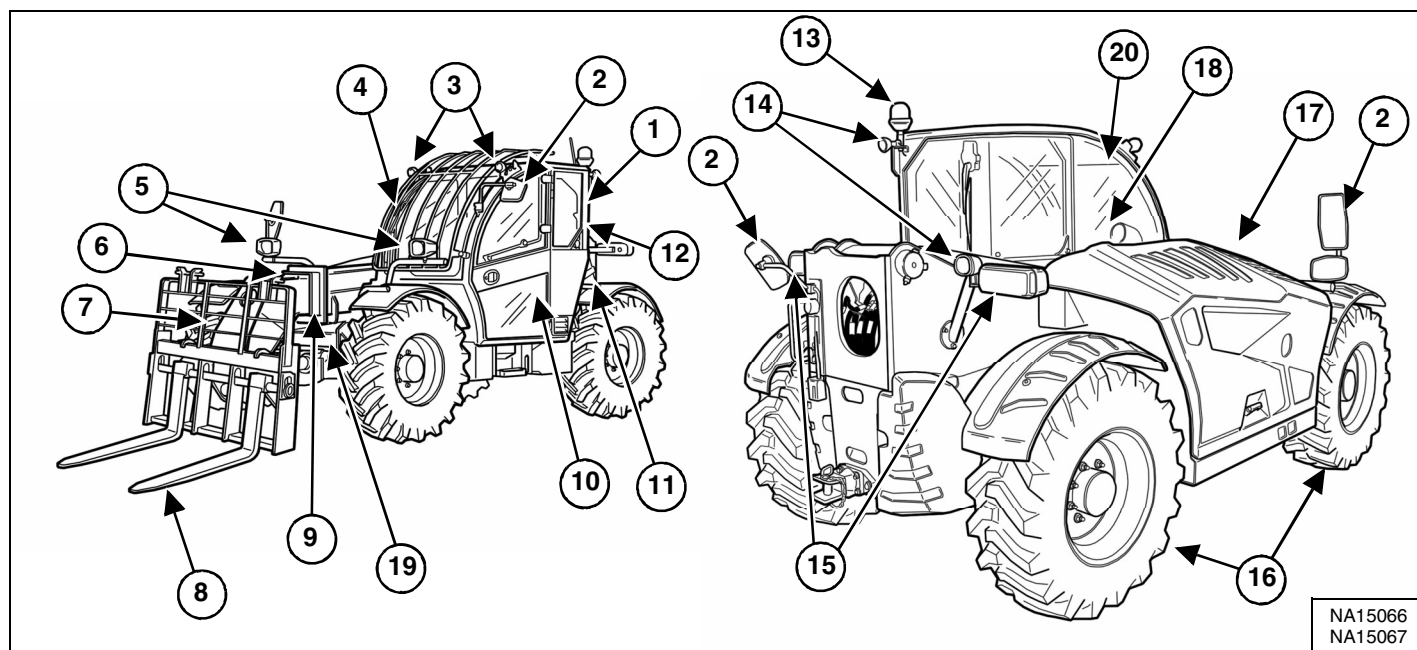
Figure 4 is a diagram of a delivery report form. The form is titled 'DELIVERY REPORT' and contains sections for 'WARNING' and a list of items to be explained or shown to the owner or operator by the dealer. The form is labeled with 'B-16315'.

The delivery report [Figure 4] contains a list of items that must be explained or shown to the owner or operator by the dealer when the Bobcat telescopic handler is delivered.

The delivery report must be reviewed and signed by the owner or operator and the dealer.

Dealer Copy -- Not for Resale

## BOBCAT TELESCOPIC HANDLER IDENTIFICATION



ITEM	DESCRIPTION	ITEM	DESCRIPTION
1	Operation & Maintenance Manual and Operator's Handbook	11	Boom Stop
2	Mirrors	12	Operator Cab (ROPS and FOPS) [C]
3	Work Lights	13	Rotating Beacon
4	Front Window Guard [A]	14	Rear Work Light
5	Front Lights [E]	15	Tail Lights and Direction Signals
6	Telescoping Boom	16	Tyres [D]
7	Boom Head	17	Engine Cover
8	Pallet Fork Attachment [B]	18	Load Capacity Charts
9	Boom	19	Carrier Locking Bar Holder
10	Seat Belt	20	Sight Level Gauge

[A] Optional or Field Accessory. (Not Standard Equipment).

[B] Attachments - Several different attachments are available for the Bobcat telescopic handler.

[C] ROPS, FOPS - Roll Over Protective Structure, per ISO 3471, and Falling Object Protective Structure per ISO 3449, Level II.

[D] TYRES - Standard tyres are shown. Several different tyre styles and sizes are available for the Bobcat telescopic handler.

[E] FRONT LIGHTS - Front lights are available in left or right hand drive version. The correct lights must be installed depending on the country regulations in which the machine is used.

## FEATURES, ACCESSORIES AND ATTACHMENTS

### Standard Items

Model TL35.70, TL38.70, TL35.70X, TL38.70X, TL34.65C and TL34.65XC Bobcat telescopic handlers are equipped with the following standard items:

- 12 V power outlet
- 4 equal-size drive wheels with CAMSO 405/70-20 16PR TM R4 tyres
- Adjustable steering column
- Back-up alarm
- Boom stop
- Cab heater
- Carrier locking bar holder
- Cushion lift (up and down)
- Cushion retract
- Diesel Oxidation Catalyst (DOC)
- Double mirrors on right side
- Eco mode
- Forward / Neutral / Reverse button on joystick
- Front and rear washer / wipers
- Gear pump, 100 L/min (26.4 gpm) (TL35.70(X))
- Glass door
- Hydrostatic transmission, 30 km/h (18.6 mph) (TL34.65C, TL35.70 and TL38.70)
- Hydrostatic transmission, 40 km/h (24.9 mph) (TL34.65XC, TL35.70X, TL38.70X)
- Interior mirror
- Longitudinal load moment controller (LLMC) system with switch to override this function
- LS piston pump, 190 L/min (50.2 gpm) (TL34.65(X)C and TL38.70(X))
- Manual locking of attachments
- Mudguards
- Quick-Tach attachment carrier
- Rear document storage net
- Road lights
- Roof window wiper
- Rotating beacon
- Seat sensor
- Selective Catalytic Reduction (SCR) system
- Semi-automatic realignment of the wheels
- Sight level gauge
- Smart handling system (SHS)
- Speed indicator
- Speed management
- Standard steering wheel
- Suspension seat
- Turbo-charged engine, 97 kW (130 hp) (TL34.65(X)C and TL38.70(X))
- Turbo-charged engine, 74,5 kW (100 hp) (TL35.70(X))
- Turn signals
- Work lights on roof (2 front + 1 rear)
- Work light on frame
- Wrench for transmission disengagement

***Specifications subject to change without notice***

## Options And Accessories

Below is a list of some equipment available from your Bobcat dealer as Dealer and / or Factory Installed Accessories and Factory Installed Options. See your Bobcat dealer for other available options, accessories and attachments.

- Adjustable hitch for trailer
- Air suspension seat
- Arm rest
- Attachment control device
- Attachment control device, without connectors
- Automatic boom suspension
- Back-up alarm lynx
- Basic tow hitch
- Blue work lights
- Boom float
- Cab air conditioning
- Cyclonic cleaner on air intake
- Deluxe cab
- Deluxe cab, with HVAC
- Deluxe steering wheel
- Dual FNR
- Extinguisher
- Fan inverter
- Front window guard
- Hydraulic hook for trailer
- Hydraulic locking of attachments, J-Tach (not for TL34.65(X)C)
- Hydraulic locking of attachments, Mani-Tach
- Hydraulic locking of attachments, Quick-Tach
- J-Tach attachment carrier (not for TL34.65(X)C)
- Keyless start
- Keypad panel
- Lockable fuel cap
- Mani-Tach attachment carrier
- Outside toolbox
- Protective zinc coating
- PVC seat suspension
- Radio predisposition (with speakers and antenna)
- Rear flat mirror
- Rear hitch electrical plug (7-Pin)
- Rear hydraulic lines
- Road lights, left hand drive
- Road lights, left hand drive LED
- Road lights, right hand drive LED
- Roll sun visor
- Rotating Beacon LED
- Solid rear document compartment
- Special colour cab
- Special colour frame, boom and rims
- Steel door
- Support for registration plate
- Tow devices for trailers
- Tractor homologation
- Trailer brake valve (hydraulic), dual lines
- Travel direction lever
- Wheel wedge
- Work lights on boom
- Work lights on boom LED
- Work light on frame LED
- Work lights on roof LED (2 front + 1 rear)

## FEATURES, ACCESSORIES AND ATTACHMENTS (CONT'D)

### Tractor Homologated Telescopic Handler

Below is a list of equipment and components specific to the Tractor Homologated Telescopic Handler which are in compliance to the 167/2013 directive.

- Right view mirror protection
- Safety hammer
- Second emergency exit
- Service wrench
- Statutory plate

**Specifications subject to change without notice**

### Available Tyres

Standard tyres:

- CAMSO 405/70-20 16PR TM R4

Optional tyres:

- DUNLOP 405/70R20 168A2/152J MPT SPT9
- DUNLOP 405/70R24 168A2/152J MPT SPT9
- CAMSO 400/80-24 20PR TM R4
- MICHELIN 400/80-24 162A8 IND TL POWER CL
- MICHELIN 460/70-24 159A8/159B IND TL XMCL
- MICHELIN 500/70-24 164A8/164B IND TL XMCL
- ALLIANCE 460/70R24 159A8 A 580
- NOKIAN 460/65R24 156A8/151D TRI STEEL TL
- CAMSO 13.00-24 TLH 792S
- MICHELIN 460/70R24 159A8/159B IND TL BIBLOAD

**NOTE: The solid tyres option is not authorised if it was not ordered initially from the factory.**

### Available Rims

Standard rims:

- RIM 13\*20" + 12.5

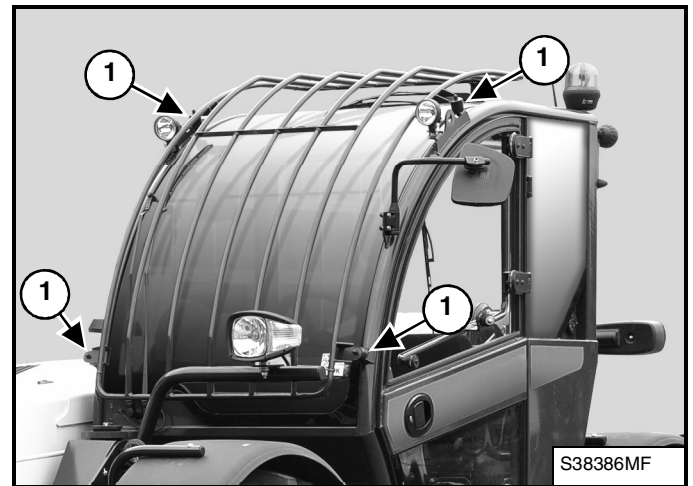
Optional rims:

- RIM 13\*24" + 12.5
- RIM 15\*24" + 12.5

See your Bobcat dealer for more information on optional tyres and the corresponding steering angle adjustment.

### Front Window Guard

Figure 5



Available for special applications to restrict material from entering cab openings [Figure 5].

The front window guard is mounted to the cab at four mounting points (Item 1) [Figure 5].

Do not use unapproved front window guard. A front window guard not manufactured by Bobcat cannot be approved.

See your Bobcat dealer for availability.

### Front Window Guard Inspection And Maintenance

The front window guard must be regularly inspected and maintained. Inspect the screen and the four mounting points (Item 1) [Figure 5] for damage. Replace parts as necessary.

## FEATURES, ACCESSORIES AND ATTACHMENTS (CONT'D)

### Attachments

These attachments are approved for use on the Bobcat telescopic handler.

Do not use unapproved attachments. Attachments not manufactured by Bobcat cannot be approved.

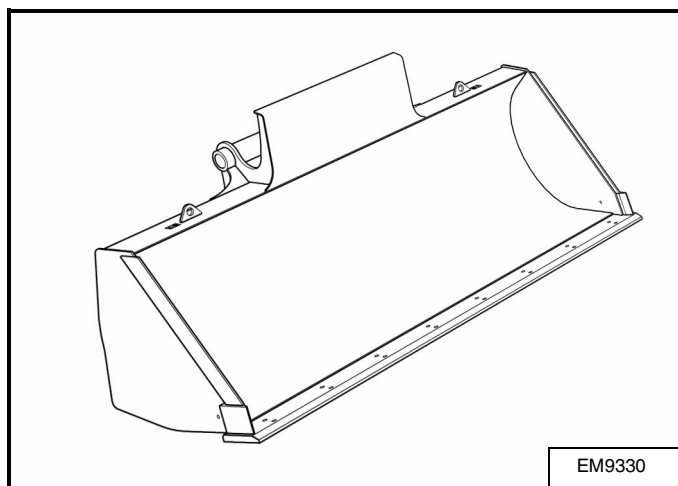
The versatile Bobcat telescopic handler quickly turns into a multi-job machine with a tight-fit attachment hook-up from bucket to grapple to pallet fork and a variety of other attachments.

See your Bobcat dealer for more details on these and other attachments and field accessories.

Increase the versatility of your Bobcat telescopic handler with a variety of bucket styles and sizes.

### Digging Buckets

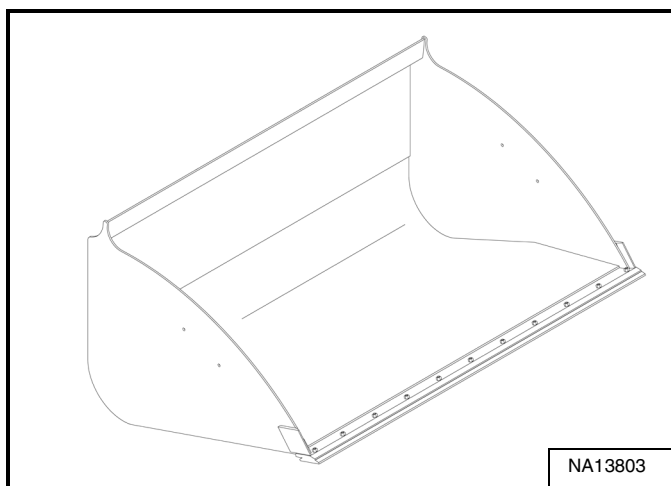
Figure 6



- 800 L (28.3 ft³) digging bucket - Quick-Tach
- 800 L (28.3 ft³) digging bucket - Mani-Tach
- 800 L (28.3 ft³) digging bucket WITH TEETH - Quick-Tach
- 800 L (28.3 ft³) digging bucket WITH TEETH - Mani-Tach

### Light Material Buckets

Figure 7

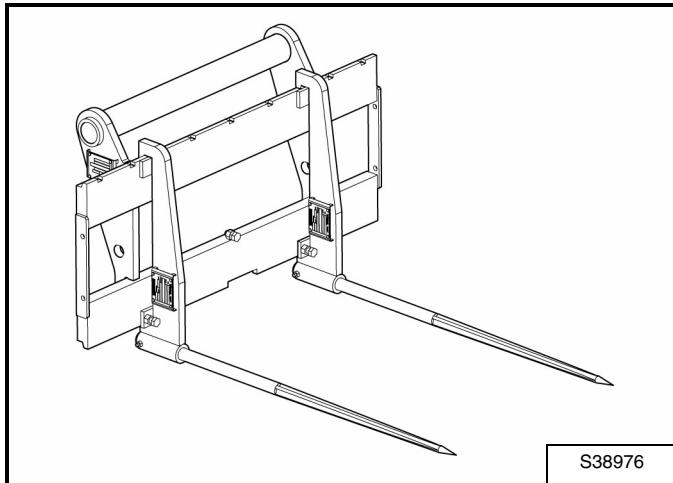


- 2000 L (70.6 ft³) without bolt-on edge - Quick-Tach
- 2000 L (70.6 ft³) with bolt-on edge - Quick-Tach
- 2500 L (88.3 ft³) without bolt-on edge - Quick-Tach
- 2500 L (88.3 ft³) with bolt-on edge - Quick-Tach
- 3000 L (105.9 ft³) without bolt-on edge - Quick-Tach
- 3000 L (105.9 ft³) with bolt-on edge - Quick-Tach

## FEATURES, ACCESSORIES AND ATTACHMENTS (CONT'D)

### Bale Spike

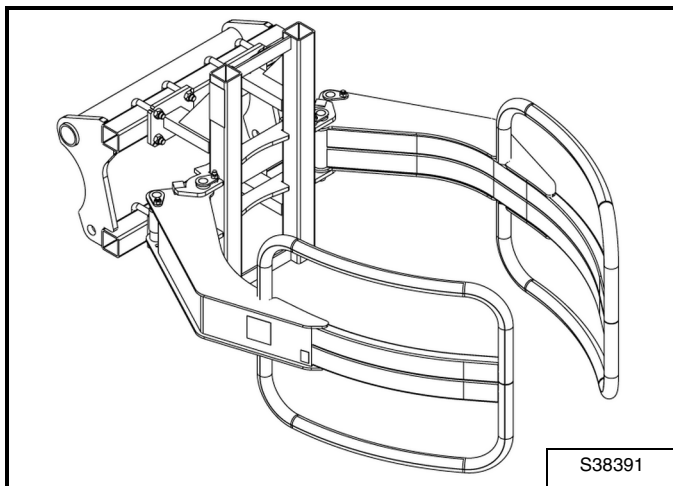
Figure 8



- Round bale spike - type III

### Bale Handlers With Tubes

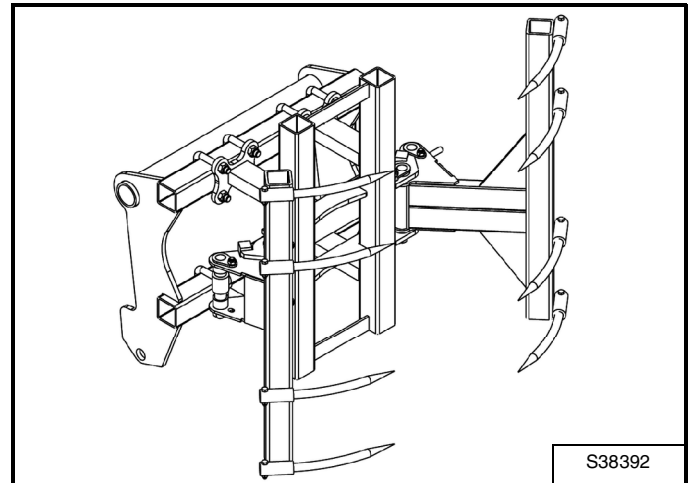
Figure 9



- Bale handler with tubes 1,3 m (4.3 ft) - Quick-Tach
- Bale handler with tubes 1,3 m (4.3 ft) - Mani-Tach
- Bale handler with tubes 1,6 m (5.2 ft) - Quick-Tach
- Bale handler with tubes 1,6 m (5.2 ft) - Mani-Tach
- Bale handler with tubes 1,8 m (5.9 ft) - Quick-Tach
- Bale handler with tubes 1,8 m (5.9 ft) - Mani-Tach

### Bale Handlers With Tines

Figure 10

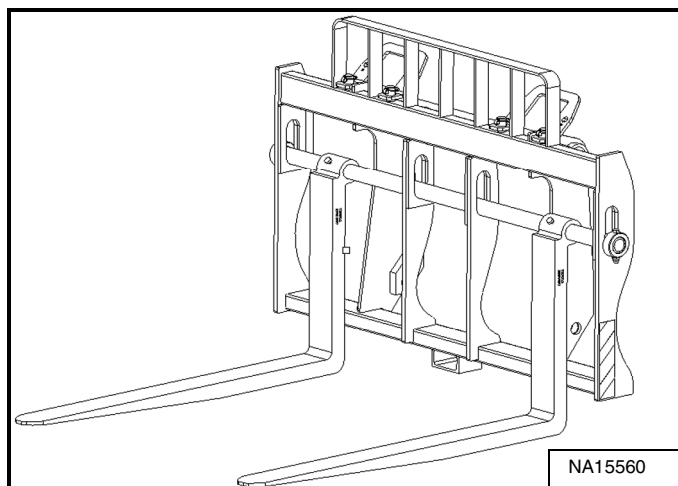


- Bale handler with tines 1,0 m (3.3 ft) - Quick-Tach
- Bale handler with tines 1,0 m (3.3 ft) - Mani-Tach
- Bale handler with tines 1,4 m (4.6 ft) - Quick-Tach
- Bale handler with tines 1,4 m (4.6 ft) - Mani-Tach

## FEATURES, ACCESSORIES AND ATTACHMENTS (CONT'D)

### Pallet Forks

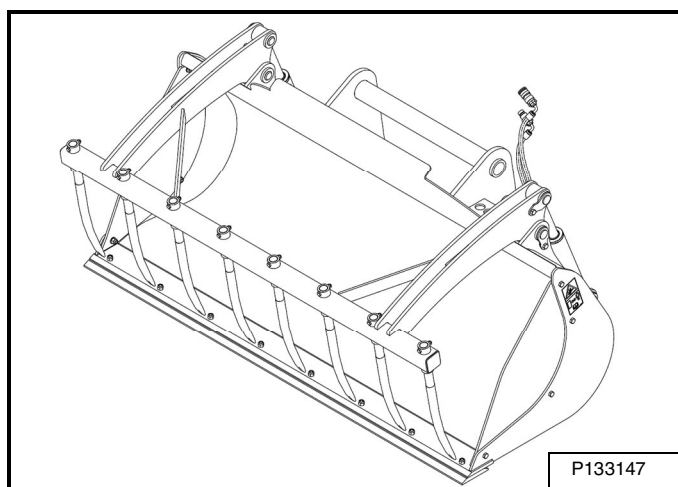
Figure 11



- Side shift carriage 200 mm (7.9 in) - Type III
- Rigid pallet forks FEM III - Quick-Tach
- Rigid pallet forks FEM III - Mani-Tach
- Floating pallet forks 1,0 m (39 in) - Quick-Tach
- Floating pallet forks 1,0 m (39 in) - Mani-Tach
- Floating pallet forks 1,5 m (59 in) - Quick-Tach
- Floating pallet forks 1,5 m (59 in) - Mani-Tach
- Floating pallet forks Q-fit - J-Tach (TL35.70(X) and TL38.70(X) only)

### Bucket Grapples

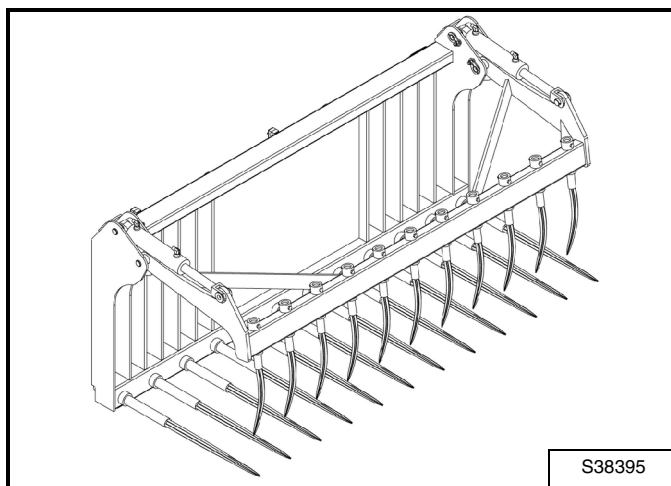
Figure 12



- Bucket Grapple, welded, 2450 mm (96.5 in) - Quick-Tach
- Bucket Grapple, forged, 2450 mm (96.5 in) - Quick-Tach

### Fork Grapples

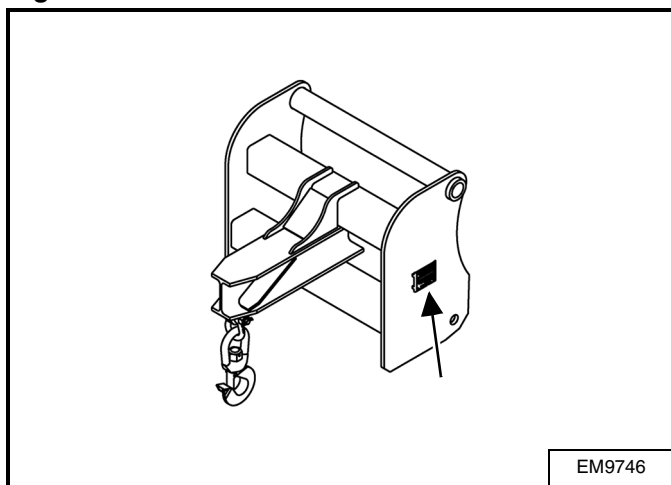
Figure 13



- Manure fork grapple 2,30 m (7.5 ft) - Quick-Tach
- Manure fork grapple 2,30 m (7.5 ft) - Mani-Tach

### Jibs

Figure 14



- Jib 0,7 m / 4300 kg (2.3 ft / 9480 lb) - Quick-Tach
- Jib 0,7 m / 4300 kg (2.3 ft / 9480 lb) - Mani-Tach