

Document Title: Operation numbers for additional work	Function Group: 070	Information Type: Service Information	Date: 31-07-2025
Profile: Asphalt Compactors			

Operation numbers for additional work

Showing Selected Profile

These operations can be used to identify work that is not included in the time guide or described in the methods in the Service Manual. When these operations are used, a description of the work that has been performed must be provided.

Other work related to engine

Op. no. 070-210

This operation can be used when work has been done related to the engine and function group 2 when no applicable method description was available. When this operation is used, additional information is required:

- Description of work that has been done

Other work related to electrical system

Op. no. 070-310

This operation can be used when work has been done related to the electrical system and function group 3 when no applicable method description was available. When this operation is used, additional information is required:

- Description of work that has been done

Other work related to transmission, gearbox, travel motor, swing motor

Op. no. 070-410

This operation can be used when work has been done related to the transmission, gearbox, travel motor or swing motor and function group 4 when no applicable method description was available. When this operation is used, additional information is required:

- Description of work that has been done

Other work related to drive axle

Op. no. 070-470

This operation can be used when work has been done related to the drive axle and function group 46 when no applicable method description was available. When this operation is used, additional information is required:

- Description of required work that have been done

Other work related to brake system

Op. no. 070-510

This operation can be used when work has been done related to the brake system and function group 5 when no applicable

method description was available. When this operation is used, additional information is required:

- Description of work that has been done

Other work related to steering system

Op. no. 070-610

This operation can be used when work has been done related to the steering system and function group 6 when no applicable method description was available. When this operation is used, additional information is required:

- Description of work that has been done

Other work related to frame link, axle suspension

Op. no. 070-710

This operation can be used when work has been done related to the frame link, axle suspension and other parts related to function group 7 when no applicable method description was available. When this operation is used, additional information is required:

- Description of work that has been done

Other work related to cab, air conditioning

Op. no. 070-810

This operation can be used when work has been done related to the cab, air conditioning and other parts related to function group 8 when no applicable method description was available. When this operation is used, additional information is required:

- Description of work that has been done

Other work related to hydraulic system

Op. no. 070-910

This operation can be used when work has been done related to the hydraulic system and other parts related to function group 9 when no applicable method description was available. When this operation is used, additional information is required:

- Description of work that has been done

Document Title: Fuel system, bleeding	Function Group: 233	Information Type: Service Information	Date: 31-07-2025
Profile: CR30B Volvo			

[Go back to Index Page](#)

Fuel system, bleeding

Showing Selected Profile

Valid for serial numbers			
Model	Production site	Serial number start	Serial number stop
CR30B Volvo			

Op nbr 233-001

Total procedure time (hr): 0.10

1. Turn the ignition switch to the ON position.
2. Wait 30 seconds and allow the electric fuel pump to prime the system.
3. Turn the ignition switch to the START position.

NOTE!

Do not crank the engine for longer than 30 seconds. If the engine does not start, repeat procedure by cycling the ignition switch.

4. Operate the machine as needed or shut down the engine.

Document Title: Fuel system, bleeding	Function Group: 233	Information Type: Service Information	Date: 31-07-2025
Profile: CR30B Volvo			

[Go back to Index Page](#)

Fuel system, bleeding

Showing Selected Profile

Valid for serial numbers			
Model	Production site	Serial number start	Serial number stop
CR30B Volvo			

Op nbr 233-001

Total procedure time (hr): 0.10

1. Turn the ignition switch to the ON position.
2. Hand pump the priming pump tube on the feed pump and the pump on the fuel water separator to prime the system.

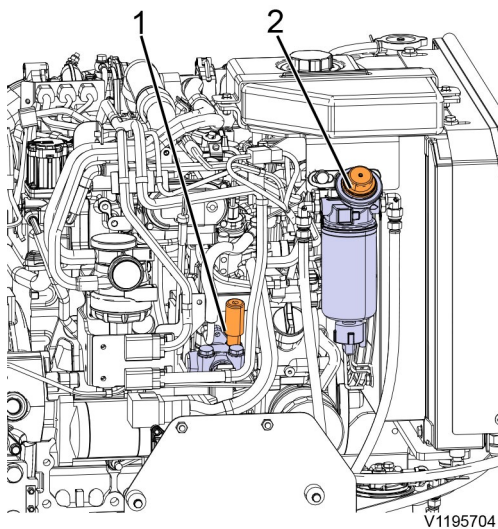


Figure 1
Engine assembly

1. Priming pump tube
 2. Fuel water separator pump
3. Turn the ignition switch to the START position.
NOTE!
Do not crank the engine for longer than 30 seconds. If the engine does not start repeat the procedure.
 4. Operate the machine as needed or shut down the engine.

Document Title: Tech Tool, operations	Function Group: 300	Information Type: Service Information	Date: 31-07-2025
Profile: CR30B Volvo			

Tech Tool, operations

Showing Selected Profile

Valid for serial numbers			
Model	Production site	Serial number start	Serial number stop
CR30B Volvo			

The following Tech Tool operations are available for function group 3. Operations used when changing or working on components are mandatory.



V1126978

Figure 1
Tech tool

NOTE!

New operations are developed regularly. For a current list of all tests, see Tech Tool.

Operation Number	Operation	Application
38335-3	Displayed machine hours, correction	Used to correct machine hours.
39796-3	Telematics control unit, reset	Resets the control unit to the factory settings.
39797-3	Telematics system status, check	Checks the current connection status.

Document Title: Propulsion control lever, replacing	Function Group: 424	Information Type: Service Information	Date: 31-07-2025
Profile: CR30B Volvo			

Propulsion control lever, replacing

Showing Selected Profile

Valid for serial numbers			
Model	Production site	Serial number start	Serial number stop
CR30B Volvo			

Op nbr 424-004

Total procedure time (hr): 0.70

This operation also includes required tools and times for applicable parts of the following operations:

- [Service position](#)
1. Place machine in the service position. Refer to [Service position](#).
 2. Remove the nut securing the cable clamp.

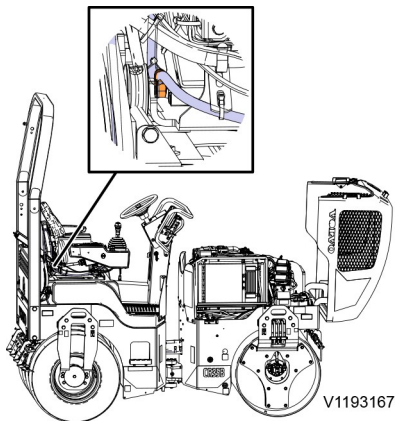


Figure 1
Cable clamp

3. Lift the rubber boot up to access the mounting bolts.

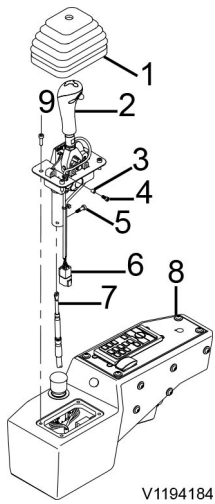


Figure 2
Side console assembly

1. Rubber boot
2. Propulsion control lever
3. Bushing
4. Hex socket bolt
5. Shoulder bolt
6. Electrical connector
7. Cable end rod
8. Side console
9. Four (4) bolts

4. Remove the four (4) bolts securing the propulsion control lever to the side console.

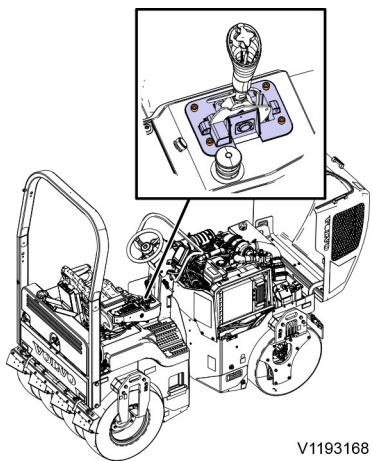


Figure 3
Propulsion control lever bolts

5. Slightly raise the propulsion control lever out of the side console.
6. Remove the hex socket bolt and bushing securing the cable end rod eyelet.
7. Disconnect the propulsion control lever electrical connector.
8. Remove the shoulder bolt securing the propulsion control cable barrel to the propulsion control lever assembly.
9. Remove the propulsion control lever from the side console.
10. Install the propulsion control cable to the propulsion control lever.

11. Install the shoulder bolt to secure the propulsion control cable barrel by its groove to the propulsion control lever assembly.
12. Install the hex socket bolt and bushing to secure the cable end rod eyelet.
13. Connect the propulsion control lever electrical connector.
14. Place the propulsion control lever in to the side console.
15. Install the four (4) bolts to secure the propulsion control lever to the side console.
16. Install the rubber boot on to the propulsion control lever.
17. Install the nut to secure the cable clamp.
18. Start the engine and operate machine functions.
NOTE!
Ensure that the back-up alarm sounds before the machine moves in reverse.
19. Shut down the engine.
20. Adjust the propulsion cable as needed.

Document Title: Steering cylinder, removing	Function Group: 645	Information Type: Service Information	Date: 31-07-2025
Profile: CR30B Volvo			

Steering cylinder, removing

Showing Selected Profile

Valid for serial numbers			
Model	Production site	Serial number start	Serial number stop
CR30B Volvo			

Op nbr 645-004**Total procedure time (hr): 0.40****This operation also includes required tools and times for applicable parts of the following operations:**

- [Service position](#)
 1. Place machine in the service position. Refer to [Service position](#).
 2. Articulate the machine so that the left side is fully exposed.

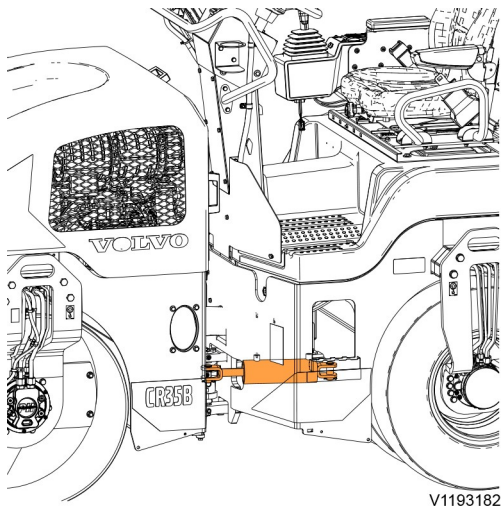


Figure 1
Steering cylinder

3. Remove the cotter pin from the clevis pin securing the steering cylinder to the front frame.

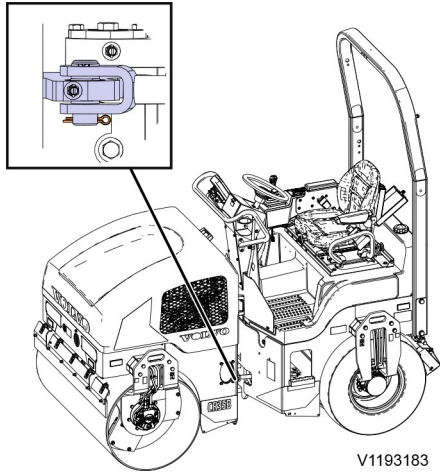


Figure 2

Steering cylinder cotter pin (configuration is the same for the rear of the cylinder)

4. Remove the clevis pin securing the steering cylinder to the front frame.
5. Turn the steering wheel counter-clockwise to fully retract the steering cylinder.
6. Clean and label the steering cylinder hydraulic hoses.
7. Disconnect the hoses from the steering cylinder. Seal all open hose ends and ports.
8. Remove the cotter pin from the clevis pin securing the steering cylinder to the rear frame.
9. Remove the clevis pin securing the steering cylinder to the rear frame.
10. Remove the steering cylinder from the machine.
11. Remove the hose fittings from the steering cylinder.