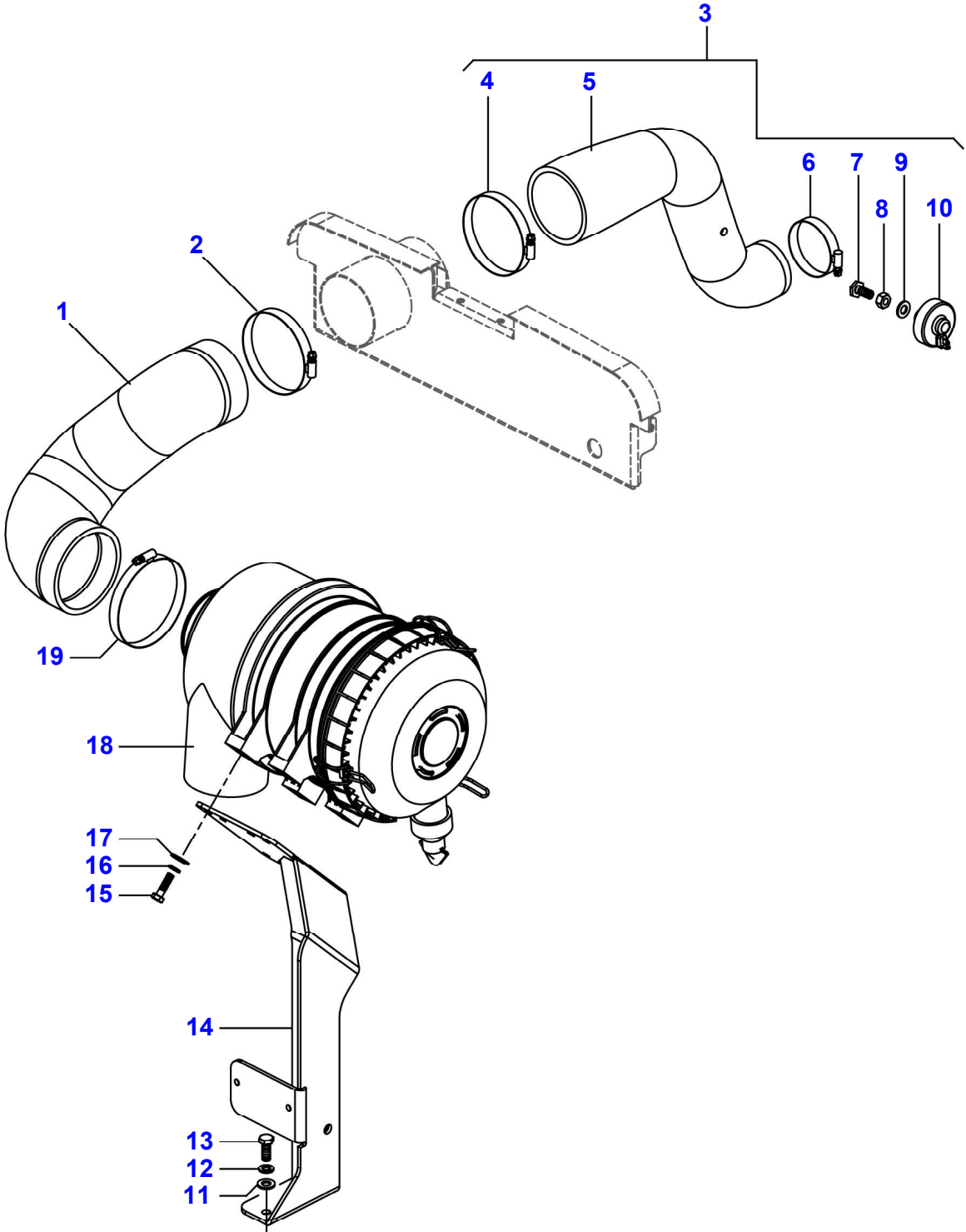
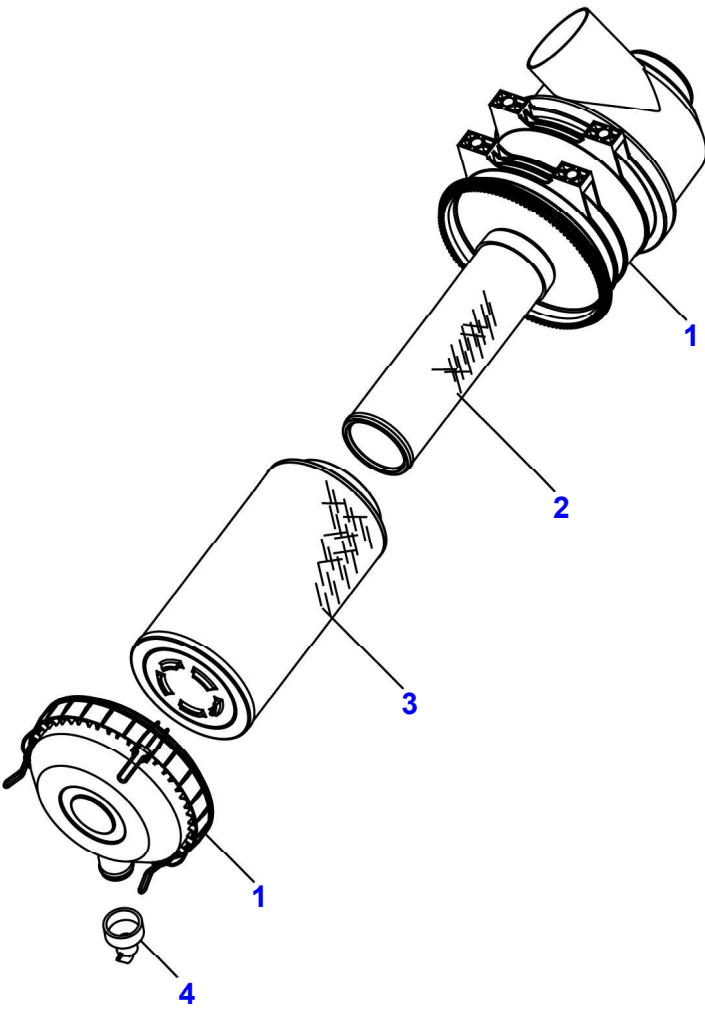


<b>Page Number</b>	<b>Page Title</b>	<b>Page Reference</b>
01-000-TOC	ENGINE, FUEL AND EXHAUST SYSTEM	01-000-TOC
02-000-TOC	AXLES	02-000-TOC
03-000-TOC	DRIVE TRAIN SYSTEM	03-000-TOC
04-000-TOC	HYDRAULIC SYSTEM	04-000-TOC
05-000-TOC	ELECTRICAL SYSTEM	05-000-TOC
06-000-TOC	CAB	06-000-TOC
07-000-TOC	PLATFORM	07-000-TOC
08-000-TOC	CHASSIS	08-000-TOC
09-000-TOC	WHEELS	09-000-TOC
10-000-TOC	IMPLEMENT DRIVE SYSTEM	10-000-TOC
11-000-TOC	LINKAGE	11-000-TOC
12-000-TOC	ACCESSORIES	12-000-TOC

MF 4283 TRACTOR  
T0245079



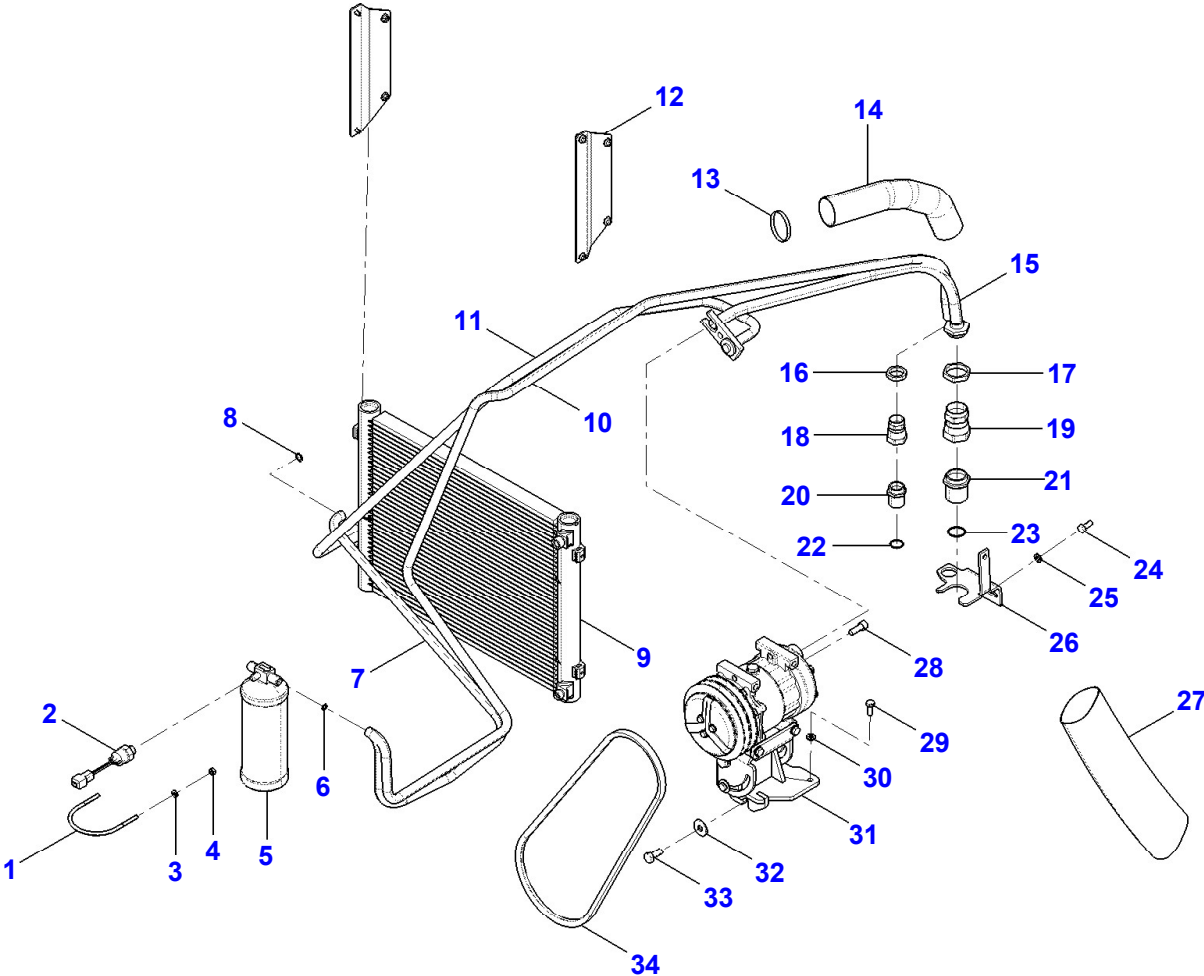
Item	Part Number	Qty	Description Comments	Technical Specification
1	6274387M1	1	AIR FILTER HOSE	
2	2800261M1	1	CLAMP	
3	6275670M91	1	HOSE	
4	2800261M1	1	CLAMP	
5	6275669M1	1	HOSE	
6	2801096M1	1	CLAMP	
7	050386P1	1	CONNECTION	
8	390332X1	1	HEX NUT	M10 (1.0) ISO 8 ZN
9	390734X1	1	FLAT WASHER	Ø 10-21 X 2 MM
10	3808461M1	1	PRESSURE SENSOR	
11	390734X1	2	FLAT WASHER	Ø 10-21 X 2 MM
12	339376X1	2	LOCKWASHER	M10 ZN
13	339401X1	2	HEXAGONAL HEAD BOLT	M10 X 25 (1.5) ISO 8.8 ZN
14	6274385M91	1	AIR FILTER BRACKET	
15	339337X1	4	HEXAGONAL HEAD BOLT	M8 X 30 (1.25) ISO 8.8 ZN
16	339374X1	4	LOCKWASHER	M8 ZN
17	391039X1	4	FLAT WASHER	M8 ZN
18	6274389M91	1	AIR FILTER SEE PAGE 01-0152	
19	3468400M1	1	CLAMP	



MWM

Item	Part Number	Qty	Description Comments	Technical Specification
1		1	COVER	
2	6223619M1	1	AIR FITR.ELEMENT [A]	INNER/SAFETY
3	6223618M1	1	AIR FITR.ELEMENT [B]	OUTER/MAIN
4	6223613M1	1	VALVE [A] INNER [B] OUTER	

MF 4283 TRACTOR  
22900040-J-1



Item	Part Number	Qty	Description Comments	Technical Specification
1	3383977M1	1	STIRRUP	
2	6308050M1	1	PRESSURE SENSOR	
3	390971X1	2	FLAT WASHER	M6 ZN
4	339030X1	2	HEX NUT	M6 (1.0) ISO 8 ZN
5	3712495M1	1	AIR CONDITIONING RECEIVER DRIER	OIL DRYER
6	3010471X1	3	O RING	Ø 7,65 X 1,78 MM
7	6262296M1	1	HOSE	
8	3010472X1	1	O RING	Ø 10,82 X 1,78 MM
9	ACW0790490	1	CONDENSER	
10	068333T1	1	HOSE	D8.2X2015
11	3714484M1	1	HYDR. HOSE	
12	NS	1	NON-SERVICEABLE PART SEE PAGE 01-0177	
13	517587M1	5	CABLE TIE	L = 171/187 MM
14	072867P1	1	HOSE	
15	068334T1	1	HOSE	D16.1X669
16	1691972M1	1	NUT	
17	1691973M1	1	NUT	
18	368524X1	1	UNION	
19	368543X1	1	UNION	
20	368523X1	1	UNION	
21	368544X1	1	UNION	
22	3010502X1	1	O RING	19.90 X 1.55-DIDC 70-HNBR
23	3010474X1	1	O RING	26.70X1.78-DIDC 70-HNBR
24	339123X1	2	HEXAGONAL HEAD BOLT	M8 X 20 (1.25) ISO 8.8 ZN
25	339374X1	2	LOCKWASHER	M8 ZN
26	6265446M1	1	BRACKET	
27	040368P1	1	HOSE PROTECTOR	
28	358139X1	1	SCREW	3/8"-24 X 1 ISO 12.9 ZN
29	339123X1	2	HEXAGONAL HEAD BOLT	M8 X 20 (1.25) ISO 8.8 ZN
30	339374X1	2	LOCKWASHER	M8 ZN
31	NS	1	NON-SERVICEABLE PART SEE PAGE 01-0178	
	339084X1	1	HEXAGONAL HEAD BOLT FROM SERIAL OR ENGINE NUMBER 9AGT0004PJC023983	M8 X 100 (1.25) ISO 8.8 ZN
	3019124X1	1	HEX FLANGE NUT FROM SERIAL OR ENGINE NUMBER 9AGT0004PJC023983	M8 (1.25) ISO 10 ZN
32	390597X1	1	FLAT WASHER	M10 ZN
33	3009492X1	1	HEXAGONAL HEAD BOLT	M10 X 25 (1.5) ISO 8.8 ZN
34	6201102M1	1	BELT	